

COUNTY SURVEYORS FILE DATA
DO NOT REMOVE FROM OFFICE

FILES BS
REPLY BS
COUNTY SURVEYORS
EUGENE OREGON

CENTER 1/4 CORNER
FD. 1 1/2" x 36" IRON PIPE AND BRASS CAP
SET IN SURVEY M90-28
19" ALDER, N10°W, 32.0' (SCRIBE VIS.), 1982 B.T.
37" FIR, S58°E, 37.4' (SCRIBE VIS.), 1982 B.T.

"A" WITNESS CORNER ON WEST LINE
SET 2" x 30" ALUMINUM PIPE AND CAP
6" MAPLE, N83°W, 11.3' (SCRIBED/PAINTED)
16" ALDER, S17°E, 24.5' (SCRIBED/PAINTED)

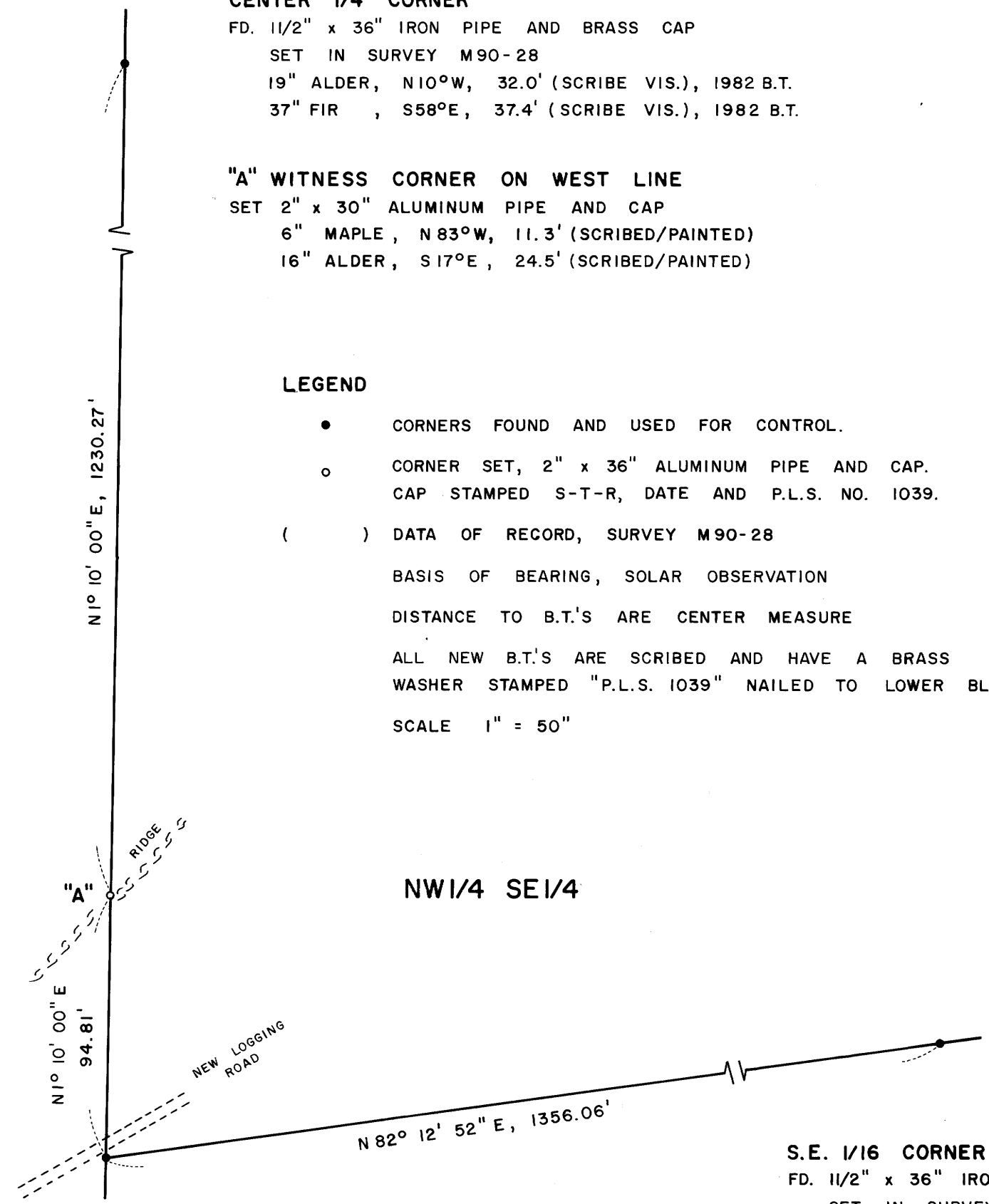
LEGEND

- CORNERS FOUND AND USED FOR CONTROL.
- CORNER SET, 2" x 36" ALUMINUM PIPE AND CAP. CAP STAMPED S-T-R, DATE AND P.L.S. NO. 1039.
- () DATA OF RECORD, SURVEY M90-28

BASIS OF BEARING, SOLAR OBSERVATION
DISTANCE TO B.T.'S ARE CENTER MEASURE
ALL NEW B.T.'S ARE SCRIBED AND HAVE A BRASS WASHER STAMPED "P.L.S. 1039" NAILED TO LOWER BLAZE
SCALE 1" = 50"

SURVEY IN
NW1/4 SE1/4 SEC. 30, T20S, R9W
DOUGLAS COUNTY, OREGON
FOR
INTERNATIONAL PAPER COMPANY
BY
ROBERTS SURVEYING INC.
29 WEST 29TH STREET
EUGENE, OREGON 97405
MARCH 29, 1984

C.S. FILE 58/293(N)
Map File M 96-31



NARRATIVE
THE PURPOSE OF THIS SURVEY IS TO REFERENCE THE C.S. 1/16 CORNER OF SECTION 30. A NEW LOGGING ROAD IS BEING CONSTRUCTED IN THE AREA AS SHOWN AND THE EXISTING C.S. 1/16 CORNER WILL BE DESTROYED. I REFERENCED SAID CORNER BY SETTING ONE WITNESS CORNER. WITNESS CORNER "A" WAS SET N1° 10' 00" E, 94.81' FROM FOUND C.S. 1/16 CORNER.

C.S. 1/16 CORNER
FD. 1 1/2" x 36" IRON PIPE AND BRASS CAP
SET IN SURVEY M90-28
14" MAPLE, S48°W, 21.8' (SCRIBE VIS.), 1982 B.T.
20" FIR, S82°E, 29.1' (SCRIBE VIS.), 1982 B.T.

S.E. 1/16 CORNER
FD. 1 1/2" x 36" IRON PIPE AND BRASS CAP
SET IN SURVEY M90-28
19" MAPLE, SOUTH, 64.1' (SCRIBE VIS.), 1982 B.T.
24" MAPLE, S76°E, 39.6' (SCRIBE VIS.), 1982 B.T.

Lea Roberts

MAP FILE M 96-31
C.S. FILE 58/293(N)