

COUNTY SURVEYORS FILE DATA
DO NOT REMOVE FROM OFFICE

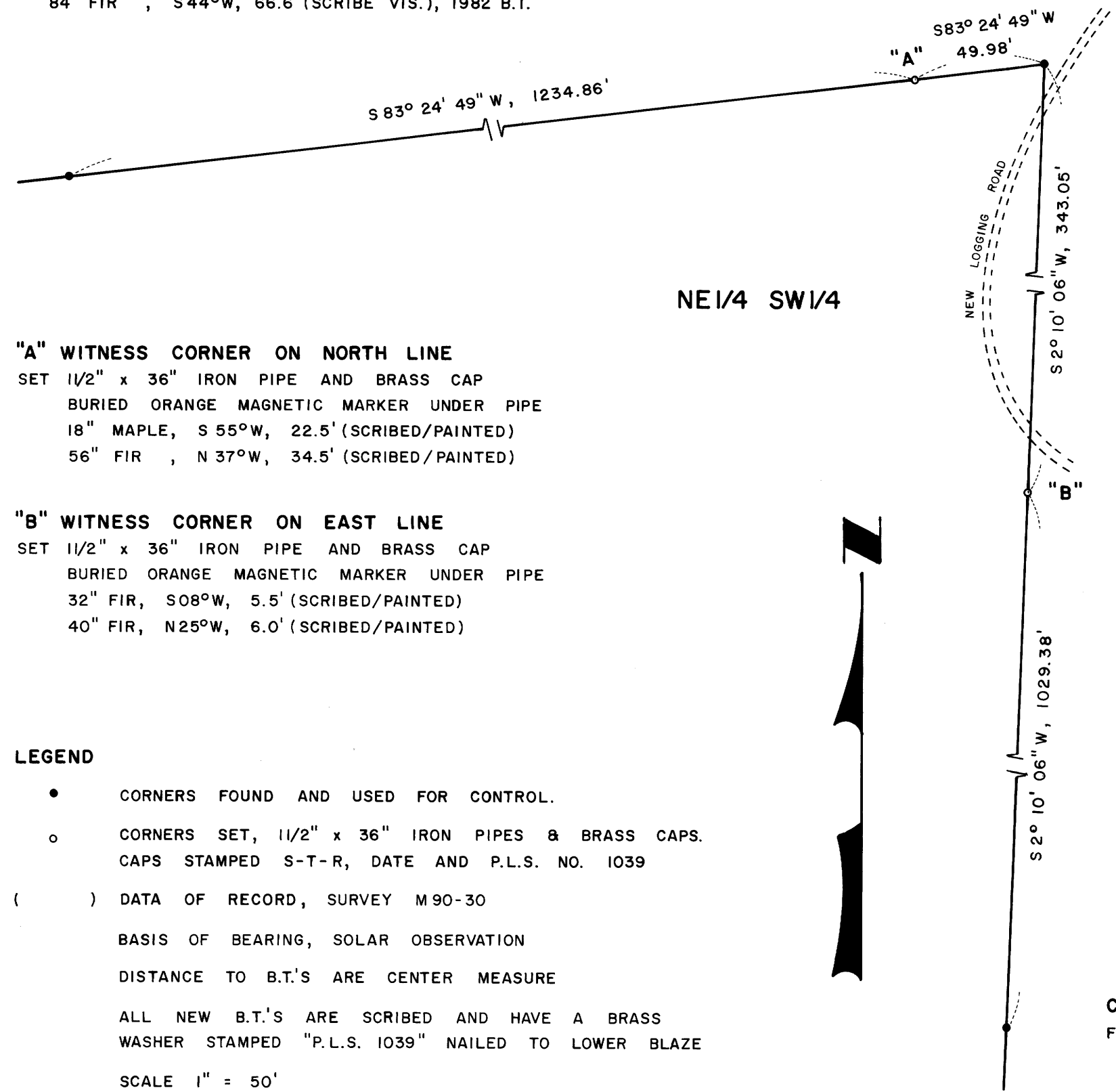
FILED BS
RECORDED BS
COUNTY CLERK
DOUGLAS COUNTY, OREGON
M 96-30

C.W. 1/16 CORNER

FD. 1 1/2" x 36" IRON PIPE AND BRASS CAP
SET IN SURVEY M90-30
20" CEDAR, N86°W, 43.7' (SCRIBE VIS.), 1982 B.T.
84" FIR, S44°W, 66.6' (SCRIBE VIS.), 1982 B.T.

CENTER 1/4 CORNER

FD. 1 1/2" x 36" IRON PIPE AND BRASS CAP
SET IN SURVEY M90-30
14" HEMLOCK, S85°E, 30.3' (SCRIBE VIS.), 1982 B.T.
29" ALDER, N13°E, 10.2' (SCRIBE VIS.), 1982 B.T.



"A" WITNESS CORNER ON NORTH LINE

SET 1 1/2" x 36" IRON PIPE AND BRASS CAP
BURIED ORANGE MAGNETIC MARKER UNDER PIPE
18" MAPLE, S 55°W, 22.5' (SCRIBED/PAINTED)
56" FIR, N 37°W, 34.5' (SCRIBED/PAINTED)

"B" WITNESS CORNER ON EAST LINE

SET 1 1/2" x 36" IRON PIPE AND BRASS CAP
BURIED ORANGE MAGNETIC MARKER UNDER PIPE
32" FIR, S08°W, 5.5' (SCRIBED/PAINTED)
40" FIR, N25°W, 6.0' (SCRIBED/PAINTED)

LEGEND

- CORNERS FOUND AND USED FOR CONTROL.
 - o CORNERS SET, 1 1/2" x 36" IRON PIPES & BRASS CAPS. CAPS STAMPED S-T-R, DATE AND P.L.S. NO. 1039
 - () DATA OF RECORD, SURVEY M90-30
- BASIS OF BEARING, SOLAR OBSERVATION
 DISTANCE TO B.T.'S ARE CENTER MEASURE
 ALL NEW B.T.'S ARE SCRIBED AND HAVE A BRASS WASHER STAMPED "P.L.S. 1039" NAILED TO LOWER BLAZE
 SCALE 1" = 50'

SURVEY IN
 NE 1/4 SW 1/4 SEC. 5, T21S, R9W
 DOUGLAS COUNTY, OREGON
 FOR
 INTERNATIONAL PAPER COMPANY
 BY
 ROBERTS SURVEYING INC.
 29 WEST 29TH STREET
 EUGENE, OREGON 97405
 MARCH 27, 1984

NARRATIVE

THE PURPOSE OF THIS SURVEY IS TO REFERENCE THE CENTER 1/4 CORNER OF SECTION 5. A NEW LOGGING ROAD IS BEING CONSTRUCTED IN THE AREA AS SHOWN AND THE EXISTING CENTER 1/4 CORNER WILL BE DESTROYED. I REFERENCED SAID CORNER BY SETTING 2 WITNESS CORNERS. WITNESS CORNER "A" WAS SET S83° 24' 49" W, 49.98' FROM FOUND CENTER 1/4 CORNER. WITNESS CORNER "B" WAS SET S 2° 10' 06" W, 343.05' FROM FOUND CENTER 1/4 CORNER.

C.S. 1/16 CORNER

FD. 1 1/2" x 36" IRON PIPE AND BRASS CAP
SET IN SURVEY M90-30
9" FIR, N01°W, 51.4' (SCRIBE VIS.), 1982 B.T.
41" FIR, S69°W, 11.2' (SCRIBE VIS.), 1982 B.T.

ROBERTS SURVEYING INC.
 Les Roberts
 EUGENE, OREGON

C.S. 58/223 (M)
M 96-30

C.S. 58/223 (M)
M 96-30