

N.W. CORNER SECTION 35

FD. 1953 G.L.O. BRASS CAP & 1967 FENCE POST
 18" FIR, S11°W, 57.4' (SCAR VIS.), 1953 B.T.
 25" FIR, N45°W, 50.2' (SCAR VIS.), 1953 B.T.
 25" FIR, S84°E, 25.2' (SCAR VIS.), 1953 B.T.
 30" FIR, N83°E, 27.6' (SCAR VIS.), 1953 B.T.

WEST 1/4 CORNER SECTION 35

FD. 1953 G.L.O. BRASS CAP
 11" FIR, S18°E, 15.6' (SCAR VIS.), 1953 B.T.
 14" FIR, N41°W, 2.0' (SCAR VIS.), 1953 B.T.

NORTH 1/4 CORNER SECTION 35

FD. 1953 G.L.O. BRASS CAP & 1967 FENCE POST
 24" FIR, S36°W, 8.0' (SCAR VIS.), 1953 B.T.
 38" FIR, N45°E, 6.1' (SCAR VIS.), 1953 B.T.

N.E. CORNER SECTION 35

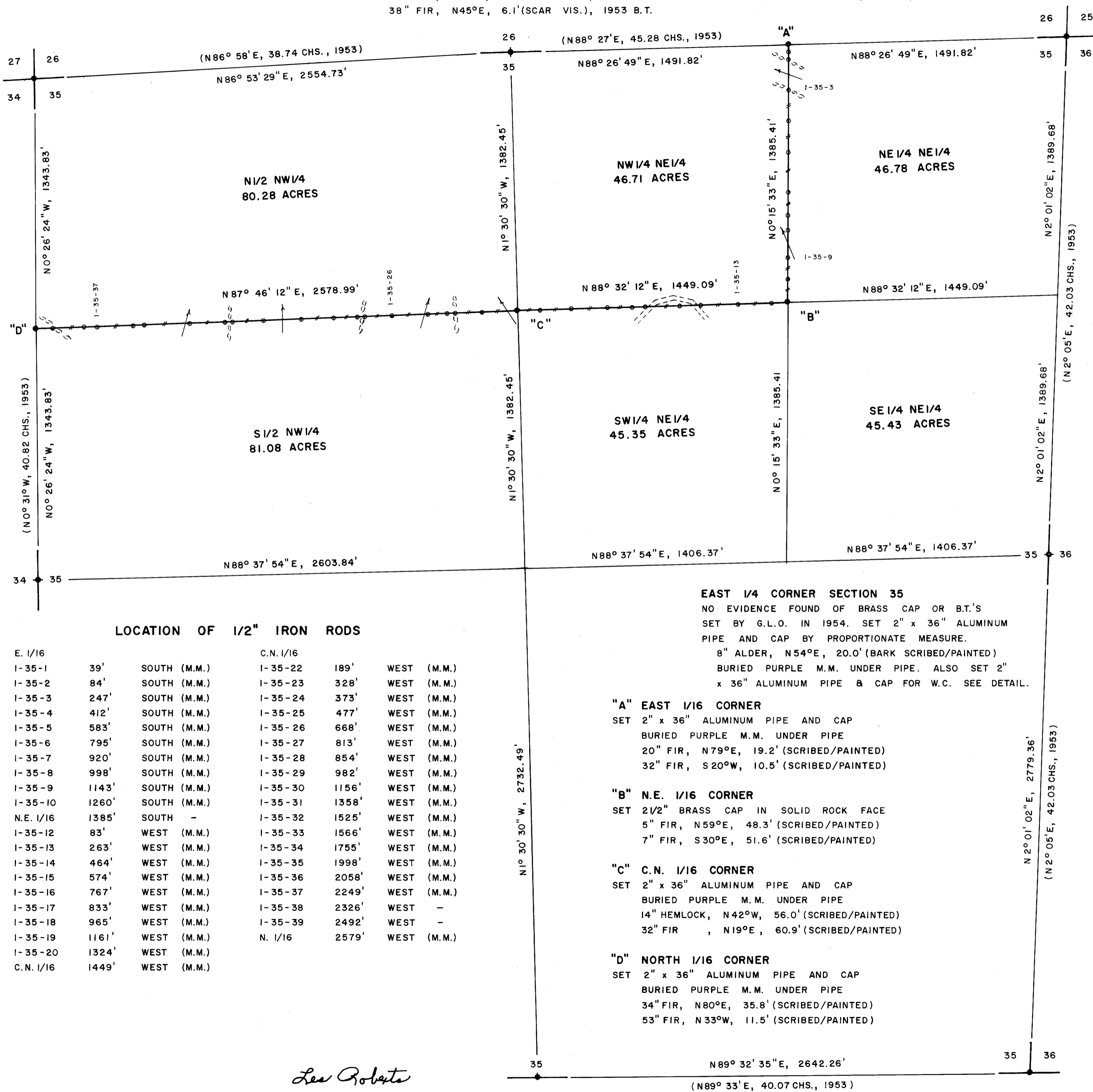
FD. 1954 G.L.O. BRASS CAP
 31" FIR STUMP, N78°W, 16.0' (NO MARKS), 1891 B.T.
 35" FIR STUMP, S70°E, 11.8' (NO MARKS), 1891 B.T.
 15" FIR STUMP, N65°W, 45.4' (SCRIBE VIS.), 1954 B.T.
 19" FIR STUMP, S33°W, 38.8' (SCRIBE VIS.), 1954 B.T.
 20" FIR STUMP, N62°E, 11.6' (SCRIBE VIS.), 1954 B.T.
 28" FIR STUMP, S51°E, 42.7' (SCRIBE VIS.), 1954 B.T.

COUNTY SURVEYORS FILE DATA
 DO NOT REMOVE FROM OFFICE

FILED *BS*
 RECEIVED *BS*
 MARCH 14 1984
 COUNTY SURVEYOR
 EUGENE, OREGON

C.S. FILE 58/280(N)
 MAP FILE M 96-26

SURVEY OF
 SECTION 35, T20S, R9W, W.M.
 DOUGLAS COUNTY, OREGON
 FOR
 INTERNATIONAL PAPER COMPANY
 BY
 ROBERTS SURVEYING INC.
 29 WEST 29TH STREET
 EUGENE, OREGON 97405
 MARCH 2, 1984



LOCATION OF 1/2" IRON RODS

E. 1/16			C.N. 1/16		
1-35-1	39'	SOUTH (M.M.)	1-35-22	189'	WEST (M.M.)
1-35-2	84'	SOUTH (M.M.)	1-35-23	328'	WEST (M.M.)
1-35-3	247'	SOUTH (M.M.)	1-35-24	373'	WEST (M.M.)
1-35-4	412'	SOUTH (M.M.)	1-35-25	477'	WEST (M.M.)
1-35-5	583'	SOUTH (M.M.)	1-35-26	668'	WEST (M.M.)
1-35-6	795'	SOUTH (M.M.)	1-35-27	813'	WEST (M.M.)
1-35-7	920'	SOUTH (M.M.)	1-35-28	854'	WEST (M.M.)
1-35-8	998'	SOUTH (M.M.)	1-35-29	982'	WEST (M.M.)
1-35-9	1143'	SOUTH (M.M.)	1-35-30	1156'	WEST (M.M.)
1-35-10	1260'	SOUTH (M.M.)	1-35-31	1358'	WEST (M.M.)
N.E. 1/16	1385'	SOUTH -	1-35-32	1525'	WEST (M.M.)
1-35-12	83'	WEST (M.M.)	1-35-33	1566'	WEST (M.M.)
1-35-13	263'	WEST (M.M.)	1-35-34	1755'	WEST (M.M.)
1-35-14	464'	WEST (M.M.)	1-35-35	1998'	WEST (M.M.)
1-35-15	574'	WEST (M.M.)	1-35-36	2058'	WEST (M.M.)
1-35-16	767'	WEST (M.M.)	1-35-37	2249'	WEST (M.M.)
1-35-17	833'	WEST (M.M.)	1-35-38	2326'	WEST -
1-35-18	965'	WEST (M.M.)	1-35-39	2492'	WEST -
1-35-19	1161'	WEST (M.M.)	N. 1/16	2579'	WEST (M.M.)
1-35-20	1324'	WEST (M.M.)			
C.N. 1/16	1449'	WEST (M.M.)			

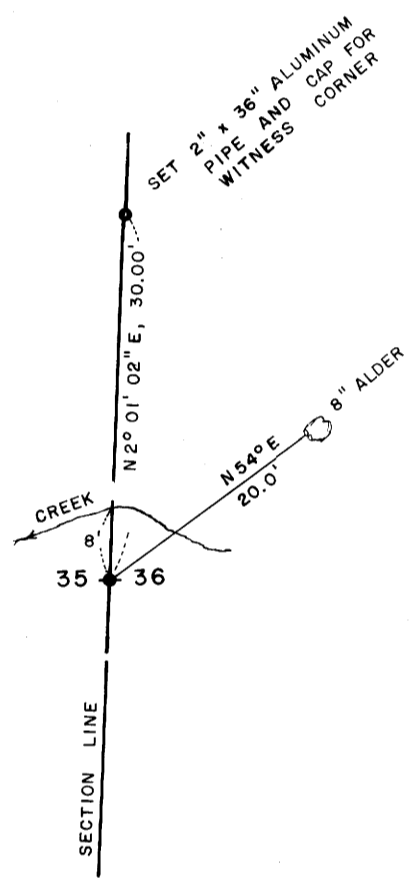
EAST 1/4 CORNER SECTION 35
 NO EVIDENCE FOUND OF BRASS CAP OR B.T.'S
 SET BY G.L.O. IN 1954. SET 2" x 36" ALUMINUM
 PIPE AND CAP BY PROPORTIONATE MEASURE.
 8" ALDER, N54°E, 20.0' (BARK SCRIBED/PAINTED)
 BURIED PURPLE M.M. UNDER PIPE. ALSO SET 2"
 x 36" ALUMINUM PIPE & CAP FOR W.C. SEE DETAIL.

"A" EAST 1/16 CORNER
 SET 2" x 36" ALUMINUM PIPE AND CAP
 BURIED PURPLE M.M. UNDER PIPE
 20" FIR, N79°E, 19.2' (SCRIBED/PAINTED)
 32" FIR, S20°W, 10.5' (SCRIBED/PAINTED)

"B" N.E. 1/16 CORNER
 SET 2 1/2" BRASS CAP IN SOLID ROCK FACE
 5" FIR, N59°E, 48.3' (SCRIBED/PAINTED)
 7" FIR, S30°E, 51.6' (SCRIBED/PAINTED)

"C" C.N. 1/16 CORNER
 SET 2" x 36" ALUMINUM PIPE AND CAP
 BURIED PURPLE M.M. UNDER PIPE
 14" HEMLOCK, N42°W, 56.0' (SCRIBED/PAINTED)
 32" FIR, N19°E, 60.9' (SCRIBED/PAINTED)

"D" NORTH 1/16 CORNER
 SET 2" x 36" ALUMINUM PIPE AND CAP
 BURIED PURPLE M.M. UNDER PIPE
 34" FIR, N80°E, 35.8' (SCRIBED/PAINTED)
 53" FIR, N33°W, 11.5' (SCRIBED/PAINTED)



- LEGEND**
- CORNERS FOUND AND USED FOR CONTROL
 - CORNERS SET, 2" ALUMINUM PIPES WITH ALUMINUM CAPS. CAPS STAMPED S-T-R, DATE & P.L.S. NO. 1039
 - o— LINES BLAZED AND POSTED THIS SURVEY
 - () DATA OF RECORD, 1891 AND 1953 G.L.O. SURVEYS
 - o— BASIS OF BEARING, SOLAR OBSERVATION
 - o— DISTANCE TO B.T.'S ARE CENTER MEASURE
 - ALL NEW B.T.'S ARE SCRIBED AND HAVE A BRASS WASHER STAMPED "P.L.S. 1039" NAILED TO LOWER BLAZE
 - (M.M.) INDICATES LOCATION OF BURIED MAGNETIC MARKERS. MARKERS ARE ORANGE IN COLOR AND ARE BURIED 12" TO 18" DEEP BESIDE EACH IRON ROD.
 - SCALE 1" = 400'

NARRATIVE
 I, LES ROBERTS, REGISTERED PROFESSIONAL LAND SURVEYOR DO CERTIFY THAT I HAVE CORRECTLY SURVEYED SECTION 35 IN ACCORDANCE TO THE 1973 MANUAL OF INSTRUCTIONS FOR THE SURVEY OF THE PUBLIC LANDS OF THE UNITED STATES. THE EAST 1/4 CORNER OF SECTION 35 COULD NOT BE FOUND IN THE FIELD AND WAS RE-SET BY SINGLE PROPORTIONATE MEASURE BETWEEN THE FOUND N.E. AND S.E. SECTION CORNERS AS SHOWN. THE POSITION FOR THE CENTER 1/4 CORNER WAS DETERMINED BY INTERSECTING THE N-S AND E-W CENTERLINES OF SECTION 35. THE EAST 1/16 CORNER BETWEEN SECTIONS 26 AND 35 WAS SET HALFWAY BETWEEN THE NORTH 1/4 CORNER AND THE N.E. SECTION CORNER AS SHOWN. THE NORTH 1/16 CORNER BETWEEN SECTIONS 34 AND 35 WAS SET HALFWAY BETWEEN THE WEST 1/4 CORNER AND THE N.W. SECTION CORNER AS SHOWN. THE C.N. 1/16 CORNER WAS SET HALFWAY BETWEEN THE CENTER 1/4 CORNER AND THE NORTH 1/4 CORNER AS SHOWN. THE N.E. 1/16 CORNER WAS SET AT THE INTERSECTION OF THE N-S AND E-W CENTERLINES OF SAID N.E. 1/4 AS SHOWN. A CLOSED MEANDER TRANSIT AND E.D.M. TRAVERSE WAS RUN BETWEEN ALL FOUND CORNERS AND USED FOR PRIMARY CONTROL. A CLOSED MEANDER TRANSIT AND E.D.M. TRAVERSE WAS RUN ALONG ALL BLAZED AND POSTED PROPERTY LINES. OFFSETS WERE COMPUTED FROM THIS MEANDER TRAVERSE TO THE TRUE PROPERTY LINE. PROPERTY LINES WERE MARKED WITH RED PAINTED BLAZES, 1/2" x 60" IRON RODS AND RED RIBBON. A WHITE TREE FARM SIGN AND A YELLOW PROPERTY LINE SIGN, WITH P.L.S. NO. 1039 AND DISTANCE TO NEAREST CORNER STAMPED UPON, IS ATTACHED TO EACH ROD. RODS ARE REFERENCED BY TWO 3" x 3" ALUMINUM TAGS NAILED TO NEARBY TREES. TAGS NOTE BEARING AND DISTANCE FROM TREE TO IRON ROD.

Les Roberts

SOUTH 1/4 CORNER SECTION 35 ONLY
 FD. 1954 G.L.O. BRASS CAP
 17" MAPLE STUMP, N58°W, 26.6' (NO MARKS), 1966 B.T.
 42" CEDAR SNAG, S35°W, 25.6' (NO MARKS), - B.T.
 63" FIR STUMP, N62°E, 78.5' (SCRIBE VIS.), 1966 B.T.

S.E. CORNER SECTION 35
 FD. 1954 G.L.O. BRASS CAP
 38" FIR STUMP, N82°E, 153.5' (NO MARKS), 1891 B.T.
 45" FIR STUMP, S81°E, 118.0' (NO MARKS), 1891 B.T.
 13" HEMLOCK STUMP, N14°W, 8.8' (SCRIBE VIS.), 1954 B.T.
 18" HEMLOCK STUMP, N55°E, 22.1' (SCRIBE VIS.), 1954 B.T.

M 96-26
 58/280(N)