

COUNTY SURVEYORS FILE DATA  
DO NOT REMOVE FROM OFFICE

FILED *BS*  
RECEIVED *BS*  
MAR 28 1984  
COUNTY SURVEYORS  
EUGENE, OREGON

**"A" NORTH 1/16 CORNER**

FD. 1983 B.L.M. BRASS CAP  
22" FIR, N61°W, 14.8' (SCRIBE VIS.), 1983 B.T.  
22" FIR, S18°E, 40.1' (SCAR VIS.), 1975 B.T.  
S.E. B.T. WAS SCRIBED BY B.L.M. IN 1975

**"B" SOUTH 1/16 CORNER**

FD. 1983 B.L.M. BRASS CAP  
24" FIR, S15°W, 54.5' (SCAR VIS.), 1975 B.T.  
36" FIR, S38°E, 14.5' (SCRIBE VIS.), 1983 B.T.  
S.W. B.T. WAS SCRIBED BY B.L.M. IN 1975

**"C" EAST 1/16 CORNER**

FD. 1975 B.L.M. BRASS CAP  
20" FIR, N33°E, 33.9' (SCAR VIS.), 1975 B.T.  
45" FIR, S67°E, 81.0' (SCAR VIS.), 1975 B.T.

**"D" C.S. 1/16 CORNER**

SET 1/2" x 36" IRON PIPE AND BRASS CAP  
BURIED ORANGE M.M. UNDER PIPE  
10" HEMLOCK, S31°E, 24.5' (SCRIBED/PAINTED)  
16" FIR, N87°E, 39.9' (SCRIBED/PAINTED)

**"E" S.E. 1/16 CORNER**

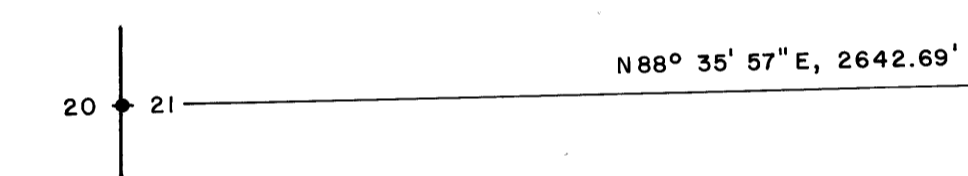
SET 1/2" x 36" IRON PIPE AND BRASS CAP  
BURIED ORANGE M.M. UNDER PIPE  
27" FIR, S08°W, 32.2' (SCRIBED/PAINTED)  
43" FIR, N66°E, 34.3' (SCRIBED/PAINTED)

**"F" C.E. 1/16 CORNER FOR SE 1/4**

SET 1/2" x 36" IRON PIPE AND BRASS CAP  
BURIED ORANGE M.M. UNDER PIPE  
18" FIR, S06°W, 21.0' (SCRIBED/PAINTED)  
31" FIR, S81°E, 12.2' (SCRIBED/PAINTED)

**"G" C.E. 1/16 CORNER FOR NE 1/4**

SET 1/2" x 36" IRON PIPE AND BRASS CAP  
BURIED ORANGE M.M. UNDER PIPE  
25" ALDER, S09°E, 19.3' (SCRIBED/PAINTED)  
36" FIR, N54°E, 50.0' (SCRIBED/PAINTED)



**WEST 1/4 CORNER SECTION 21**

FD. 1975 B.L.M. BRASS CAP  
36" FIR STUB, S30°W, 18.8' (NO MARKS), 1894 B.T.  
48" FIR, S52°E, 74.6' (SCRIBE VIS.), 1894 B.T.  
24" FIR, N55°W, 34.8' (SCAR VIS.), 1975 B.T.

**"H" CENTER 1/4 CORNER SECTION 21**

SET 1/2" x 36" IRON PIPE AND BRASS CAP  
BURIED ORANGE M.M. UNDER PIPE  
9" FIR, S08°W, 11.5' (SCRIBED/PAINTED)  
19" FIR, N39°E, 19.8' (SCRIBED/PAINTED)

**LOCATION OF 1/2" IRON RODS**

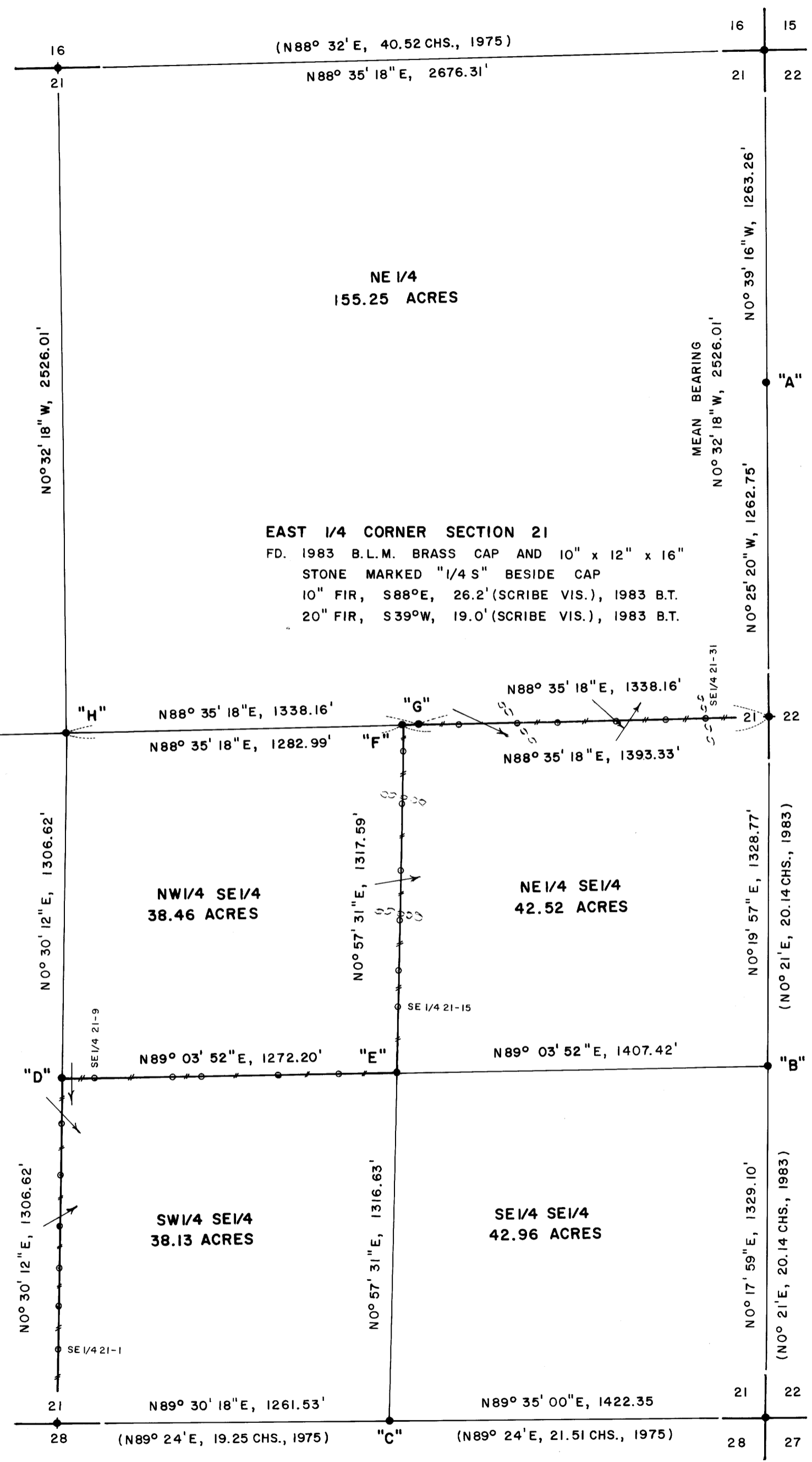
S. 1/4 COR.	NORTH	S.E. 1/16 COR.	WEST	(M.M.)
SE 1/4 21-1	279'	SE 1/4 21-15	252'	NORTH
SE 1/4 21-2	442'	SE 1/4 21-16	388'	NORTH
SE 1/4 21-3	582'	SE 1/4 21-17	580'	NORTH
SE 1/4 21-4	745'	SE 1/4 21-18	764'	NORTH
SE 1/4 21-5	937'	SE 1/4 21-19	1019'	NORTH
SE 1/4 21-6	1135'	SE 1/4 21-20	1220'	NORTH
C.S. 1/16 COR.	1307'	C.E. 1/16 "F"	1318'	NORTH
SE 1/4 21-9	126'	C.E. 1/16 "G"	1338'	WEST
SE 1/4 21-10	419'	SE 1/4 21-26	1175'	WEST
SE 1/4 21-11	529'	SE 1/4 21-27	951'	WEST
SE 1/4 21-12	819'	SE 1/4 21-28	797'	WEST
SE 1/4 21-13	1050'	SE 1/4 21-29	576'	WEST
S.E. 1/16 COR.	1272'	SE 1/4 21-30	389'	WEST
		SE 1/4 21-31	238'	WEST
		E. 1/4 COR.	0'	WEST

**NORTH 1/4 CORNER SECTION 21**

FD. 1975 B.L.M. BRASS CAP  
24" FIR STUMP, N24°E, 18.6' (NO MARKS), 1874 B.T.  
36" MAPLE, S13°E, 5.0' (NO MARKS), 1874 B.T.  
10" FIR, N38°E, 19.8' (SCAR VIS.), 1975 B.T.  
28" HEMLOCK, S24°W, 31.7' (SCRIBE VIS.), 1975 B.T.

**N.E. CORNER SECTION 21**

FD. 1973 B.L.M. BRASS CAP  
18" FIR, S85°E, 11.1' (SCAR VIS.), 1939 B.T.  
18" FIR, N43°E, 9.0' (SCAR VIS.), 1939 B.T.  
38" FIR, N40°W, 54.4' (SCAR VIS.), 1939 B.T.  
32" FIR, S66°W, 32.6' (SCAR VIS.), 1962 B.T.  
12" FIR, N85°E, 11.1' (SCAR VIS.), 1973 B.T.



**SOUTH 1/4 CORNER SECTION 21**

FD. 1975 B.L.M. BRASS CAP  
42" FIR, S25°E, 20.2' (SCAR VIS.), 1894 B.T.  
58" FIR, N11°E, 35.0' (SCAR VIS.), 1894 B.T.

**S.E. CORNER SECTION 21**

FD. 1975 B.L.M. BRASS CAP AND 18" x 14" x 8" STONE WITH 3 NOTCHES ON EAST SIDE AND 2 NOTCHES ON SOUTH SIDE.  
17" FIR, S47°W, 8.7' (SCRIBE VIS.), 1975 B.T.  
20" MAPLE, N29°E, 42.4' (SCRIBE VIS.), 1975 B.T.  
24" FIR, S38°E, 39.6' (SCRIBE VIS.), 1975 B.T.  
29" FIR, N30°W, 54.6' (SCRIBE VIS.), 1975 B.T.

SURVEY OF  
SECTION 21, T22S, R9W, W.M.  
DOUGLAS COUNTY, OREGON  
FOR  
INTERNATIONAL PAPER COMPANY  
BY  
ROBERTS SURVEYING INC.  
29 WEST 29TH STREET  
EUGENE, OREGON 97405  
FEBRUARY 13, 1984

**LEGEND**

- CORNERS FOUND AND USED FOR CONTROL
- CORNERS SET, 1/2" x 36" IRON PIPES AND BRASS CAPS. CAPS STAMPED S-T-R, DATE AND P.L.S. NO. 1039.
- LINES BLAZED AND POSTED THIS SURVEY.
- ( ) DATA OF RECORD, 1973-1979 AND 1983 B.L.M. SURVEYS.
- BASIS OF BEARING, SOLAR OBSERVATION.
- DISTANCES TO B.T.'S ARE CENTER MEASURE.
- ALL NEW B.T.'S ARE SCRIBED AND HAVE A BRASS WASHER STAMPED "P.L.S. 1039" NAILED TO LOWER BLAZE
- (M.M.) INDICATES LOCATION OF BURIED MAGNETIC MARKERS. MARKERS ARE ORANGE IN COLOR AND ARE BURIED, 12" TO 18" DEEP, BESIDE IRON RODS
- SCALE 1" = 400'

**NARRATIVE**

I, LES ROBERTS, REGISTERED PROFESSIONAL LAND SURVEYOR DO CERTIFY THAT I HAVE CORRECTLY SURVEYED SECTION 21 IN ACCORDANCE TO THE 1973 MANUAL OF INSTRUCTIONS FOR THE SURVEY OF THE PUBLIC LANDS OF THE UNITED STATES. THE EXTERIOR BOUNDARIES OF SECTION 21 WERE RE-SURVEYED BY THE B.L.M. CADASTRAL SURVEYOR FROM COOS BAY, OREGON BEGINNING IN AUGUST OF 1973 AND FINISHING IN DECEMBER OF 1979 AS NOTED ON THE OFFICIAL PLAT APPROVED FEBRUARY 25, 1980. I STARTED A SUBDIVISIONAL SURVEY OF SECTION 21 IN MARCH OF 1983 AND AT THIS TIME I FOUND THE ORIGINAL STONE MARKING THE EAST 1/4 CORNER OF SECTION 21. THIS STONE HAD BEEN OVERLOOKED BY THE B.L.M. CADASTRAL SURVEYOR IN THEIR 1973-1979 SURVEY. SEE NARRATIVE IN SURVEY OF SECTION 22, T22S, R9W FOR MORE DETAILS CONCERNING OVERLOOKED STONES. SECTION 21 WAS SUBDIVIDED IN ACCORDANCE TO THE WRITTEN INSTRUCTIONS RECEIVED FROM THE PORTLAND OFFICE OF THE B.L.M. A COPY OF THIS MARCH 23, 1983 LETTER IS ON RECORD IN FILE NO. DOUGLAS COUNTY SURVEYORS OFFICE. THE NE 1/4 OF SECTION 21 WAS PROTRACTED BY W.H. BYARS IN 1874 AS SHOWN ON THE PLAT APPROVED JUNE 21, 1878. E.O. WORRICK SURVEYED THE REMAINDER OF SECTION 21 IN 1894 AND THE LOTTING ON WORRICK'S PLAT SHOW THAT SECTION 21 WAS COMPLETED BY PROTECTING THE NE 1/4 WITH 160 ACRES AND CREATING A BROKEN CENTERLINE SITUATION AT THE C 1/4 CORNER. THE C 1/4 CORNER WAS SET BY SURVEYING THE NORTH 1/2 OF THE N-S & SOUTHERLY, PARALLEL TO THE NORTH 1/2 OF THE EAST LINE OF SECTION 21, TO ITS INTERSECTION WITH THE EAST 1/2 OF THE E-W & SURVEYED WESTERLY, PARALLEL TO THE EAST 1/2 OF THE NORTH LINE OF SECTION 21. THE C.S. 1/16 CORNER WAS SET HALFWAY BETWEEN THE C. 1/4 CORNER AND THE S. 1/4 CORNER AS SHOWN. THE SE 1/16 CORNER WAS SET AT THE INTERSECTION OF THE N-S AND E-W CENTERLINES OF SAID SE 1/4. THE 2 C.E. 1/16 CORNERS WERE SET AS PER INSTRUCTIONS. A CLOSED MEANDER TRANSIT & E.D.M. TRAVERSE WAS RUN BETWEEN ALL FOUND CORNERS & USED FOR CONTROL. A CLOSED MEANDER TRANSIT & CHAIN TRAVERSE WAS RUN ALONG ALL BLAZED AND POSTED PROPERTY LINES. OFFSETS WERE COMPUTED FROM THIS MEANDER TRAVERSE TO THE TRUE PROPERTY LINE. PROPERTY LINES WERE MARKED WITH RED PAINTED BLAZES, 1/2" x 60" IRON RODS & RED RIBBON. A YELLOW PROPERTY LINE SIGN, WITH P.L.S. NO. 1039 & DISTANCE TO NEAREST CORNER STAMPED UPON, IS ATTACHED TO EACH ROD. RODS ARE REFERENCED BY A 3" x 3" ALUMINUM TAG NAILED TO NEARBY TREES. TAG NOTES BEARING AND DISTANCE FROM TREE TO IRON ROD.

58/280(W)  
M 96-24

58/280(W)  
M 96-24