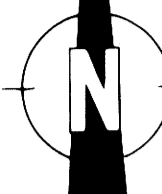


PROPERTY SURVEY FOR INTERNATIONAL PAPER COMPANY

SECTION 12, TWP. 21 S., RGE. 11 W., W.M.

DOUGLAS COUNTY, OREGON



DATE 2/3/84
SCALE 1" = 400'
BASIS OF BEARING IS THE SOUTH
LINE OF SECT. 12 PER HINTZ SURVEY.

SURVEY BY: Stuntzner Engineering & Forestry
705 South 4th/P.O. Box 118
Coos Bay, Oregon 97420

NARRATIVE: This subdivision of Section 12 is based on the original survey by Meldrum in 1866, a retracement of a survey by Theil in 1891, a retracement survey of the East line by the G.L.O. in 1919, and a recent survey by R. Hintz in 11/83. The North 1/4 corner was set in a survey by R. Kintigh in 1956 and was located out of position as shown.

A Wild T-16 Theodolite and D14 EDM were used in the survey. Assisting in the survey were Larry Hall (L.S.), Tim Van Vleet, Gary Fastwood, Tom Hoshall, and Ralph Dunham (L.S.I.T.).

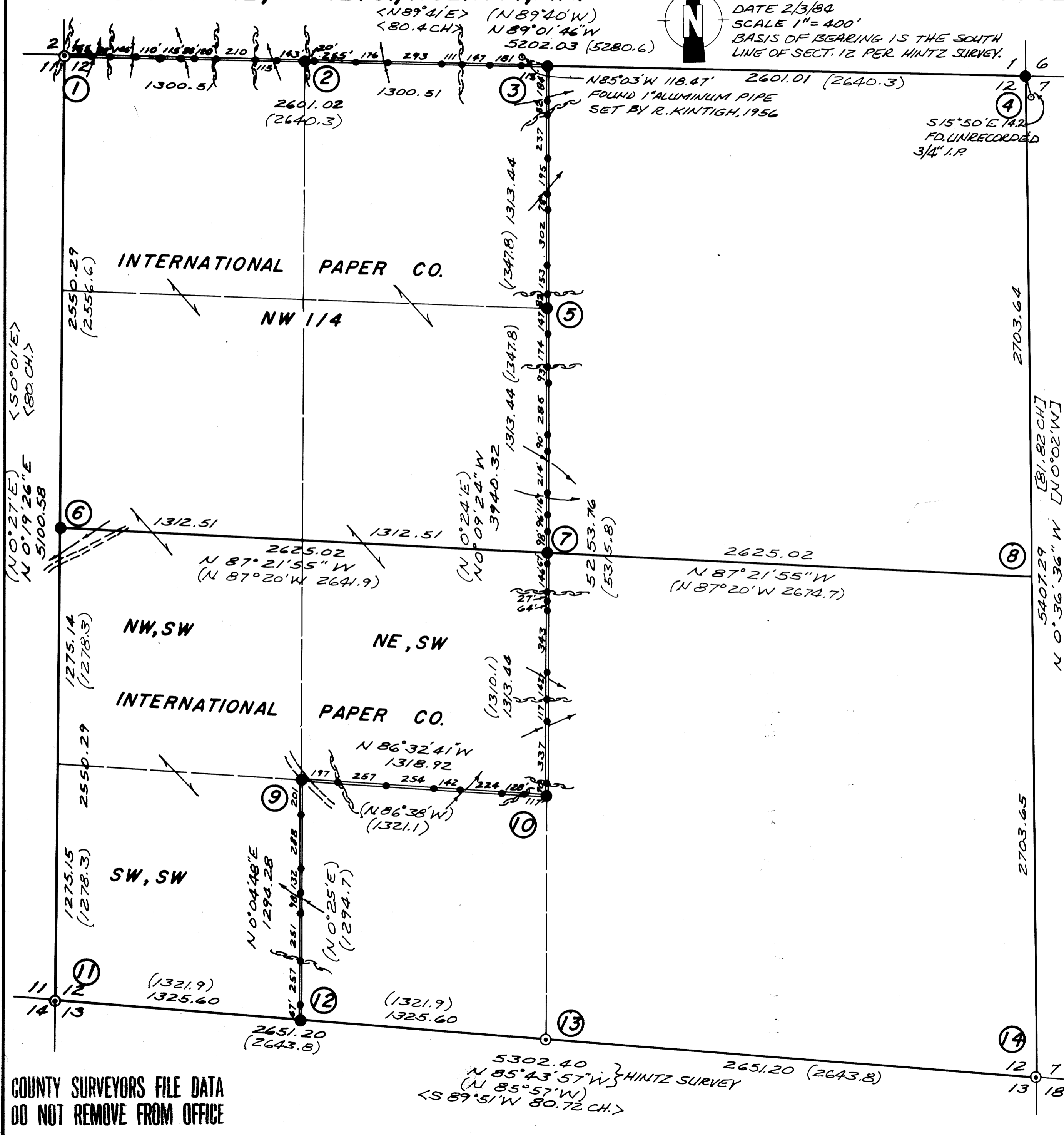
LEGEND
< > THEIL SURVEY 1891
() KINTIGH RECORD
[] GLO 1919 RECORD

- Corner Found
- Corner Set: Set 1/2"x30" iron rods with 2" aluminum cap stamped with PLS 1342 and as prescribed.
- Line Markers set on property lines with tags are 1/4"x60" iron rods.
- ~ Ridge
- ~ Creek
- - - Road

NOTES: Property lines are flagged in red ribbon and trees on both sides blazed. Foreign side tree blazes are painted red. Trees I scribed are marked as described in the Manual of Sbdv. of Public Lands.

CORNER NOTES:

- 1 Fd. the NW corner of Sec. 12. It is a 2" B.C.I.P. set by Shaner in 1981. Cap stamped T21S, R11W, W.M., S1, S2, S11, S12, PLS 430, 1981.
Fd. Scr. 36" D.fir N32 1/2°W, 21.0'
" " 14" W.R.Cedar N61°E, 21.0'
" " 30" W.R.Cedar S14°E, 30.1'
" " 26" Hem. S45°W, 4.6'
Corner is located on top of a ridge.
- 2 Set W 1/16 one-fourth dist. from NW corner to NE corner and on line.
I Scr. 24" Cedar N89°E, 20.8'
" " 6" Hemlock S7°W, 8.2'
Corner is located on a West slope just below ridge.
- 3 Set N 1/2 corner half way & on line between NW & NE corners of Sec. 12. No orig. BT's found.
I Scr. 24" Cedar S7°W, 18.0'
" " 12" Alder N52°E, 24.4'
Corner is on South slope of hill.
- 4 Set NE corner Sec. 12 from bearing tree & ridge calls.
Dist. to creek to North was 14.92 ch. 1866 survey dist. was 15.0 ch. & 1891 survey 15.2 ch. Dist. to ridge to East was 3.06 ch. 1919 survey dist was 3.00 ch. Dist. to ridge to South was 1.50 ch. 1891 survey dist was 1.50 ch. & 1919 survey was 3.32 ch.
I Scr. 10" D.fir N40°E, 40.9'
" " 9" Cedar S89°E, 47.9'
" " 12" Alder S45°E, 10.5'
" " double 28" Cedar S1°E, 43.6'
The 2-28" Cedars recorded in 1891 survey as bearing S 1/2°E & S 1/2°W 66 lks. have grown together forming a 48" Cedar S1°E 43.6' (66 lks.) The face is closed.
Fd. 36" Cedar snag w/face 44.2' (67 lks.) S81°E. The 1891 call was a 10" Cedar N81°E 67 lks. Corner is on the North face of a hill at the top of a slide area.
- 5 Set CN 1/16 half way between N 1/2 and C 1/2 and on line.
I Scr. 32" D.fir N80°E 6.1'
" " 10" Alder S29°W 24.2'
- 6 Set 1/2 corner half way and on line between SW and NW corners of Sec. 12. No orig. BT's found.
I Scr. 30" Cedar S69°W 18.5'
" " 10" Cedar S61°E 14.9'
Corner is on the SE slope of a hill 150'± above a creek.
- 7 Set C 1/2 at intersection of E-W and N-S centerlines of the section.
I Scr. 14" Alder S58°W, 13.9'
" " 12" Alder N46°E, 27.8"
A 50" Cedar brs. S10°E, 59'. It was not scribed.
- 8 The East 1/4 was computed as halfway and on line between the NE corner and SE corner of Section 12. The witness corner set in 1919 by the BLM was not found. A new corner was not set.
- 9 Set SW 1/16 at intersection of E-W and N-S centerlines.
I Scr. 14" D.fir N80°W 27.4'
" " 8" Alder S5°W 14.0'
The corner falls in the road winding up the hill.
- 10 Set S 1/16 half way between S 1/2 and C 1/2 and on line.
I Scr. 5" Fir N58°E, 24.9'
" " 10" Fir S87°W, 13.9'
Corner is on the East slope of a hill.
- 11 Found SW corner I.P.B.C. by BLM 1957.
- 12 Found W 1/16 1/4 I.P.B.C. stamped PLS 497, 1983 with prescribed markings.
Fd. Scr. 12" Fir S43°W, 14.7'
" " 5" Willow N64°E, 9.6'
- 13 Found S 1/2 1/4 I.P.B.C. stamped PLS 497, 1983 with prescribed markings.
Fd. Scr. 14" Alder S24°30'W, 10.5'
" " 8" Hemlock N83°30'W, 20.9'
- 14 Found SE corner; found original 60" Cedar corner tree uprooted with spike in center of rootwad. Original 24" Cedar (now 50") S35°W, 34.3' (52 lks.) to orig. face of 24" tree. Scribing done in 1891 has healed over.



COUNTY SURVEYORS FILE DATA
DO NOT REMOVE FROM OFFICE

REGISTERED
PROFESSIONAL
LAND SURVEYOR
Ronald E. Stuntzner
OREGON
SEPTEMBER 23, 1977
RONALD E. STUNTZNER
1342

MAP FILE M 96-85

MAP FILE M 96-85