

NORTH 1/4 CORNER SECTION 26

FD. 1954 G.L.O. BRASS CAP  
 30" FIR STUMP, S15°E, 22.6' (SCRIBE VIS.), 1954 B.T.  
 54" FIR STUMP, N71°W, 16.0' (SCRIBE VIS.), 1954 B.T.

LOCATION OF 1/2" IRON RODS

S.W. COR.				I-26-15		
S26-1	173'	EAST (M.M.)	I-26-16	1036'	EAST (M.M.)	
S26-2	269'	EAST (M.M.)	I-26-17	1164'	EAST (M.M.)	
S26-3	407'	EAST (M.M.)	CS 1/16 COR.	1312'	EAST (M.M.)	
S26-4	589'	EAST (M.M.)	I-26-19	158'	EAST (M.M.)	
S26-5	753'	EAST (M.M.)	I-26-20	214'	EAST (M.M.)	
S26-6	896'	EAST (M.M.)	I-26-21	440'	EAST (M.M.)	
W. 1/16 COR.	1277'	EAST (M.M.)	I-26-22	615'	EAST (M.M.)	
I-26-1	221'	NORTH (M.M.)	I-26-23	796'	EAST (M.M.)	
I-26-2	418'	NORTH (M.M.)	I-26-24	912'	EAST (M.M.)	
I-26-3	549'	NORTH (M.M.)	I-26-25	1083'	EAST (M.M.)	
I-26-4	708'	NORTH (M.M.)	I-26-26	1150'	EAST (M.M.)	
I-26-5	865'	NORTH (M.M.)	I-26-27	1295'	EAST (M.M.)	
I-26-6	1040'	NORTH (M.M.)	I-26-28	1429'	EAST (M.M.)	
I-26-7	1090'	NORTH (M.M.)	SE 1/16 COR.	1475'	EAST (M.M.)	
I-26-8	1204'	NORTH (M.M.)	I-26-30	60'	SOUTH (M.M.)	
SW 1/16 COR.	1339'	NORTH (M.M.)	I-26-31	232'	SOUTH (M.M.)	
I-26-10	220'	EAST (M.M.)	I-26-32	416'	SOUTH (M.M.)	
I-26-11	302'	EAST (M.M.)	I-26-33	617'	SOUTH (M.M.)	
I-26-12	342'	EAST (M.M.)	I-26-34	819'	SOUTH (M.M.)	
I-26-13	414'	EAST (M.M.)	I-26-35	983'	SOUTH (M.M.)	
I-26-14	605'	EAST (M.M.)	I-26-36	1158'	SOUTH (M.M.)	
I-26-15	784'	EAST (M.M.)	E 1/16 COR.	1331'	SOUTH (M.M.)	

DO NOT REMOVE FROM OFFICE

FILED *BS*  
 RECEIVED *BS*  
 MAR 22 1984  
 COUNTY SURVEYOR  
 DOUGLAS COUNTY, ORE

- "A" WEST 1/16 CORNER  
 SET 2" x 36" ALUMINUM PIPE AND CAP  
 BURIED PURPLE M.M. UNDER PIPE  
 10" ALDER, S17°E, 12.9' (BARK SCRIBED/PAINTED)  
 24" FIR, N50°E, 144.0' (SCRIBED/PAINTED)
- "B" S.W. 1/16 CORNER  
 SET 2" x 36" ALUMINUM PIPE AND CAP  
 BURIED PURPLE M.M. UNDER PIPE  
 8" ALDER, S48°E, 12.5' (BARK SCRIBED/PAINTED)  
 SET R.R. SPIKE IN DRILL HOLE IN ROCK FACE  
 S40°W, 26.7' TO SPIKE
- "C" C.S. 1/16 CORNER  
 SET 2" x 36" ALUMINUM PIPE AND CAP  
 BURIED PURPLE M.M. UNDER PIPE  
 35" MAPLE, S13°W, 86.7' (SCRIBED/PAINTED)  
 SET R.R. SPIKE IN SIDE OF 42" FIR  
 STUMP, N68°E, 2.5' TO SPIKE
- "D" S.E. 1/16 CORNER  
 SET 2" x 36" ALUMINUM PIPE AND CAP  
 BURIED PURPLE M.M. UNDER PIPE  
 17" FIR, N74°E, 15.0' (SCRIBED/PAINTED)  
 25" FIR, N62°W, 10.4' (SCRIBED/PAINTED)
- "E" EAST 1/16 CORNER  
 SET 2" x 36" ALUMINUM PIPE AND CAP  
 BURIED PURPLE M.M. UNDER PIPE  
 20" FIR, N79°E, 19.2' (SCRIBED/PAINTED)  
 32" FIR, S20°W, 10.5' (SCRIBED/PAINTED)

SURVEY OF  
 SECTION 26, T20S, R9W, W.M.  
 DOUGLAS COUNTY, OREGON  
 FOR  
 INTERNATIONAL PAPER COMPANY  
 BY  
 ROBERTS SURVEYING INC.  
 29 WEST 29TH STREET  
 EUGENE, OREGON 97405  
 FEBRUARY 27, 1984

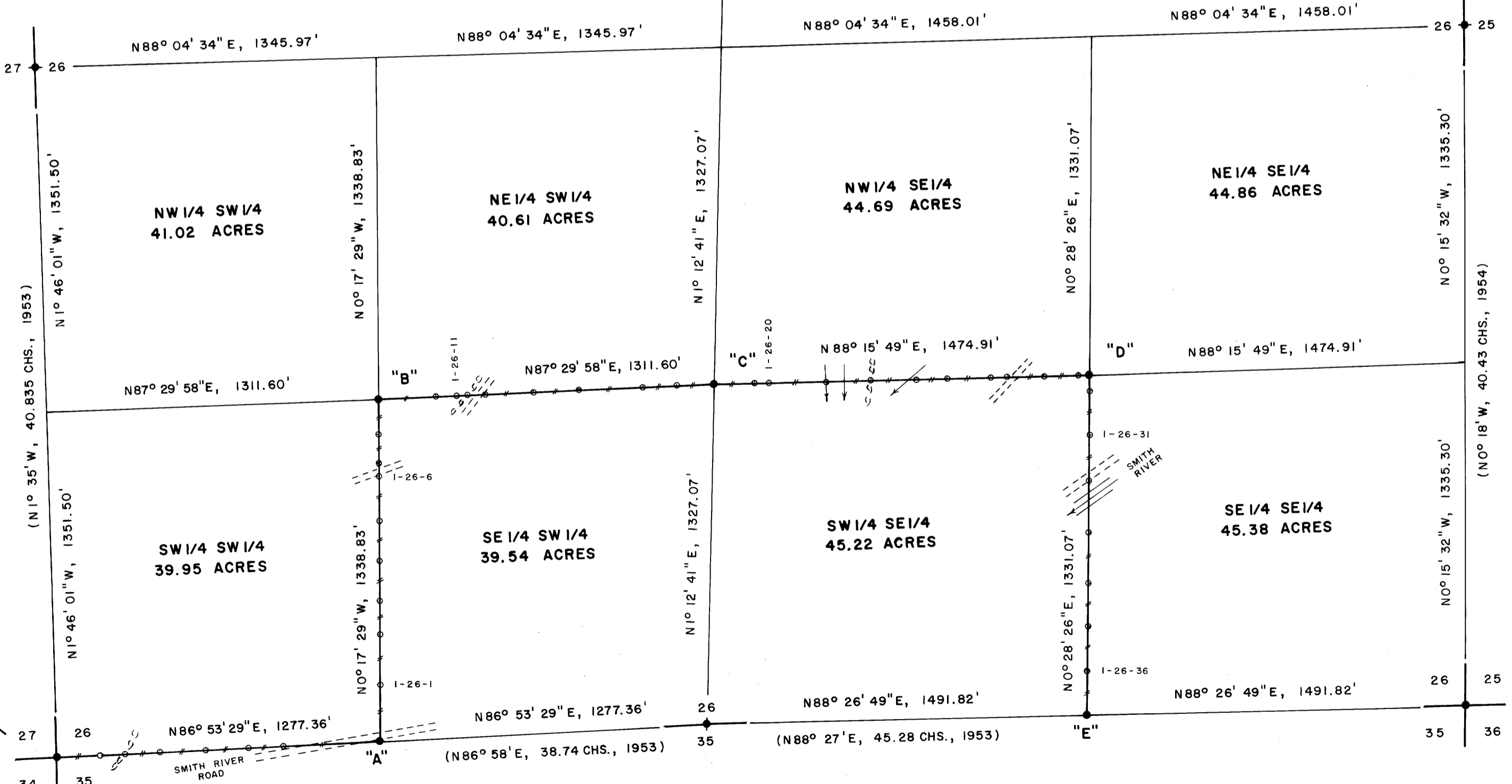
EAST 1/4 CORNER SECTION 26

FD. 1954 G.L.O. BRASS CAP AND 1967 FENCE POST  
 48" FIR STUMP, N49°W, 16.1' (SCRIBE VIS.), 1891 B.T.  
 (THIS B.T. WAS RESCRIBED BY CADASTRAL IN 1967)  
 57" FIR STUMP, N83°E, 30.6' (SCAR VIS.), 1891 B.T.

LEGEND

- CORNERS FOUND AND USED FOR CONTROL
- CORNERS SET, 2" ALUMINUM PIPES WITH ALUMINUM CAPS. CAPS STAMPED S-T-R, DATE & P.L.S. NO.
- — — — — LINES BLAZED AND POSTED THIS SURVEY
- ( ) DATA OF RECORD, 1891 AND 1953 G.L.O. SURVEYS
- BASIS OF BEARING, SOLAR OBSERVATION
- DISTANCE TO B.T.'S ARE CENTER MEASURE
- ALL NEW B.T.'S ARE SCRIBED AND HAVE A BRASS WASHER STAMPED "P.L.S. 1039" NAILED TO LOWER BLAZE.
- (M.M.) INDICATES LOCATION OF BURIED MAGNETIC MARKERS. MARKERS ARE FLUORESCENT ORANGE IN COLOR AND ARE BURIED 12" TO 18" DEEP BESIDE EACH ROD.
- SCALE 1" = 400'

*Les Roberts*



NARRATIVE

I, LES ROBERTS, REGISTERED PROFESSIONAL LAND SURVEYOR DO CERTIFY THAT I HAVE CORRECTLY SURVEYED SECTION 26 IN ACCORDANCE TO THE 1973 MANUAL OF INSTRUCTIONS FOR THE SURVEY OF THE PUBLIC LANDS OF THE UNITED STATES. THE POSITION FOR THE CENTER 1/4 CORNER WAS DETERMINED BY INTERSECTING THE N-S AND E-W CENTERLINES OF SECTION 26. THE WEST 1/16 CORNER AND THE EAST 1/16 CORNER ON THE SOUTH LINE OF SECTION 26 WERE SET HALFWAY BETWEEN THE SOUTH 1/4 CORNER AND THE S.W. AND S.E. SECTION CORNERS RESPECTIVELY AS SHOWN. THE C.S. 1/16 CORNER WAS SET HALFWAY BETWEEN THE CENTER 1/4 CORNER AND THE SOUTH 1/4 CORNER AS SHOWN. THE S.W. 1/16 CORNER WAS SET AT THE INTERSECTION OF THE N-S AND E-W CENTERLINES OF SAID S.W. 1/4. THE S.E. 1/16 CORNER WAS SET AT THE INTERSECTION OF THE N-S AND E-W CENTERLINES OF SAID S.E. 1/4. A CLOSED MEANDER TRANSIT AND E.D.M. TRAVERSE WAS RUN BETWEEN ALL FOUND CORNERS AND USED FOR PRIMARY CONTROL. A CLOSED MEANDER TRANSIT AND E.D.M. TRAVERSE WAS RUN ALONG ALL BLAZED AND POSTED PROPERTY LINES. OFFSETS WERE COMPUTED FROM THIS MEANDER TRAVERSE TO THE TRUE PROPERTY LINE. PROPERTY LINES WERE MARKED WITH RED PAINTED BLAZES, 1/2" x 60" IRON RODS AND RED RIBBON. A WHITE TREE FARM SIGN AND A YELLOW PROPERTY LINE SIGN, WITH P.L.S. NO. 1039 AND DISTANCE TO NEAREST CORNER STAMPED UPON, IS ATTACHED TO EACH ROD. RODS ARE REFERENCED BY TWO 3" x 3" ALUMINUM TAGS NAILED TO NEARBY TREES. TAGS NOTE BEARING AND DISTANCE FROM TREE TO IRON ROD.

SOUTH 1/4 CORNER SECTION 26

FD. 1953 G.L.O. BRASS CAP & 1967 FENCE POST  
 24" FIR, S36°W, 8.0' (SCAR VIS.), 1953 B.T.  
 38" FIR, N45°E, 6.1' (SCAR VIS.), 1953 B.T.

S.E. CORNER SECTION 26

FD. 1954 G.L.O. BRASS CAP  
 31" FIR STUMP, N78°W, 16.0' (NO MARKS), 1891 B.T.  
 35" FIR STUMP, S70°E, 11.8' (NO MARKS), 1891 B.T.  
 15" FIR STUMP, N65°W, 45.4' (SCRIBE VIS.), 1954 B.T.  
 19" FIR STUMP, S33°W, 38.8' (SCRIBE VIS.), 1954 B.T.  
 20" FIR STUMP, N62°E, 11.6' (SCRIBE VIS.), 1954 B.T.  
 28" FIR STUMP, S51°E, 42.7' (SCRIBE VIS.), 1954 B.T.

WEST 1/4 CORNER SECTION 26

FD. 1953 G.L.O. BRASS CAP & 1967 FENCE POST  
 BURIED PURPLE MAGNETIC MARKER UNDER PIPE  
 18" HEMLOCK STUMP, N69°W, 31.0' (NO MARKS), 1953 B.T.  
 33" FIR STUMP, S33°E, 24.4' (SCAR VIS.), 1953 B.T.

S.W. CORNER SECTION 26  
 FD. 1953 G.L.O. BRASS CAP & 1967 FENCE POST  
 18" FIR, S11°W, 57.4' (SCAR VIS.), 1953 B.T.  
 25" FIR, N45°W, 50.2' (SCAR VIS.), 1953 B.T.  
 25" FIR, S84°E, 25.2' (SCAR VIS.), 1953 B.T.  
 30" FIR, N83°E, 27.6' (SCAR VIS.), 1953 B.T.

58/2801(4)  
 M 96-20