

M 95-80 A

# RECORD OF SURVEY

COOKED WASSEN CADASTRAL SURVEY  
FOR THE U.S.D.A. FOREST SERVICE  
SLUGLAW NATIONAL FOREST  
SECTIONS 15 & 22, T21S, R10W, W.M.  
DOUGLAS COUNTY, OREGON  
DECEMBER 1983

COUNTY SURVEYORS FILE DATA  
DO NOT REMOVE FROM OFFICE

I, HERMAN A. PIESKE, REGISTERED LAND SURVEYOR IN THE STATE OF OREGON, HEREBY CERTIFY THAT THIS PLAN AND THE NOTES HEREON ARE A CORRECT REPRESENTATION OF A SURVEY I PERFORMED DURING JUNE - DECEMBER 1983, AT THE REQUEST OF THE U.S.D.A. FOREST SERVICE IN ACCORDANCE WITH THE STATUTES OF THE STATE OF OREGON AND THE ARTICLES OF MY CONTRACT.

THE STATE OF OREGON  
PROFESSIONAL  
LAND SURVEYOR

HERMAN A. PIESKE

OREGON  
JULY 14, 1978  
HERMAN A. PIESKE  
1651

HERMAN A. PIESKE  
P.L.S. 1651

## NARRATIVE:

### PURPOSE:

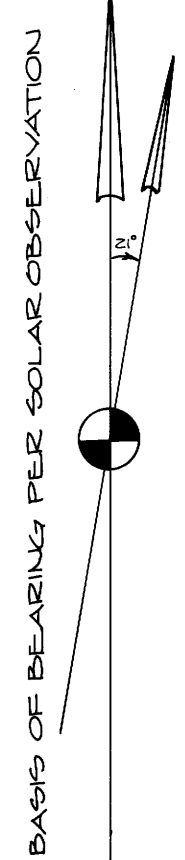
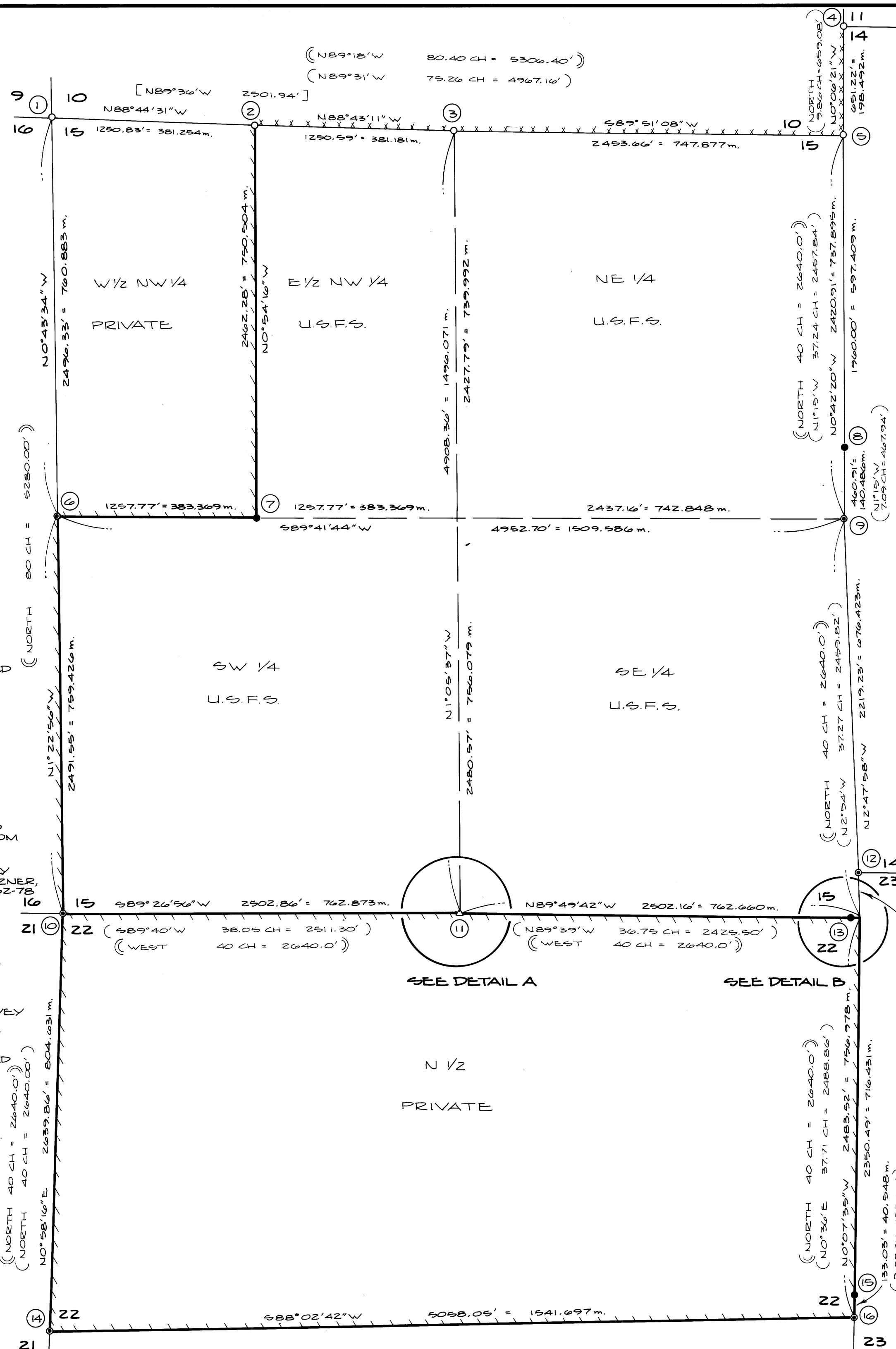
TO MONUMENT AND MARK THE BOUNDARIES BETWEEN THE U.S.D.A. FOREST SERVICE LANDS AND PRIVATE OWNERSHIP.

A HISTORY OF PRIOR SURVEYS WHICH PERTAIN TO THIS SURVEY IS AS FOLLOWS:

IN 1879, W.M. THEIL, UNDER CONTRACT NO. 342, SURVEYED SECTION 15 AND THE N 1/2 WEST LINE, NORTH & EAST LINES, E 1/2 SOUTH LINE, SECTION 22. IN 1919, FRED W. RODOLF, ELMER F. STRICKLER, GERALD A. SORRELS, FRED MENSCH AND CHARLES COLLIER, UNDER CONTRACT NO. 36, RESURVEYED THE NORTH AND EAST LINES OF SECTION 15 AND THE NORTH LINE AND THE NORTH HALF OF THE WEST AND EAST LINES OF SECTION 22. IN 1977, RONALD E. STUNTZNER, R.E. 6248, SURVEYED THE WEST 1/2 OF THE LINE BETWEEN SECTIONS 10 & 15 AND SET THE W 1/6 CORNER ON THE LINE BETWEEN SECTIONS 10 & 15, PER M62-78.

### PROCEDURE:

THIS SURVEY WAS ACCOMPLISHED BY RANDOM TRAVERSE AND LONG RANGE CONTROL; WITH ALL KNOWN AND FOUND CORNERS TIED IN. ON THE EAST LINE OF SECTION 15, I FOUND AND REMONUMENTED THE 1/4 CORNER TO SECTION 15 ONLY; THE SOUTHWEST CORNER OF SECTION 14; THE 1/4 CORNER TO SECTION 22 ONLY AND THE SECTION CORNER COMMON TO SECTIONS 15, 16, 21 AND 22. AFTER A DILIGENT SEARCH I PROPORTIONED IN THE WEST 1/4 CORNER OF SEC. 14 ONLY & THE WEST 1/4 CORNER OF SEC. 23 ONLY. THE 1/4 CORNER BETWEEN SEC. 15 & 16 WAS FOUND; IT WAS SET DURING THE 1919 G.L.O. SURVEY, BUT WAS NOT RECORDED IN ANY OF THE FIELD NOTES. IT FIT THE TOPO CALLS & MID-POINT LOCATION FAIRLY WELL, SO IT WAS ACCEPTED & USED ON THIS SURVEY. NO B.T.'S WERE FOUND, LINE TREES WERE SEARCHED FOR, BUT NOT FOUND. A WITNESS CORNER WAS SET FOR THE NE CORNER OF SECTION 22, AS THE TRUE CORNER FALLS WITHIN A SLIDE AREA. THE CORNERS REMONUMENTED & PROPORTIONED WERE DONE ACCORDING TO THE 1973 BLM MANUAL OF SURVEYING INSTRUCTIONS. ALL OF THE CORNERS SET MEET THE POSITIONAL TOLERANCE SPECIFICATIONS OF MY CONTRACT. THE INSTRUMENTS USED ON THIS SURVEY WERE: TOPCON GTS-2 & A STAFF COMPASS TO DETERMINE B.T. BEARINGS, ALSO USED WAS AN HP 3800 E.D.M. FOR MEASURING LONG RANGE CONTROL. REFERENCE FIELD BOOKS: #1 - #20.



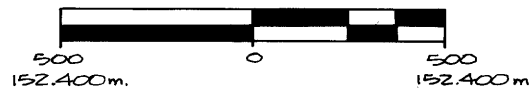
MAGNETIC DECLINATION = 21° E

### LEGEND:

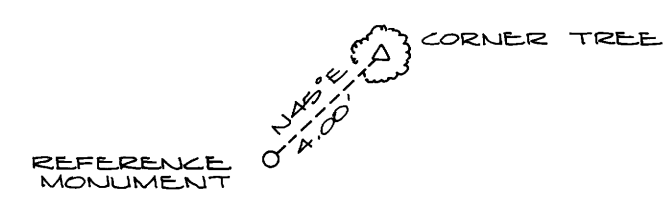
- - SET MONUMENT AS NOTED
- ⊙ - CORNER REMONUMENTED AS NOTED
- - FOUND MONUMENT AS NOTED
- △ - FOUND CORNER TREE AS NOTED

### NOTES:

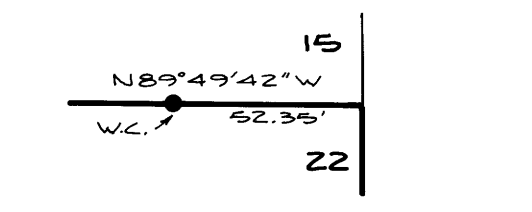
1. BASIS OF BEARINGS AND BEARING CHECKS ARE FROM SOLAR OBSERVATIONS.
2. [ ] - INDICATES DATA OF RECORD PER SURVEY BY RONALD E. STUNTZNER, R.E. 6248, IN 1977, M62-78.
3. ( ) - INDICATES DATA OF RECORD PER G.L.O. RESURVEY IN 1919, CONTRACT NO. 36.
4. ( ) - INDICATES DATA OF RECORD PER G.L.O. SURVEY IN 1879, CONTRACT NO. 342.
5. --- INDICATES LINES POSTED THIS SURVEY WITH 6 FT ORANGE FIBERGLASS POSTS.
6. --- INDICATES LINES PREVIOUSLY POSTED.



SCALE: 1" = 500'  
3,280.83 FT. = ONE METER



DETAIL A  
NOT TO SCALE



DETAIL B  
NOT TO SCALE

PREPARED BY:

AA SURVEYING SERVICE, INC., P.O. BOX 130, ROSEBURG, OR 97470

M 95-80 A