

M 95-80 A

RECORD OF SURVEY

COOKED WASSEN CADASTRAL SURVEY
FOR THE U.S.D.A. FOREST SERVICE
SIUGLAW NATIONAL FOREST
SECTIONS 15 & 22, T21S, R10W, W.M.
DOUGLAS COUNTY, OREGON
DECEMBER 1983

COUNTY SURVEYORS FILE DATA
DO NOT REMOVE FROM OFFICE

I, HERMAN A. PIESKE, REGISTERED LAND SURVEYOR IN THE STATE OF OREGON, HEREBY CERTIFY THAT THIS PLAN AND THE NOTES HEREON ARE A CORRECT REPRESENTATION OF A SURVEY I PERFORMED DURING JUNE - DECEMBER 1983, AT THE REQUEST OF THE U.S.D.A. FOREST SERVICE IN ACCORDANCE WITH THE STATUTES OF THE STATE OF OREGON AND THE ARTICLES OF MY CONTRACT.

THE STATE OF OREGON
PROFESSIONAL
LAND SURVEYOR

HERMAN A. PIESKE

OREGON
JULY 14, 1978
HERMAN A. PIESKE
1651

HERMAN A. PIESKE
P.L.S. 1651

NARRATIVE:

PURPOSE:

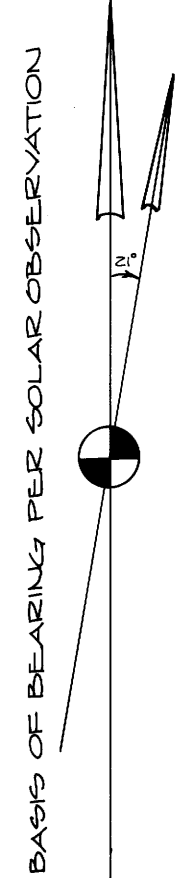
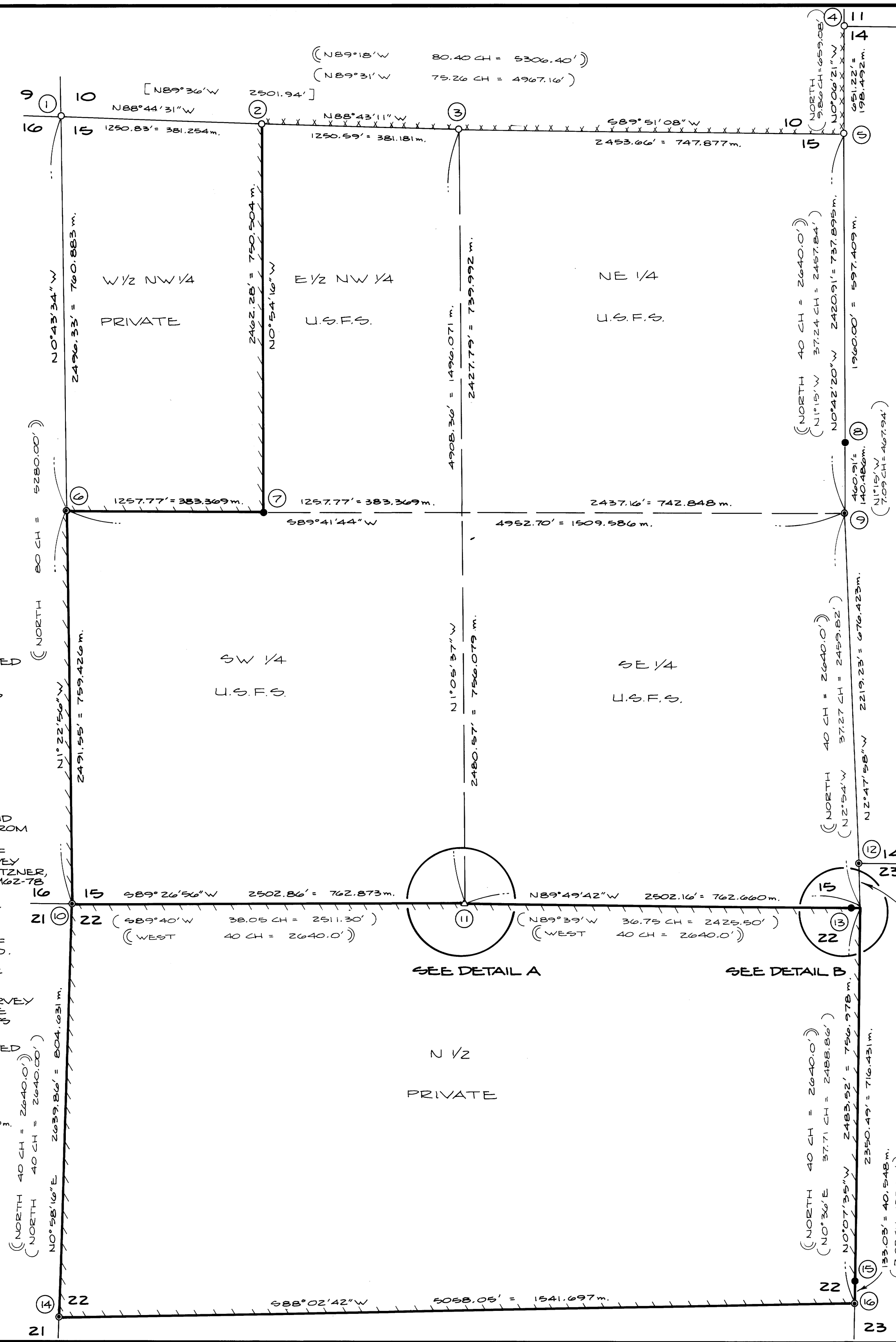
TO MONUMENT AND MARK THE BOUNDARIES BETWEEN THE U.S.D.A. FOREST SERVICE LANDS AND PRIVATE OWNERSHIP.

A HISTORY OF PRIOR SURVEYS WHICH PERTAIN TO THIS SURVEY IS AS FOLLOWS:

IN 1879, W.M. THEIL, UNDER CONTRACT NO. 342, SURVEYED SECTION 15 AND THE N 1/2 WEST LINE, NORTH & EAST LINES, E 1/2 SOUTH LINE, SECTION 22. IN 1919, FRED W. RODOLF, ELMER F. STRICKLER, GERALD A. SORRELS, FRED MENSCH AND CHARLES COLLIER, UNDER CONTRACT NO. 36, RESURVEYED THE NORTH AND EAST LINES OF SECTION 15 AND THE NORTH LINE AND THE NORTH HALF OF THE WEST AND EAST LINES OF SECTION 22. IN 1977, RONALD E. STUNTZNER, R.E. 6248, SURVEYED THE WEST 1/2 OF THE LINE BETWEEN SECTIONS 10 & 15 AND SET THE W 1/6 CORNER ON THE LINE BETWEEN SECTIONS 10 & 15, PER M62-78.

PROCEDURE:

THIS SURVEY WAS ACCOMPLISHED BY RANDOM TRAVERSE AND LONG RANGE CONTROL; WITH ALL KNOWN AND FOUND CORNERS TIED IN. ON THE EAST LINE OF SECTION 15, I FOUND AND REMONUMENTED THE 1/4 CORNER TO SECTION 15 ONLY; THE SOUTHWEST CORNER OF SECTION 14; THE 1/4 CORNER TO SECTION 22 ONLY AND THE SECTION CORNER COMMON TO SECTIONS 15, 16, 21 AND 22. AFTER A DILIGENT SEARCH I PROPORTIONED IN THE WEST 1/4 CORNER OF SEC. 14 ONLY & THE WEST 1/4 CORNER OF SEC. 23 ONLY. THE 1/4 CORNER BETWEEN SEC. 15 & 16 WAS FOUND; IT WAS SET DURING THE 1919 G.L.O. SURVEY, BUT WAS NOT RECORDED IN ANY OF THE FIELD NOTES. IT FIT THE TOPO CALLS & MID-POINT LOCATION FAIRLY WELL, SO IT WAS ACCEPTED & USED ON THIS SURVEY. NO B.T.'S WERE FOUND, LINE TREES WERE SEARCHED FOR, BUT NOT FOUND. A WITNESS CORNER WAS SET FOR THE NE CORNER OF SECTION 22, AS THE TRUE CORNER FALLS WITHIN A SLIDE AREA. THE CORNERS REMONUMENTED & PROPORTIONED WERE DONE ACCORDING TO THE 1973 BLM MANUAL OF SURVEYING INSTRUCTIONS. ALL OF THE CORNERS SET MEET THE POSITIONAL TOLERANCE SPECIFICATIONS OF MY CONTRACT. THE INSTRUMENTS USED ON THIS SURVEY WERE: TOPCON GTS-2 & A STAFF COMPASS TO DETERMINE B.T. BEARINGS, ALSO USED WAS AN HP 3800 E.D.M. FOR MEASURING LONG RANGE CONTROL. REFERENCE FIELD BOOKS: #1 - #20.



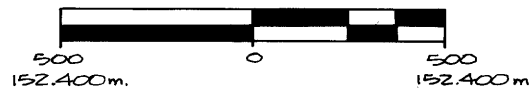
MAGNETIC DECLINATION = 21°E

LEGEND:

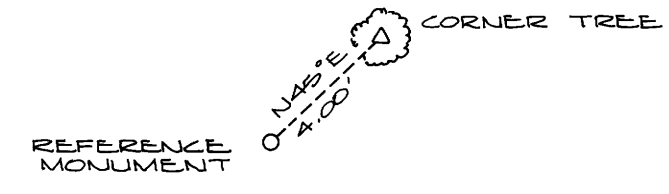
- - SET MONUMENT AS NOTED
- ⊙ - CORNER REMONUMENTED AS NOTED
- - FOUND MONUMENT AS NOTED
- △ - FOUND CORNER TREE AS NOTED

NOTES:

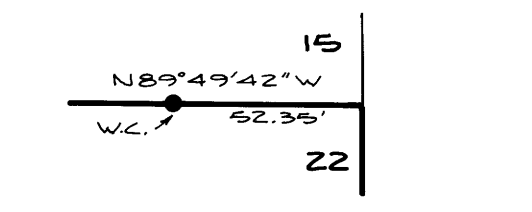
1. BASIS OF BEARINGS AND BEARING CHECKS ARE FROM SOLAR OBSERVATIONS.
2. [] - INDICATES DATA OF RECORD PER SURVEY BY RONALD E. STUNTZNER, R.E. 6248, IN 1977, M62-78.
3. () - INDICATES DATA OF RECORD PER G.L.O. RESURVEY IN 1919, CONTRACT NO. 36.
4. () - INDICATES DATA OF RECORD PER G.L.O. SURVEY IN 1879, CONTRACT NO. 342.
5. --- INDICATES LINES POSTED THIS SURVEY WITH 6 FT ORANGE FIBERGLASS POSTS.
6. --- INDICATES LINES PREVIOUSLY POSTED.



SCALE: 1" = 500'
3,280.83 FT. = ONE METER



DETAIL A
NOT TO SCALE



DETAIL B
NOT TO SCALE

PREPARED BY:

AA SURVEYING SERVICE, INC., P.O. BOX 130, ROSEBURG, OR 97470

M 95-80 A

**COUNTY SURVEYORS FILE DATA
DO NOT REMOVE FROM OFFICE**

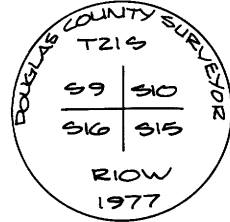
RECORD OF SURVEY
COOKED WASSEN CADASTRAL SURVEY
FOR THE U.S.D.A. FOREST SERVICE
SIUSLAW NATIONAL FOREST
SECTIONS 15 & 22, T21S, R10W, W.M.
DOUGLAS COUNTY, OREGON
DECEMBER 1983

88
 COUNTY SURVEYORS FILE DATA
 DO NOT REMOVE FROM OFFICE

M 95-80 B

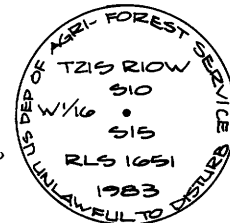
1 SECTION CORNER 9-10-15-16

FOUND 1" IRON PIPE WITH 2 1/4" BRASS CAP, MKD AS SHOWN, TOP RIGHT.
 FOUND 2" (D.B.) IRON PIPE WITH 2 1/2" BRASS CAP BEARS SOUTH 0.18 FT. AND 0.2 FT. LOWER FROM 1" IRON PIPE, MKD AS SHOWN, BOTTOM RIGHT.
 B.T.'S FOUND:
 36" HEMLOCK BEARS N21°W 23.6 FT., GOOD SCAR
 38" HEMLOCK BEARS S75°E 12.6 FT., GOOD SCAR
 14" HEMLOCK BEARS S17°W 19.1 FT., VISIBLE SCRIBES "TZ1S R10W S16 CS, BT"



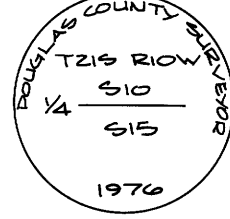
2 W 1/6 CORNER SECTIONS 10-15

FOUND 2 1/2" ALUM. PIPE, 4" ABOVE GROUND, WITH 3/4" ALUM. CAP MKD AS SHOWN.
 B.T.'S FOUND:
 21" D FIR BEARS N21°W 42.7 FT., CUT APPROX. 6 FT. HIGH, GOOD SCAR
 24" CEDAR BEARS S13°E 61.6 FT., BLAZED AND SCRIBED "W 1/6 S15 BT"
 38" D FIR BEARS S18°W 114.2 FT., BLAZED AND SCRIBED "W 1/6 S15 BT"



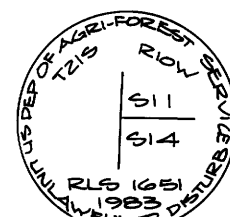
3 1/4 CORNER SECTIONS 10-15

FOUND 2" PIPE WITH 3/4" BRASS CAP, SLIGHTLY BENT DUE TO LOGGING DEBRIS BUT STILL SECURE, MKD AS SHOWN.
 B.T.'S FOUND:
 50" D FIR BEARS S38°W 6.8 FT., HEALED FACE
 14" HEMLOCK BEARS N48°E 11.4 FT., OPEN FACE, SCRIBES UNREADABLE



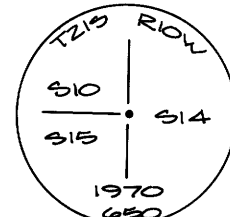
4 SECTION CORNER 11-14

FOUND 2 1/2" ALUM. PIPE, 10" ABOVE GROUND, WITH STONE MOUND, WITH 3/4" ALUM. CAP MKD AS SHOWN.
 B.T.'S FOUND:
 16" CEDAR BEARS S22°E 16.3 FT., FACED AND SCRIBED "TZ1S R10W S14 BT"
 30" HEMLOCK BEARS N12°40'E 179.0 FT., FACED AND SCRIBED "TZ1S R10W S11 BT"



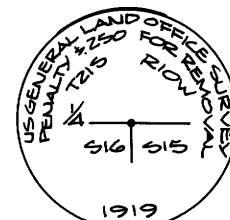
5 SECTION CORNER 10-15

FOUND 1" IRON PIPE WITH 2 1/2" BRASS CAP, 14" ABOVE GROUND, MKD AS SHOWN.
 B.T.'S FOUND:
 25" CEDAR BEARS N24°W 20.8 FT., OPEN FACE
 20" MAPLE BEARS S40°W 40.7 FT., GOOD SCAR (REC. S25°W)



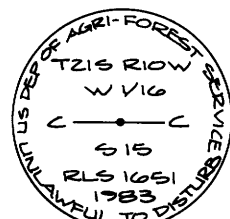
6 1/4 CORNER SECTIONS 15-16

FOUND BADLY RUSTED 1" IRON PIPE FILLED WITH CONCRETE MKD AS SHOWN, TOP RIGHT.
 CORNER REPLACED WITH 2 1/2" x 30" ALUM. PIPE, 24" IN THE GROUND, WITH 3" ALUM. CAP MKD AS SHOWN, BOTTOM RIGHT. BURIED G.L.O. MONUMENT NORTH OF NEW PIPE.
 B.T.'S SET:
 17" CEDAR BEARS S50°W 34.6 FT., FACED AND SCRIBED "1/4 S16 BT"
 30" CEDAR BEARS S80°E 37 FT., FACED AND SCRIBED "1/4 S15 BT"



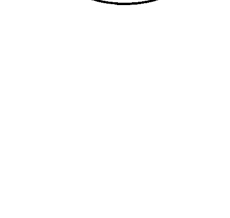
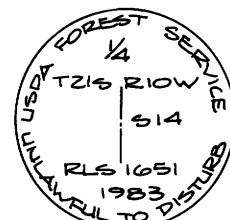
7 CW 1/6 CORNER SECTION 15

SET 2 1/2" x 30" ALUM. PIPE, 24" IN THE GROUND, WITH 3/4" ALUM. CAP MKD AS SHOWN.
 B.T.'S SET:
 8" CASCARA BEARS S65°E 28.1 FT., BARK SCRIBED "CW 1/6 S15 BT"
 42" HEMLOCK BEARS S1°E 80.2 FT., FACED AND SCRIBED "CW 1/6 S15 BT"



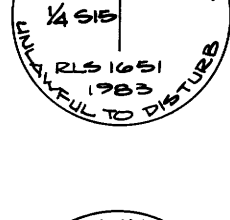
8 W 1/4 CORNER SECTION 14

SET 2 1/2" x 30" ALUM. PIPE, 28" IN THE GROUND, WITH 3/4" ALUM. CAP MKD AS SHOWN, WITH SMALL ROCK MOUND.
 B.T.'S SET:
 36" CEDAR BEARS N35°E 103.4 FT., SCRIBED "1/4 S14 BT"
 27" ALDER BEARS S12°E 44.4 FT., BARK SCRIBED "1/4 S14 BT"



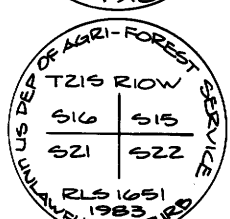
9 E 1/4 CORNER SECTION 15

FOUND BADLY RUSTED IRON PIPE FILLED WITH CONCRETE (1"). NO CAP FOUND.
 B.T.'S FOUND:
 20" D FIR BEARS S25°W 14.9 FT., HEALED FACE
 30" D FIR (UPROOTED AND SLID DOWNHILL) BEARS S74°W 15.0 FT. (TO ROOT WAD)
 SET 2 1/2" x 30" ALUM. PIPE, 10" ABOVE GROUND, WITH 3/4" ALUM. CAP MKD AS SHOWN.
 B.T. SET:
 28" D FIR BEARS N28°W 37.0 FT., SCRIBED "1/4 S15 BT" ON DOUBLE BLAZE



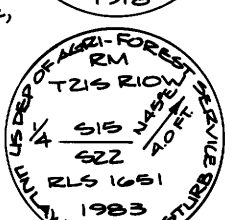
10 SECTION CORNER 15-16-21-22

FOUND BADLY RUSTED PIPE WITH 2 1/2" BRASS CAP MKD AS SHOWN, TOP RIGHT.
 B.T.'S FOUND:
 15" ALDER (GROWING OUT OF OLD STUMP) BEARS N50°W 57.6 FT., POSSIBLE ORIGINAL B.T.
 58" HEMLOCK BEARS N73°E 23.3 FT., VISIBLE SCAR AND SOME AXE MARKS
 SET 2 1/2" x 30" ALUM. PIPE, 24" IN THE GROUND, WITH 3/4" ALUM. CAP MKD AS SHOWN, BOTTOM RIGHT.
 B.T.'S SET:
 33" ALDER BEARS S53°W 95.2 FT., BARK SCRIBED "TZ1S R10W S21 BT"
 52" CEDAR BEARS S12°E 56.0 FT., FACED AND SCRIBED "TZ1S R10W S22 BT"



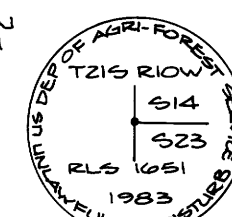
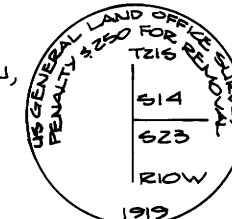
11 1/4 CORNER SECTIONS 15-22

FOUND 24" ORIGINAL CORNER TREE. FOUND 1" IRON PIPE WITH 2 1/2" BRASS CAP, ON SW. SIDE OF TREE, MKD AS SHOWN, TOP RIGHT.
 B.T.'S SET:
 16" D FIR, PARTIALLY KNOCKED OVER, BEARS S50°E 15.8 FT., HEALED SCAR
 SET 2 1/2" x 30" ALUM. PIPE AS REFERENCE MONUMENT, 24" IN THE GROUND, BEARS S45°W 4.0 FT. FROM CORNER TREE, WITH 3/4" BRASS CAP MKD AS SHOWN, BOTTOM RIGHT.
 B.T.'S SET:
 12" ALDER BEARS N62°E 57.0 FT., BARK SCRIBED "1/4 S15 BT"
 14" HEMLOCK BEARS S17°W 24.1 FT., BLAZED AND SCRIBED "1/4 S22 BT"



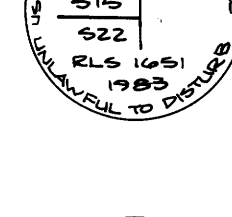
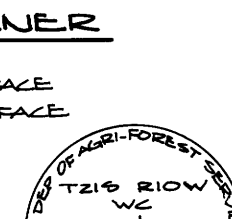
12 SECTION CORNER 14-23

FOUND 2" RUSTED PIPE AND CONCRETE STEM WITH G.L.O. BRASS CAP, BROKEN OFF ALONGSIDE PIPE, MKD AS SHOWN, TOP RIGHT.
 B.T.'S FOUND:
 14" HEMLOCK BEARS N57°E 8.7 FT., HEALED FACE
 34" D FIR BEARS S33°E 10.8 FT., HEALED FACE
 AT LOCATION OF G.L.O. PIPE, SET 2 1/2" x 30" ALUM. PIPE, 24" IN THE GROUND, WITH 3/4" ALUM. CAP MKD AS SHOWN, BOTTOM RIGHT.



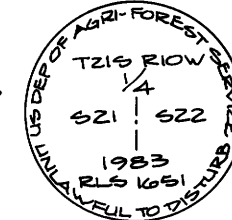
13 SECTION CORNER 15-22 WITNESS CORNER

B.T.'S FOUND:
 60" CEDAR BEARS N44°E 38.9 FT. TO FACE, HEALED FACE
 60" CEDAR BEARS N56°W 33.0 FT. TO FACE, HEALED FACE
 CORNER POSITION MARKS IN A RECENT ACTIVE SLIDE AREA. SET WITNESS CORNER S2.35 FT. WEST OF CORNER ON LINE. SET 2 1/2" x 30" ALUM. PIPE, 24" IN THE GROUND, WITH 3/4" ALUM. CAP MKD AS SHOWN.
 B.T.'S SET:
 18" HEMLOCK BEARS N50°W 27.6 FT., SCRIBED "WC TZ1S R10W S15 BT"
 24" HEMLOCK BEARS S32°E 41.0 FT., FACED AND SCRIBED "WC TZ1S R10W S22 BT"



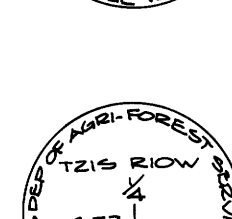
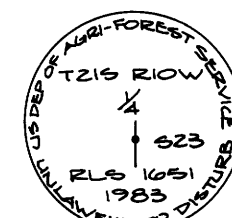
14 1/4 CORNER SECTIONS 21-22

B.T.'S FOUND:
 24" BIG LEAF MAPLE BEARS N45°W 26.4 FT., HEALED FACE
 30" FIR (BLOWN DOWN), HEALED FACE. ROOT HOLE BEARS N14°E 26.4 FT.
 SET 2 1/2" x 30" ALUM. PIPE, 24" IN THE GROUND, WITH 3/4" ALUM. CAP MKD AS SHOWN.
 B.T. SET:
 14" HEMLOCK BEARS N40°E 47.6 FT., FACED AND SCRIBED "1/4 S22 BT"



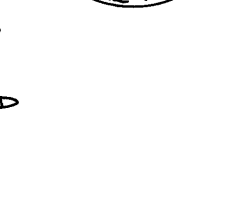
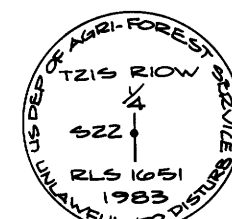
15 W 1/4 CORNER SECTION 23

SET 2 1/2" x 30" ALUM. PIPE, 27" IN THE GROUND, WITH 3" ALUM. CAP, MKD AS SHOWN.
 B.T.'S SET:
 24" HEMLOCK BEARS S52°E 6.1 FT., FACED AND SCRIBED "1/4 S23 BT"
 42" HEMLOCK BEARS N14°E 20.5 FT., FACED AND SCRIBED "1/4 S23 BT"



16 E 1/4 CORNER SECTION 22

FOUND 2" PIPE FILLED WITH CONCRETE BADLY RUSTED. BRASS CAP BROKEN OFF AND GONE.
 B.T.'S FOUND:
 64" D FIR BEARS S76°E 40.9 FT., HEALED FACE
 10" CHITTAM WOOD, BLOWN DOWN, BEARS S87°E 5.0 FT. ±, ROTTED FACE
 AT LOCATION OF BROKEN PIPE, SET 2 1/2" x 30" ALUM. PIPE, 26" IN THE GROUND, WITH 3" ALUM. CAP MKD AS SHOWN.
 B.T. SET:
 10" HEMLOCK BEARS S40°W 23.8 FT., FACED AND SCRIBED "1/4 S22 BT"



NOTE: EACH NEW BEARING TREE HAS A BRASS WASHER MKD. "RLS 1651" NAILED TO LOWER BLAZE.
 ALL B.T.'S HAVE A RED BAND PAINTED AROUND TREES, A B.T. TAG NAILED TO THE FRONT OF THE TREES, AND AN ATTENTION SIGN OR LAND SURVEY SIGN NAILED TO THE BACK OF THE TREE.

REGISTERED
 PROFESSIONAL
 LAND SURVEYOR

Herman A. Pieske

OREGON
 JULY 14, 1978
 HERMAN A. PIESKE
 1651

M 95-80 B