

COUNTY SURVEYORS FILE DATA
DO NOT REMOVE FROM OFFICE

RECORD OF SURVEY

COOKED WASSEN CADASTRAL SURVEY
FOR THE U.S.D.A. FOREST SERVICE
SILKSLAW NATIONAL FOREST

SECTION 10, T21S, R10W, W.M.
DOUGLAS COUNTY, OREGON
DECEMBER 1983

I, HERMAN A. PIESKE, REGISTERED LAND SURVEYOR IN THE STATE OF OREGON, HEREBY CERTIFY THAT THIS PLAT AND THE NOTES HEREON ARE A CORRECT REPRESENTATION OF A SURVEY I PERFORMED DURING JUNE - DECEMBER, 1983, AT THE REQUEST OF THE U.S.D.A. FOREST SERVICE IN ACCORDANCE WITH THE STATUTES OF THE STATE OF OREGON AND THE ARTICLES OF MY CONTRACT.

Herman A. Pieske
HERMAN A. PIESKE
P.L.S. 1651

REGISTERED
PROFESSIONAL
LAND SURVEYOR

Herman A. Pieske

OREGON
JULY 14, 1978
HERMAN A. PIESKE
1651

NARRATIVE

PURPOSE:

TO MONUMENT AND MARK THE BOUNDARIES BETWEEN THE U.S.D.A. FOREST SERVICE LANDS AND PRIVATE OWNERSHIP.

A HISTORY OF PRIOR SURVEYS WHICH PERTAIN TO THIS SURVEY IS AS FOLLOWS:

IN 1874, W.H. BYARS, UNDER CONTRACT NO. 202, SURVEYED THE 1/2 OF THE WEST BOUNDARY OF SEC. 10.

IN 1879, W.M. THEIL, UNDER CONTRACT NO. 342, SURVEYED THE SOUTH LINE OF SEC. 10.

IN 1919, FRED W. RODOLPH, ELMER F. STRICKLER AND GERALD A. SORRELS, UNDER CONTRACT NO. 36, RESURVEYED THE SOUTH & WEST LINES OF SEC. 10, ALSO THEY SURVEYED AND SUBDIVIDED THE REST OF SECTION 10.

IN 1977, RONALD E. STUNTZNER, R.E. 6245, SURVEYED AND SUBDIVIDED SECTION 10, C.S. M62-78 & SET THE NW 1/4 & SW 1/4 COR. ON THE WEST LINE & W 1/2 COR. ON THE SOUTH LINE & SW CORNER.

IN 1983, RICHARD J. HINTZ, L.S. 497, SURVEYED THE WEST BOUNDARY OF SEC. 10, CONTRACT NO. 53-0410-3-0786N, C.S. M95-4. DOUGLAS COUNTY REMONUMENTED E 1/4, SW COR., S 1/4, NW COR., N 1/4, W 1/4 OF SEC. 10; ALSO THE W 1/4 SEC. 11.

PROCEDURE:

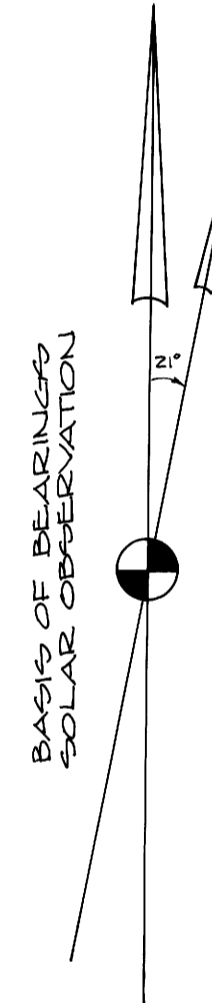
THIS SURVEY WAS ACCOMPLISHED BY RANDOM TRAVERSE AND LONG RANGE CONTROL AND ALL KNOWN AND FOUND CORNERS WERE TIED IN.

ON THE EAST LINE OF SECTION 10, I FOUND AND REMONUMENTED THE 1/4 CORNER TO SECTION 11 ONLY; I, ALSO, AFTER A DILIGENT SEARCH WAS MADE, PROPORTIONED IN THE SOUTHWEST CORNER OF SECTION 11. THE 1/4 AND THE W 1/2 CORNER ON THE SOUTH LINE WERE ALSO REMONUMENTED. NO LINE TREES WERE FOUND.

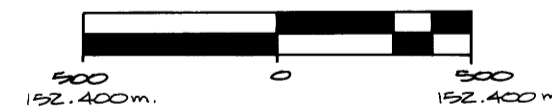
THE CORNERS REMONUMENTED AND PROPORTIONED WERE DONE ACCORDING TO THE 1973 BLM MANUAL OF INSTRUCTIONS. ALL OF THE CORNERS SET MEET THE POSITIONAL TOLERANCE SPECIFICATIONS OF MY CONTRACT.

THE INSTRUMENTS USED ON THIS SURVEY WERE: TOPCON GTS-2 AND A STAFF COMPASS TO DETERMINE B.T. BEARINGS, ALSO USED WAS AN HP 3800 E.D.M. FOR MEASURING LONG RANGE DISTANCES.

REFERENCE FIELD BOOKS: #1 - #20



MAGNETIC DECLINATION = 21°E.



SCALE: 1" = 500'

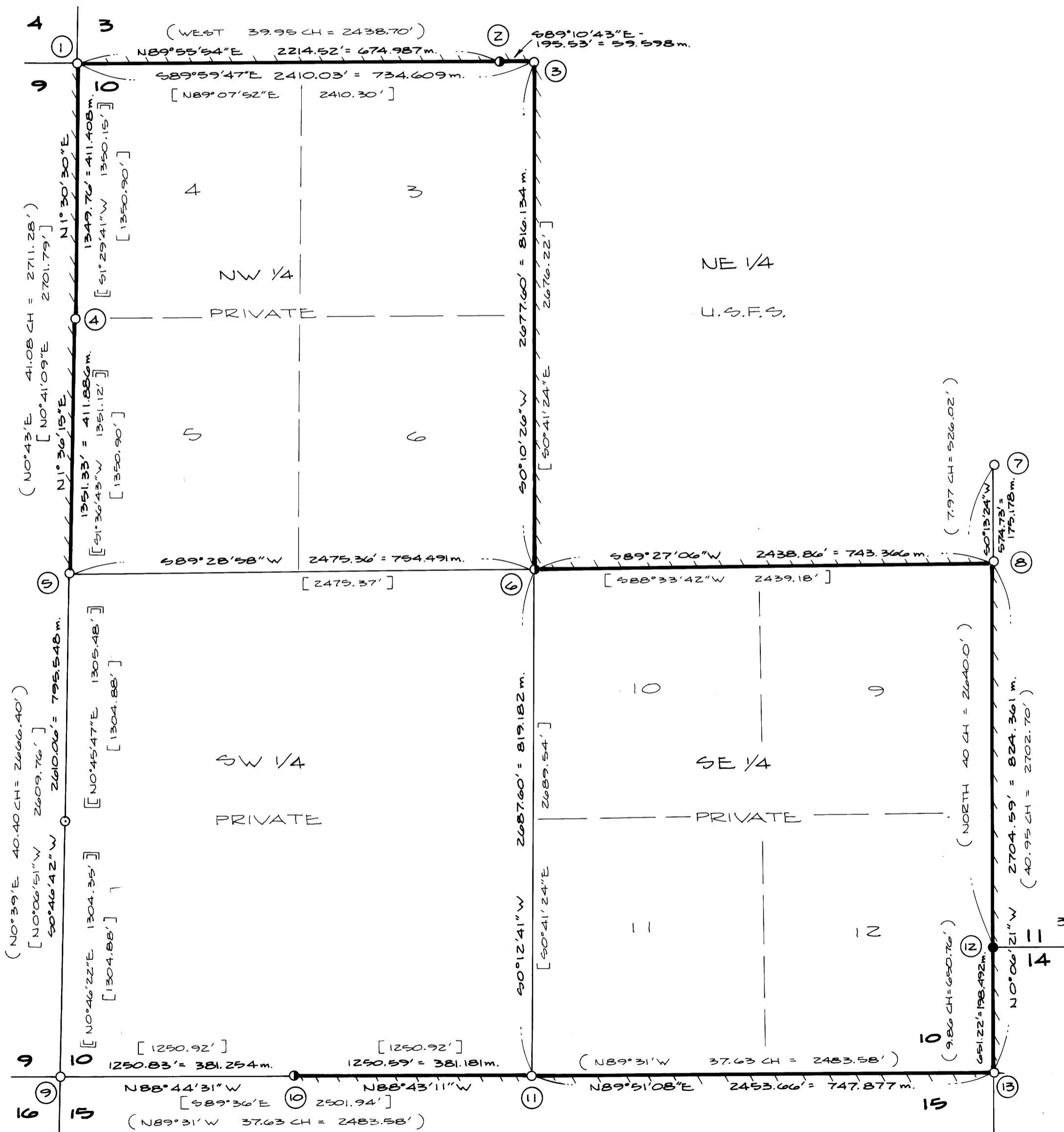
328083 FEET = ONE METER

LEGEND:

- - SET MONUMENT AS NOTED
- - FOUND MONUMENT AS NOTED
- ⊙ - FOUND AND REMONUMENTED AS NOTED
- - CORNER NOT TIED TO THIS SURVEY
- |||| - LINE POSTED THIS SURVEY

NOTES:

1. BASIS OF BEARINGS & BEARINGS CHECKS ARE FROM SOLAR OBSERVATIONS.
2. () INDICATES DATA OF RECORD, BLM RESURVEY, 1919.
3. [] INDICATES DATA OF RECORD PER SURVEY BY RONALD E. STUNTZNER, R.E. 6245.
4. [] INDICATES DATA OF RECORD PER C.S. M95-4, SURVEY FILED BY RICHARD J. HINTZ, L.S. 497.



PREPARED BY:

AA SURVEYING SERVICE, INC., P.O. BOX 130, ROSEBURG, OREGON 97470

PAGE 1 OF 2

CONTRACT NO. 53-0410-3-0870N

M 95-79 A