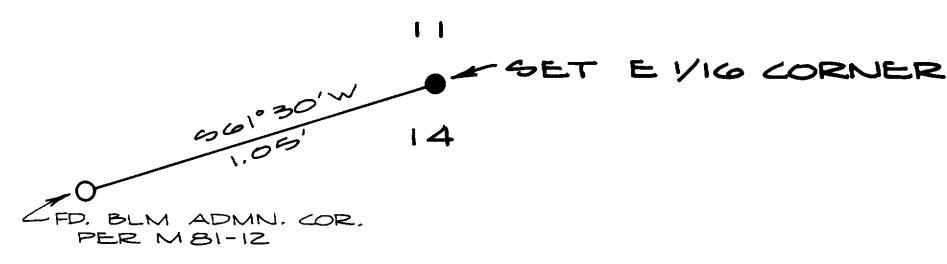


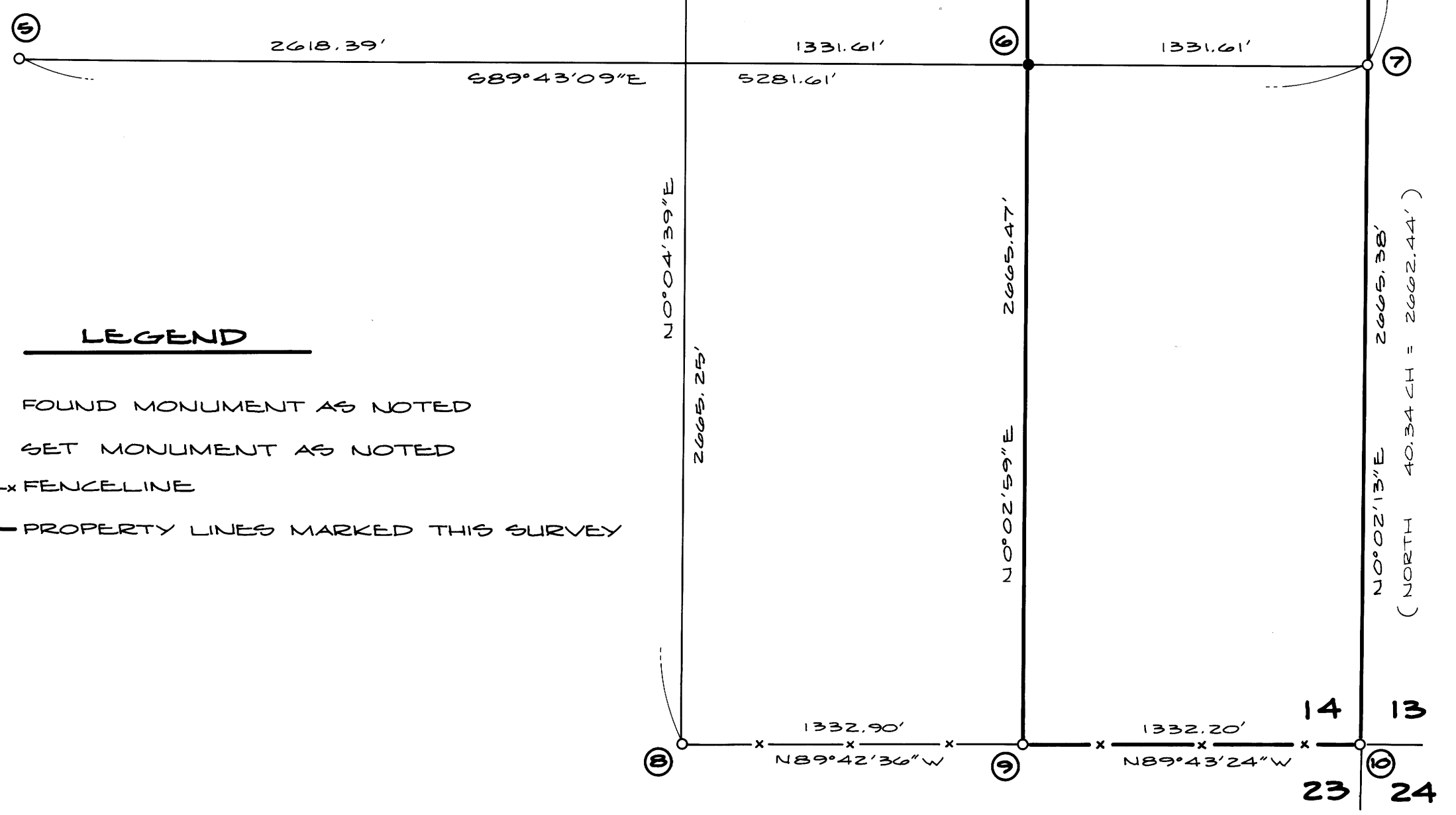
**SURVEY TO MARK PROPERTY LINES**  
 FOR CAPITAL VENEER  
 IN SECTION 14, T29S, R9W, W.M.  
 SCALE: 1" = 500'      JANUARY 1984

COUNTY SURVEYORS FILE DATA  
 DO NOT REMOVE FROM OFFICE

M 95-75A



**DETAIL A**  
 NOT TO SCALE



**LEGEND**

- — FOUND MONUMENT AS NOTED
- — SET MONUMENT AS NOTED
- x—x FENCELINE
- PROPERTY LINES MARKED THIS SURVEY

**NARRATIVE**

**PURPOSE:**  
 TO SURVEY AND MARK THE BOUNDARY LINES OF THE E 1/2 E 1/2 OF SECTION 14.

**PROCEDURE:**  
 I FOUND AND TIED INTO OUR CLOSED LOOP TRAVERSE THE FOLLOWING CORNERS ALONG THE PERIMETER OF SECTION 14: THE N 1/4, NE COR., E 1/4, SE COR., S 1/4, W 1/4 AND E 1/6 COR. ON THE SOUTH LINE. I FOUND THE E 1/6 COR. ON THE NORTH LINE SET BY A BLM ADMINISTRATIVE SURVEY, FILED AS M81-12. I DID NOT ACCEPT THIS CORNER AS IT WAS SLIGHTLY OFF FOR LINE AND DISTANCE. I SET THE E 1/6 COR. ON THE NORTH LINE AND THE SE 1/6 COR. OF THE SECTION. BASE OF BEARINGS PER GLO PLAT-1966.

**EQUIPMENT USED ON THIS SURVEY:**  
 TOPCON GTS-1, TOPCON GTS-2, LEITZ ZOC AND TOPCON EDM DCM-2.

REGISTERED  
 PROFESSIONAL  
 LAND SURVEYOR  
*Eugene A. Bloom*  
 OREGON  
 MAY 13, 1960  
 EUGENE A. BLOOM  
 492

1795-5611

SURVEY TO MARK PROPERTY LINES

COUNTY SURVEYORS FILE DATA  
DO NOT REMOVE FROM OFFICE

FOR CAPITAL VENEER

IN SECTION 14, T29S, R9W, W.M.

JANUARY 1984

FILED ✓  
RECORDED 18  
JAN 18 1984  
COUNTY SURVEYORS  
DOUGLAS COUNTY, OREGON  
✓

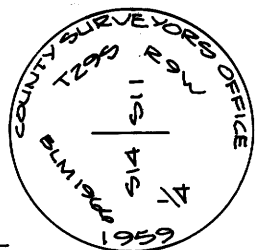
M 95-75B

① N 1/4 CORNER SECTION 14

FOUND 1/2" IRON PIPE (LOOSE), 14" ABOVE GROUND, WITH 2 1/2" BRASS CAP MKD. AS SHOWN.

B.T.'S FOUND:

- 9" HEMLOCK (ROTTED STUMP) BEARS N49°W 3.0 FT, VIS. SCRIBE "BT"
- 17" FIR BEARS SOUTH 35.0 FT, HEALED BLAZE
- 44" FIR BEARS NORTH 42.5 FT, BARK SCRIBES NOT LEGIBLE, HEALED BLAZE AT BASE
- 29" FIR BEARS S18°W 26.4 FT, HEALED BLAZE

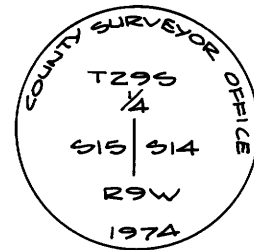


⑤ W 1/4 CORNER SECTION 14

FOUND 1" IRON PIPE FIRMLY SET, 6" BELOW GROUND, WITH 2 1/2" BRASS CAP MKD. AS SHOWN.

B.T.'S FOUND:

- 26" D FIR BEARS N63°W 44.3 FT, HAS BEEN OPENED, SCRIBES VISIBLE BUT CHARRED AND NOT LEGIBLE
- 24" FIR SNAG BEARS S3°E 30.6 FT, HEALED DOUBLE BLAZE
- 12" FIR SNAG BEARS S18°W 46.4 FT, HEALED DOUBLE BLAZE

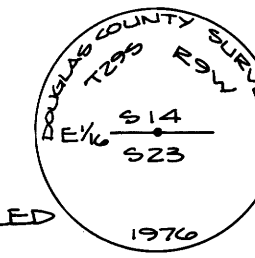


⑨ E 1/4 CORNER SECTIONS 14-23

FOUND 1" IRON PIPE WITH 2" BRASS CAP MKD. AS SHOWN.

B.T.'S FOUND:

- 15" FIR SNAG BEARS N60°E 27.2 FT, VISIBLE SCRIBES
- 14" FIR SNAG BEARS S18°W 23.8 FT, HEALED FACE (TAG READS S11 1/2°W)



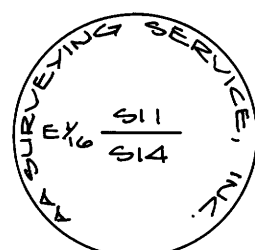
② E 1/16 CORNER SECTIONS 11-14

SET 5/8" x 30" IRON ROD WITH 2" ALUM. CAP MKD. AS SHOWN, FROM WHICH

FOUND 1" IRON PIPE BEARS S61 1/2°W 1.05 FT., FROM WHICH

B.T.'S FOUND:

- 8" D FIR BEARS N36°E 6.6 FT, HEALED FACE
- 5" D FIR BEARS S42°E 7.5 FT, HEALED FACE



⑥ CE 1/16 CORNER SECTION 14

SET 5/8" x 30" IRON ROD WITH 2" ALUM. CAP MKD. AS SHOWN.

B.T.'S FOUND:

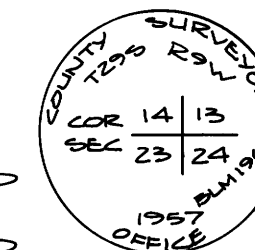
- 9" D FIR BEARS S46°W 10.8 FT, FACED AND SCRIBED "CE 1/16 S14 BT"
- 14" ALDER BEARS N60°W 7.4 FT, BARK SCRIBED "CE 1/16 S14 BT"



⑩ SECTION CORNER 13-14-23-24

FOUND 1" IRON PIPE WITH 2" BRASS CAP MKD. AS SHOWN, FROM WHICH:

- FOUND 3/4" IRON PIPE BEARS S60°E 0.26 FT.
- 24" W. FIR BEARS S58°E 26.7 FT, HEALED FACE
- 24" W. FIR BEARS S70°W 22.8 FT, HEALED FACE
- 23" CEDAR BEARS N9°E 57.4 FT, HEALED FACE
- 18" W. FIR BEARS N56°W 62.7 FT, HEALED FACE

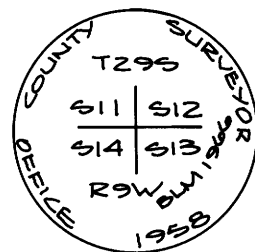


③ SECTION CORNER 11-12-13-14

FOUND 1/2" IRON PIPE FIRMLY SET, 16" ABOVE GROUND, WITH 2 1/2" BRASS CAP MKD. AS SHOWN.

B.T.'S FOUND:

- 16" W. FIR BEARS N46°E 3.5 FT, PARTIALLY VISIBLE SCRIBES NOT LEGIBLE ON PARTLY HEALED FACE
- 17" W. FIR (STUMP) BEARS S65°E 56.0 FT, HEALED FACE
- 28" W. FIR BEARS S31°W 132.9 FT, HEALED DOUBLE BLAZE
- 40" D FIR SNAG BEARS N32°W 37.3 FT, VISIBLE BARK SCRIBES "T29S R9W S11 BT"

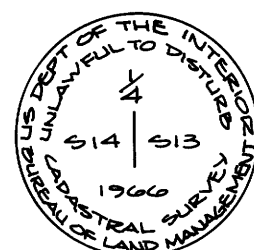


⑦ E 1/4 CORNER SECTION 14

FOUND 2 1/2" IRON PIPE FIRMLY SET, 4" ABOVE GROUND, WITH 3" BRASS CAP MKD. AS SHOWN.

B.T.'S FOUND:

- 14" D FIR (NOW 6" HIGH STUMP) BEARS S76°W 6.7 FT, HEALED FACE
- 20" D FIR BEARS N7°E 39.7 FT, HEALED FACE

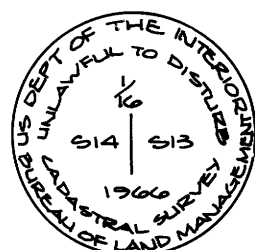


④ N 1/16 CORNER SECTIONS 13-14

FD 2 1/2" IRON PIPE, 4" ABOVE GROUND, WITH 3" BRASS CAP MKD. AS SHOWN.

B.T.'S FOUND:

- 9" OAK BEARS N65°E 43.4 FT, HEALED BLAZE
- 12" W. FIR BEARS N50°W 27.8 FT, HEALED BLAZE

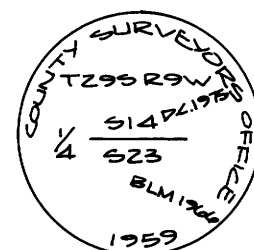


⑧ S 1/4 CORNER SECTION 14

FOUND 2" IRON PIPE FIRMLY SET, 2" ABOVE GROUND, WITH 3" BRASS CAP MKD. AS SHOWN.

B.T.'S FOUND:

- 14" FIR SNAG BEARS S8°W 114.3 FT, HEALED FACE
- 20" FIR BEARS N 27°E 48.0 FT, HEALED FACE



REGISTERED PROFESSIONAL LAND SURVEYOR

Eugene A. Bloom

OREGON - MAY 13, 1969  
EUGENE A. BLOOM  
492

MAP PREPARED BY:

AA SURVEYING SERVICE, INC. - P.O. BOX 130 - ROSEBURG, OREGON 97470

M 95-75B