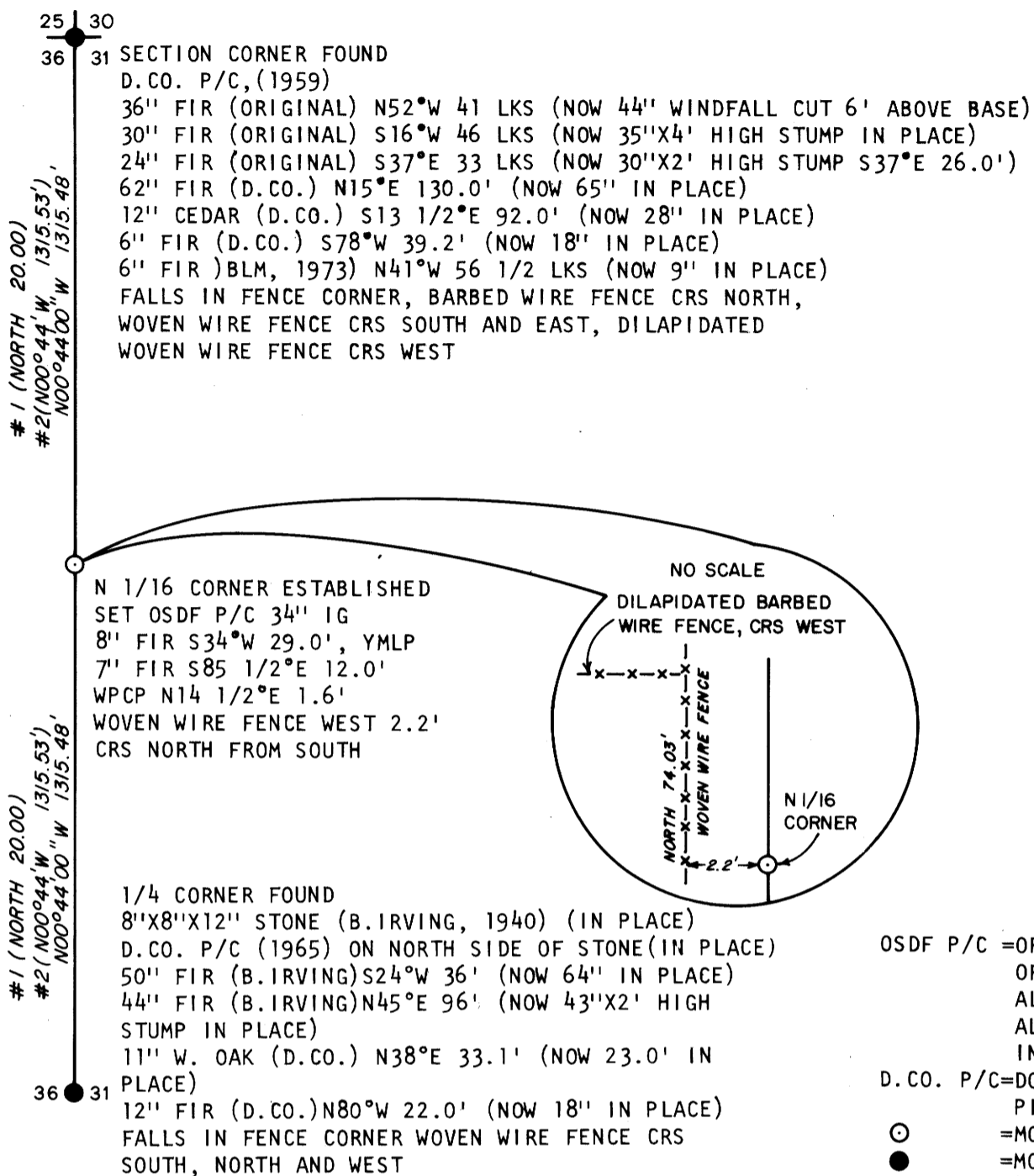


COUNTY SURVEYORS FILE DATA DO NOT REMOVE FROM OFFICE

FILED *7*
RECEIVED *al*

JAN 18 1984

COUNTY SURVEYOR
DOUGLAS COUNTY, ORE.



LEGEND

- OSDF P/C = OREGON STATE DEPARTMENT OF FORESTRY 1 1/2"X36" ALUMINUM PIPE WITH 3 3/4" ALUMINUM CAP WITH MAGNETIC INSERT
- D.CO. P/C = DOUGLAS COUNTY 1" IRON PIPE WITH 2 1/2" BRASS CAP
- = MONUMENT SET
- = MONUMENT FOUND
- WPCP = 4"X4"X72" WHITE PAINTED CEDAR POST
- YMLP = YELLOW METAL LOCATION POSTER
- IG = IN GROUND
- CRS = COURSE
- #1 () = RECORD BEARINGS AND DISTANCES IN CHAINS (HARVEY GORDON, 1855, CONTRACT NO. 52)
- #2 () = RECORD BEARINGS AND DISTANCES (W.HAINES, 1980)

SURVEY NARRATIVE TO COMPLY WITH PARAGRAPH 209.250
OREGON REVISED STATUTES

PURPOSE

TO ESTABLISH THE NORTH ONE SIXTEENTH CORNER COMMON TO SECTIONS 31 AND 36, TOWNSHIP 22 SOUTH, RANGE 4 AND 5 WEST, WILLAMETTE MERIDIAN.

BASIS OF BEARING

BEARINGS BASED ON THE 1980 W.HAINES SURVEY OF THE SECTION LINE BETWEEN THE ONE QUARTER CORNER COMMON TO SECTION 31 AND 36 AND THE SECTION CORNER COMMON TO SECTIONS 25, 30, 31 AND 36, TOWNSHIP 22 SOUTH, RANGE 4 AND 5 WEST, WILLAMETTE MERIDIAN.

PROCEDURE

A RANDOM TRAVERSE WAS RAN BETWEEN THE SECTION CORNER COMMON TO SECTIONS 25, 30, 31 AND 36 AND THE ONE QUARTER CORNER COMMON TO SECTIONS 31 AND 36, TOWNSHIP 22 SOUTH, RANGE 4 AND 5 WEST, WILLAMETTE MERIDIAN. THIS SECTION LINE WAS SURVEYED USING THE PROCEDURES AS OUTLINED IN THE "MANUAL OF INSTRUCTIONS FOR THE SURVEY OF THE PUBLIC LANDS OF THE U.S." BEARINGS TO ACCESSORIES FOR THE ESTABLISHED CORNER WAS TAKEN WITH A STAFF COMPASS SET AT 20°30' EAST MAGNETIC DECLINATION. NEW CORNER AND ACCESSORIES MARKED ACCORDING TO "MANUAL OF INSTRUCTIONS FOR THE SURVEY OF THE PUBLIC LANDS OF THE U.S." DISTANCE MEASURED TO BEARING TREE FACE. FOR DETAILED REPORT ON FOUND CORNERS SEE COUNTY RECORDS.

SURVEY FOR:
STATE OF OREGON - DEPARTMENT OF FORESTRY
SECTION LINE 31 & 36, T.22S., R.4 & 5W., W.M.

DOUGLAS COUNTY, OREGON
THEODOLITE AND E.D.M. SURVEY BY: LLOYD D. SMITH
J.MC INTOSH, A.KOREIVA, M.VONLAUE & B.PETERSON
DRAWN BY: A. KOREIVA
DECEMBER 14, 1983
SCALE 1"=400'

SURVEYED BY:

**REGISTERED
PROFESSIONAL
LAND SURVEYOR**

Lloyd D. Smith

**OREGON
JULY 22, 1977
LLOYD D. SMITH
1101**

LLOYD D. SMITH
300 5TH ST., BAY PARK
COOS BAY, OREGON

C-117
OSDF 1/4/84