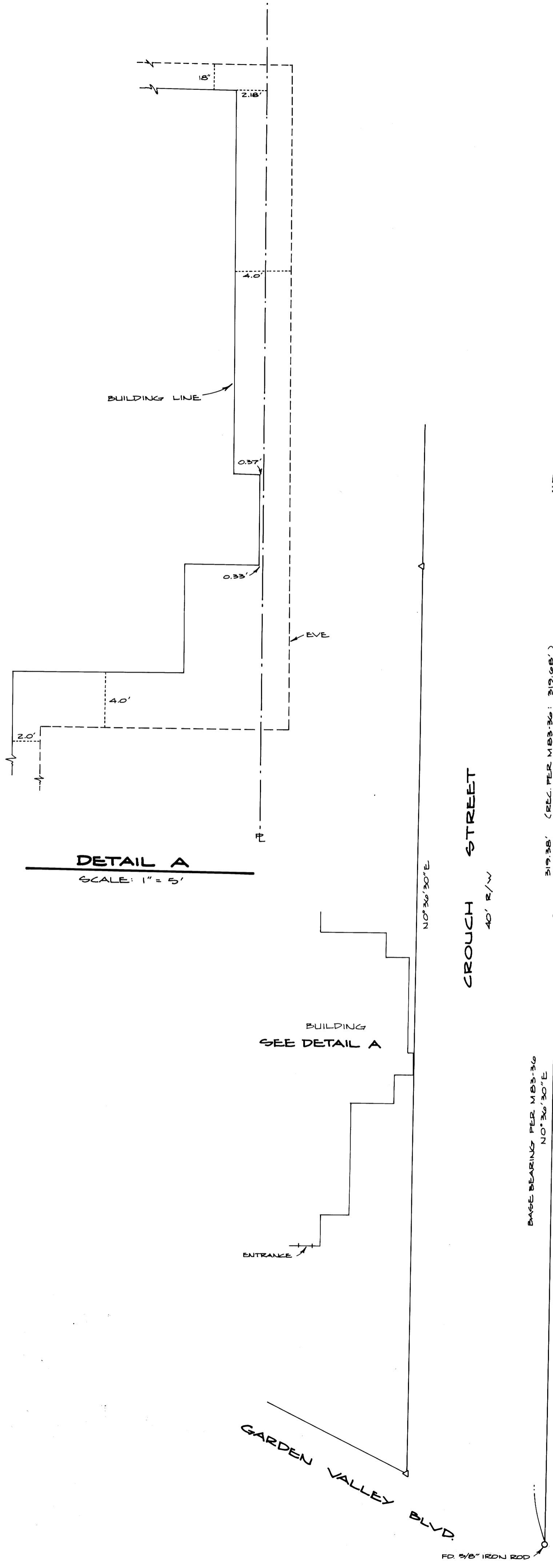


COUNTY SURVEYORS FILE DATA  
DO NOT REMOVE FROM OFFICE

FILED *bs*  
RECEIVED *bs*  
JAN 4 1984  
COUNTY SURVEYOR  
DOUGLAS COUNTY, ORE.  
*bs*



**SURVEY IN S.E. 1/4, SECTION 11,  
T27S, R6W, W.M.**

SURVEY FOR: RICK KITSON  
SURVEY BY: DONALD A. BENTZ, L.S.  
P.O. BOX 301  
WINCHESTER, OREGON

SCALE: 1" = 20'      NOVEMBER 1983

- LEGEND:**
- - FOUND MONUMENT AS NOTED
  - - SET 5/8" x 30" IRON ROD W/CAP MKD. "BENTZ SURVEY, INC."
  - △ - COMPUTED POINT ONLY

**NARRATIVE:**  
SURVEY MADE TO EXPLORE POSSIBILITIES OF EXPANDING DUFFY'S RESTAURANT. MORE THAN ADEQUATE AMOUNT OF EXISTING MONUMENTS WERE FOUND. ALSO, CORNERS OF PARCEL AT S.E. CORNER OF BLACK & CROUCH STREETS LOCATED FOR POSSIBLE DEVELOPMENT OF OFF-STREET PARKING.

FIELD CREW: G. LANG & D. DELATTE USING WILD T-1 THEODOLITE AND RED I.E.D.M. COMPUTATIONS BY G. LANG, CHECKED BY D. BENTZ. DRAFTING BY D. HOPKINS.

REGISTERED  
PROFESSIONAL  
LAND SURVEYOR

OREGON  
JULY 12, 1983  
DONALD A. BENTZ  
839