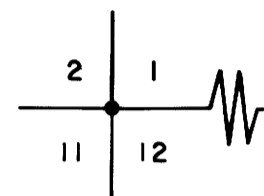


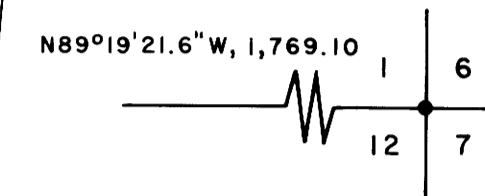
CITY OF ROSEBURG AIRPORT PARK

FILED *BS*  
RECEIVED *BS*  
JAN 4 1984  
COUNTY SURVEYOR  
DOUGLAS COUNTY, ORE. *BS*

MAP FILE *M 95-68 E*  
C. S. File No. *58/268 (1)*



Fd. brass cap.  
See notes filed  
Dec. 6, 1982.



Fd. brass cap.  
See notes filed  
Dec. 6, 1982.

TRACTS

ORCHARD

EDENBOWER

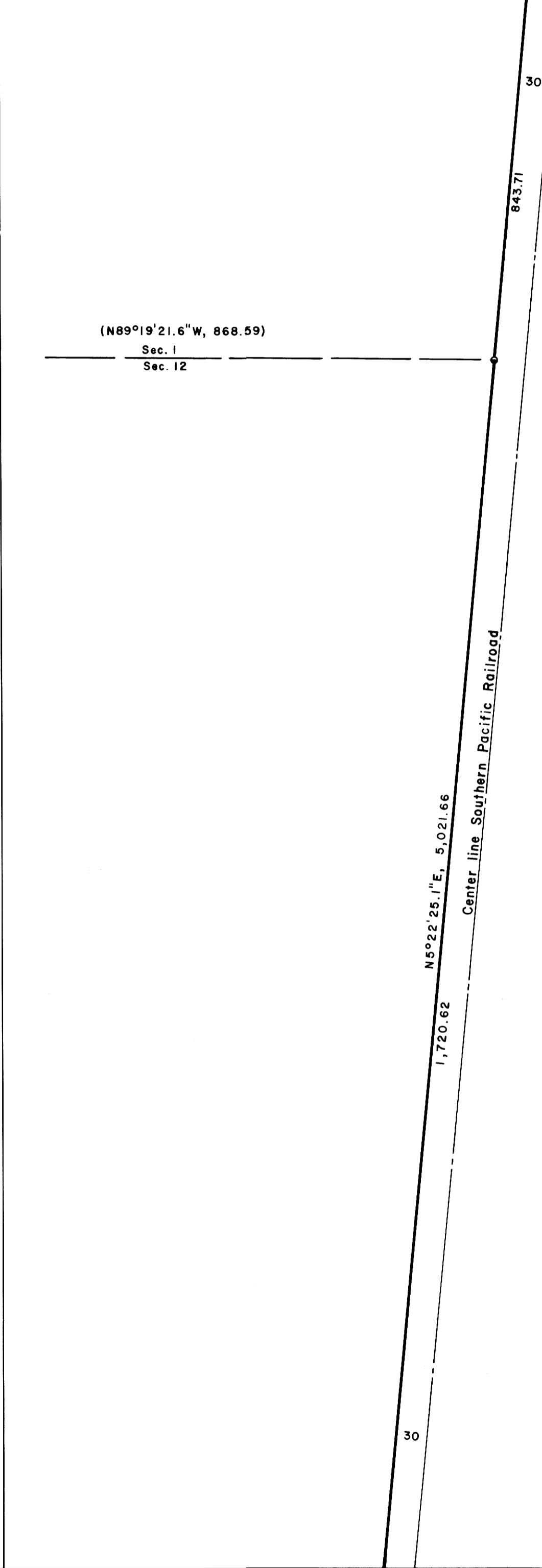
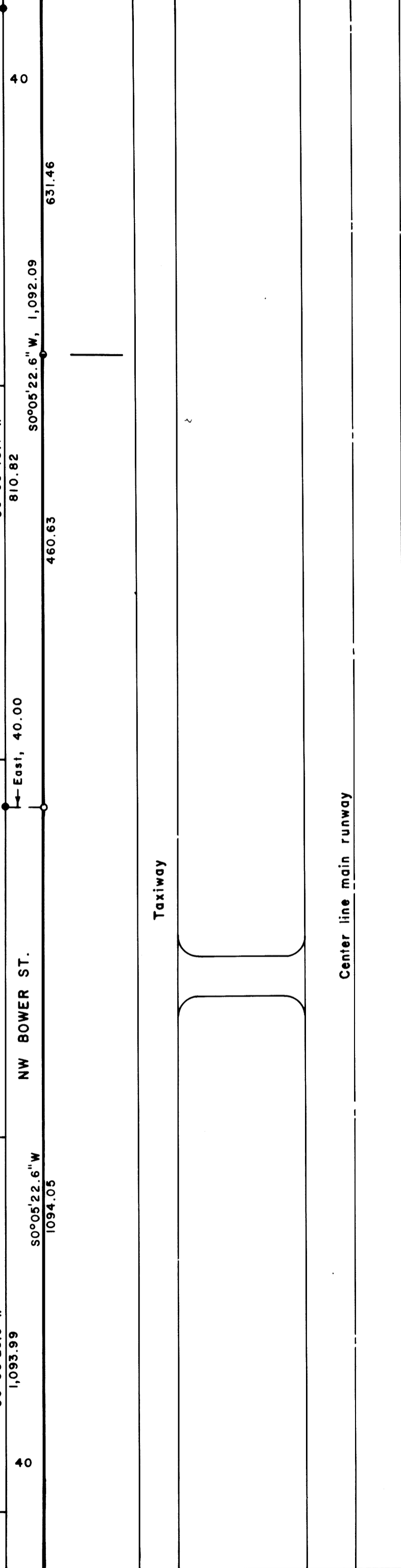
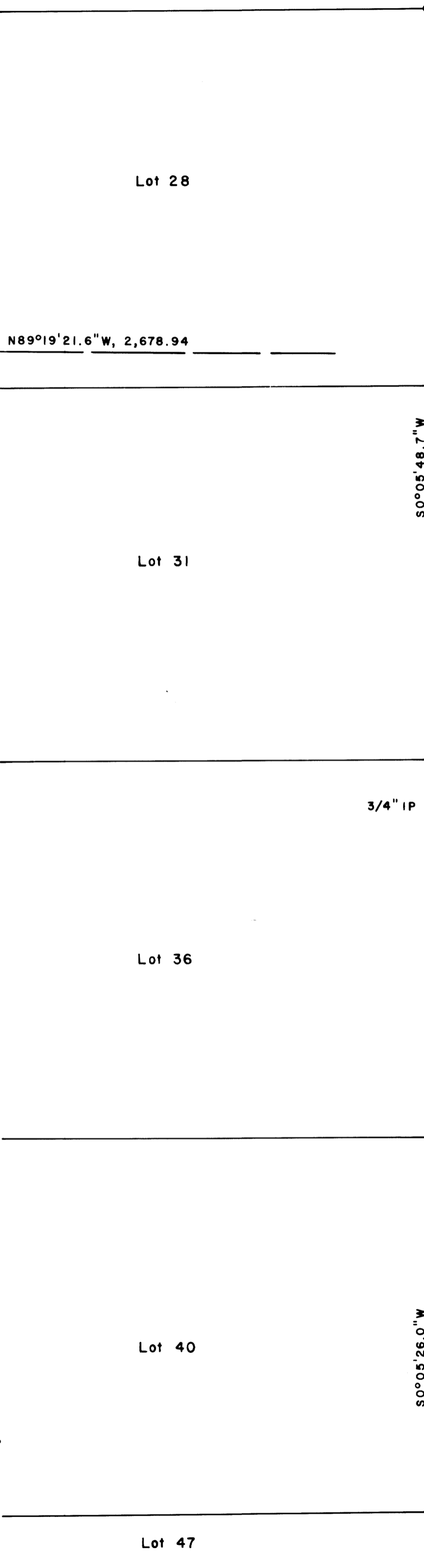
Lot 28

Lot 31

Lot 36

Lot 40

Lot 47



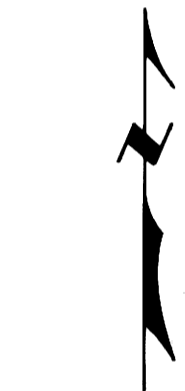
REGISTERED  
PROFESSIONAL  
LAND SURVEYOR

*BA Shaner*

OREGON  
OCT. 4, 1957  
BRUCE A. SHANER  
430

LEGEND

- Corner found (5/8" iron rod unless noted) ●
- Corner set (5/8" x 32" iron rod w/alum. cap mkd. "Shaner Engineering") ○
- Corner computed (not set) •
- Survey boundary ———



Scale: 1" = 100'

MAP FILE *M 95-68 E*  
C. S. File No. *58/268 (1)*