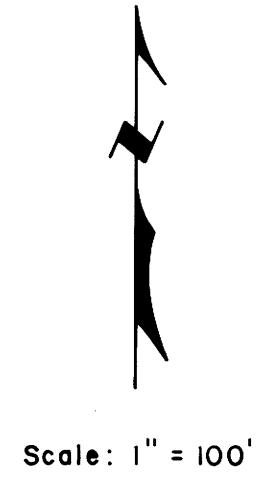
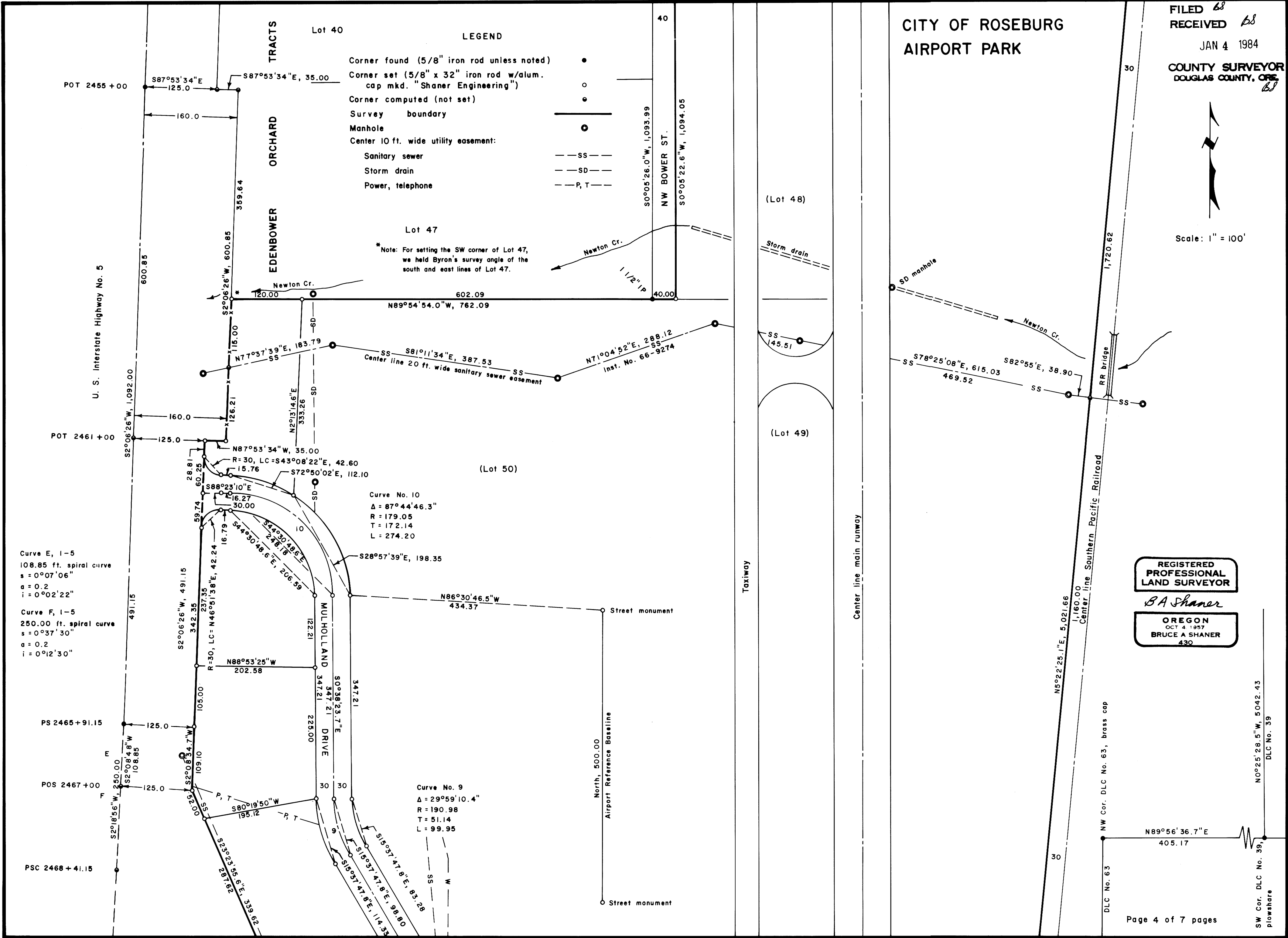


FILED 68
RECEIVED 68
JAN 4 1984
COUNTY SURVEYOR
DOUGLAS COUNTY, ORE
68

MAP FILE M 95-68-D
C. S. File No. 58/268(M)



CITY OF ROSEBURG
AIRPORT PARK



LEGEND

- Corner found (5/8" iron rod unless noted) ●
- Corner set (5/8" x 32" iron rod w/alum. cap mkd. "Shaner Engineering") ○
- Corner computed (not set) ◦
- Survey boundary ———
- Manhole ○
- Center 10 ft. wide utility easement:
 - Sanitary sewer —SS—
 - Storm drain —SD—
 - Power, telephone —P, T—

Lot 47
*Note: For setting the SW corner of Lot 47, we held Byron's survey angle of the south and east lines of Lot 47.

Curve No. 10
Δ = 87°44'46.3"
R = 179.05
T = 172.14
L = 274.20

Curve No. 9
Δ = 29°59'10.4"
R = 190.98
T = 51.14
L = 99.95

Curve E, 1-5
108.85 ft. spiral curve
s = 0°07'06"
a = 0.2
i = 0°02'22"

Curve F, 1-5
250.00 ft. spiral curve
s = 0°37'30"
a = 0.2
i = 0°12'30"

REGISTERED
PROFESSIONAL
LAND SURVEYOR
B.A. Shaner
OREGON
OCT 4 1957
BRUCE A SHANER
430

SW Cor. DLC No. 39, plowshare
NW Cor. DLC No. 63, brass cap
DLC No. 39
N0°25'28.5"W, 5042.43
N89°56'36.7"E, 405.17

MAP FILE M 95-68-D