

CITY OF ROSEBURG AIRPORT PARK

Curve A, 1-5  
 $\Delta = 0^\circ 47' 39.3''$   
 $D = 0^\circ 30' 00''$   
 $R = 11,459.16$   
 $T = 79.42$   
 $L = 158.85$

Curve B, 1-5  
 $\Delta = 2^\circ 00' 00''$   
 $D = 0^\circ 30' 00''$   
 $R = 11,459.16$   
 $T = 200.02$   
 $L = 400.00$

Curve No. 5  
 $\Delta = 53^\circ 51' 53.7''$   
 $R = 381.97$   
 $T = 194.05$   
 $L = 359.09$   
 $LC = N30^\circ 21' 40.6'' W, 346.01$

Curve C, 1-5  
 $\Delta = 1^\circ 19' 20''$   
 $D = 0^\circ 30' 00''$   
 $R = 11,459.16$   
 $T = 132.24$   
 $L = 264.48$

Curve D, 1-5  
 $S = 0^\circ 04' 23''$   
 $a = 0.2$   
 $i = 0^\circ 01' 28''$   
 85.52 ft. spiral

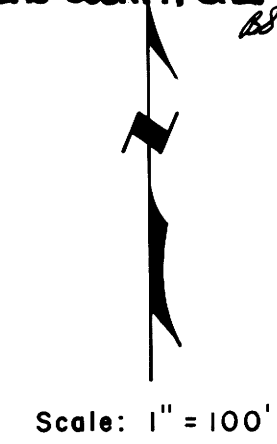
Curve No. 8  
 $\Delta = 30^\circ 08' 19.1''$   
 $R = 190.98$   
 $T = 51.42$   
 $L = 100.45$   
 $LC = S15^\circ 33' 22.4'' E, 99.30$

Curve No. 7  
 $\Delta = 51^\circ 12' 58''$   
 $R = 477.46$   
 $T = 228.84$   
 $L = 426.79$   
 $LC = S25^\circ 07' 14.9'' W, 412.72$

Curve No. 4  
 $\Delta = 52^\circ 00' 41.9''$   
 $R = 381.97$   
 $T = 186.34$   
 $L = 346.74$   
 $LC = N29^\circ 26' 04.6'' W, 334.95$

Curve No. 6  
 $\Delta = 49^\circ 47' 15''$   
 $R = 301.56$   
 $T = 139.93$   
 $L = 262.04$   
 $LC = S25^\circ 50' 05.5'' W, 253.87$

FILED *AS*  
 RECEIVED *AS*  
 JAN 4 1984  
 COUNTY SURVEYOR  
 DOUGLAS COUNTY, ORE.



Scale: 1" = 100'

SPRR R/W Curve  
 $\Delta = 7^\circ 19' 39.9''$   
 $R = 2864.79$   
 $T = 183.44$   
 $L = 366.38$   
 $LC = N1^\circ 42' 35.1'' E, 366.13$

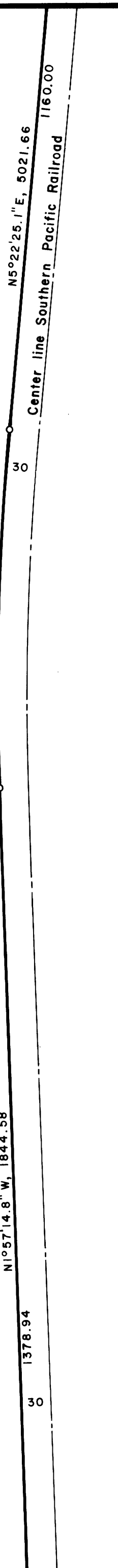
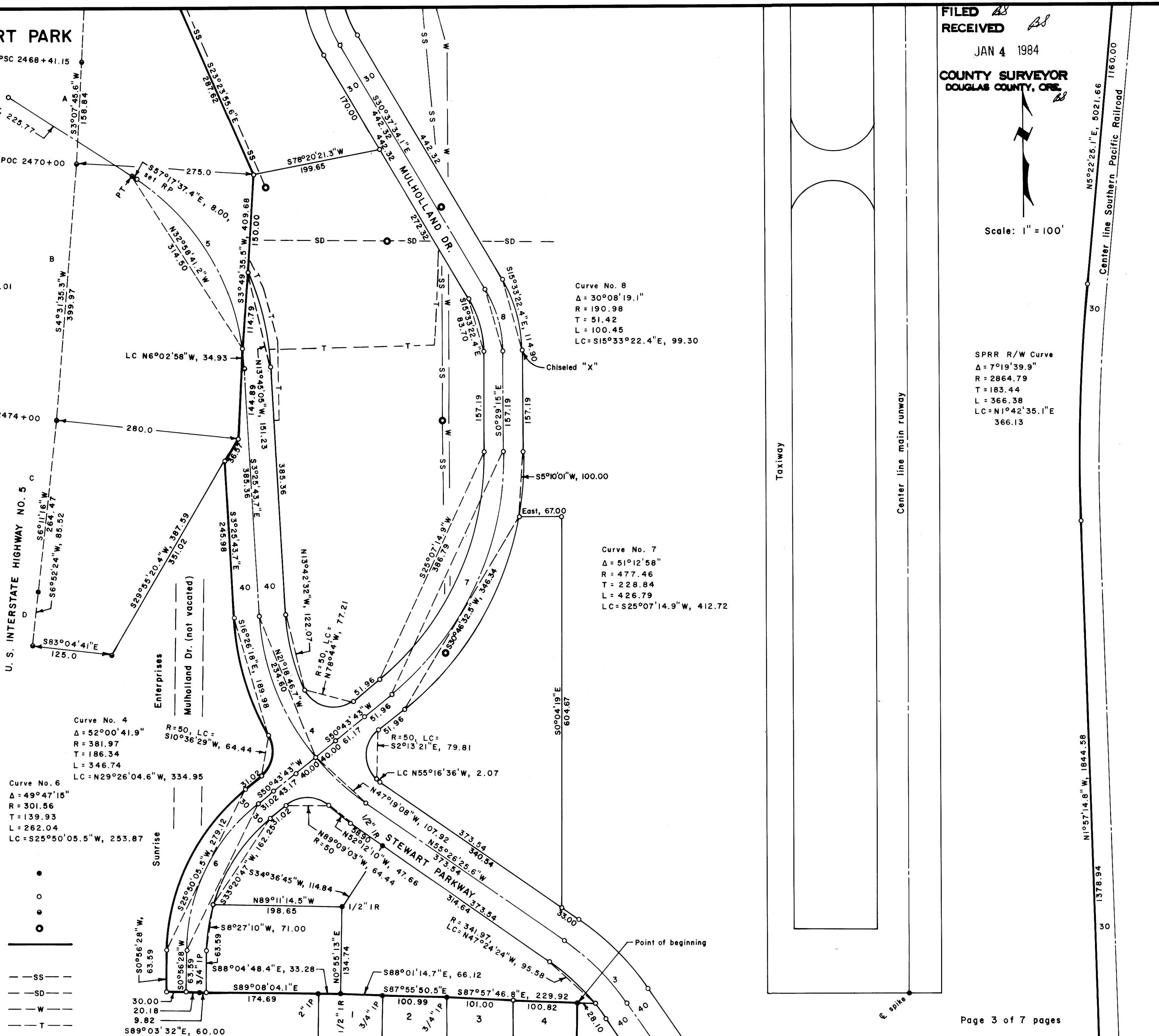
REGISTERED  
 PROFESSIONAL  
 LAND SURVEYOR

*BA Shaner*

OREGON  
 OCT 4, 1957  
 BRUCE A SHANER  
 430

LEGEND

- Corner found (5/8" iron rod unless noted) ●
- Corner set (5/8" x 32" iron rod w/alum. cap mkd. "Shaner Engineering") ○
- Corner computed (not set) ○
- Manhole ○
- Survey boundary ———
- Center 10 ft. wide utility easement:
  - Sanitary sewer — SS —
  - Storm drain — SD —
  - Water — W —
  - Telephone — T —



MAP FILE: *M 95-68 C*  
 C. S. File No. *58/668 (-)*

C.L.B. No. 58/668 (-)  
 MAP FILE: *M 95-68 C*