

COUNTY SURVEYORS FILE DATA
DO NOT REMOVE FROM OFFICE
"RECORD OF SURVEY"
CLABBER CREEK NO. 2

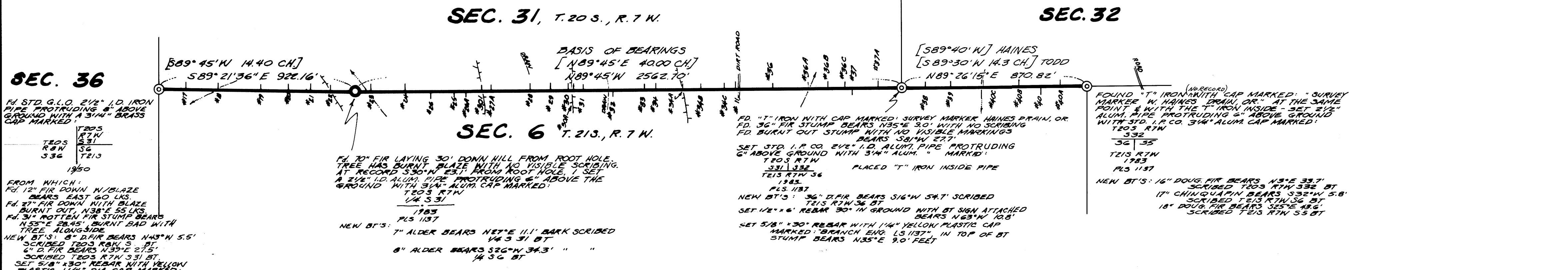
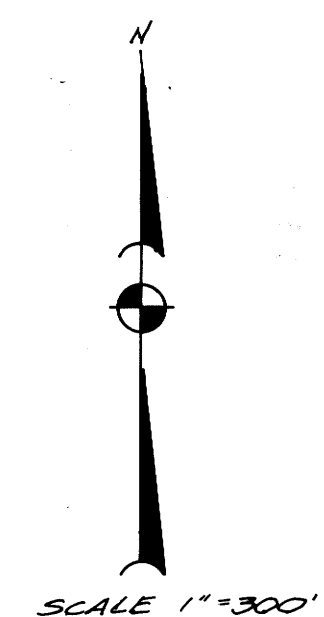
for
INTERNATIONAL PAPER COMPANY

in
SECTION 6, T.21S., R.7W., W.M.
LANE COUNTY, OREGON
NOVEMBER, 1983

M 95-66

NARRATIVE

THIS SURVEY IS A RETRACEMENT OF THE THOMAS E. TODD SURVEY IN 1891 & W. HAINES SURVEY IN 1962. USED AS CONTROL WERE: 1) S.W. CORNER OF SEC. 31 - FOUND MONUMENT SET BY B.L.M. IN 1950; 2) SOUTH 1/4 CORNER OF SEC. 31 - FD. ORIGINAL BT & RE-ESTABLISHED CORNER MONUMENT; 3) S.E. CORNER OF SEC. 31 - FD. HAINES "T" IRON WITH SUPPORTING ORIG. BT EVIDENCE; 4) N.E. CORNER OF SEC. 6 - FD. HAINES RE-ESTABL. "T" MONUMENT. A RANDOM TRAVERSE WAS RUN NEAR THE PROPERTY WITH A 20" JENA THEODOLITE & MAC-14 E.D.M. & OFFSET DISTANCES FROM TRAVERSE STATIONS TO THE PROPERTY LINE WERE MEASURED WITH HAND COMPASS AND TAPE. THE PROPERTY LINE POSTS ARE A 1/2" x 60" REBAR DRIVEN 30" IN THE GROUND WITH AN INTERNATIONAL PAPER CO. (I.P.CO.) PROPERTY LINE SIGN MARKED WITH POINT NO. & APPROX. DISTANCE & BEARING TO THE NEAREST CORNER AND AN I.P.CO. TREE FARM SIGN FACING ADJUTING PROPERTY. EACH POST WAS REFERENCED TWICE BY SETTING A 2" x 2" ALUMINUM TAG MARKED WITH POINT NO., DISTANCE & BEARING FROM THE TAG TO THE POST. ALONGSIDE EACH POST AN ORANGE FLUORESCENT MAGNETIC MARKER WAS PLACED 18" BENEATH THE GROUND SURFACE. A PURPLE FLUORESCENT MAGNETIC MARKER WAS PLACED BESIDE EACH SET MONUMENT. BEARING TREES WERE TIED TO WITH HAND COMPASS & TAPE. DISTANCES & BEARINGS WERE MEASURED TO THE TREE APPROXIMATELY 1' ABOVE THE ROOT CROWN. BT'S 1 MARKED HAVE A BT TAG FACING THE CORNER, AND AN I.P.CO. BT TAG ON THE SIDE OPPOSITE THE CORNER MONUMENT, & DOUBLE RED PAINTED RINGS ABOVE THE DOUBLE RED PAINTED BLAZES. A 3/4" BRASS WASHER STAMPED L.S. 1137 WAS NAILED FLUSH WITH THE BLAZE BETWEEN THE B & T SCRIBED LETTERS. THE PROPERTY LINE WAS CLEARED, FLAGGED & QUARTER BLAZED. A 6" STEEL POST WITH LAND SURVEY MONUMENT SIGN ATTACHED WAS SET ALONGSIDE EACH MONUMENT.



SEC. 36
FD. STD. G.L.O. 2 1/2" I.D. IRON PIPE PROTRUDING 6" ABOVE GROUND WITH A 3/4" BRASS CAP MARKED:
T205 R7W 531
R8W 536 T213
1950
FROM WHICH:
FD. 12" FIR DOWN W/BLAZE BEARS EAST 40 LKS.
FD. 27" FIR DOWN WITH BLAZE BURNT OUT, N38°E 55 LKS.
FD. 31" ROTTEN FIR STUMP BEARS N55°E 28.45' BURNT BAD WITH TREE ALONGSIDE.
NEW BT'S: 8" D.FIR BEARS N43°W 5.5' SCRIBED T205 R7W 531 BT.
6" D FIR BEARS W39°E 27.5' SCRIBED T205 R7W 531 BT.
SET 5/8" x 30" REBAR WITH YELLOW PLASTIC 1/4" DIA. CAP MARKED.
"BRANCH ENG. L.S. 1137" FLUSH WITH THE GROUND

FD. 70" FIR LAYING 30' DOWN HILL FROM ROOT HOLE. TREE HAS BURNT BLAZE WITH NO VISIBLE SCRIBING. AT RECORD 530' N 23.7' FROM ROOT HOLE, I SET A 2 1/2" I.D. ALUM. PIPE PROTRUDING 6" ABOVE THE GROUND WITH 3/4" ALUM. CAP MARKED:
T205 R7W 1/4 S 31
1983
PLS 1137
NEW BT'S: 7" ALDER BEARS NET°E 11.1' BARK SCRIBED 1/4 S 31 BT.
8" ALDER BEARS S26°W 34.3' " " 1/4 S 31 BT

FD. "T" IRON WITH CAP MARKED: SURVEY MARKER HAINES PTAIN. OR FD. 36" FIR STUMP BEARS N35°E 30' WITH NO SCRIBING. FD. BURNT OUT STUMP WITH NO VISIBLE MARKINGS BEARS S81°W 22.7'.
SET STD. I.P.CO. 2 1/2" I.D. ALUM. PIPE PROTRUDING 6" ABOVE GROUND WITH 3/4" ALUM. " MARKED:
T205 R7W 331 1332
T213 R7W 336 1383
PLS 1137
NEW BT'S: 3/4" D.FIR BEARS S16°W 54.7' SCRIBED T213 R7W 336 BT.
SET 1/2" x 6" REBAR 30" IN GROUND WITH BT SIGN ATTACHED BEARS N63°W 10.8'
SET 5/8" x 30" REBAR WITH 1/4" YELLOW PLASTIC CAP MARKED "BRANCH ENG. L.S. 1137" IN TOP OF BT STUMP BEARS N35°E 30' FEET

FOUND "T" IRON WITH "CAP MARKED: " SURVEY MARKER W. HAINES "ORIG. OR." AT THE SAME POINT & WITH THE "T" IRON INSIDE - SET 2 1/2" ALUM. PIPE PROTRUDING 6" ABOVE GROUND WITH STD. I.P.CO. 3/4" ALUM. CAP MARKED:
T205 R7W 332
36 35
T213 R7W 1783
PLS 1137
NEW BT'S: 16" DOUG. FIR BEARS N3°E 39.7' SCRIBED T205 R7W 332 BT.
17" CHINQUAPIN BEARS S32°W 5.8' SCRIBED T213 R7W 336 BT.
18" DOUG. FIR BEARS S25°E 18.6' SCRIBED T213 R7W 336 BT

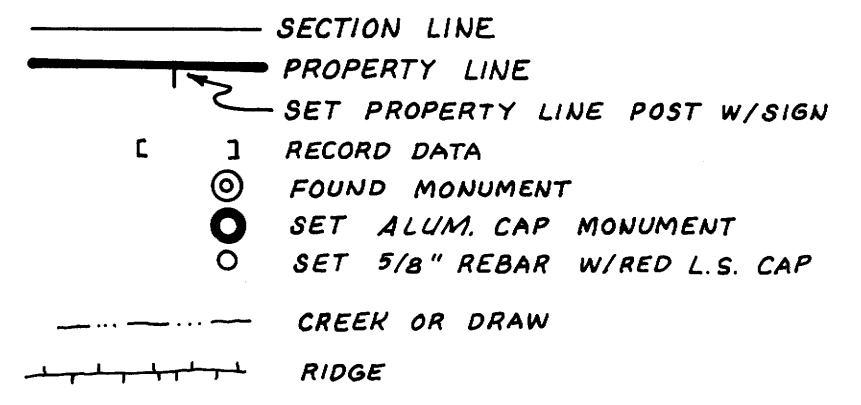
POSTING SCHEDULE

DISTANCE & BEARING FROM POST TO NEAREST CORNER

POINT NO.	BEARING ±	DISTANCE ±	NEAREST CORNER
#17	WEST	124'	TO SECTION COR.
18	"	200'	" " "
19	"	478'	" " "
20	EAST	311'	TO 1/4 COR.
21	"	210'	" " "
22	"	117'	" " "
23	WEST	72'	" " "
24	"	296'	" " "
26	"	353'	" " "
25	"	462'	" " "
26A	"	518'	" " "
301	"	591'	" " "
27A	"	630'	" " "
28	"	816'	" " "
29	"	915'	" " "

POINT NO.	BEARING ±	DISTANCE ± FT.	NEAREST CORNER
430	WEST	995	TO 1/4 COR.
30A	"	1025	" " "
31	"	1066	" " "
32	"	1207	" " "
33	EAST	1208	TO S.E. COR. SEC. 31
34	"	1151	" " "
34A	"	1031	" " "
34B	"	941	" " "
34C	"	835	" " "
11	"	779	" " "
36	"	603	" " "
36A	"	447	" " "
36B	"	348	" " "
36C	"	271	" " "
37	EAST	231	" " "
37A	"	111	" " "
38	WEST	114	" " "
39	"	229	" " "
40C	"	380	" " "
40B	EAST	321	TO NE. COR. SEC. 6
40	"	231	" " "
40A	"	128	" " "

LEGEND



REGISTERED PROFESSIONAL LAND SURVEYOR
DONALD L. BRANCH
1137

F.B. # 43
PROJ. # 83-30

12-20-83

BY: BRANCH ENGINEERING
212 Q STREET
SPRINGFIELD, OREGON

M 95-66