

**SECTION SUBDIVISION SURVEY
IN SEC'S. 13 & 24, T.29S., R.5W.W.M.
NOVEMBER 1983**

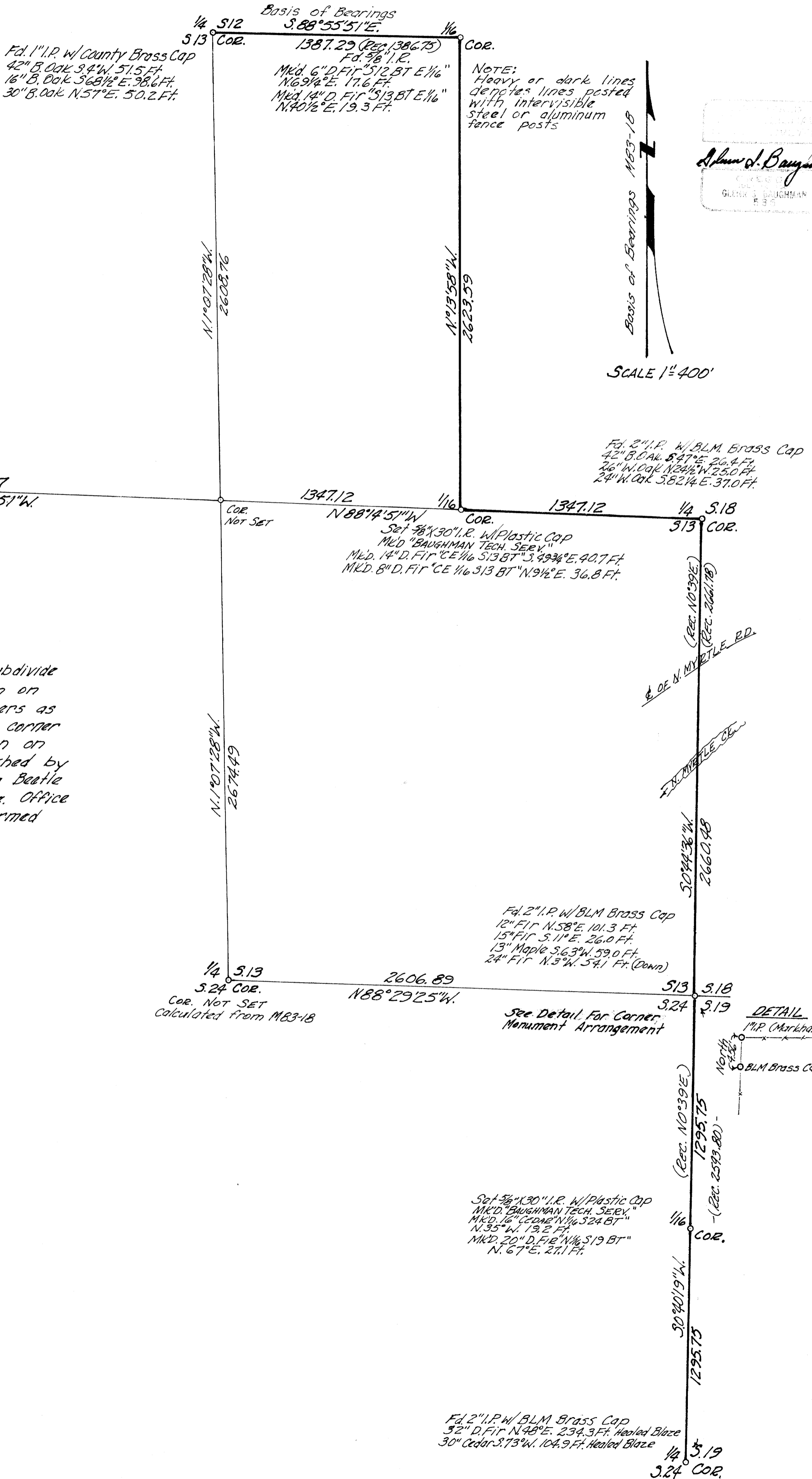
COUNTY SURVEYORS FILE DATA
DO NOT REMOVE FROM OFFICE

FILED *jl*
RECEIVED *jl*
DEC 9 1983

COUNTY SURVEYOR
DOUGLAS COUNTY, ORE.

BY: Baughman Technical Services, Inc.
5157 N. Umpqua Hwy.
Roseburg, OR. 97470

FOR: Stan Tenold
22654 Oak Crest Court
Cupertino, CA., 95014



Narrative:
This survey was conducted to subdivide & post the dark lines as shown on the attached map. We tied corners as indicated & calculated the south 1/4 corner from a previous survey as shown on M83-18. The survey was accomplished by K. DeGroot & L. Baughman using a Baetle 1000 EDM & Lietz TM20C Theodolite. Office calculations & drafting was performed by G. Baughman

Alvin J. Baughman
GLENN J. BAUGHMAN
P. E.