

FILED
RECEIVED
COUNTY SURVEYOR
DOUGLAS COUNTY, OREGON

MAP 111 M 95-55

① SECTION CORNER - S13, S14, S23, S24

Found 3" BCIP set in 1967 by RS 359 with the following accessories:
 Rotted fir stump bears S25°E, 44.2' (1879 BT)
 Rotted hemlock stump bears N30°W, 26.4' (1879 BT)
 13" alder bears N80°E, 12.9' (1967 BT)
 33" cedar bears S02°W, 25.6' (1967 BT)
 27" hemlock bears S40°E, 31.6' (1967 BT)
 24" hemlock bears N27°W, 29.7' (1967 BT)

② 1/4 - S13, S14

Found 2-1/2" BCIP set in 1958 by Douglas County with the following accessories:
 21" hemlock bears N26°W, 20.6' (1958 BT)
 44" hemlock bears S62°E, 21.7' (1933 BT)

LEGEND

- Corner found and used for control
- Set 5/8" x 30" iron rod in ground
- ⊙ Set 5/8" x 12" iron rod in sandstone

NOTES

- 1) Basis of bearing: bearing of the south half of the east section line as returned by RS 359 in a 1972 survey of the section (M 49-20)
- 2) Bearings to accessories are magnetic; mean magnetic variation = 20°E
- 3) Equipment used: Jena O20A theodolite, MAC 1E EDM, 300' steel tape
- 4) Unless otherwise noted, all monuments set are 5/8" x 30" iron rods with 1-1/4" yellow plastic caps attached. Caps are imprinted RPLS 2004

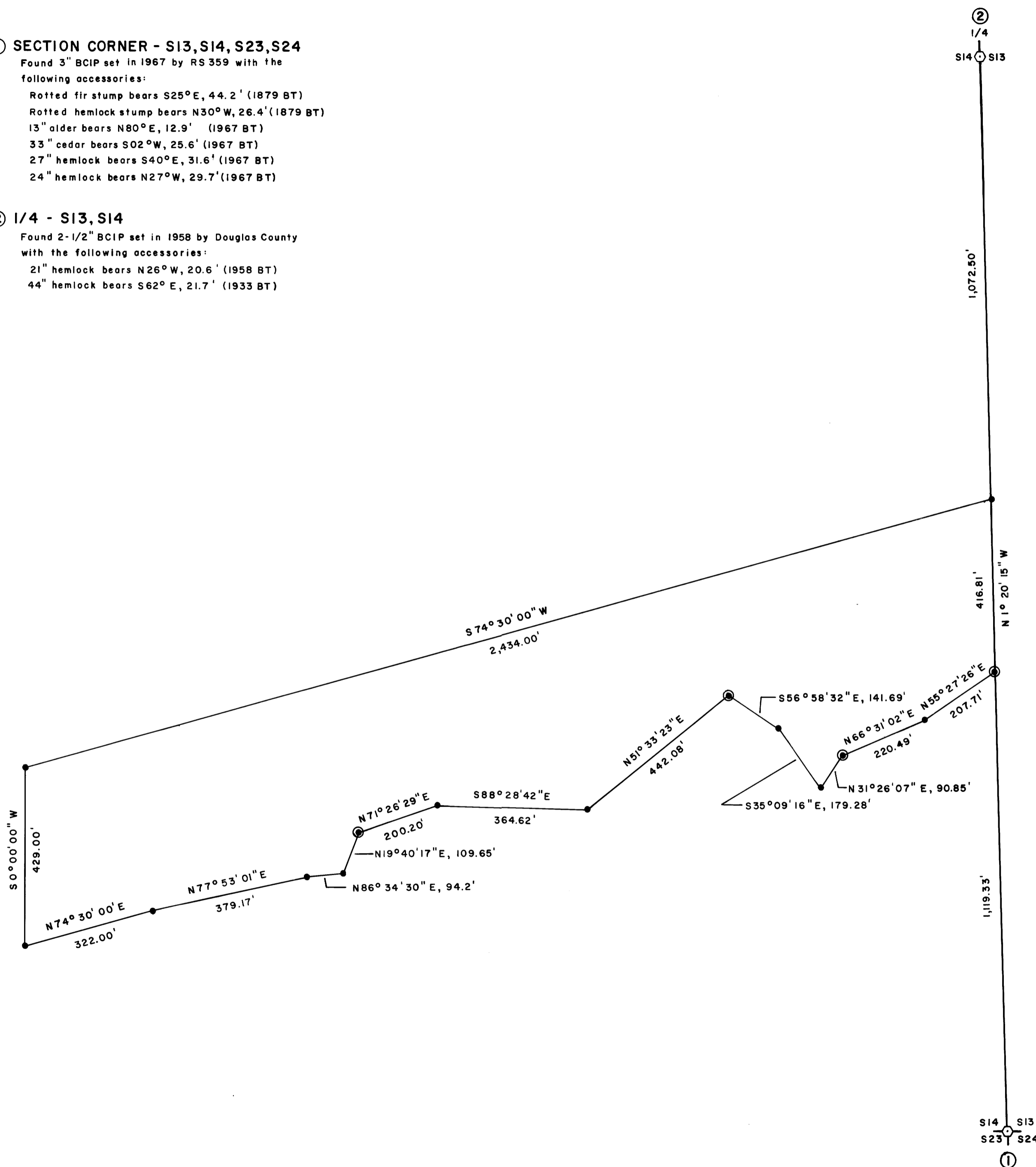
NARRATIVE

This plat and the notes hereon are a correct and accurate representation of a survey performed in Section 14, T.23S., R.10W., W.M., during September, 1983.

In June 1982, Champion International Corporation and Leonard H. White, adjoining landowners in Section 14, executed Bargain and Sale Deeds as recorded in Douglas County Court Journals, Book 821, pages 856 - 859, granting to each other real property as part of a boundary adjustment agreement. This survey establishes the corners of the adjoining properties as now described.

The SE Section Corner is the 1879 G.L.O corner restored from original evidence. The East 1/4 was restored at a point of proportionate measure in 1933.

Closed traverses were executed for the purpose of connecting controlling corners and establishing property corners. Minimum acceptable error was 1 part in 5000.



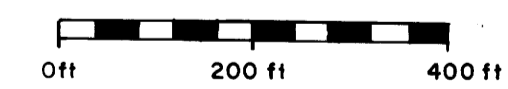
REGISTERED
PROFESSIONAL
LAND SURVEYOR

Gregory K. Miller

OREGON
JULY 18, 1982
GREGORY K. MILLER
2004



GREGORY K. MILLER
OREGON RPLS 2004
P.O. BOX 37
MAPLETON, OREGON
97453



SURVEY IN
SECTION 14, T.23S., R.10W., W.M.
DOUGLAS COUNTY, OREGON

FOR
CHAMPION INTERNATIONAL CORPORATION
SEPTEMBER 1983
COUNTY SURVEYORS USE DATA
DO NOT REMOVE FROM OFFICE

MAP 111 M 95-55