

# RECORD OF SURVEY FOR INTERNATIONAL PAPER COMPANY

## SECTION 16 T.20S. R.9W.-W.M.

FILED  
RECEIVED  
DEC 5 1983  
COUNTY SURVEYOR  
DOUGLAS COUNTY, ORE.

### LEGEND

- CORNER USED FOR CONTROL
- ⊙ SECTION CORNER - NOT USED FOR CONTROL
- CORNER SET
- PROPERTY LINE POSTED
- ( ) RECORD INFORMATION

SCALE 1" = 400'

NOVEMBER 1983 [REVISED 11-29-83]

BASIS OF BEARING - SOLAR OBSERVATION

FOR REFERENCE, ALSO SEE CS. M 94-77, M90-31, M93-63

### NARRATIVE

THIS SURVEY WAS PERFORMED IN ORDER TO LOCATE THE BOUNDARIES OF INTERNATIONAL PAPER COMPANY LANDS IN THE NE 1/4 OF SECTION 16.

THE FIELD WORK WAS COMPLETED IN SEPTEMBER AND OCTOBER OF 1983. EXISTING CONTROL POINTS FROM CS # M 94-77 AND CONTROLLING SECTION CORNERS WERE TIED WITH A CLOSED LOOP TRAVERSE USING A TOPCON TL 60E THEODOLITE AND A K&E AUTORAUNGER EDM. THE TRAVERSE DATA WAS ADJUSTED, POSITIONS OF CONTROLLING CORNERS WERE CALCULATED, AND THE SECTION WAS SUBDIVIDED AS SHOWN. A SECOND CLOSED LOOP WAS RUN FROM WHICH THE C 1/4 AND THE CE 1/16TH CORNERS WERE SET. THEODOLITE AND STEEL TAPE WERE USED TO RUN A CLOSED RANDOM TRAVERSE VERY NEAR TO THE LINES TO BE POSTED.

PROPERTY LINE POSTED, AS INDICATED ON THE MAP, WAS MARKED WITH 1/2" x 1/2" REBAR SET WITHIN 1 FOOT OF TRUE LINE. LINE POINTS WERE OFFSET FROM THE RANDOM TRAVERSE POINTS USING A POCKET TAPE AND COMPASS. AN ORANGE MAGNET IS BURIED 12" DEEP WITHIN 1 FOOT OF EACH REBAR. SIGNS WITH "LS 2013" AND THE DISTANCE TO THE NEAREST CORNER ARE ATTACHED TO EACH REBAR. TREES ON BOTH SIDES OF THE LINE WERE BLAZED AND THE BLAZES PAINTED RED. EACH PROPERTY LINE POINT IS REFERENCED BY 2 ALUMINUM TAGS ATTACHED TO NEARBY TREES. BEARINGS AND DISTANCE FROM THE TAGS TO THE REBAR IS NOTED ON THE TAG.

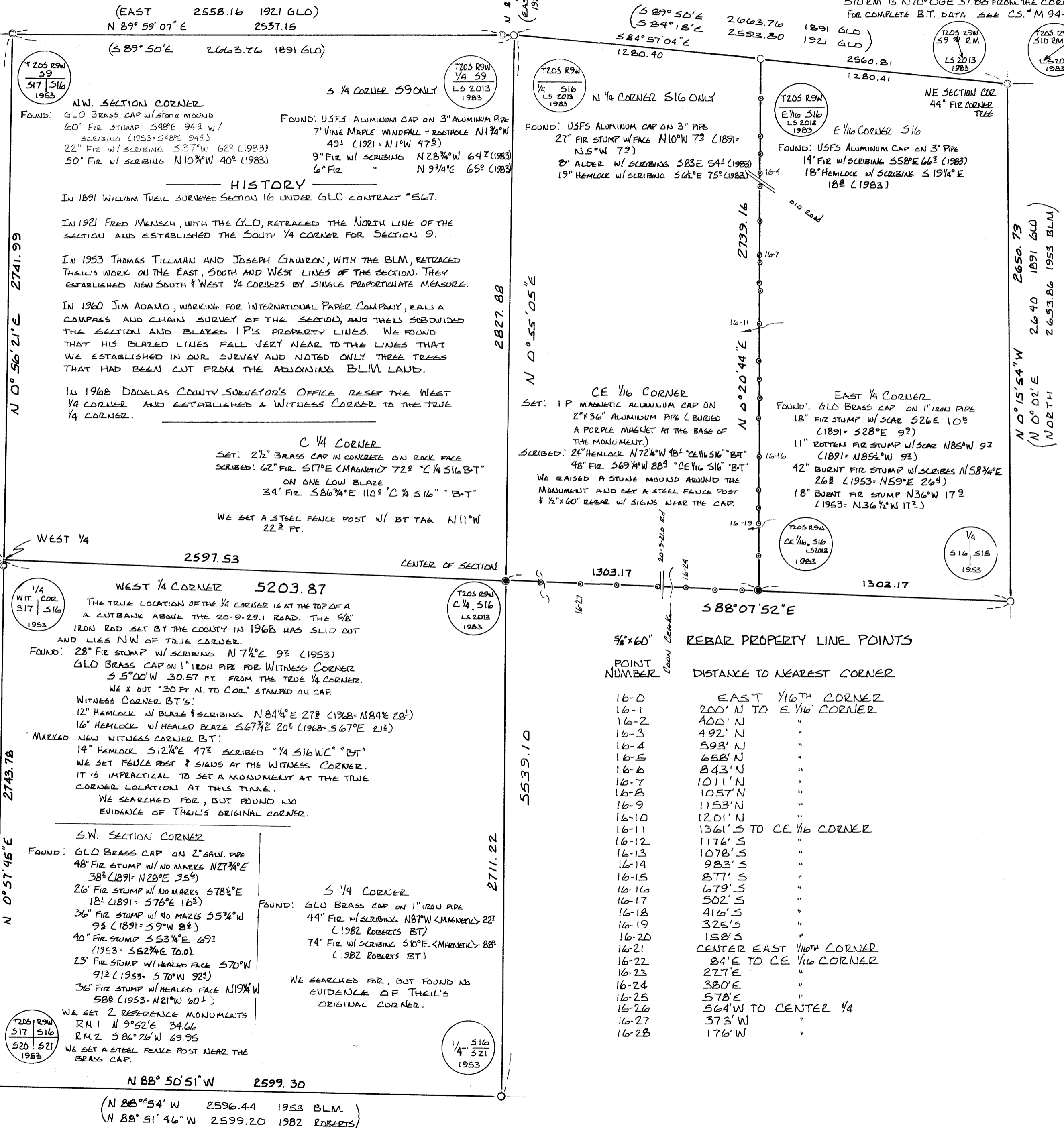
BEARING TREES MARKED FOR THIS SURVEY WERE BLAZED AND SCRIBED AS INDICATED. THE BLAZES WERE PAINTED RED. A BRASS WASHER STAMPED "LS 2013" IS ATTACHED TO THE LOWER BLAZE WITH AN ALUMINUM NAIL. EXCEPT WHERE NOTED AS "<MAGNETIC>", BEARINGS WERE MEASURED WITH THE THEODOLITE TO THE BRASS WASHER, AND DISTANCES TO AN ALUMINUM NAIL AT THE SIDE CENTER OF THE TREE.

REGISTERED  
PROFESSIONAL  
LAND SURVEYOR

Stephen G Swinehart

OREGON  
JULY 16, 1982  
STEPHEN LOY SWINEHART  
2013

SWINEHART LAND SURVEYING  
P.O. BOX 605 NEWPORT, OR



(N 0° 02' E 2640 1891 GLO)  
(N 0° 56' E 2637.02 1953 BLM)

(N 0° 02' E 2640 1891 GLO)  
(N 0° 56' E 2637.02 1953 BLM)

(N 0° 15' 54\"/>

MAP FILE M 95-53