

**COUNTY SURVEYORS FILE DATA
DO NOT REMOVE FROM OFFICE**

FILED
RECEIVED

NOV 29 1983

COUNTY SURVEYOR
DOUGLAS COUNTY, ORE.

SURVEY NARRATIVE TO COMPLY WITH PARAGRAPH 209.250 OREGON REVISED STATUTES

LEGEND

- OSDF P/C = OREGON STATE DEPARTMENT OF FORESTRY 1 1/2"X36" ALUMINUM PIPE WITH 3 3/4" ALUMINUM CAP WITH MAGNETIC INSERT
- = MONUMENT SET
- = MONUMENT FOUND
- WPCP = 4"X4"X72" WHITE PAINTED CEDAR POST
- YMLP = YELLOW METAL LOCATION POSTER
- IG = IN GROUND
- ESTABLISHED = NEW CORNER SET
- REESTABLISHED = LOST GLO, CADASTRAL OR OTHER CORNER RESET BY PROPORTIONATE MEASUREMENT, OR AS NOTED
- #1 [] = RECORD BEARINGS AND DISTANCES IN CHAINS (McCLUNG, 1872, CONTRACT NO. 173)
- #2 [] = RECORD BEARINGS AND DISTANCES (WILFORD N. HAINES, 1966)
- #3 [] = RECORD BEARINGS AND DISTANCES (BEN B. IRVING 1954)

BASIS OF BEARING
SOLAR OBSERVATION

PURPOSE

TO SEPARATE STATE FOREST LANDS AND PRIVATE LANDS LOCATED IN SECTION 34, TOWNSHIP 20 SOUTH, RANGE 6 EAST, WILLAMETTE MERIDIAN.

PROCEDURE

A RANDOM TRAVERSE WAS USED TO CONNECT THE CONTROLLING CORNERS GOVERNING THE SUBDIVISION OF SECTION 34, TOWN, SHIP 20 SOUTH, RANGE 6 WEST, WILLAMETTE MERIDIAN. THE SECTION WAS SUBDIVIDED USING THE PROCEDURES AS OUTLINED IN THE "MANUAL OF INSTRUCTIONS FOR THE SURVEY OF THE PUBLIC LANDS OF THE U.S." BEARING TO ACCESSORIES FOR ESTABLISHED CORNERS WERE TAKEN WITH A STAFF COMPASS SET AT 20 1/2° EAST MAGNETIC DECLINATION. NEW CORNERS AND ACCESSORIES MARKED ACCORDING TO "MANUAL OF INSTRUCTIONS FOR THE SURVEY OF THE PUBLIC LANDS OF THE U.S." DISTANCE MEASURED TO BEARING TREE FACE. FOR DETAILED REPORT ON FOUND CORNERS SEE COUNTY RECORDS.

SURVEY FOR:
STATE OF OREGON - DEPARTMENT OF FORESTRY
SECTION 34, T.20S., R.6W., W.M.

DOUGLAS COUNTY, OREGON
THEODOLITE & EDM SURVEY BY: J. MCINTOSH AND
A. KOREIVA
DRAWN BY: A. KOREIVA
NOVEMBER 3, 1983
SCALE: 1"=500'

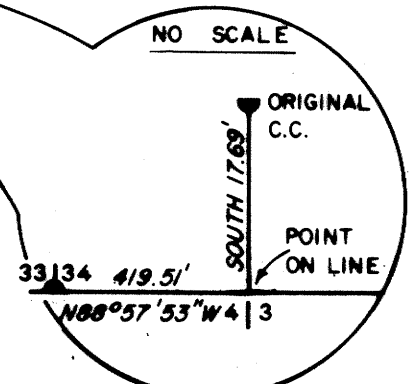
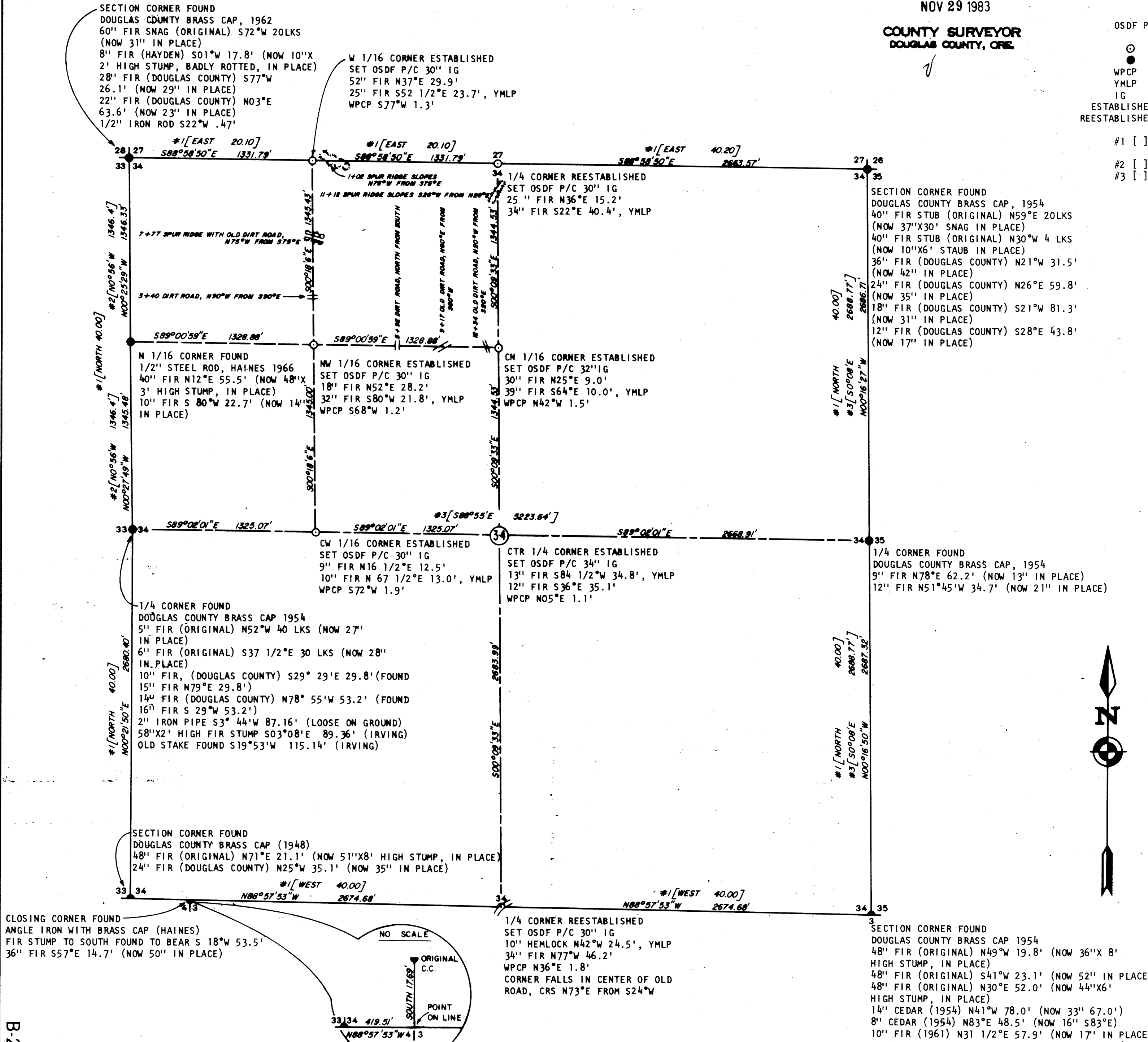
SURVEYED BY:

**REGISTERED
PROFESSIONAL
LAND SURVEYOR**

Lloyd D. Smith

**OREGON
JULY 22, 1977
LLOYD D. SMITH
1101**

LLOYD D. SMITH
300 5TH ST., BAY PARK
COOS BAY, OREGON



MAP FILE M 95-43

MAP FILE M 95-43