

SURVEY OF LOT 6, BLOCK 3
 CRESCENT HEIGHTS ADDITION TO THE CITY OF ROSEBURG
 in the SW 1/4, Section 18, T. 27 S., R. 5 W., W. M.
 Scale: 1" = 40'
 November, 1983

COUNTY SURVEYORS FILE DATA
 DO NOT REMOVE FROM OFFICE

FILED
 RECEIVED *BS*
 NOV 23 1983
 COUNTY SURVEYOR
 DOUGLAS COUNTY, ORE.

SURVEY NARRATIVE:

The purpose of this survey was to monument the corners of Lot 6, Block 3, CRESCENT HEIGHTS ADDITION TO THE CITY OF ROSEBURG. Reference surveys are the plat of CRESCENT HEIGHTS ADDITION TO THE CITY OF ROSEBURG, two surveys by Bruce Shaner, P. E. 4906, recorded as RM1-48 and RM3-5, and a survey by Don Garrett, P. L. S. 544, recorded in CS file 58/98. Monuments were found at the Northeast and Southeast corners of Lot 1, Block 4, per RM3-5 and are the basis of bearings. These monuments together with the monuments found at the Northwest corner of Block 1, and on the East end of Imbler Street per RM1-48 form the basis for proportioning the Northeast and Northwest corners of Block 3. The corners of Lot 6 were then proportioned between the above computed block corners and monuments found on the West line of Lot 13 per CS file 58/98. The proportioned distances along Crescent Street, the Northeasterly line of Block 3, matched record plat distances very closely but a surplus of 10.23 feet was found to exist along N. E. Grandview Street, the Southwesterly line of Block 3. This surplus was caused by an error in the plat of CRESCENT HEIGHT ADDITION under which Block 3 fails to close by 22 feet along the bearing of Imbler Street. The travelled way of N. E. Grandview Street was found to encroach on Lot 6 by approximately 6 feet at the Northwest corner of Lot 6.

Project personnel were Kristian DeGroot, Surveyor assisted by Lewis Baughman, head chainman. Equipment used was a Leitz TM 20 C Theodolite, a Precision International Beetle 1000 E. D. M. and a 100 foot steel tape. Computations and drafting by Kristian O. DeGroot.

For: Paul M. Felker
 P.O. Box 1305
 Roseburg, OR 97470

By: Baughman Technical Services
 5157 N. Umpqua Hwy.
 Roseburg, OR 97470



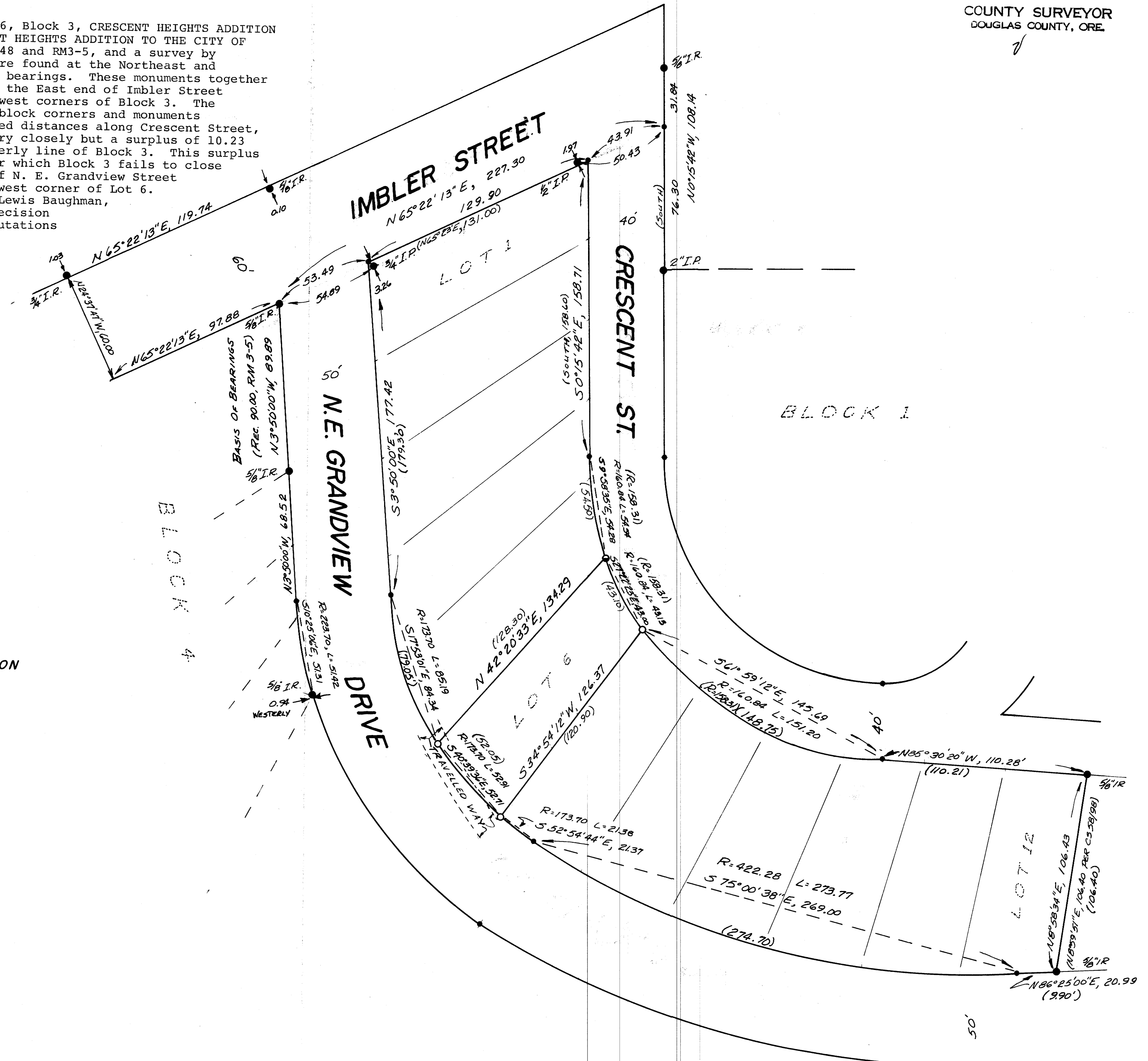
LEGEND

- Found Monument, as noted
- Set 1/2" x 24" I.R. with Surv. Cap mkd. "BAUGHMAN TECH. SERV."
- () Record per CRESCENT HEIGHTS ADDITION
- Point Computed
- Set Spike

REGISTERED
 PROFESSIONAL
 LAND SURVEYOR

Kristian O. DeGroot

OREGON
 JULY 17 1961
 KRISTIAN O. DEGROOT
 1847



MAP FILE...M. 95-47

MAP FILE...M. 95-47