

BS

SECTION CORNER 16, 17, 20, 21

FOUND: DOUGLAS COUNTY 1/4" IRON PIPE WITH BRASS CAP "1966"

52" FIR SNAG, N12E, 27.5'
10" FIR STUB, N15E, 9.3' ("BT" vis.)
36" FIR STUMP, S38E, 38.3'
(set this survey)

T20S R7W

S17 S16
S20 S21

1966

1/4 CORNER 16 & 21

FOUND: U.S.B.L.M. 2 1/2" IRON PIPE WITH BRASS CAP "1966"

18" FIR, N58E, 57.7' (closed face)
(RECORD N54 1/2 E, 66.5 LKS.)
20" FIR, S3E, 36.3' (closed face)

T20S R7W

1/4 S16
S21

1966

SECTION CORNER 15, 16, 21, 22

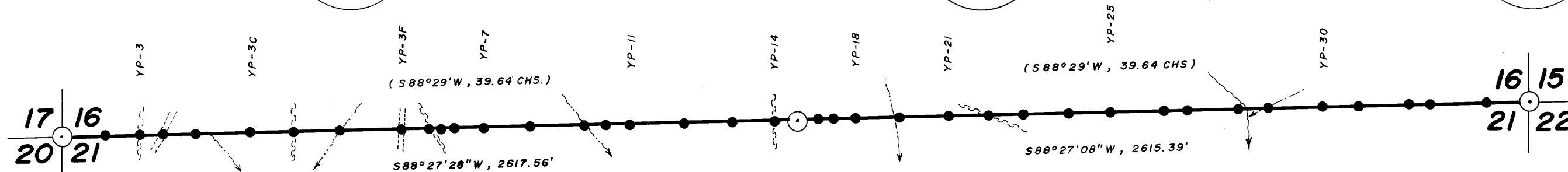
FOUND: U.S.B.L.M. 2 1/2" IRON PIPE WITH BRASS CAP "1966"

46" FIR, N27E, 33.2' (closed face)
42" FIR, S28E, 49.9' (closed face)
48" FIR, S15W, 48.8' (closed face)
50" FIR, N69 1/2 W, 56.0' (closed face)

T20S R7W

S16 S15
S21 S22

1966



LOCATION OF 1/2" X 60" REBAR

POINT NUMBER DISTANCE BEARING TO NEAREST CORNER

SECTION CORNER 16, 17, 20, 21

YP-2	150'	WEST
YP-3	275'	WEST
YP-3A	358'	WEST
YP-3B	473'	WEST
YP-3C	673'	WEST
YP-3D	826'	WEST
YP-3E	987'	WEST
YP-3F	1209'	WEST
YP-4	1306'	WEST
YP-5	1267'	EAST
YP-6	1222'	EAST
YP-7	1119'	EAST
YP-8	949'	EAST
YP-9	758'	EAST
YP-10	682'	EAST
YP-11	597'	EAST
YP-12	402'	EAST
YP-13	231'	EAST
YP-14	83'	EAST

1/4 CORNER 16 & 21

YP-16	72'	WEST
YP-17	129'	WEST
YP-18	206'	WEST
YP-19	364'	WEST
YP-21	538'	WEST
YP-22	681'	WEST
YP-23	803'	WEST
YP-24	970'	WEST
YP-25	1116'	WEST
YP-26	1307'	EAST
YP-27	1224'	EAST
YP-28	1042'	EAST
YP-29	935'	EAST
YP-30	742'	EAST
YP-31	612'	EAST
YP-32	434'	EAST
YP-33	357'	EAST
YP-34	157'	EAST

SECTION CORNER 15, 16, 21, 22

DISTANCES TO BEARING TREES ARE CENTER MEASURE
BEARINGS ARE MAGNETIC, VAR. 20°

REGISTERED
PROFESSIONAL
LAND SURVEYOR

Daniel W. Baker
OREGON
JULY 10, 1982
DANIEL W. BAKER
1975

NARRATIVE

THIS SURVEY WAS MADE IN NOVEMBER, 1983 BY DANIEL W. BAKER OF PEEL BAKER LAND SURVEYING INC., 1262 LAWRENCE, EUGENE, OREGON. THE PURPOSE OF THIS SURVEY WAS TO LOCATE AND MARK THE SOUTH LINE OF SECTION 16, T20S, R7W, W.M. FOR INTERNATIONAL PAPER COMPANY. A KERN K1S THEODOLITE AND DM 502 EDM WERE USED TO PERFORM THIS SURVEY. A RANDOM TRANSIT TRAVERSE, WITH A MINIMUM ERROR OF CLOSURE OF 1/30,000', WAS RUN BETWEEN FOUND CORNERS. BEARINGS WERE BASED ON A SOLAR OBSERVATION. OFFSETS FROM THE RANDOM TRAVERSE TO THE TRUE PROPERTY LINE WERE CALCULATED AND USED TO DETERMINE THE POSITION OF THE TRUE LINE. THE TRUE PROPERTY LINE WAS MARKED IN THE FIELD BY BLAZING TREES (BLAZES PAINTED RED) ON BOTH SIDES OF THE TRUE LINE AND BY 1/2" X 60" REBAR SET AT RANDOM INTERVALS APPROXIMATELY ON TRUE LINE. EACH REBAR WAS REFERENCED BY SWING TIES TO NEARBY TREES MARKED WITH ALUMINUM TAGS SHOWING BEARING AND DISTANCE TO THE REBAR. A 4" X 8" YELLOW SIGN MARKED "PROPERTY LINE INTERNATIONAL PAPER CO. GARDINER, OREGON" IS ATTACHED TO EACH REBAR. EACH SIGN IS STAMPED SHOWING THE POINT NUMBER, SURVEYOR REGISTRATION NUMBER, AND THE DISTANCE (TO NEAREST FOOT) EAST OR WEST TO THE NEAREST CORNER MONUMENT. A MAGNETIC MARKER WAS BURIED APPROXIMATELY ONE FOOT DEEP AND 1/2 FOOT WEST OF EACH REBAR. NO CORNERS WERE SET DURING THIS SURVEY.

BASIS OF BEARING : SOLAR OBSERVATION

SCALE : 1" = 400'

- CORNERS FOUND
- PROPERTY LINE BLAZED AND POSTED
- 1/2" X 60" REBAR WITH YELLOW SIGN
- () RECORD BEARING AND DISTANCE - B.L.M. 1966

**SURVEY OF SOUTH LINE
SECTION 16, T20S, R7W, W.M.
DOUGLAS COUNTY, OREGON**

FOR
INTERNATIONAL PAPER COMPANY

BY
PEEL BAKER LAND SURVEYING INC.
NOVEMBER 10, 1983

MAP FILE M 95-44

M 95-44