

Resurvey to Mark Boundary in N 1/2 Section 32, T 24 S, R 8 W, W. M.

For Roseburg Lumber Company

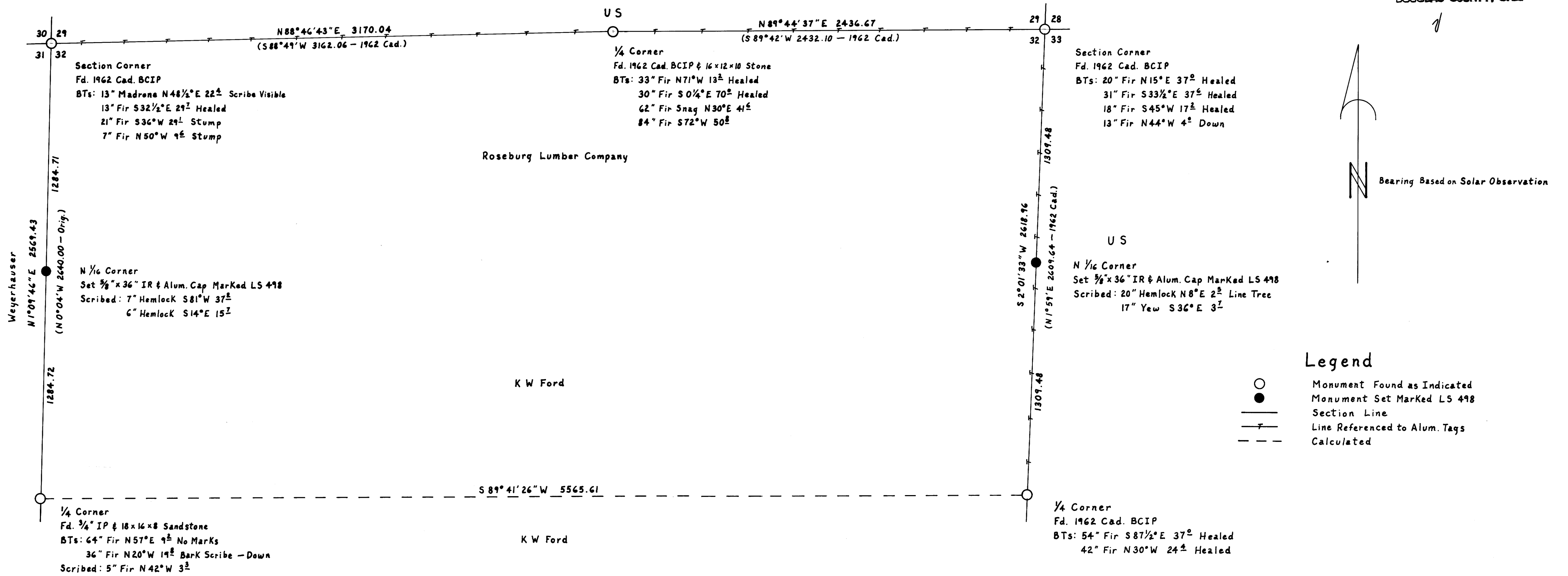
November 10, 1983

Scale: 1" = 400'

FILED
RECEIVED

NOV 21 1983

COUNTY SURVEYOR
DOUGLAS COUNTY, ORE.



I ran a closed traverse in Section 32 using a Jenz 1 second theodolite and a Mac 1-E EDM. I achieved a precision of 1:25,921 and adjusted the traverse by the Crandall method. I set the 1/6 corners at the mid-point on a line between the existing corner monuments.

Howard W. Johnstone PO Box 1088 Roseburg, Oregon

REGISTERED
PROFESSIONAL
LAND SURVEYOR

Howard W. Johnstone

OREGON
MAY 13, 1980
HOWARD W. JOHNSTONE
498

MAP FILE M 95-41

MAP FILE M 95-41