

SECT. 13, T.24S., R.7 W. W. M.

For

Mitchell Logging - ELKTON, OREG. 97436
Phone - 584-2570

FILED ✓
RECEIVED ✓
NOV 4 1983

COUNTY SURVEYOR
DOUGLAS COUNTY, ORE.

REGISTERED
OREGON
LAND SURVEYOR

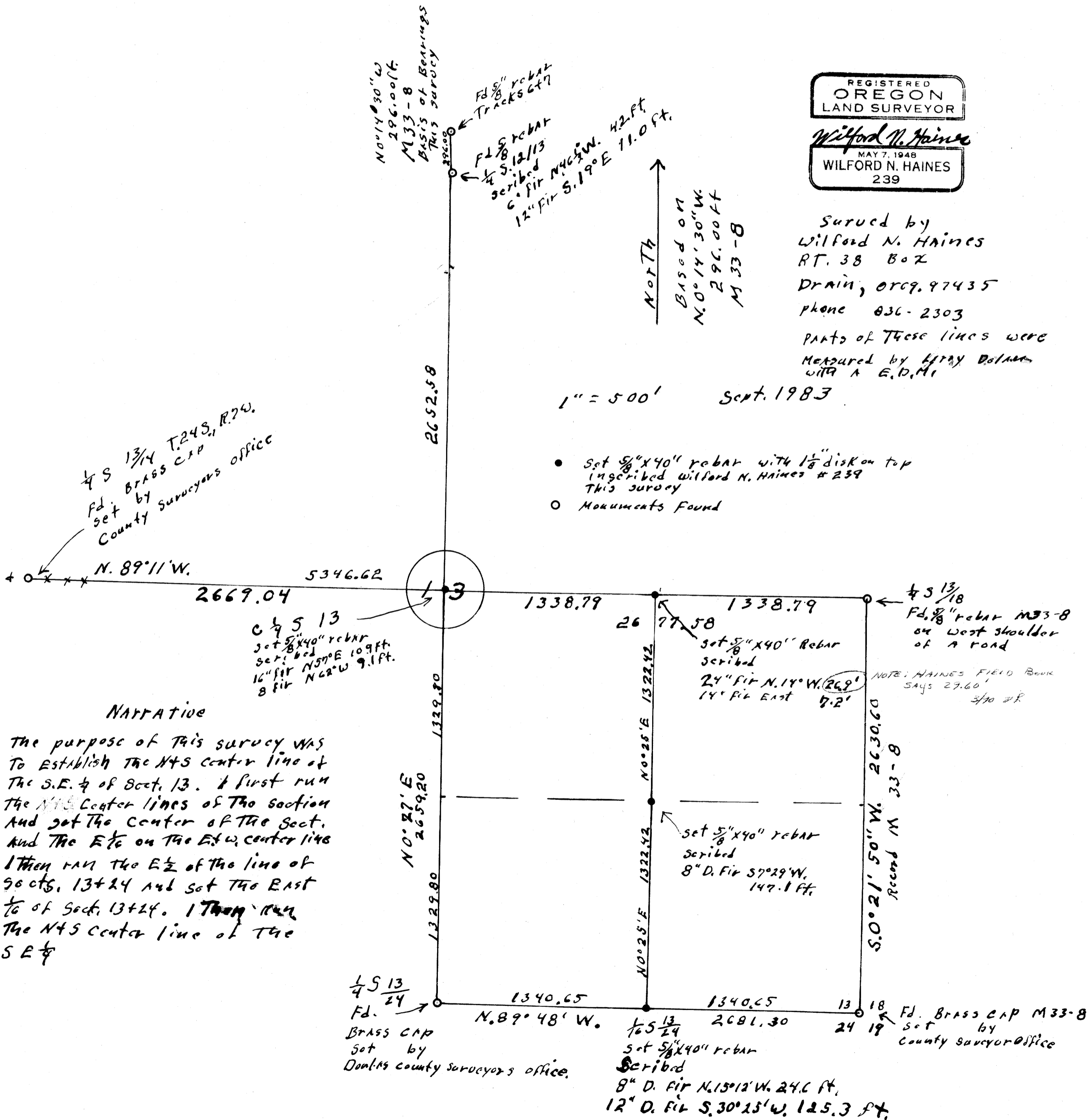
Wilford N. Haines
MAY 7, 1948
WILFORD N. HAINES
239

Surveyed by
Wilford N. HAINES
RT. 38 BOX
DRAIN, OREG. 97435
phone 836-2303

Parts of these lines were
Measured by LARRY BOLMAN
with A. E. D. M.

1" = 500' Sept. 1983

- Set 5/8" x 40" rebar with 1 1/8" disk on top
inscribed Wilford N. Haines # 239
This survey
- Monuments Found



1/4 S 13/4 T.24S., R.7W.
Fd. BRASS CAP
County Surveyors office

1/4 S 13
Set 5/8" x 40" rebar
set by
16" fir N 57° E 109 ft.
8" fir N 62° W 9.1 ft.

1/4 S 13/18
Fd. 5/8" rebar M33-8
on west shoulder
of a road

NOTE: HAINES FIELD BOOK
SAYS 27.60'
3/10 08

NARRATIVE

The purpose of this survey was
to establish the N+S center line of
the S.E. 1/4 of Sect. 13. I first run
the N+S center lines of the section
and got the center of the Sect.
and the E 1/2 on the E+W center line
I then ran the E 1/2 of the line of
Sects. 13+24 and set the East
1/2 of Sect. 13+24. I then ran
the N+S center line of the
S.E. 1/4

1/4 S 13/24
Fd. BRASS CAP
Set by
Douglas County Surveyors office.

1/6 S 13/24
Set 5/8" x 40" rebar
scribed
8" D. Fir N. 15° 12' W. 24.6 ft.
12" D. Fir S. 30° 25' W. 125.3 ft.

13 18
Fd. BRASS CAP M33-8
Set by
County Surveyors office