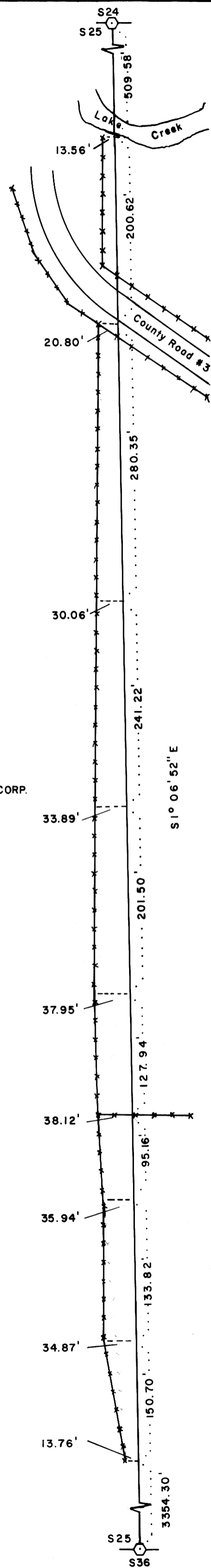


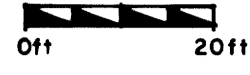
DETAIL 'A'



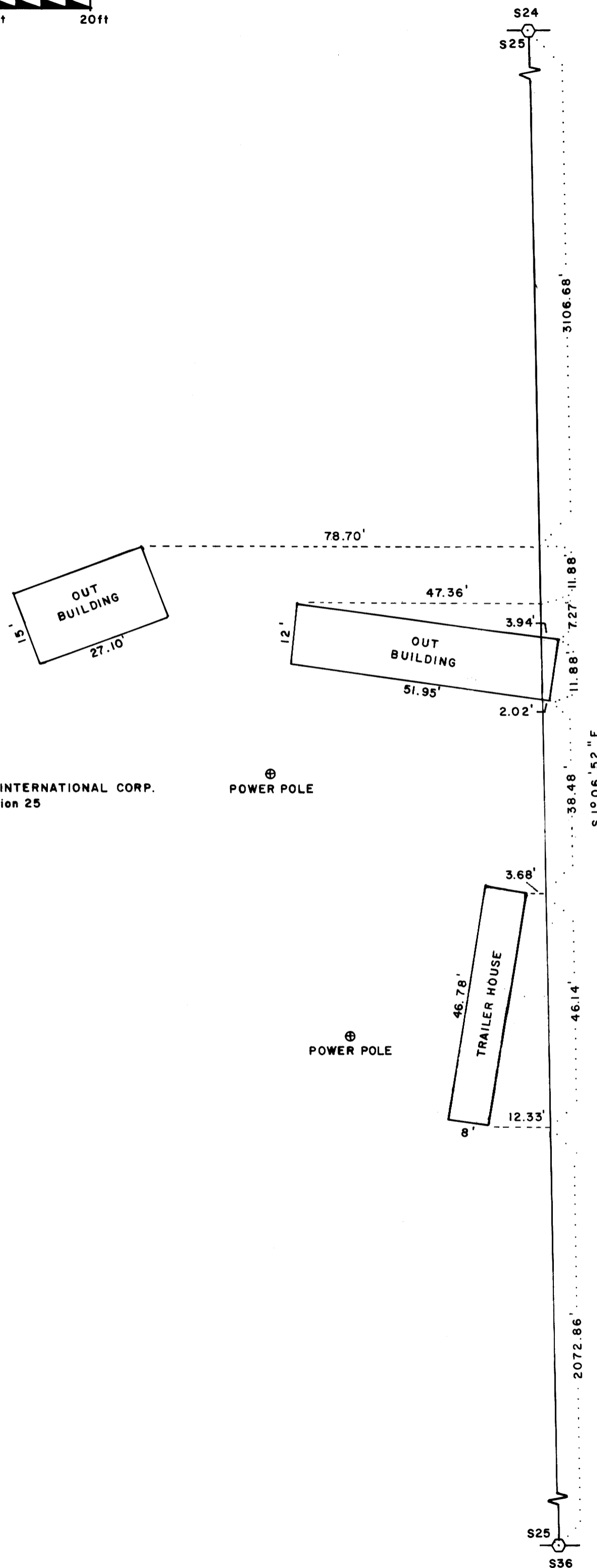
Wire Fence



DETAIL 'B'



CHAMPION INTERNATIONAL CORP.  
W 1/2 Section 25



FILED  
RECEIVED  
NOV 4 1983  
COUNTY SURVEYOR  
DOUGLAS COUNTY, ORE.

This sheet details encroachments onto Champion International Corporation owned lands in the West 1/2 of Section 25.

REGISTERED  
PROFESSIONAL  
LAND SURVEYOR

*Gregory K. Miller*

OREGON  
JULY 18, 1982  
GREGORY K. MILLER  
2004

SURVEY IN  
SECTIONS 23,24,25,& 26, T.23S., R.10 W., W.M.  
DOUGLAS COUNTY, OREGON

FOR  
CHAMPION INTERNATIONAL CORPORATION  
APRIL-AUGUST, 1983

SHEET 2 OF 2 COUNTY SURVEYORS FILE DATA  
DO NOT REMOVE FROM OFFICE

MAP FILE M 95-298

MAP FILE M 95-298