

NOV 4 1983

LEGEND COUNTY SURVEYOR  
DOUGLAS COUNTY, ORE.

- Corner found and used for control
- ◇ Corner position projected, not set
- Corner set this survey
- Property corner found
- Property line posted this survey

**NARRATIVE**

This plot and the notes hereon are a correct and accurate representation of a survey performed in Sections 23, 24, 25, & 26, T. 23 S., R. 10 W., W. M., during the period April - August, 1983. The survey was performed to establish the corners and mark the lines defining Champion International Corporation's ownership in the sections.

The NE and NW section corners of Section 25, the NW section corner of Section 26, the North 1/4 section corner of Section 24, the North 1/4 section corner of Section 26, and the South 1/4 section corner of Section 25 are 1879 G.L.O. corners restored from original evidence. The East and West 1/4 section corners of Section 24 have been restored at points of proportionate measure during surveys performed by the Oregon State Board of Forestry. The North 1/4 section corner of Section 24 was restored by the BLM during a 1967 Dependent Resurvey of a portion of the township. The witness corner to the North 1/4 section corner of Section 25 was established in 1981 by RS 866 from evidence from a witness corner established by RS 359 in 1972 from a 1932 restoration of the 1879 G.L.O. corner. The 1972 WC and an iron rod set in 1981 by RS 1101 to mark the position of a 1932 bearing tree have been obliterated by erosive action of Lake Creek. The position of the 1/4 section corner, which falls in Lake Creek, was projected using record bearing and distance from the 1981 WC.

Closed traverses were executed for the purpose of connecting controlling corners, establishing subdivisional corners, and marking property lines. Minimum acceptable closure was 1 part in 4500.

Positions for all corners set were calculated in accordance with the Manual of Surveying Instructions, 1973 edition, Chapter III. Corners set were monumented in accordance with Chapter III of the Manual. In addition, caps were stamped 'T23S R10W', and 'RPLS 2004'. Property lines were marked using 6" steel fence posts set to within 0.5' of true line at 300' maximum intervals.

**NOTES**

- 1) Basis of bearing: Solar observation
- 2) Bearings to accessories are magnetic; mean magnetic variation = 20° E
- 3) Equipment used: Jena O20A theodolite, MAC I.E. EDM, AGA 076 EDM, 300' steel tape
- 4) Unless otherwise noted, monuments set are 2-1/2" brass caps on 2-1/2" x 30" iron pipes

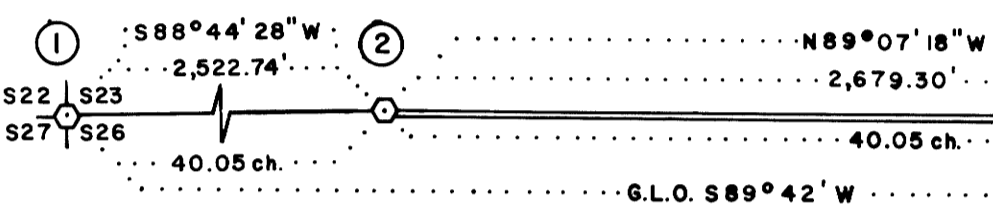
**1 SECTION CORNER - S22, S23, S26, S27**

Found 3" BC cemented in a sandstone outcrop set in 1962 by RS 359 (Douglas County Renewal #55) with the following accessories:  
20" maple bears N39°00'E, 72.9' (1962 BT)  
12" maple bears N88°00'E, 19.1' (1962 BT)  
Sandstone face marked X BO bears N86°00'E, 13.3' (1962 BO)  
20" fir stump bears S58°30'W, 96.5' (1962 BT)  
1879 G.L.O. fir BT in S27 is rotted uproot - all other G.L.O. BT's are missing.

**2 1/4 - S23, S26**

Found 42" maple log on ground next to a 42" maple stump. Log has a face with a portion of a scribed 'S' visible. Stump has a corresponding face but no scribing visible.

Set a 2-1/2" BCIP with the following accessories:  
42" maple stump bears N50°00'E, 13.2' (1879 BT)  
11" alder bears S53°00'E, 48.2' (1983 BT)  
Bark scribed 1/4 S26 BT  
13" hemlock bears S58°00'W, 60.9' (1983 BT)  
Scribed 1/4 S26 BT



**3 SECTION CORNER - S23, S24, S25, S26**

Found 3" BCIP set in 1967 by RS 359 (Douglas County Renewal #68) with the following accessories:  
16" fir bears N26°00'E, 34.9' (1967 BT)  
18" fir bears S02°00'E, 22.9' (1967 BT)  
13" fir bears S53°00'W, 19.5' (1967 BT)  
21" fir bears N66°00'W, 37.8' (1967 BT)  
Rotted fir stub bears N59°00'E, 14.2' (1879 BT)  
72" fir snag bears S23°00'E, 6.2' (1879 BT)  
Rotted fir stub bears S80°00'W, 9.5' (1879 BT)  
36" fir stump bears S71°00'W, 15.8' (no record)

**4 S1/16 - S23, S24**

Set 2-1/2 BCIP with the following accessories:  
18" fir bears N35°00'E, 7.5' (1983 BT)  
Scribed S1/16 S24 BT  
18" fir bears N02°00'W, 7.7' (1983 BT)  
Scribed S1/16 S23 BT  
3" BCIP set in 1967 by RS 359 bears S02°20'07"W, 5.97'

**5 1/4 - S23, S24**

Found 3" BCIP set in 1967 by RS 359 (Douglas County Renewal #69) with the following accessories:  
34" fir bears S26°00'E, 12.4' (1967 BT)  
32" fir stump bears S60°00'W, 32.3' (1967 BT)

**6 1/4 - S13, S24**

Found BCIP set in 1967 by the BLM with the following accessories:  
19" maple bears N52°30'E, 18.5' (1967 BT)  
24" fir bears S06°00'E, 36.8' (1967 BT)

**7 1/4 - S19, S24**

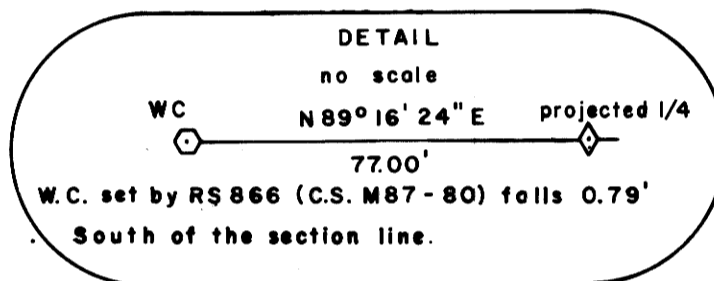
Found 3" BCIP set in 1981 by RS 1101 with the following accessories:  
24" hemlock bears S07°00'E, 26.4' (1981 BT)  
20" hemlock bears N46°00'W, 21.9' (1981 BT)  
5/8" iron rod bears N80°00'W, 23.8' (1981 BO)

**8 CS 1/16 - S24**

Set 1/2" square X 12" long spike with 1" diameter head in asphalt road, with the following accessories:  
16" fir bears N36°00'E, 49.0' (1983 BT)  
15" fir bears S49°00'E, 48.5' (1983 BT)  
Both scribed CS 1/16 S24 BT  
Head of spike is stamped RPLS 2004 1983

**9 W.C. - 1/4 - S24, S25**

Found 2-1/2" BCIP set in 1981 by RS 866 (Douglas County Renewal #104) with the following accessories:  
40" maple bears N40°30'W, 37.0' (1981 BT)  
North end of east guard rail on bridge bears S82°30'W, 66.5' (1981 BO)  
NOTE: Lake Creek's erosive action has obliterated the WC set in 1972 (Ren. # 92) and the 5/8" iron rod set in 1981 by RS 1101 to mark the position of a BT from Ren. # 29.



**10 SECTION CORNER - S19, S24, S25, S30**

Found 2-1/2" BCIP set in 1957 by Douglas County (Douglas County Renewal # 28) next to a 1" iron pipe set in 1923 by Douglas County (Ren. # 1) with the following accessories:  
16" fir bears S68°30'E, 24.6' (1957 BT)  
24" fir bears S64°30'W, 41.3' (1957 BT)  
8" fir bears N89°00'W, 38.0' (1957 BT)  
13" fir bears N56°00'E, 43.8' (no record)  
24" fir stump bears N64°00'E, 50.4' (no record)

**11 PROPERTY CORNER, S25**

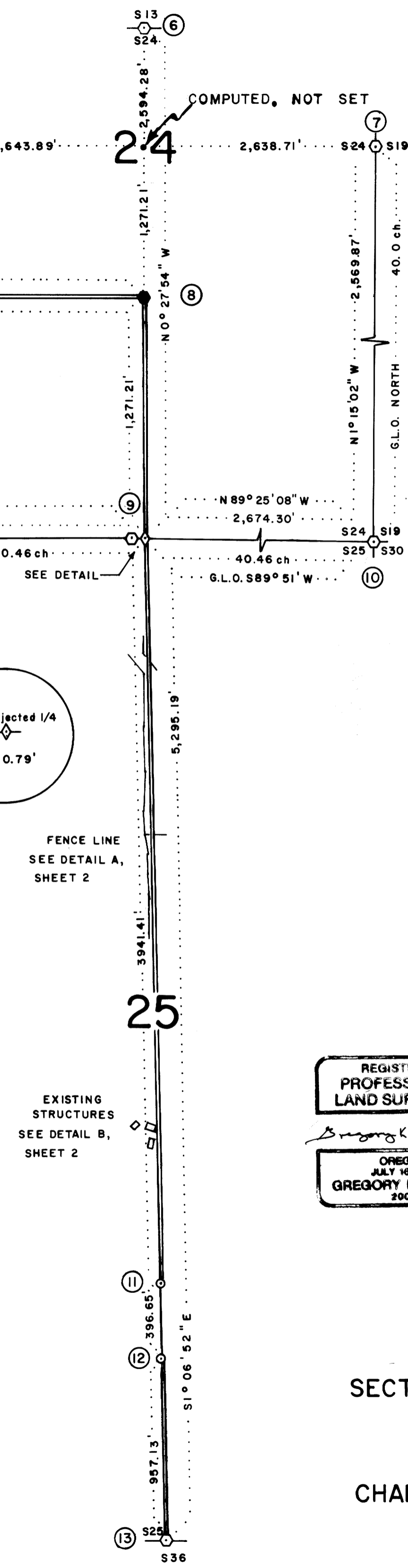
Found 5/8" iron rod set in 1981 by RS 866 (County Survey File M87-80)

**12 PROPERTY CORNER, S25**

Found 5" steel fence post set in 1981 by RS 866 (County Survey File M87-80)

**13 1/4 - S25, S26**

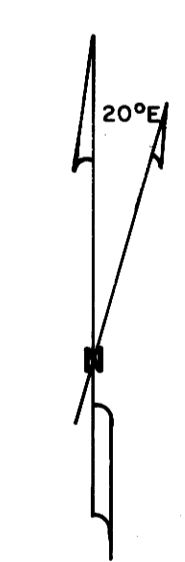
Found 2-1/2" BCIP set in 1976 by RS 1032 (Douglas County Renewal # 102) with the following accessories:  
20" hemlock stub bears S21°00'E, 8.9' (1879 BT)  
22" hemlock bears S58°00'E, 22.2' (1976 BT)  
20" fir bears N38°00'W, 9.3' (1976 BT)  
18" hemlock stub bears N12°00'W, 22.8' (1879 BT)



FENCE LINE  
SEE DETAIL A,  
SHEET 2

EXISTING  
STRUCTURES  
SEE DETAIL B,  
SHEET 2

REGISTERED  
PROFESSIONAL  
LAND SURVEYOR  
*Gregory K. Miller*  
OREGON  
JULY 14, 1982  
GREGORY K. MILLER  
2004



**SURVEY IN**  
SECTIONS 23, 24, 25, & 26, T. 23 S., R. 10 W., W. M.  
DOUGLAS COUNTY, OREGON

FOR  
**CHAMPION INTERNATIONAL CORPORATION**

APRIL-AUGUST, 1983  
SHEET 1 OF 2

COUNTY SURVEYORS FILE DATA  
DO NOT REMOVE FROM OFFICE

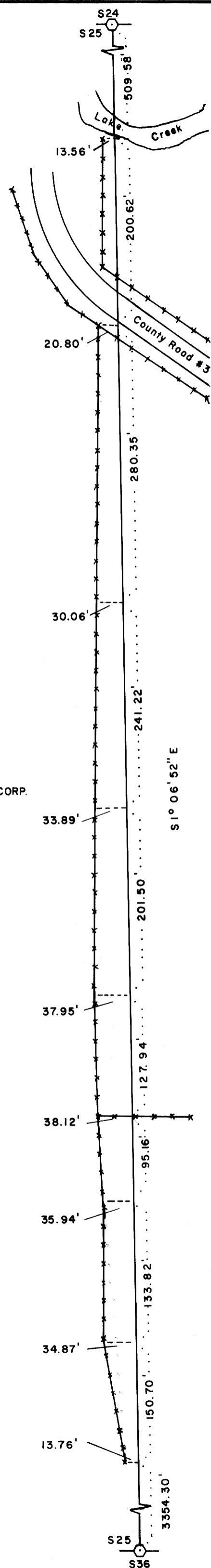
MAP FILE: M 95-29A

MAP FILE: M 95-29A

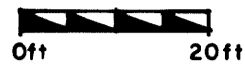
DETAIL 'A'



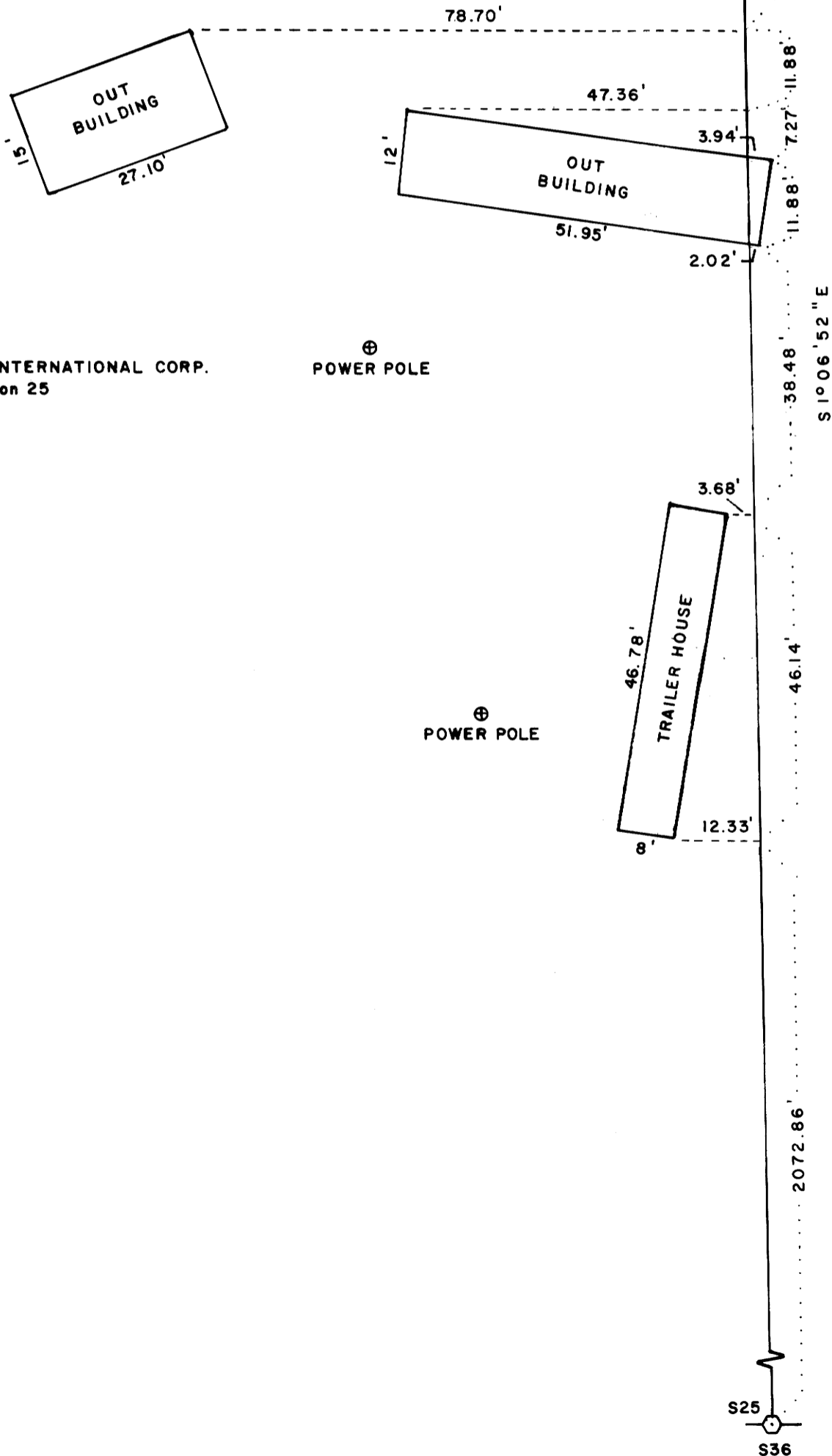
Wire Fence



DETAIL 'B'



CHAMPION INTERNATIONAL CORP.  
W 1/2 Section 25



FILED  
RECEIVED  
NOV 4 1983  
COUNTY SURVEYOR  
DOUGLAS COUNTY, ORE.

This sheet details encroachments onto Champion International Corporation owned lands in the West 1/2 of Section 25.

REGISTERED  
PROFESSIONAL  
LAND SURVEYOR

*Gregory K. Miller*

OREGON  
JULY 18, 1982  
GREGORY K. MILLER  
2004

SURVEY IN  
SECTIONS 23,24,25,& 26, T.23S., R.10 W., W.M.  
DOUGLAS COUNTY, OREGON

FOR  
CHAMPION INTERNATIONAL CORPORATION  
APRIL-AUGUST, 1983

SHEET 2 OF 2 COUNTY SURVEYORS FILE DATA  
DO NOT REMOVE FROM OFFICE

MAP FILE M 95-298

MAP FILE M 95-298