

N.W. SECTION CORNER

FD. 1953 G.L.O. BRASS CAP
 40" FIR SNAG , N28°E , 24.0' (NO MARKS) , 1891 B.T.
 54" FIR , S49°W , 48.8' (NO MARKS) , 1891 B.T.
 72" FIR , N52°W , 25.6' (BARK SCRIBE) , 1891 B.T.
 16" HEMLOCK , S55°E , 11.2' (SCRIBE VIS.) , 1953 B.T.
 22" HEM. STUMP , N5°E , 62.9' (SCRIBE VIS.) , 1953 B.T.

NORTH 1/4 CORNER

FD. 1953 G.L.O. BRASS CAP
 24" DOWNED FIR , N2°E , 32.0' (SCAR VIS.) , 1953 B.T.
 15" FIR , S38°E , 32.7' (SCRIBE VIS.) , 1982 B.T.
 17" MAPLE , N39°E , 38.5' (SCRIBE VIS.) , 1982 B.T.

N.E. SECTION CORNER

FD. 1953 G.L.O. BRASS CAP
 22" FIR STUMP , S64°W , 27.0' (NO MARKS) , 1891 B.T.
 30" FIR STUMP , N38°W , 37.7' (NO MARKS) , 1891 B.T.
 36" FIR STUMP , S68°E , 31.1' (NO MARKS) , 1891 B.T.
 62" FIR , N24°E , 41.8' (NO MARKS) , 1891 B.T.
 15" FIR , S27°E , 32.4' (SCAR VIS.) , 1953 B.T.
 24" FIR , S33°W , 50.8' (SCAR VIS.) , 1953 B.T.
 36" FIR , N2°W , 54.6' (SCAR VIS.) , 1953 B.T.
 62" FIR , N24°E , 41.8' (SCAR VIS.) , 1953 B.T.

COUNTY SURVEYORS FILE DATA
DO NOT REMOVE FROM OFFICE

FILED
 RECEIVED

OCT 26 1983

COUNTY SURVEYOR
DOUGLAS COUNTY, ORE.

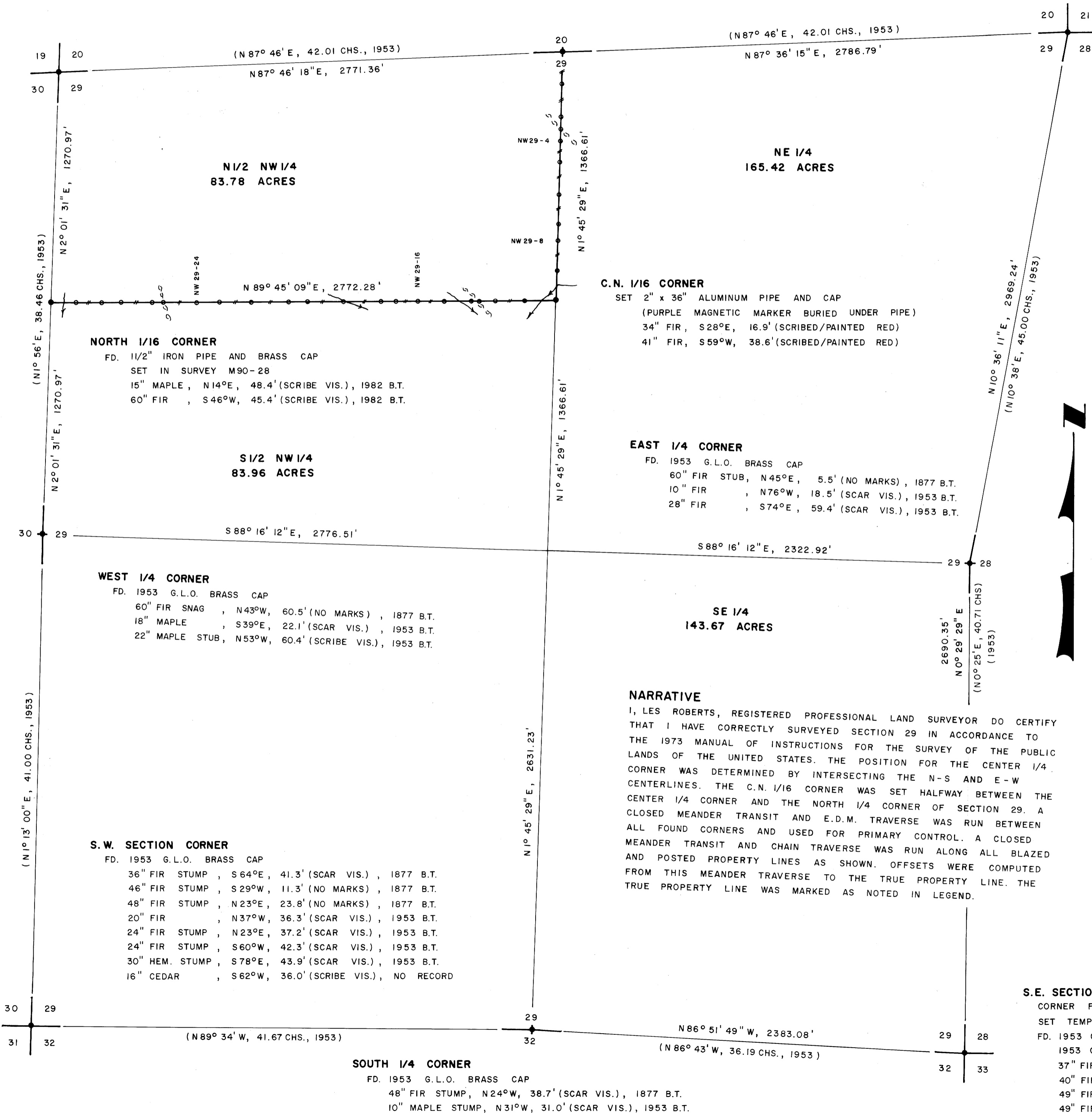
SURVEY OF

SECTION 29, T20S, R9W, W.M.
 DOUGLAS COUNTY, OREGON
 FOR
 INTERNATIONAL PAPER COMPANY

BY
 ROBERTS SURVEYING INC.

29 WEST 29TH STREET
 EUGENE, OREGON 97405

SEPTEMBER 10, 1983



C.N. 1/16 CORNER

SET 2" x 36" ALUMINUM PIPE AND CAP
 (PURPLE MAGNETIC MARKER BURIED UNDER PIPE)
 34" FIR , S28°E , 16.9' (SCRIBED/PAINTED RED)
 41" FIR , S59°W , 38.6' (SCRIBED/PAINTED RED)

EAST 1/4 CORNER

FD. 1953 G.L.O. BRASS CAP
 60" FIR STUB , N45°E , 5.5' (NO MARKS) , 1877 B.T.
 10" FIR , N76°W , 18.5' (SCAR VIS.) , 1953 B.T.
 28" FIR , S74°E , 59.4' (SCAR VIS.) , 1953 B.T.

LEGEND

- CORNERS FOUND AND USED FOR CONTROL
- CORNERS SET, 2" ALUMINUM PIPE WITH ALUMINUM CAP. CAPS STAMPED S-T-R, DATE AND P.L.S. NO. 1039.
- LINES MARKED WITH RED PAINTED BLAZES, 1/2" x 60" IRON RODS AND RED RIBBON. A WHITE TREE FARM SIGN AND A YELLOW PROPERTY LINE SIGN, WITH P.L.S. NO. 1039 STAMPED UPON, IS ATTACHED TO EACH ROD. RODS ARE REFERENCED BY TWO 3" x 3" ALUMINUM TAGS NAILED TO NEARBY TREES. TAGS NOTE BEARING AND DISTANCE FROM TREE TO IRON ROD.
- () DATA OF RECORD, 1953 G.L.O. SURVEY
- BASIS OF BEARING, SOLAR OBSERVATION
- DISTANCE TO BEARING TREES ARE CENTER MEASURE
- ALL NEW BEARING TREES ARE SCRIBED AND HAVE A BRASS WASHER STAMPED "P.L.S. 1039" NAILED TO LOWER BLAZE.
- (M.M.) INDICATES LOCATION OF BURIED MAGNETIC MARKERS. MARKERS ARE FLUORESCENT ORANGE IN COLOR AND ARE BURIED 12" TO 18" DEEP
- SCALE 1" = 400'

NARRATIVE

I, LES ROBERTS, REGISTERED PROFESSIONAL LAND SURVEYOR DO CERTIFY THAT I HAVE CORRECTLY SURVEYED SECTION 29 IN ACCORDANCE TO THE 1973 MANUAL OF INSTRUCTIONS FOR THE SURVEY OF THE PUBLIC LANDS OF THE UNITED STATES. THE POSITION FOR THE CENTER 1/4 CORNER WAS DETERMINED BY INTERSECTING THE N-S AND E-W CENTERLINES. THE C.N. 1/16 CORNER WAS SET HALFWAY BETWEEN THE CENTER 1/4 CORNER AND THE NORTH 1/4 CORNER OF SECTION 29. A CLOSED MEANDER TRANSIT AND E.D.M. TRAVERSE WAS RUN BETWEEN ALL FOUND CORNERS AND USED FOR PRIMARY CONTROL. A CLOSED MEANDER TRANSIT AND CHAIN TRAVERSE WAS RUN ALONG ALL BLAZED AND POSTED PROPERTY LINES AS SHOWN. OFFSETS WERE COMPUTED FROM THIS MEANDER TRAVERSE TO THE TRUE PROPERTY LINE. THE TRUE PROPERTY LINE WAS MARKED AS NOTED IN LEGEND.

LOCATION OF 1/2" IRON RODS

N. 1/4 COR.		N.W. 1/4 COR.			
NW 29-1	177'	SOUTH (M.M.)	NW 29-15	756'	WEST (M.M.)
NW 29-2	359'	SOUTH (M.M.)	NW 29-16	872'	WEST (M.M.)
NW 29-3	427'	SOUTH (M.M.)	NW 29-17	956'	WEST (M.M.)
NW 29-4	490'	SOUTH (M.M.)	NW 29-18	1162'	WEST (M.M.)
NW 29-5	603'	SOUTH (M.M.)	NW 29-19	1362'	WEST (M.M.)
NW 29-6	782'	SOUTH (M.M.)	NW 29-20	1467'	WEST (M.M.)
NW 29-7	943'	SOUTH (M.M.)	NW 29-21	1669'	WEST (M.M.)
NW 29-8	1039'	SOUTH (M.M.)	NW 29-22	1842'	WEST (M.M.)
NW 29-9	1200'	SOUTH (M.M.)	NW 29-23	1968'	WEST (M.M.)
C.N. 1/16 COR.	1367'	SOUTH (M.M.)	NW 29-24	2153'	WEST (M.M.)
NW 29-10	171'	WEST (M.M.)	NW 29-25	2212'	WEST (M.M.)
NW 29-11	330'	WEST (M.M.)	NW 29-26	2386'	WEST (M.M.)
NW 29-12	414'	WEST (M.M.)	NW 29-27	2495'	WEST (M.M.)
NW 29-13	458'	WEST (M.M.)	NW 29-28	2634'	WEST (M.M.)
NW 29-14	610'	WEST (M.M.)	NW 29-29	2772'	WEST
NW 29-15			N. 1/16 COR.		

S.E. SECTION CORNER

CORNER FALLS IN SMITH RIVER ROAD.
 SET TEMPORARY POINT FROM REFERENCE MONUMENTS.
 FD. 1953 G.L.O. BRASS CAP R.M. (N44° 53' 45" E, 59.04')
 1953 G.L.O. BRASS CAP R.M. (S44° 53' 45" W, 59.04')
 37" FIR , S49 1/2°W , 54.5' (SCAR VIS.) , 1953 B.T.
 40" FIR , N6°W , 115.5' (SCAR VIS.) , 1953 B.T.
 49" FIR , S73 1/2°E , 70.0' (SCAR VIS.) , 1953 B.T.
 49" FIR , N84 1/2°E , 84.7' (SCAR VIS.) , NO RECORD
 54" FIR , N44 1/2°E , 80.4' (SCAR VIS.) , 1953 B.T.

REGISTERED
 PROFESSIONAL
 LAND SURVEYOR
 Lea Roberts
 C.D. ROBERTS
 1039

MAP FILE 1125-24