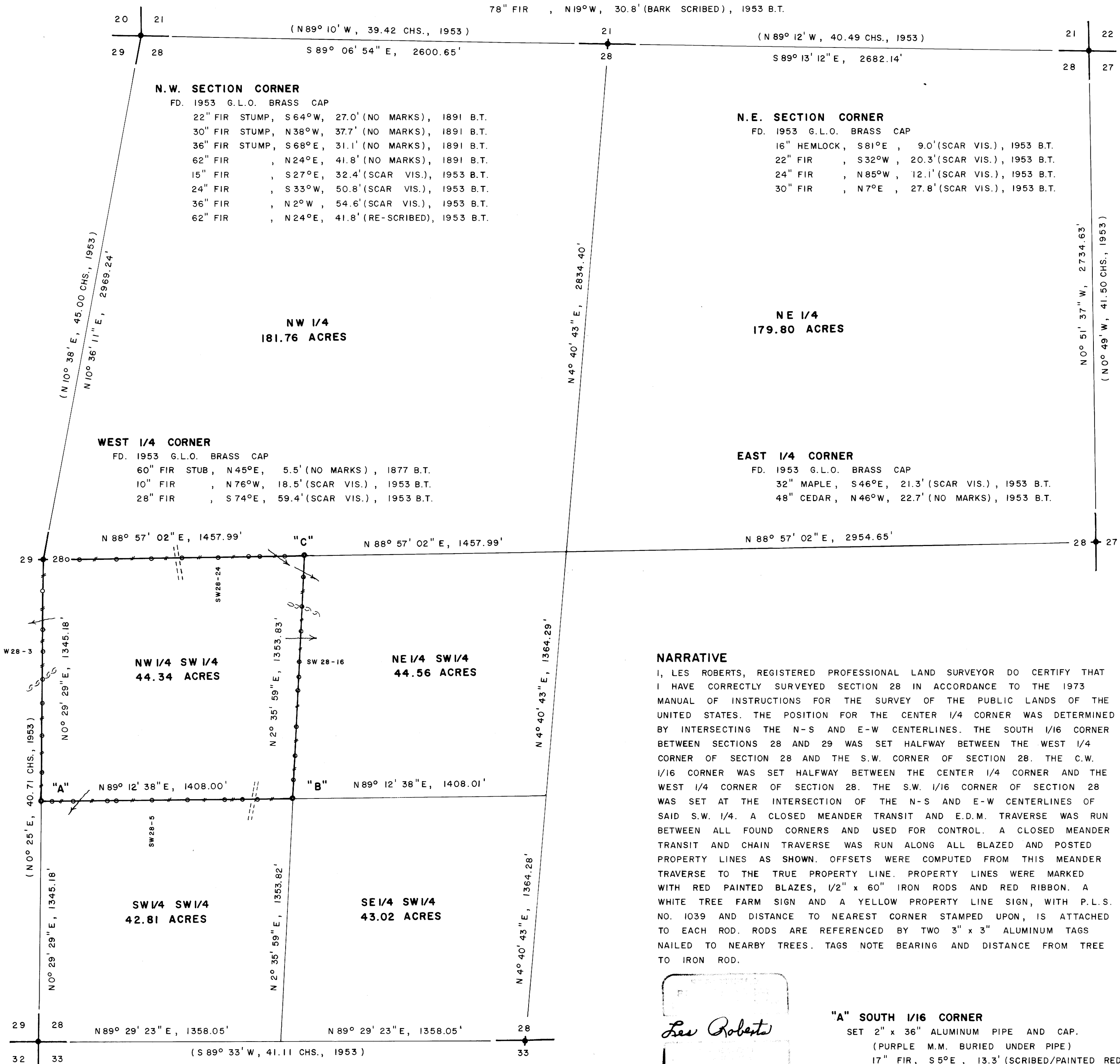


FILED  
RECEIVED  
JH

**NORTH 1/4 CORNER**  
FD. 1953 G.L.O. BRASS CAP

30" ALDER, N86°E, 42.9' (NO MARKS), 1891 B.T.  
72" MAPLE, S70°W, 27.6' (NO MARKS), 1891 B.T.  
78" FIR, N19°W, 30.8' (BARK SCRIBED), 1953 B.T.



**N.E. SECTION CORNER**

FD. 1953 G.L.O. BRASS CAP  
16" HEMLOCK, S81°E, 9.0' (SCAR VIS.), 1953 B.T.  
22" FIR, S32°W, 20.3' (SCAR VIS.), 1953 B.T.  
24" FIR, N85°W, 12.1' (SCAR VIS.), 1953 B.T.  
30" FIR, N7°E, 27.8' (SCAR VIS.), 1953 B.T.

**EAST 1/4 CORNER**

FD. 1953 G.L.O. BRASS CAP  
32" MAPLE, S46°E, 21.3' (SCAR VIS.), 1953 B.T.  
48" CEDAR, N46°W, 22.7' (NO MARKS), 1953 B.T.

**NARRATIVE**

I, LES ROBERTS, REGISTERED PROFESSIONAL LAND SURVEYOR DO CERTIFY THAT I HAVE CORRECTLY SURVEYED SECTION 28 IN ACCORDANCE TO THE 1973 MANUAL OF INSTRUCTIONS FOR THE SURVEY OF THE PUBLIC LANDS OF THE UNITED STATES. THE POSITION FOR THE CENTER 1/4 CORNER WAS DETERMINED BY INTERSECTING THE N-S AND E-W CENTERLINES. THE SOUTH 1/16 CORNER BETWEEN SECTIONS 28 AND 29 WAS SET HALFWAY BETWEEN THE WEST 1/4 CORNER OF SECTION 28 AND THE S.W. CORNER OF SECTION 28. THE C.W. 1/16 CORNER WAS SET HALFWAY BETWEEN THE CENTER 1/4 CORNER AND THE WEST 1/4 CORNER OF SECTION 28. THE S.W. 1/16 CORNER OF SECTION 28 WAS SET AT THE INTERSECTION OF THE N-S AND E-W CENTERLINES OF SAID S.W. 1/4. A CLOSED MEANDER TRANSIT AND E.D.M. TRAVERSE WAS RUN BETWEEN ALL FOUND CORNERS AND USED FOR CONTROL. A CLOSED MEANDER TRANSIT AND CHAIN TRAVERSE WAS RUN ALONG ALL BLAZED AND POSTED PROPERTY LINES AS SHOWN. OFFSETS WERE COMPUTED FROM THIS MEANDER TRAVERSE TO THE TRUE PROPERTY LINE. PROPERTY LINES WERE MARKED WITH RED PAINTED BLAZES, 1/2" x 60" IRON RODS AND RED RIBBON. A WHITE TREE FARM SIGN AND A YELLOW PROPERTY LINE SIGN, WITH P.L.S. NO. 1039 AND DISTANCE TO NEAREST CORNER STAMPED UPON, IS ATTACHED TO EACH ROD. RODS ARE REFERENCED BY TWO 3" x 3" ALUMINUM TAGS NAILED TO NEARBY TREES. TAGS NOTE BEARING AND DISTANCE FROM TREE TO IRON ROD.

*Les Roberts*  
REGISTERED PROFESSIONAL LAND SURVEYOR  
OREGON

**"A" SOUTH 1/16 CORNER**

SET 2" x 36" ALUMINUM PIPE AND CAP.  
(PURPLE M.M. BURIED UNDER PIPE)  
17" FIR, S5°E, 13.3' (SCRIBED/PAINTED RED)  
23" FIR, N59°W, 45.5' (SCRIBED/PAINTED RED)

**"B" S.W. 1/16 CORNER**

SET 2" x 36" ALUMINUM PIPE AND CAP.  
(PURPLE M.M. BURIED UNDER PIPE)  
19" CEDAR, N19°E, 41.7' (SCRIBED/PAINTED RED)  
23" MAPLE, S46°W, 26.6' (SCRIBED/PAINTED RED)

**LEGEND**

- CORNERS FOUND AND USED FOR CONTROL
- CORNERS SET, 2" ALUMINUM PIPE WITH ALUMINUM CAP. CAPS STAMPED S-T-R, DATE AND P.L.S. NO. 1039.
- LINES MARKED AND BLAZED THIS SURVEY
- ( ) DATA OF RECORD, 1953 G.L.O. SURVEY
- ☉ BASIS OF BEARING, SOLAR OBSERVATION
- ☉ DISTANCE TO BEARING TREES ARE CENTER MEASURE
- ☉ ALL NEW BEARING TREES ARE SCRIBED AND HAVE A BRASS WASHER STAMPED "P.L.S. 1039" NAILED TO LOWER BLAZE. SCRIBED BLAZES ARE PAINTED RED.
- (M.M.) INDICATES LOCATION OF BURIED MAGNETIC MARKERS. MARKERS ARE FLUORESCENT ORANGE IN COLOR AND ARE BURIED, 12" TO 18", BESIDE EACH IRON ROD.
- SCALE 1" = 400'

**LOCATION OF 1/2" IRON RODS**

W. 1/4 COR.		SW 1/16 COR.	
W28-1	179'	SW 28-11	104'
W28-2	390'	SW 28-12	242'
W28-3	508'	SW 28-13	405'
W28-4	668'	SW 28-14	602'
W28-5	800'	SW 28-15	678'
W28-6	982'	SW 28-16	768'
W28-7	1184'	SW 28-17	937'
S. 1/16 COR.	1345'	SW 28-18	1069'
SW 28-1	66'	SW 28-19	1238'
SW 28-2	187'	CW 1/16 COR.	1354'
SW 28-3	368'	SW 28-21	114'
SW 28-4	419'	SW 28-22	249'
SW 28-5	622'	SW 28-23	314'
SW 28-6	821'	SW 28-24	485'
SW 28-7	1023'	SW 28-25	688'
SW 28-8	1129'	SW 28-26	857'
SW 28-9	1202'	SW 28-27	1055'
SW 1/16 COR.	1408'	SW 28-28	1261'
		SW 28-29	1328'
		W. 1/4 COR.	1458'

**"C" C.W. 1/16 CORNER**

SET 2" x 36" ALUMINUM PIPE AND CAP  
(PURPLE M.M. BURIED UNDER PIPE)  
12" CEDAR, S60°W, 19.2' (SCRIBED/PAINTED RED)  
25" FIR, N12°W, 12.6' (SCRIBED/PAINTED RED)

SURVEY OF  
SECTION 28, T20S, R9W, W.M.  
DOUGLAS COUNTY, OREGON  
FOR  
INTERNATIONAL PAPER COMPANY  
BY  
ROBERTS SURVEYING INC.  
29 WEST 29TH STREET  
EUGENE, OREGON 97405  
SEPTEMBER 12, 1983

MAP FILE M95-23

MAP FILE M95-23