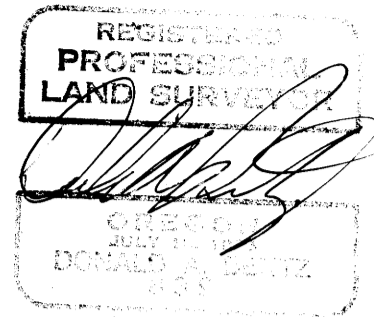


SURVEY IN NW 1/4 OF NW 1/4, SECTION 23, T29S, R6W, W.M.

FOR: W.C. SHIRLEY, III
 BY: DONALD A. BENTZ, L.S.
 P.O. BOX 901
 WINCHESTER, ORE. 97495

COUNTY SURVEYORS FILE DATA
 DO NOT REMOVE FROM OFFICE

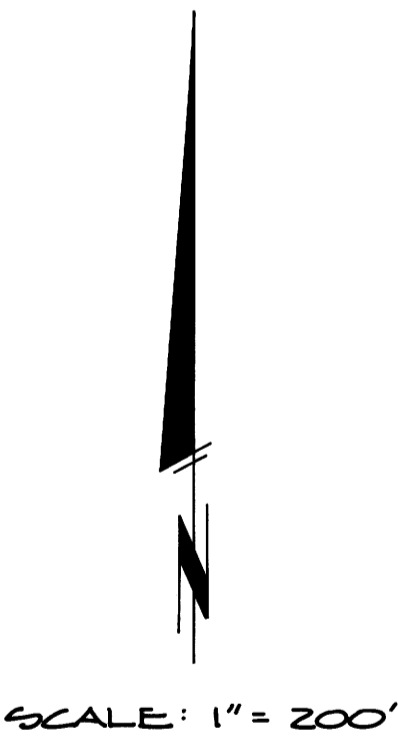
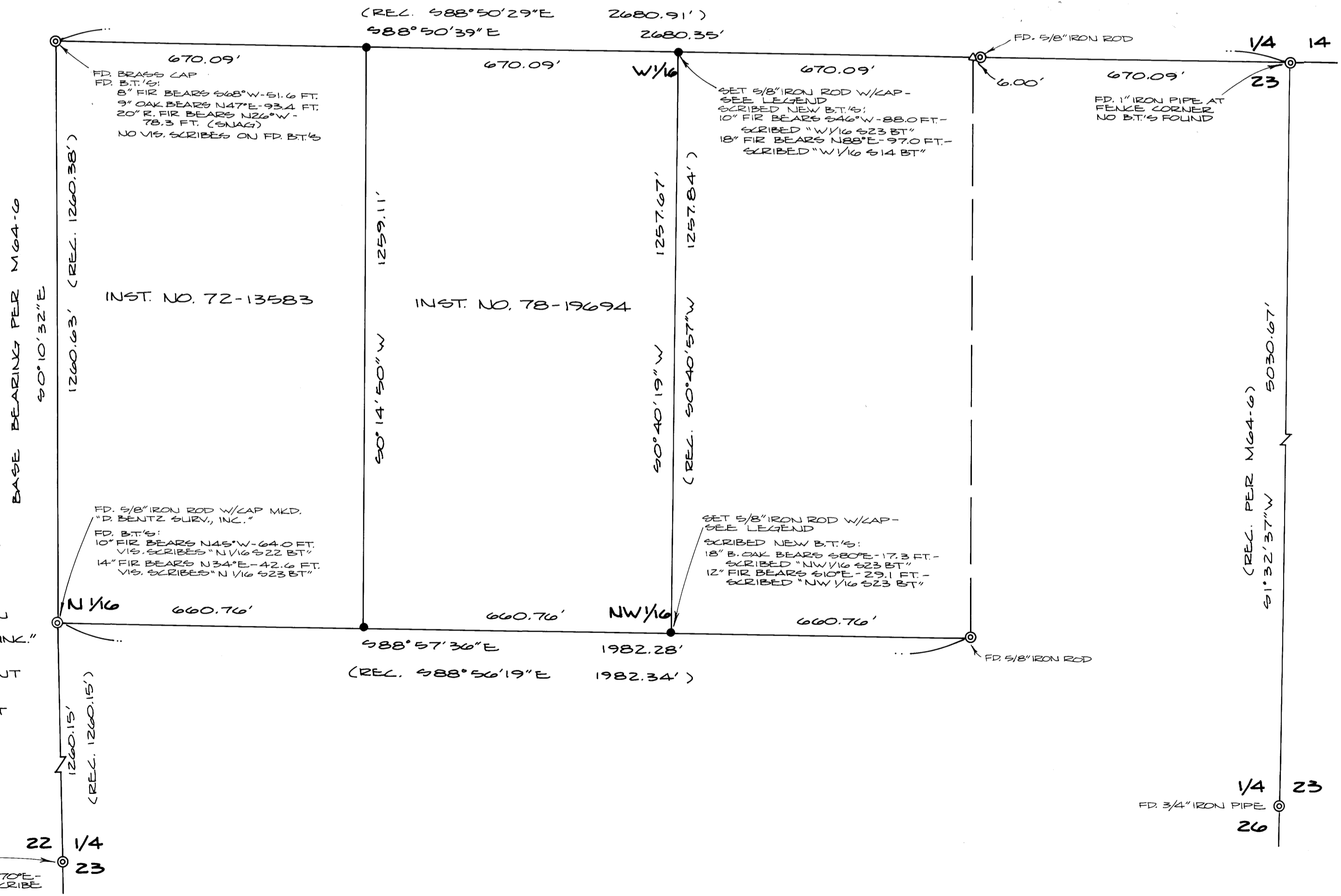


AUGUST 1983

NARRATIVE:

HISTORY OF PRIOR SURVEYS: (REFERENCE SURVEYS):
 JUNE 1971 - VIC McLIND SURVEYED N 1/2 OF WEST LINE OF SEC. 23 (M41-68)
 MAY 1977 - VIC McLIND SUBDIVIDED SEC. 23 (M64-6)
 MAY 1983 - DONALD BENTZ SURVEYED N 1/2 OF WEST LINE OF SEC. 23 (C.S. 58/282)
 FIELD CREW & EQUIPMENT: G. LANG & W. LANG USING A WILD T-1 THEODOLITE
 & RED-1 E.D.M.
 REFERENCE DEEDS: INST. NOS. 73-8374, 76-20529, 79-11864, 78-19694 & 72-13583.
 SURVEY TO ESTABLISH THE W 1/2 OF THE NW 1/4 OF THE NW 1/4, SEC. 23 & THE E 1/2 OF
 THE NW 1/4 OF THE NW 1/4, SEC. 23. SURVEY WAS ACCOMPLISHED BY TYING IN
 NW COR., SEC. 23, W 1/4 COR., SEC. 23, N 1/4 COR., SEC. 23, AND CORNERS SET BY
 VIC McLIND IN PREVIOUS SUBDIVISION OF SEC. 23.

FILED ✓
 RECEIVED ✓
 COUNTY SURVEYORS
 DONALD A. BENTZ



- LEGEND:**
- - SET 5/8" x 30" IRON ROD W/CAP MKD. "D. BENTZ SURV., INC."
 - ⊙ - FOUND MONUMENT AS NOTED
 - △ - COMPUTED POINT

FD. 1" IRON PIPE
 FD. B.T.'S
 11" W. OAK BEARS 67°0'E - 29.3 FT. - NO VIS. SCRIBE

1/4 23
 FD. 3/4" IRON PIPE ⊙
 26

MAY 1986 M 95-2

M 95-2