

**SURVEY TO ESTABLISH PROP. CORNS.
IN LOT 8 CIVIL BEND ORCHARD TRACTS**
IN THE SOUTH HALF OF SEC 22 T28S R6W WM
SURVEYED FOR EDNA GILLESPE
BY AA SURVEYING SERVICE INC. P.O. BOX 130 ROSEBURG, OREGON
OCT. 5, 1983 SCALE 1"=100'

COUNTY SURVEYORS FILE DATA
DO NOT REMOVE FROM OFFICE

FILED
RECEIVED

OCT 11 1983

COUNTY SURVEYOR
DOUGLAS COUNTY, ORE.

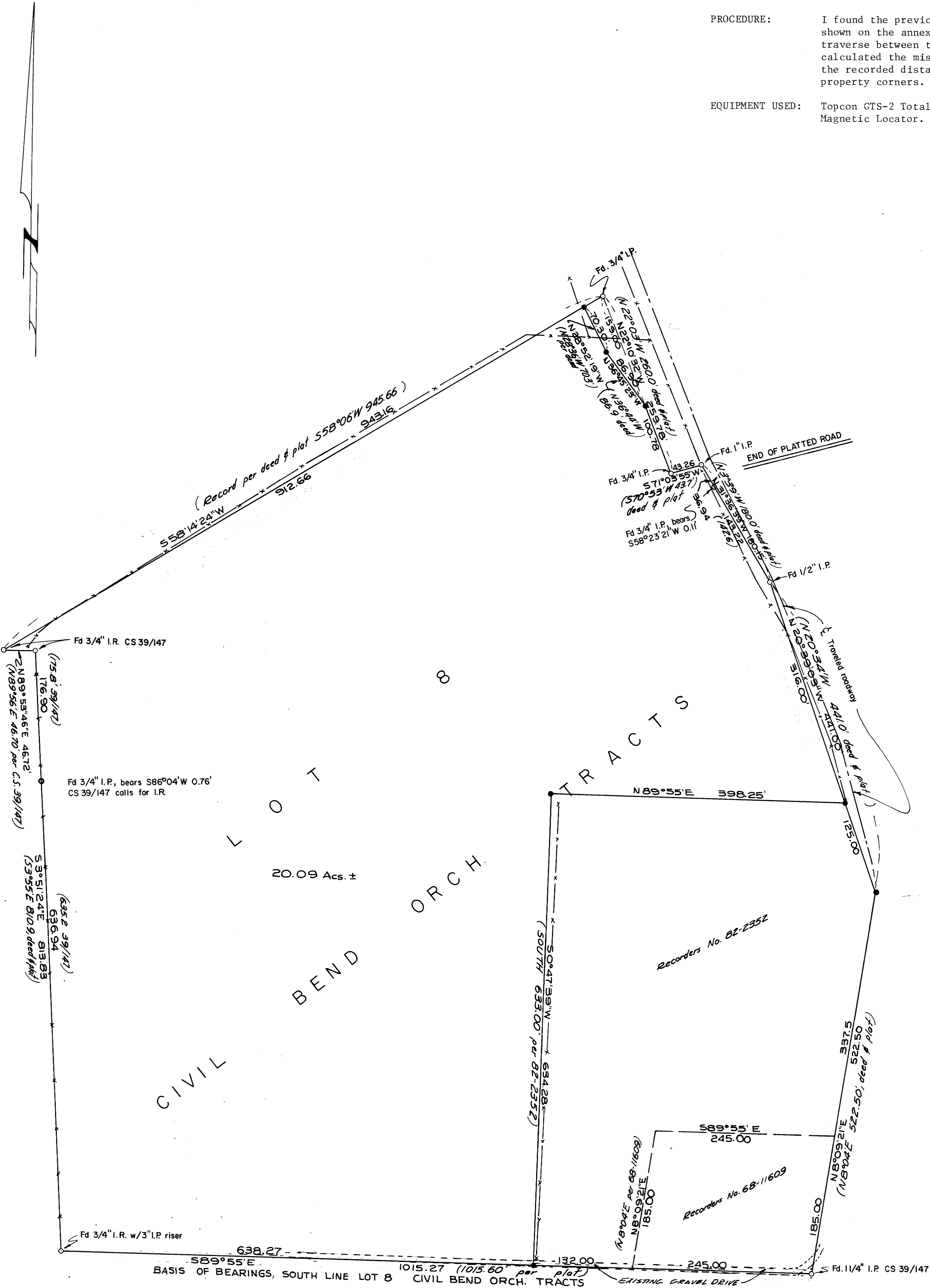
- Set 5/8"x30" I.R. w/plstc. cap mkd. AA Surveying Service Inc.
- Fd mon., as noted

NARRATIVE

PURPOSE: To locate existing monuments and monument all property corners, missing or not previously set, in Lot 8, Civil Bend Orchard Tracts. I also set an aluminum fence post by each corner set.

PROCEDURE: I found the previously monumented corners as shown on the annexed map. I ran a closed loop traverse between the found monuments. I then calculated the missing property corners by holding the recorded distances. I then monumented the property corners.

EQUIPMENT USED: Topcon GTS-2 Total Station and Schonstedt GA-52 Magnetic Locator.



REGISTERED
PROFESSIONAL
LAND SURVEYOR

OREGON
MAY 13, 1980
EUGENE A. BLOOM
492