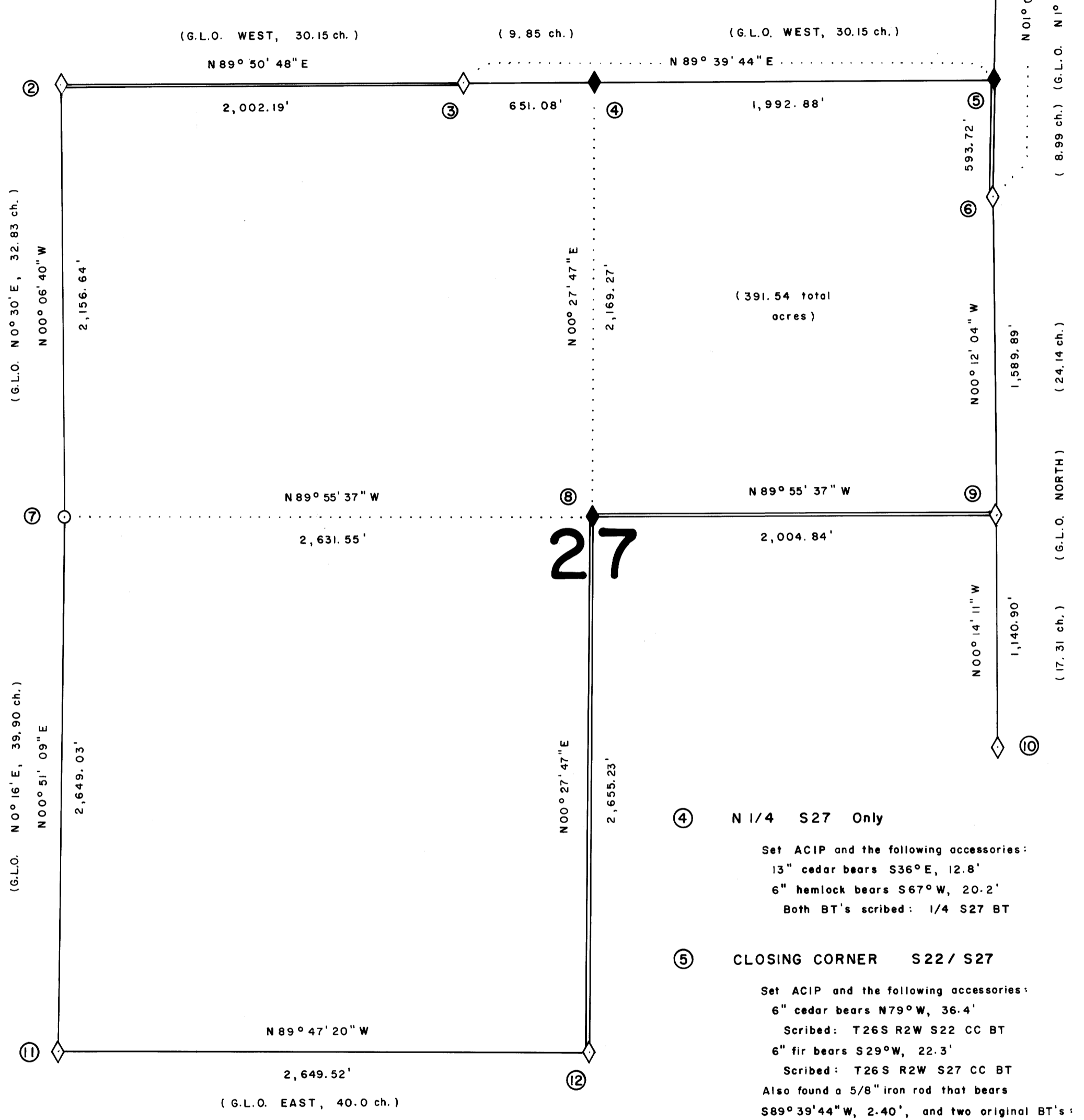
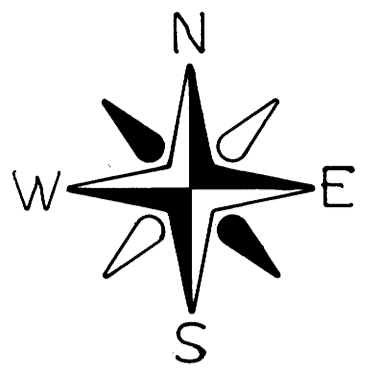


① W 1/4 S23 Only

Found a 1916 BCIP, alongside of which is the granite stone, 16" x 10" x 5", set by William N. Gibb in 1909, and the following accessories: 21" maple bears N89°W, 7.3' (original) 20" hemlock bears S17°E, 29.0' (record = S15°E) (1916) Both BT's have closed faces



⑦ 1/4 CORNER S28/S27

Set ACIP at the exact position of the original 1909 stone, (5" x 15" x 10") found. No markings on stone, which was partially buried alongside the I.P. Also found an original BT: 21" hemlock bears N60°W, 9.2' Scribed: 1/4 S28 BT SET: 9" hemlock bears N56°E, 35.3' Scribed: 1/4 S27 BT

⑧ C1/4 CORNER S27

Set ACIP and the following accessories: 20" fir bears S48°E, 13.9' 8" hemlock bears S64°30'W, 23.7' Both BT's scribed: C1/4 S27 BT

⑨ E1/4 CORNER S27 Only

Found ACIP set in 1981 by P.L.S. 1706, and the following accessories: 6" hemlock bears N62°W, 10.4' (1981) 12" hemlock bears N30°30'W (record = N31°30'W), 20.0' (1981) Both BT's scribed: S27 1/4 BT

⑩ W1/4 CORNER S26 Only

Found a 1916 BCIP and the following accessories: 18" fir bears N38°E (record = N28°E), 11.9' (1916) 11" fir bears S43°30'E, 42.2' (1916) Both BT's have closed faces

⑪ SECTION CORNER S27/S28/S33/S34

Found a 2-1/2" brass cap on a 1-1/2" iron pipe set by Douglas County in 1967, and the following accessories: Original fir, now 27" hemlock stump bears N35°E (record = N29°E), 17.2' Found 2 sets of visible scribing. Original 25" cedar stump bears S74°E (record = S78°E), 13.2' Found 2 sets of visible scribing. Original 5" fir, now cedar, down and scattered. Original 18" cedar down, and out of position. Found visible scribing. 10" hemlock bears S42°W (record = S46°W), 7.8'. Closed face. (1967) 10" hemlock bears N67°W, 10.0'. Scribing visible on partially healed face. (1967)

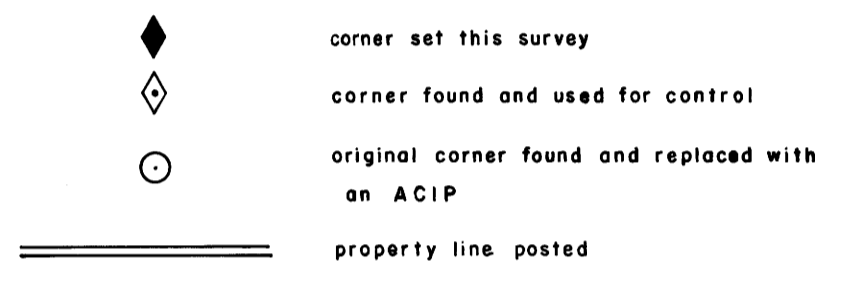
⑫ 1/4 CORNER S27/S34

Found a 1916 BCIP and the following accessories: 15" hemlock stump, 8' tall, bears N17°W, 10.6' (original) Scribed: 1/4 S27 BT Scribe marks on back side of stump also. 15" hemlock stump, 8' tall, bears N51°E, 15.4' (1967) Scribed: 1/4 S27 CS BT 18" hemlock stump, 6' tall, bears S10°E, 4.6' (original) Closed face.

NOTES

- 1) ACIP refers to a 2-1/2" aluminum cap set on a 7/8" x 36" iron pipe.
2) BCIP refers to a 2-1/2" brass cap set on a 1" galvanized iron pipe. The Section Corner for S23/S26, and the Closing Corner for S27/S28 have caps attached to 2" iron pipes.
3) All monuments set are stamped according to the descriptions given in the 1973 B.L.M. Manual of Surveying Instructions, Chapter IV. In addition, each monument set, is stamped PLS 1988.
4) All bearings to corner accessories were taken with a hand compass. Mean magnetic variation = 15°45'E.
5) Distances to bearing trees are measured to the side and center of the tree, one foot above the root crown.
6) This survey was run with a Topcon GTS-2, and an AGA 76 Geodimeter.

LEGEND



SCALE: 1" = 500'

SURVEY NARRATIVE

This survey was conducted to establish the property line for Champion International Corporation, in Section 27, T26S, R2W, W.M., Douglas County, Oregon. Basis of bearing was obtained from a sunshot taken near the S1/4 Corner Sec. 27. Section 27 was originally surveyed by William N. Gibb, in 1909. A corrective survey of a portion of the subdivisional lines in the township was executed by Fred Mensch, in 1916. A revision of the corrective survey was also made by Fred Mensch, in 1918. Controlling corners found, were the original monuments set by Gibb and Mensch, with two exceptions. The E1/4 Corner Sec. 27, was set by P.L.S. 1706 in 1981, and the S.W. Corner of Sec. 27 was reset in its original position by Douglas County in 1967. The position of the perpetuated Closing Corner between Sec. 22 and Sec. 27 was rejected, and a new monument placed at the intersection of the prolonged closing line and the line between the Section Corner of Sec. 23 and Sec. 26, and the W1/4 Sec. 23 only. The N1/4 Sec. 27 only, was placed by single proportionate measure, all error being placed to the East. In order to verify the position of the Closing Corner for Sec. 27 and Sec. 28, the S.W. Corner Sec. 22, and its accessories, were searched for. The brass cap and completely exposed iron pipe was found propped against a stump. However, its true position could not be verified and the corner was considered lost. The position of the E1/4 Sec. 27 was checked by tying into the W1/4 Sec. 26 and the Section Corner of Sec. 23 and Sec. 26. The information was compared to that on a plat of Sec. 26, T26S, R2W, W.M., on file in the Douglas County Surveyor's Office. The C1/4 Sec. 27 was set at the intersection of lines running between opposite 1/4 Corners. All traverses run were closed loops, with a minimum acceptable error of closure of one part in 5000. Property lines were posted with 5' steel fence posts with attached "Champion" tags. Line was also blazed and flagged.

RONALD G. GEISLER Oregon P.L.S. 1988 P.O. Box 1328 Roseburg, Oregon 97470

SURVEY OF SEC. 27, T26S, R2W, W.M. DOUGLAS COUNTY, OREGON

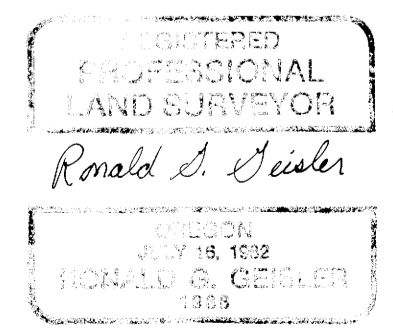
BY

CHAMPION INTERNATIONAL CORPORATION

JUNE - AUGUST 1983

R.G.G.

COUNTY SURVEYORS FILE DAT DO NOT REMOVE FROM OFFICE



② CLOSING CORNER S27/S28

Found a 1918 BCIP and the following accessories: 10" fir bears S86-1/2°E, 25.8' (1967) 20" fir bears S12°W, 9.8' (record = 9.2') (original) Both BT's have closed faces

③ S1/4 S22 Only

Found a 1918 BCIP and the following accessories: 11" hemlock bears N29°W, 21.7' closed face (1967) 21" cedar bears N87°E, 43.9' (record = 44.9') closed face (1967) 38" rotten cedar snag bears N20°E, 27.6' (original) (record = N15°E, 26.4') rotted face Rotted root wad at position of original N.W. B.T.

④ N1/4 S27 Only

Set ACIP and the following accessories: 13" cedar bears S36°E, 12.8' 6" hemlock bears S67°W, 20.2' Both BT's scribed: 1/4 S27 BT

⑤ CLOSING CORNER S22/S27

Set ACIP and the following accessories: 6" cedar bears N79°W, 36.4' Scribed: T26S R2W S22 CC BT 6" fir bears S29°W, 22.3' Scribed: T26S R2W S27 CC BT Also found a 5/8" iron rod that bears S89°39'44"W, 2.40', and two original BT's: 44" fir stump bears N30°15'W, 11.2' closed face 14" rotten hemlock stump bears S50°W, 37.2' Scribed: T26S R2W S27 CC BT

⑥ SECTION CORNER S23/S26

Found a 1918 BCIP and the following accessories: 20" fir snag bears N43°E, 7.3' (original) closed face 9" fir bears N55°E, 13.7' (1967) closed face 11" hemlock bears S38°E, 3.2' (1967) Scribing visible in partially open face