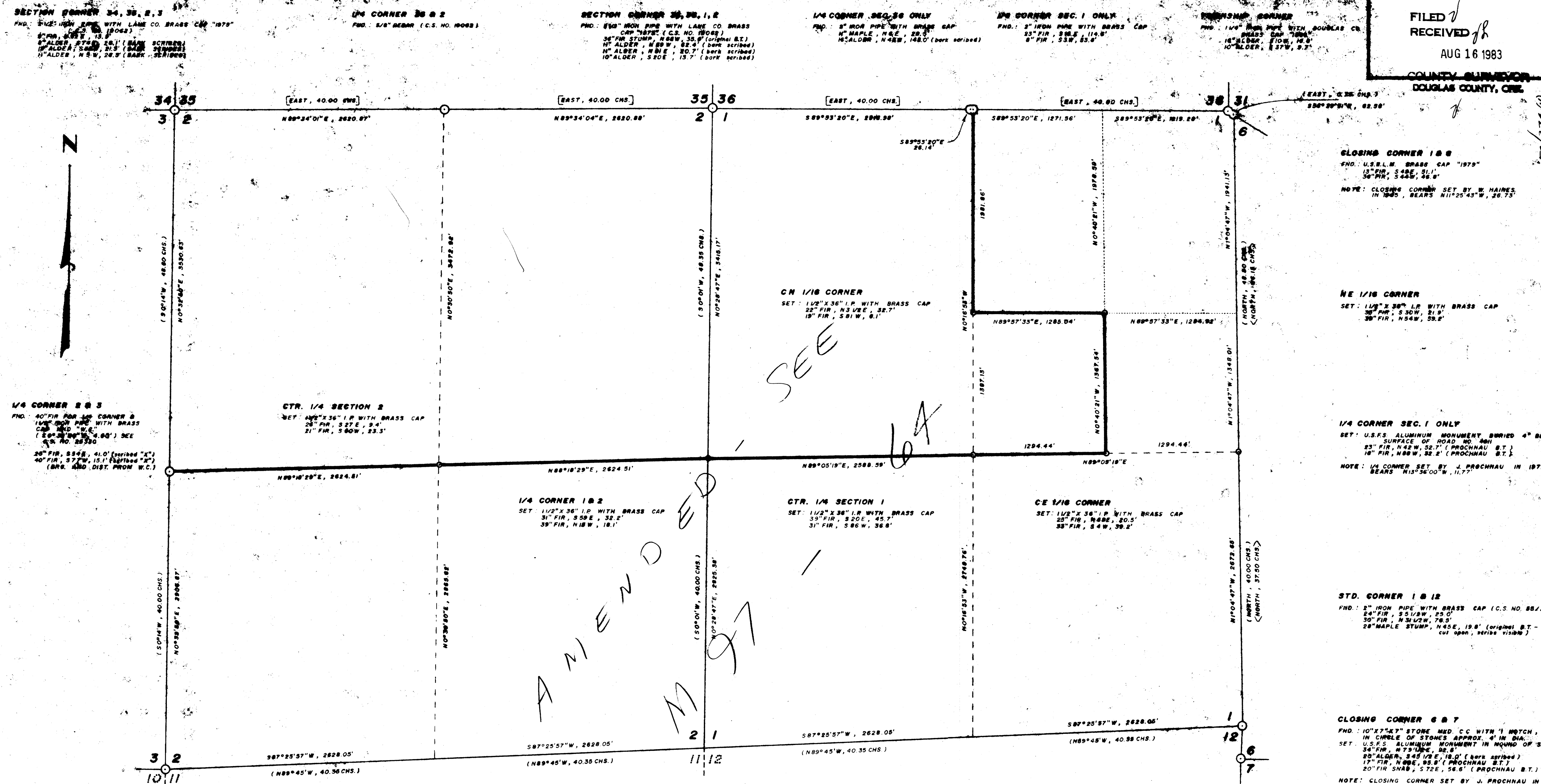


FILED
RECEIVED
AUG 16 1983

COUNTY SURVEYOR
DOUGLAS COUNTY, ORE.



SECTION CORNER 34, 35, 2, 3
 FND: 2" IRON PIPE WITH LANE CO. BRASS CAP "1979"
 8" FIR, 30.5', 15.1'
 8" ALDER, 27.5', 13.8' (bark scribed)
 10" ALDER, 25.5', 12.8' (bark scribed)
 10" ALDER, N 8 W, 26.5' (bark scribed)

1/4 CORNER 35 & 2
 FND: 1/2" BEAR (C.S. NO. 10022)

SECTION CORNER 35, 36, 1, 2
 FND: 1/2" IRON PIPE WITH LANE CO. BRASS CAP "1979" (C.S. NO. 10022)
 34" FIR STUMP, N 80 W, 35.9' (original B.T.)
 10" ALDER, N 80 W, 32.5' (bark scribed)
 10" ALDER, N 81 E, 30.7' (bark scribed)
 10" ALDER, S 20 E, 15.7' (bark scribed)

1/4 CORNER SEC. 36 ONLY
 FND: 2" IRON PIPE WITH BRASS CAP
 10" MAPLE, N 8 E, 29.5'
 10" ALDER, N 8 W, 148.0' (bark scribed)

1/4 CORNER SEC. 1 ONLY
 FND: 2" IRON PIPE WITH BRASS CAP
 23" FIR, 34.6', 17.3'
 8" FIR, 33.9', 16.9'

CLOSING CORNER
 FND: 1/2" IRON PIPE WITH BRASS CAP
 18" ALDER, 21.0', 10.5'
 10" ALDER, 27.0', 13.5'

1/4 CORNER 2 & 3
 FND: 40" FIR FOR 1/4 CORNER & 1/2" IRON PIPE WITH BRASS CAP AND "V.E." (C.S. NO. 25330)
 26" FIR, 33.4', 16.7' (scribed "X")
 40" FIR, 37.7', 18.8' (scribed "W")
 (BRS. AND DIST. FROM W.C.)

CTR. 1/4 SECTION 2
 SET: 1/2" X 3/8" I.P. WITH BRASS CAP
 25" FIR, S 27 E, 9.4'
 21" FIR, S 60 W, 23.3'

1/4 CORNER 1 & 2
 SET: 1 1/2" X 3/8" I.P. WITH BRASS CAP
 31" FIR, S 59 E, 32.2'
 39" FIR, N 18 W, 18.1'

CTR. 1/4 SECTION 1
 SET: 1 1/2" X 3/8" I.P. WITH BRASS CAP
 35" FIR, S 20 E, 45.7'
 31" FIR, S 86 W, 36.8'

CE 1/16 CORNER
 SET: 1 1/2" X 3/8" I.P. WITH BRASS CAP
 25" FIR, N 88 E, 20.5'
 38" FIR, S 4 W, 39.2'

CLOSING CORNER 1 & 6
 FND: U.S.F.S. BRASS CAP "1979"
 15" FIR, S 22 E, 26.6'
 30" FIR, S 22 E, 26.6'
 NOTE: CLOSING CORNER SET BY W. HAINES IN 1925, BEARS N112°43'W, 26.75'

NE 1/16 CORNER
 SET: 1 1/2" X 3/8" I.P. WITH BRASS CAP
 30" FIR, S 30 W, 21.9'
 30" FIR, N 54 W, 59.2'

1/4 CORNER SEC. 1 ONLY
 SET: U.S.F.S. ALUMINUM MONUMENT BURIED 4" BELOW SURFACE OF ROAD NO. 404
 23" FIR, N 42 W, 52.7' (PROCHNAU B.T.)
 18" FIR, N 88 W, 32.2' (PROCHNAU B.T.)
 NOTE: 1/4 CORNER SET BY J. PROCHNAU IN 1971 BEARS N13°36'00"W, 11.77'

STD. CORNER 1 & 12
 FND: 2" IRON PIPE WITH BRASS CAP (C.S. NO. 85/201)
 24" FIR, S 51 W, 25.0'
 30" FIR, N 31 W, 76.5'
 28" MAPLE STUMP, N 45 E, 19.8' (original B.T. - cut open, scribe visible)

CLOSING CORNER 6 & 7
 FND: 10" X 7 1/2" STONE MKD. C.C. WITH 1" NOTCH, IN CIRCLE OF STONES APPROX. 4" IN DIA.
 SET: U.S.F.S. ALUMINUM MONUMENT IN MOUND OF STONE
 34" FIR, N 79 W, 32.8'
 20" ALDER, S 45 E, 18.0' (bark scribed)
 17" FIR, N 80 E, 55.8' (PROCHNAU B.T.)
 20" FIR SNAG, S 72 E, 56.6' (PROCHNAU B.T.)
 NOTE: CLOSING CORNER SET BY J. PROCHNAU IN 1971 BEARS N51°33'26"E, 23.59'

NARRATIVE
 THIS SURVEY WAS MADE IN JANUARY THROUGH MAY, 1983 BY DONALD L. PEEL OF PEEL BAKER LAND SURVEYING INC., 1262 LAWRENCE ST., EUGENE, OREGON. THE PURPOSE OF THIS SURVEY WAS TO LOCATE AND MARK THE SOUTHERLY AND EASTERLY LINES OF THE PROPERTY OWNED BY DAVIDSON INDUSTRIES INC. IN SECTIONS 1 AND 2, T20S, R11W, W.M. KERN K15 AND K14 THEODOLITES AND DIMSIZ EDM. WERE USED TO PERFORM THIS SURVEY. RANDOM TRANSIT TRAVERSES WITH A MINIMUM ERROR OF CLOSURE OF 1/5000' WERE RUN FOR CONTROL. BEARINGS WERE BASED ON A SOLAR OBSERVATION. OFFSETS TO THE TRUE PROPERTY LINE WERE CALCULATED AND USED TO DETERMINE THE POSITION OF THE TRUE LINE. THE TRUE PROPERTY LINE WAS MARKED IN THE FIELD BY BLAZING TREES (BLAZES PAINTED YELLOW) ON BOTH SIDES OF THE TRUE LINE. THE POSITION OF THE SOUTH 1/4 CORNERS OF SECTIONS 1 AND 2 AND THE SOUTHWEST CORNER OF SECTION 1 WERE DETERMINED (BUT NOT SET) BY SINGLE PROPORTION. THE EAST 1/4 CORNER OF SECTION 1 WAS SET BY SINGLE PROPORTION, BASED ON THE RETURN OF MARTIN'S 1894 RETRACEMENT. THE POSITION OF THE NE 1/16 CORNER ON THE EAST LINE OF SECTION 1 WAS DETERMINED (BUT NOT SET) BY SINGLE PROPORTION, BASED ON TANK'S 1892 SURVEY. THE CENTER 1/4 CORNER OF SECTIONS 1 AND 2 AND THE NE 1/16 CORNER OF SECTION 1 WERE SET AT THE POINT OF INTERSECTION OF NORTH-SOUTH AND EAST-WEST CENTERLINES. THE CN 1/16 AND CE 1/16 CORNERS OF SECTION 1 WERE SET AT PROPORTIONAL DISTANCE. THE EAST 1/4 CORNER OF SECTION 1 WAS MONUMENTED WITH A U.S. FOREST SERVICE ALUMINUM MONUMENT, BURIED 4 INCHES BELOW SURFACE OF ROAD NUMBER 404. ALL OTHER CORNERS SET IN THIS SURVEY WERE MONUMENTED WITH A 1/2" X 3/8" IRON PIPE WITH BRASS CAP.

- BASIS OF BEARING:** SOLAR OBSERVATION
SCALE: 1" = 600'
 DISTANCES TO BEARING TREES ARE CENTER MEASURE AND BEARINGS ARE MAGNETIC, VAR. 20°
- CORNERS FOUND
 - ⊙ CORNERS SET THIS SURVEY
 - BLAZED PROPERTY LINE
 - () G.L.O. BEARING AND DISTANCE - 1892
 - < > G.L.O. BEARING AND DISTANCE - 1894
 - [] G.L.O. BEARING AND DISTANCE - 1889

SURVEY OF
SECTIONS 1 & 2, T20S, R11W, W.M.
LANE & DOUGLAS COUNTIES, OREGON
 FOR
DAVIDSON INDUSTRIES INC.
 BY
PEEL BAKER LAND SURVEYING INC.
 MAY 6, 1983

REGISTERED
 PROFESSIONAL
 LAND SURVEYOR
 Donald L. Peel
 OREGON
 JULY 9, 1988
 DONALD L. PEEL
 752

MAP FILE M-24-64

CLB No. 52122 (6)
 MAP FILE M-24-64

M 94-64

PEEL BAKER LAND SURVEYING, INC.

1262 Lawrence Street, Suite 4
EUGENE, OREGON 97401
Telephone: (503) 343-7243

Home Telephones:
Don Peel, PLS 344-1828
Dan Baker 484-2734

June 3, 1983

Ms. Virginia Laugen
Douglas County Surveyors Office
Justice Hall--Room 205
Roseburg, OR 97470

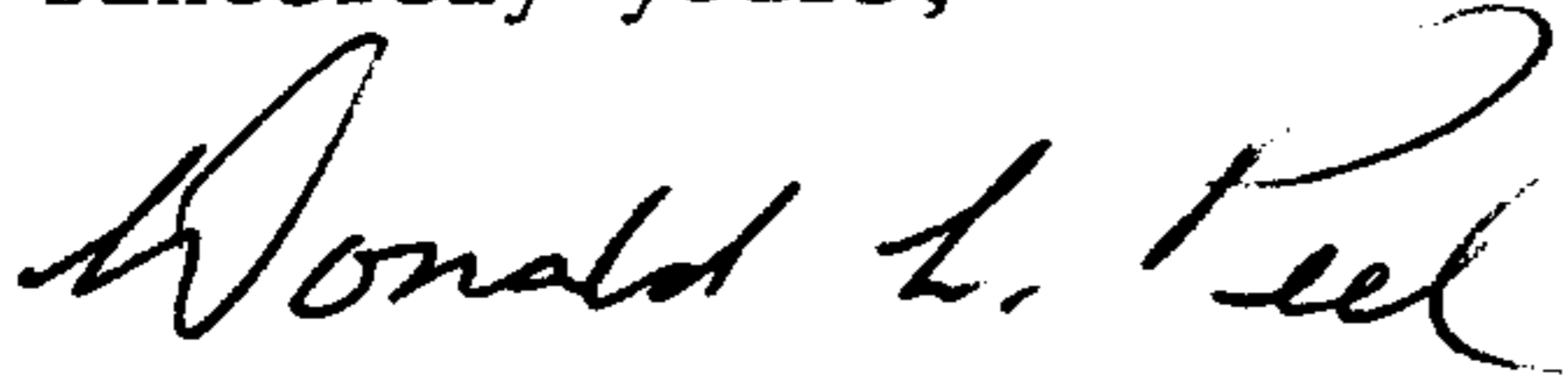
SUBJECT: Survey in Sections 1 & 2, T20S, R11W, W.M.

Dear Ms. Laugen:

In regards to the copy of the survey plat I mailed to you on May 21, 1983, it was not my intention to file said survey with Douglas County. The copy was merely a courtesy gesture, perhaps aiding you in your corner indexing. The original Mylar plat had been filed with Lane County (the county in which subject property was located). Should the Douglas County surveyor desire a Mylar copy of said plat, perhaps he might make some kind of arrangement with the Lane County surveyor to obtain one. Once a plat is filed in Lane County, it cannot be removed from the surveyor's office.

As for the "set" monuments, besides the standard markings "as per the manual," each monument was stamped "PLS 752."

Sincerely yours,



Donald L. Peel, PLS

FILED ✓
RECEIVED ✓
AUG 16 1983
COUNTY SURVEYOR
DOUGLAS COUNTY, ORE.
✓

2A
2. & File No. 58/274 (N)



COUNTY OF DOUGLAS

OFFICE OF THE SURVEYOR
ROOM 205 -- JUSTICE BUILDING
ROSEBURG, OREGON 97470

MEMO

TO: Donald L. Peel, Peel Baker Land Surveying

FROM: Francis L. "Fritz" Ingram, Douglas County Surveyor *FLL*

RE: Your survey for Davidson Industries

DATE: August 16, 1983

Thank you for submitting the survey for Davidson Industries for filing. We have reviewed the survey and find it in compliance with O.R.S. 209.250, and have filed it.

In reviewing the survey, however, it is our opinion that the procedure for locating the corner common to Sections 1, 2, 11 and 12 and therefore the procedure for setting the 1/4 corner common to Sections 1 and 2 is not according to the manual. We consulted with BLM, and they agreed that the section corner should have been set by the three-point method instead of single proportioning.

It is not our function to challenge your surveying methods, but we raise the question as a professional courtesy in case there really is a problem that might affect you and your client with regard to the location of boundary lines.

G.S. File No. 58/274(N) *ad*