

COUNTY SURVEYORS FILE DATA
DO NOT REMOVE FROM OFFICE

Resurvey and Subdivision of Section 12, T 25 S, R 8 W, W. M., Oregon

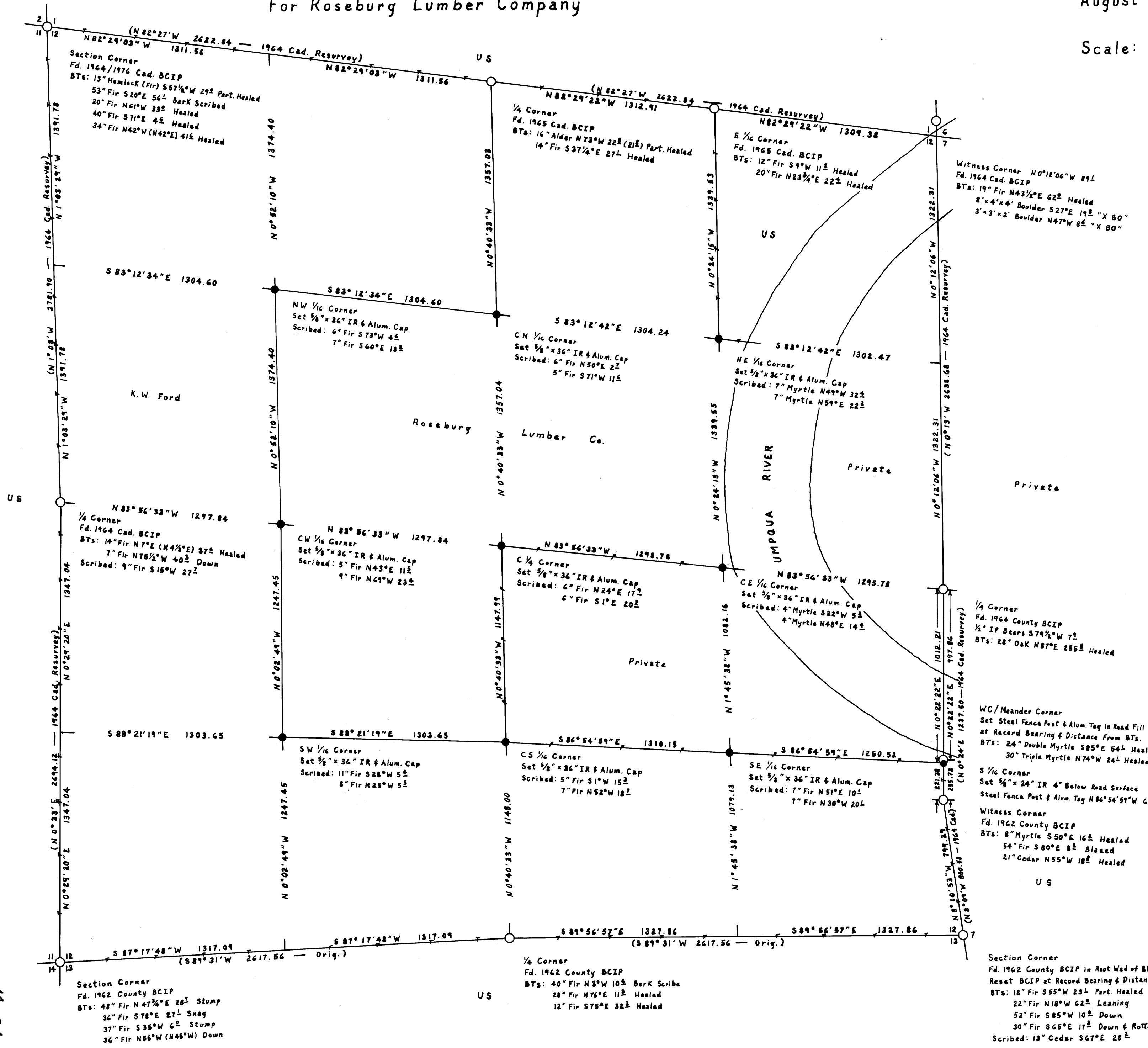
For Roseburg Lumber Company

August 10, 1983

Scale: 1" = 400'

FILED
RECEIVED
AUG 16 1983
COUNTY SURVEYOR
DEPT. OF COUNTY CLERK

M 94-63



Legend

- Corner Found
- Corner Set (Alum. Caps stamped RLS 498)
- () Record Data
- Section or Property Line
- Line Referenced to Alum. Tags
- Line Marked With Steel Fence Posts

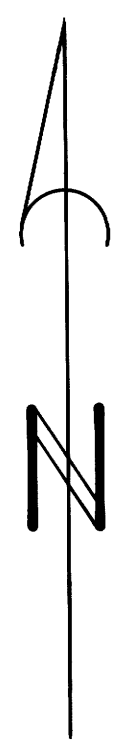
I ran a closed traverse in Section 12 using a Jena 1 second theodolite and a Mac 1E EDM. I achieved a precision of 1:18,177 on the exterior traverse and 1:10,875 on the interior. I adjusted the traverses by the Crandall method and set the corners by standard subdivision procedure based on the location of the existing corners.

Howard W. Johnstone P.O. Box 1088 Roseburg, Oregon

REGISTERED PROFESSIONAL LAND SURVEYOR

Howard W. Johnstone

OREGON
MAY 15, 1960
HOWARD W. JOHNSTONE
498



Bearing Based on Solar Observation

M 94-63