

**NORTH 1/4 CORNER SECTION 2 ONLY**

FD. 1952 G.L.O. BRASS CAP

54" FIR, S 50°E, 79.4' (SCAR VIS.), 1952 B.T.

70" FIR, S 14 1/2°E (RECORD S 14 1/2°W), 90.2' (SCAR VIS.),  
1952 B.T.

**SOUTH 1/4 CORNER SECTION 35 ONLY**

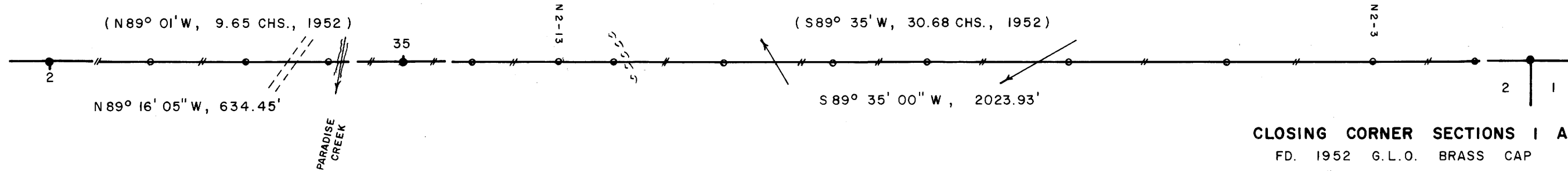
FD. 1952 G.L.O. BRASS CAP

12" YEW, S 53°E, 18.7' (SCRIBE VIS.), 1881 B.T.

14" HEMLOCK STUMP, N 58°E, 53.4' (SCRIBE VIS.), 1952 B.T.

26" FIR, N 2°W, 56.5' (SCAR VIS.), 1952 B.T.

FILED ✓  
RECEIVED ✓  
MAY 5 1983  
COUNTY SURVEYOR  
DOUGLAS COUNTY, OREGON  
✓



REGISTERED  
PROFESSIONAL  
LAND SURVEYOR  
*Les Roberts*  
OREGON  
L. O. ROBERTS  
1039

**LOCATION  
OF 1/2" IRON RODS**

CLOS. COR.	Distance	Direction
N2-2	100'	WEST
N2-3	282'	WEST
N2-5	543'	WEST
N2-7	829'	WEST
N2-8	1087'	WEST
N2-10	1252'	WEST
N2-11	1450'	WEST
N2-12	1644'	WEST
N2-13	1746'	WEST
N2-15	1901'	WEST
S. 1/4 COR.	2024'	WEST
N2-17	137'	WEST
N2-18	283'	WEST
N2-19	456'	WEST
N. 1/4 COR.	634'	WEST

**LEGEND**

- CORNERS FOUND AND USED FOR CONTROL
  - LINES MARKED WITH RED PAINTED BLAZES, 1/2" x 60" IRON RODS AND RED RIBBON. A YELLOW PROPERTY LINE SIGN, WITH P.L.S. NO. 1039 STAMPED UPON, IS ATTACHED TO EACH ROD.
  - ( ) DATA OF RECORD, 1952 G.L.O. SURVEY
- BASIS OF BEARING, EAST 1/2 OF SOUTH LINE SECTION 35
- DISTANCE TO BEARING TREES ARE CENTER MEASURE
- SCALE 1" = 200'

**NARRATIVE**

I, LES ROBERTS, REGISTERED PROFESSIONAL LAND SURVEYOR DO CERTIFY THAT I HAVE CORRECTLY SURVEYED THE NORTH LINE OF SECTION 2 IN ACCORDANCE TO THE 1973 MANUAL OF INSTRUCTIONS FOR THE SURVEY OF THE PUBLIC LANDS OF THE UNITED STATES. NO CORNERS WERE SET ON THIS SURVEY. A CLOSED MEANDER TRANSIT AND E.D.M. TRAVERSE WAS RUN BETWEEN ALL FOUND CORNERS AND USED FOR CONTROL. A CLOSED MEANDER TRANSIT AND CHAIN TRAVERSE WAS RUN ALONG ALL BLAZED AND POSTED PROPERTY LINES AS SHOWN. OFFSETS WERE COMPUTED FROM THIS MEANDER TRAVERSE TO THE TRUE PROPERTY LINE.

**CLOSING CORNER SECTIONS 1 AND 2**

FD. 1952 G.L.O. BRASS CAP

- 8" DOWNED FIR, S 74°E, 29.6' (SCAR VIS.), 1952 B.T.
- 20" FIR STUMP, S 17°W, 35.8' (NO MARKS), 1952 B.T.
- 36" DOWNED FIR, S 67°W, 44.9' (SCRIBE VIS.), 1952 B.T.
- 12" FIR, S 85°W, 62.5' (SCAR VIS.), 1963 B.T.
- 22" MADRONE STUMP, N 34°W, 91.8' (SCRIBE VIS.), 1963 B.T.

**SURVEY OF  
NORTH LINE SEC. 2, T22S, R8W, W.M.  
DOUGLAS COUNTY, OREGON**

**FOR  
INTERNATIONAL PAPER COMPANY**

**BY  
ROBERTS SURVEYING INC.  
29 WEST 29TH STREET  
EUGENE, OREGON 97405**

**MARCH 20, 1983**

**COUNTY SURVEYORS FILE DATA  
DO NOT REMOVE FROM OFFICE**

MAP FILE M. 94-6