

LS-76 W
(N) 58/85

COUNTY SURVEYORS FILE DATA
DO NOT REMOVE FROM OFFICE

f
BS
f

SURVEY TO SET NW 1/16 CORNER IN THE NW 1/4 SEC. 2, T29S, R7W, W.M.

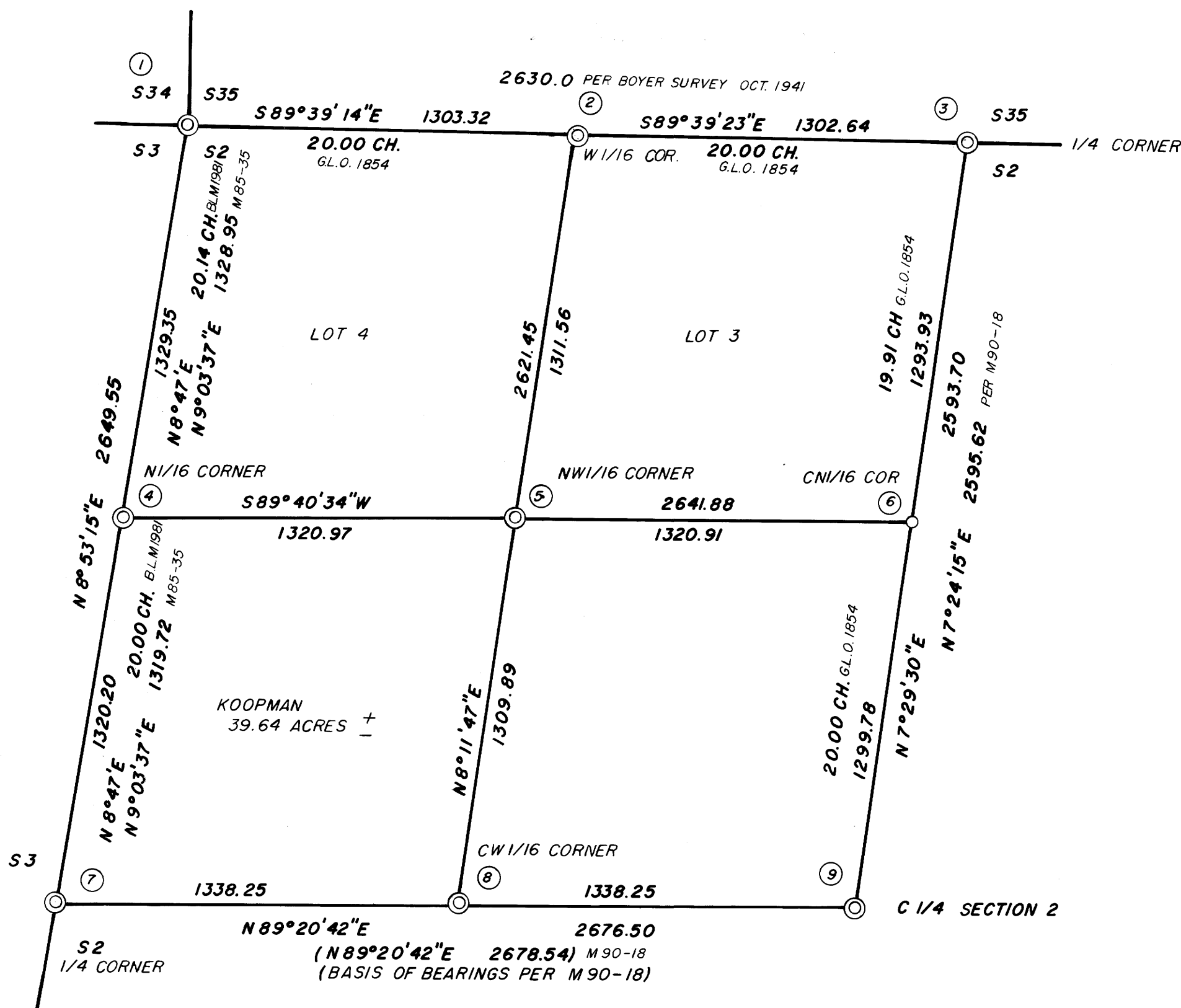
FOR VEL & JOHN KOOPMANS

BY A A SURVEYING SERVICE, INC. P.O. BOX 130 ROSEBURG, OREGON 97470

SCALE 1" = 400'

AUGUST 1983

SEE ACCOMPANYING NARRATIVE C.S. 58/263 (N)



- ① FOUND 2" PIPE WITH 3" BRASS CAP MKD. T28S R7W FROM WHICH BEARS. S34 | S35
A 32" OAK N25°43'W 409.0 S3 | S2
WITH HEALED FACE T29 S
1981
- A 48" OAK WINDFALL N 72°51'E 133.7 ILLEGIBLE SCRIBE MARKS VISIBLE
A 2" PIPE N33°34'W 6.7 WITH A 3" BRASS CAP MKD. RM S34 6.6 TO COR. T28S R7W 1981
A 2" PIPE S45°50'W 6.7 WITH A 3" BRASS CAP MKD. RM S36.6 TO COR. T29S R7W 1981
- ② FOUND 1" PIPE PROTRUDING 6" ABOVE GROUND WITH A 2 1/2" BRASS CAP MKD. T28S R FROM WHICH BEARS S35 | S2
A 16" FIR S76°E 9.1 W1/16 S2 | W
WITH HEALED FACE, THIS TREE T29 S
ALSO CORNER POST FOR FENCE
A 20" DOUG. FIR N3°W 203, SHOWS HEALED FACE
- ③ FOUND 1" IRON PIPE PROTRUDING 18" ABOVE GROUND, WITH 2 1/2" BRASS CAP MKD. COUNTY SURVEYORS OFFICE FROM WHICH BEARS T28S R
A 11" FIR N34°E 2.6, SHOWS HEALED FACE 1/4 S35 | 7
A 21" FIR S43°E 124' SHOWS HEALED FACE S2 | W
1961 T29 S
- ④ FOUND BRASS CAP AND BEARING TREE'S AS RECORDED BY B.L.M. IN 1981
- ⑤ SET 1" X 30" IRON PIPE 18" IN THE GROUND, WITH A 2 1/2" BRASS CAP MKD. T29S R7W FROM WHICH BEARS. NW 1/16 S2
1983 LS 1651
A 12" DOUG. FIR S23°13'W 25.9 MARKED "X" IN BARK, & BLAZED & SCRIBED BT BELOW
A 9" DOUG. FIR S48°46'W 40.7 BLAZED & SCRIBED NW 1/16 S2 BT
- ⑥ CALCULATED BUT NOT SET
- ⑦ FOUND BRASS CAP & BEARING TREES AS FOUND PER M90-18
- ⑧ FOUND 1" IRON PIPE WITH 2 1/2" BRASS CAP FLUSH WITH GROUND MKD. CW 1/16 S2 FROM WHICH BEARS RLS 1651
1983
A 12" OAK N30°30'W 113.64
CW 1/16 S2 BT VISIBLE ON OPEN FACE
A 10" OAK N18°45'E 106.19
CW 1/16 S2 BT VISIBLE ON OPEN FACE
- ⑨ FOUND 5/8" IRON ROD WITH ATTACHED BRASS WASHER MKD. LS 1903 BEARING TREES FOUND AS RECORDED PER M90-18

REGISTERED
PROFESSIONAL
LAND SURVEYOR

Herman A. Pieske

OREGON
JULY 14, 1978
HERMAN A. PIESKE
1651

FILED ✓
RECEIVED BS

AUG 5 1983

VEL AND JOHN KOOPMANS

COUNTY SURVEYOR
DOUGLAS COUNTY, ORE.

August, 1983

See accompanying Map M 94-57

NARRATIVE:

PURPOSE: To set the NW 1/16 corner of section 2, T. 29 S., R. 7 W., W.M.

FINDINGS: The north portion of section 2 has been lotted. The NW corner of the section is perpetuated from original evidence. The N 1/4 corner was re-established at proportionate distance by A. Boyer in 1941. The W 1/4 corner was re-established and the N 1/16 corner established at proportionate distances by G. Baughman in 1980 (M85-35) and were checked by a B.L.M. resurvey in 1981. The section was subdivided and the center 1/4 corner set by R. Kimberly in 1982 (M90-18). I set the center west 1/16 corner in 1983 (CS 58/182)

CONCLUSIONS AND PROCEDURE:

I accepted the corners described above. I calculated the position of the center north 1/16 corner at proportion distance. I then established the position of the NW 1/16 corner and set a monument as shown.

EQUIPMENT: Topcon GTS-2.

REGISTERED
PROFESSIONAL
LAND SURVEYOR

Herman A. Pieske

OREGON
JULY 14, 1978
HERMAN A. PIESKE
1651

AA SURVEYING SERVICE, INC.
P.O. Box 130,
Roseburg, OR 97470
(503) 672-2096

File No. 58/263³(4)