

COUNTY SURVEYORS FILE DATA  
DO NOT REMOVE FROM OFFICE

FILED  
RECEIVED *as*  
JUL 19 1983  
COUNTY CLERK  
ROOSEVELT COUNTY ORE.  
*d*

# SURVEY TO SET LOT CORNERS BLOCK 30, LOTS 14 THRU 24 KINNEY'S IMPROVED PLAT CITY OF ROSEBURG

SITUATED IN THE SE 1/4 SECTION 18, T27S, R5W, W.M.

FOR - JOHN FRASER, STEVE STEVENS, & CRAIG HICKMAN

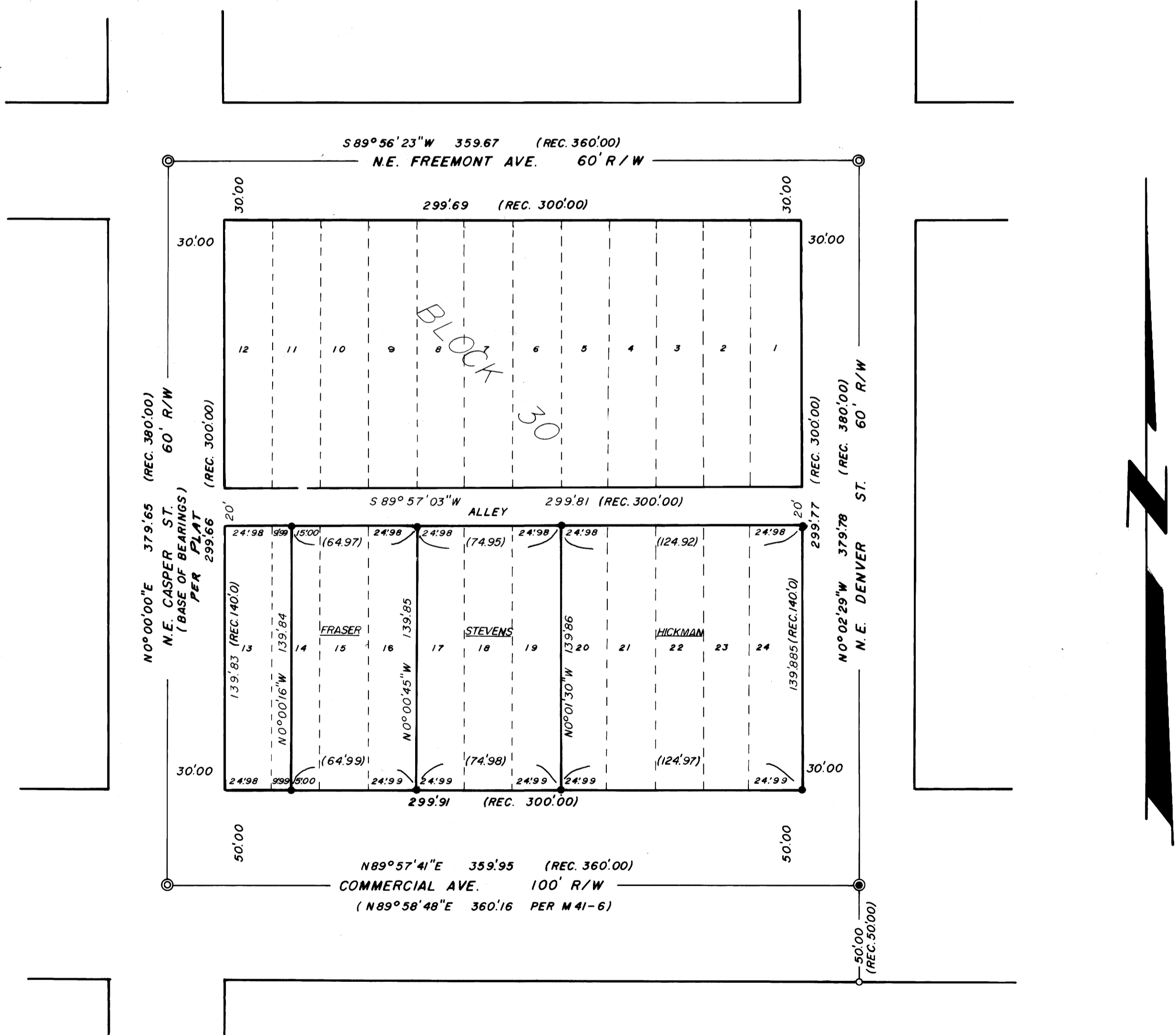
BY - A A SURVEYING SERVICE INC.  
PO. BOX 130 ROSEBURG, OREGON 97470

JULY 1983

SCALE 1" = 50

- ⊙ FOUND STREET MONUMENT SET IN CONCRETE
- ⊙ FOUND 3/4" IRON ROD (NO RECORD)
- FOUND 5/8" IRON ROD (M41-6)
- SET 5/8" X 30" IRON ROD WITH PLASTIC CAP MKD. "AA SURVEYING SERVICE INC."

PURPOSE TO SET LOT CORNERS FROM EXISTING STREET MONUMENTS  
EQUIPMENT USED TOPCON GTS-1 & MAGNETIC PIN LOCATOR



REGISTERED  
PROFESSIONAL  
LAND SURVEYOR

*Herman A. Pieske*

OREGON  
JULY 14, 1978  
HERMAN A. PIESKE  
1651