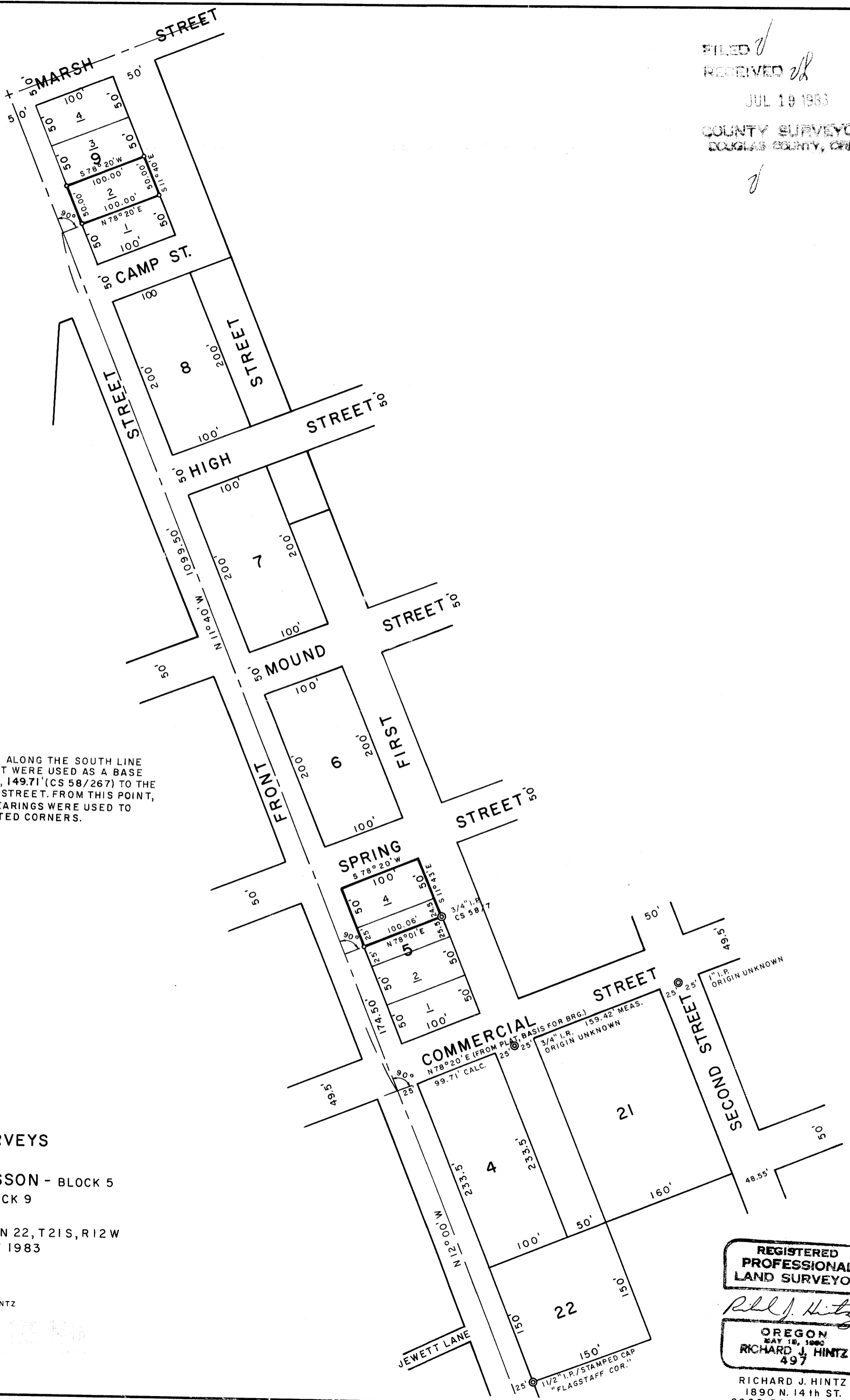
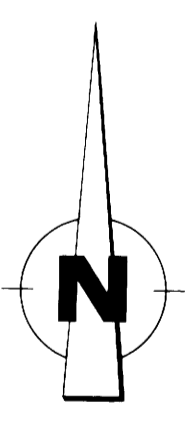


FILED ✓
RECEIVED ✓
JUL 19 1983
COUNTY SURVEYOR
DOUGLAS COUNTY, ORE.
✓



NARRATIVE

THE FOUND MONUMENTS ALONG THE SOUTH LINE OF COMMERCIAL STREET WERE USED AS A BASE LINE; THENCE S 78° 20' W, 149.71' (CS 58/267) TO THE CENTERLINE OF FRONT STREET. FROM THIS POINT, PLAT DISTANCES AND BEARINGS WERE USED TO ESTABLISH THE INDICATED CORNERS.



**PROPERTY SURVEYS
FOR
FRANCES LARSSON - BLOCK 5
JAMES EDD - BLOCK 9
TOWN OF GARDINER
SE 1/4 SECTION 22, T21S, R12W
SCALE 1"=100' JULY 1983**

CORNERS FOUND ©
SET 5/8 x 36" I.R.'S O
STAMPED CAPS, P.L.S. 497 R. J. HINTZ

**REGISTERED
PROFESSIONAL
LAND SURVEYOR**
Richard J. Hintz
OREGON
MAY 18, 1980
RICHARD J. HINTZ
497
RICHARD J. HINTZ
1890 N. 14th ST.
COOS BAY, OREGON