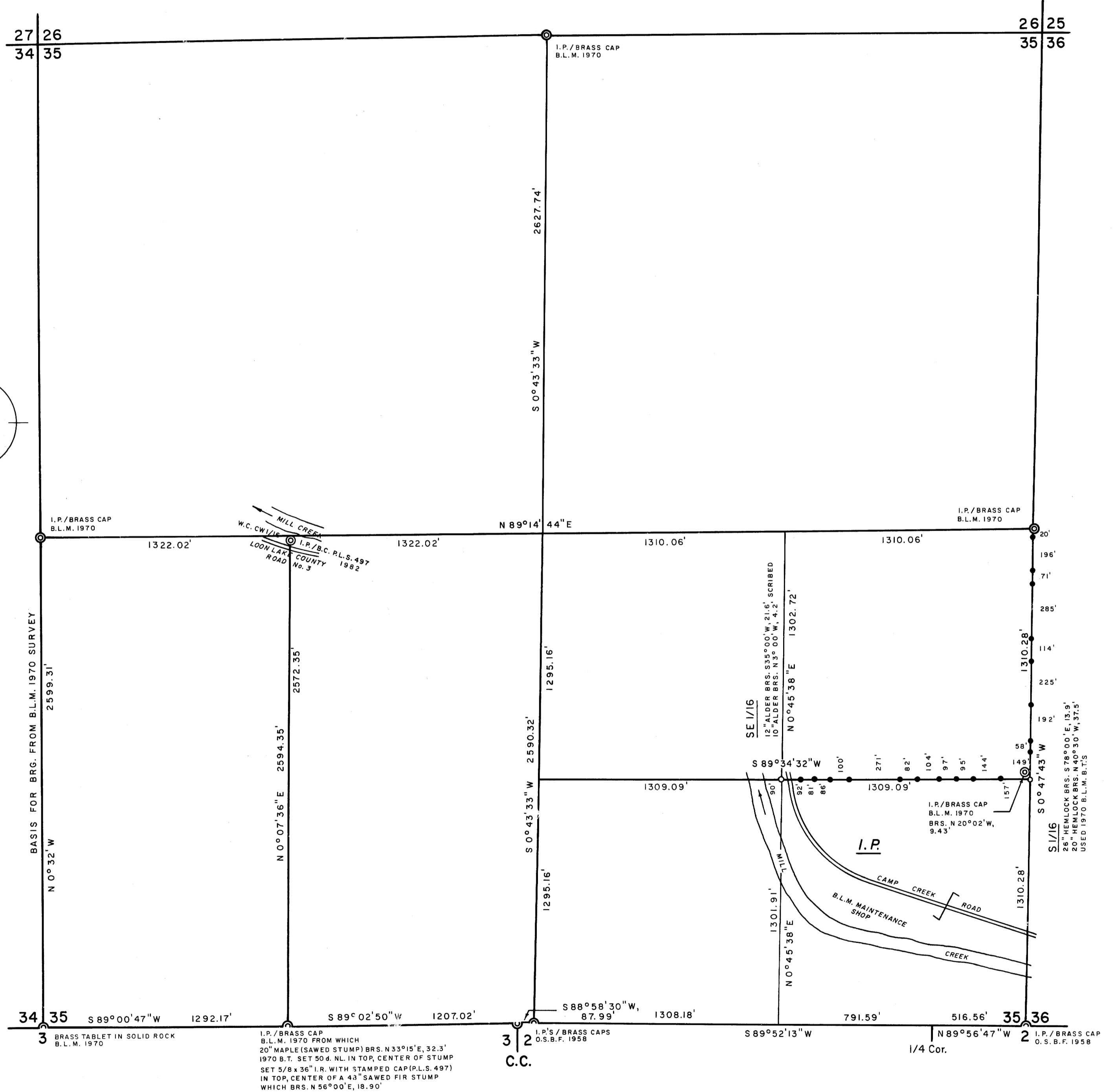
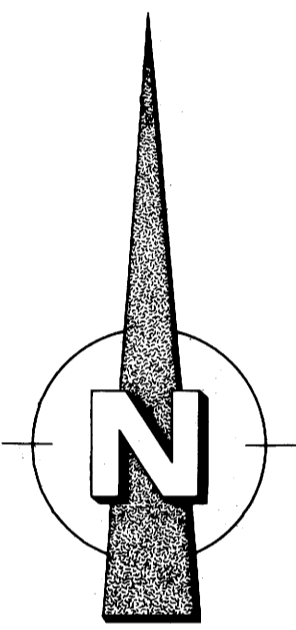


PROPERTY SURVEY FOR INTERNATIONAL PAPER CO.

FILED
RECEIVED
JUL 18 1983
COUNTY SURVEYOR
DOUGLAS COUNTY, ORE

SEC. 35, T22 S, R10 W
SCALE 1" = 400' JUNE 1983



LEGEND

CORNERS FOUND \odot
 SET 1 1/4 x 3/16\" I.P.'S / STAMPED CAPS (P.L.S. 497) \circ
 SET 1/2 x 60\" I.R.'S / ATTACHED ALUMINUM PROPERTY LINE SIGNS

NOTES

- DISTANCE TAKEN TO A 50 d. NAIL IN THE CENTER OF EACH BEARING TREE.
- THIS SURVEY WAS MADE IN ACCORDANCE WITH THE B.L.M. MANUAL OF SURVEY INSTRUCTIONS.
- THE ANGLE POINT ALONG THE EAST 1/2 OF THE SOUTH LINE AT THE NORTH 1/4 CORNER OF SECTION 2 WAS CALCULATED BY APPLYING THE RETURNS OF THE 1970 B.L.M. SURVEY OF N 89°53' W, 516.45' AND S 89°56' W, 2100.12' TO MY INVERSE FROM THE SOUTHEAST SECTION CORNER TO THE SOUTH 1/4 CORNER OF SECTION 35. THE B.L.M.'S DEFLECTION ANGLE OF 00°11', LEFT, WAS HELD FOR THE BEARING ROTATION.

REGISTERED
PROFESSIONAL
LAND SURVEYOR

Richard J. Hintz

OREGON
MAY 18, 1980
RICHARD J. HINTZ
497

RICHARD J. HINTZ
1890 N. 14th ST.
COOS BAY, OREGON