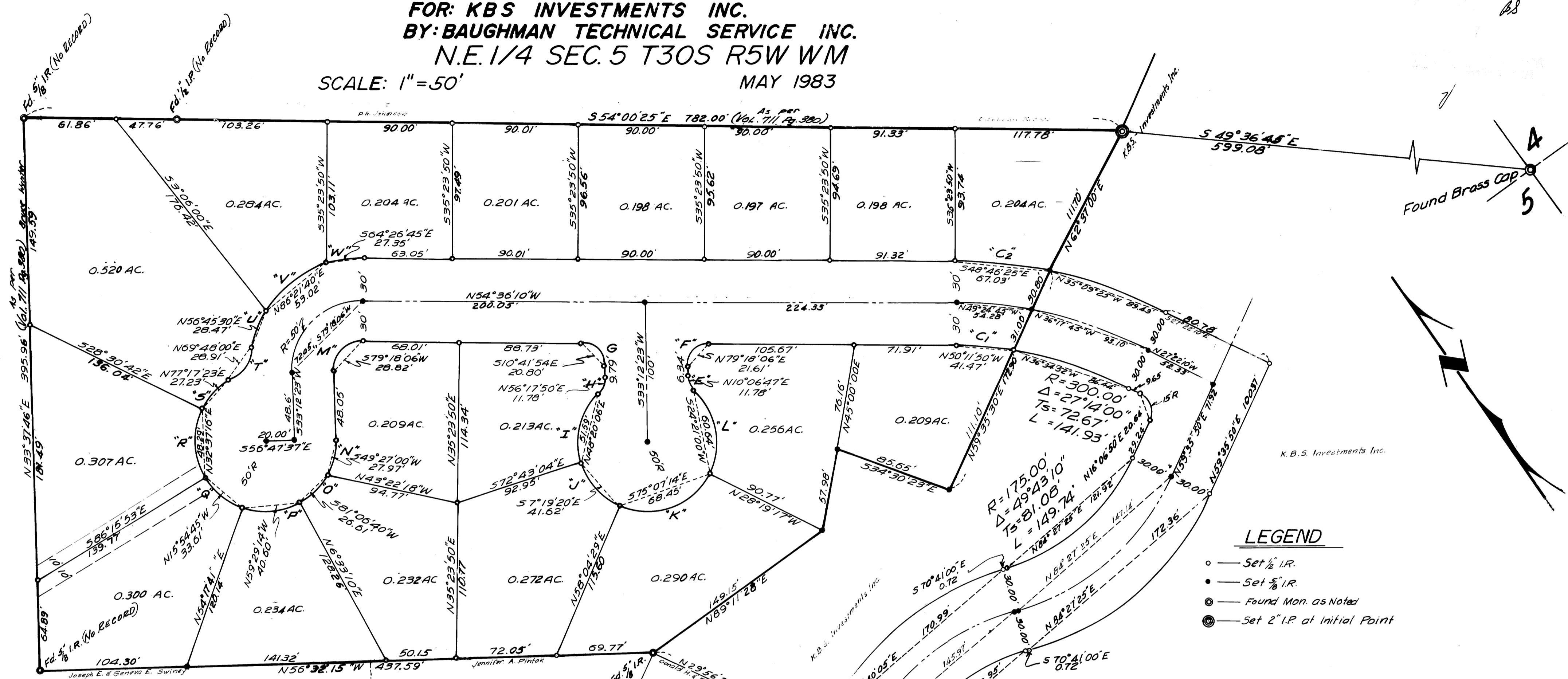


SURVEY FOR PROPERTY MONUMENTS
FOR: K.B.S. INVESTMENTS INC.
BY: BAUGHMAN TECHNICAL SERVICE INC.
N.E. 1/4 SEC. 5 T30S R5W WM
MAY 1983

SCALE: 1" = 50'



LEGEND

- — Set 1/2 I.R.
- — Set 5/8 I.R.
- ⊙ — Found Mon. as Noted
- ⊗ — Set 2" I.R. at Initial Point

<p>"E" R=15.00' Δ=46°10'54" Ts=6.40' L=12.09'</p>	<p>"H" R=15.00' Δ=46°10'54" Ts=6.40' L=12.09'</p>	<p>"K" R=50.00' Δ=86°23'46" Ts=46.95' L=75.39'</p>	<p>"N" R=50.00' Δ=32°29'08" Ts=14.57' L=28.35'</p>	<p>"Q" R=50.00' Δ=39°16'25" Ts=17.84' L=34.27'</p>	<p>"T" R=36.56' Δ=46°34'57" Ts=15.74' L=29.72'</p>	<p>"W" R=80.00' Δ=19°41'02" Ts=13.88' L=27.48'</p>
<p>"F" R=15.00' Δ=92°11'27" Ts=15.58' L=24.14'</p>	<p>"I" R=50.00' Δ=62°06'21" Ts=30.11' L=54.20'</p>	<p>"L" R=50.00' Δ=74°39'23" Ts=38.13' L=65.15'</p>	<p>"O" R=50.00' Δ=17°45'19" Ts=13.80' L=26.93'</p>	<p>"R" R=50.00' Δ=57°45'11" Ts=27.57' L=50.40'</p>	<p>"U" R=80.00' Δ=20°30'00" Ts=14.47' L=28.62'</p>	<p>"Ci" R=270.00' Δ=8°48'36" Ts=20.80' L=41.57'</p>
<p>"G" R=15.00' Δ=87°48'33" Ts=14.44' L=22.99'</p>	<p>"J" R=50.00' Δ=49°12'47" Ts=22.90' L=42.95'</p>	<p>"M" R=20.00' Δ=92°11'27" Ts=20.78' L=32.18'</p>	<p>"P" R=50.00' Δ=47°54'32" Ts=22.61' L=41.81'</p>	<p>"S" R=50.00' Δ=31°36'09" Ts=14.15' L=27.58'</p>	<p>"V" R=80.00' Δ=38°42'18" Ts=28.10' L=54.04'</p>	<p>"C2" R=330.00' Δ=11°39'30" Ts=33.69' L=67.15'</p>

REGISTERED
PROFESSIONAL
LAND SURVEYOR
Glenn S. Baughman
OREGON
1983
GLENN S. BAUGHMAN
536

NOTE: SEE NARRATIVE CS

58/144(W)
M 94-43

58/144(W)
M 94-43

M 94-43

FILED *J*
RECEIVED *BS*

JUL 7 1983

SURVEY FOR PROPERTY MONUMENTS

For: K.B.S. Investments Inc.

By: Baughman Technical Services Inc. COUNTY SURVEYOR
5157 N. Umpqua Highway DOUGLAS COUNTY, ORE.
Roseburg, Ore. 97470 *J*

Date: May 1983

NARRATIVE TO MAP FILE No. M- *94-43*

This survey was made for a subdivision in the N.E. 1/4 of Sec. 5, T.30S., R.5W.W.M., which was approved through its preliminary stages by the various County and State agencies.

All of the points have been set within the tolerances provided for by subdivision laws. The plat has not been finalized because of the lack of financing for streets and utility lines.

The field work was performed by Lester Fanning and Mack Clark, using a T1AE Wild theodolite, 300 ft. steel tape and a H.P. 3805 EDM. The office computation were made on a Wang computer with the final drafting done by George E. Grubb.

REGISTERED
PROFESSIONAL
LAND SURVEYOR

Glenn S. Baughman

OREGON
JULY 14, 1961
GLENN S. BAUGHMAN
536

GLENN No. *58/144-9*