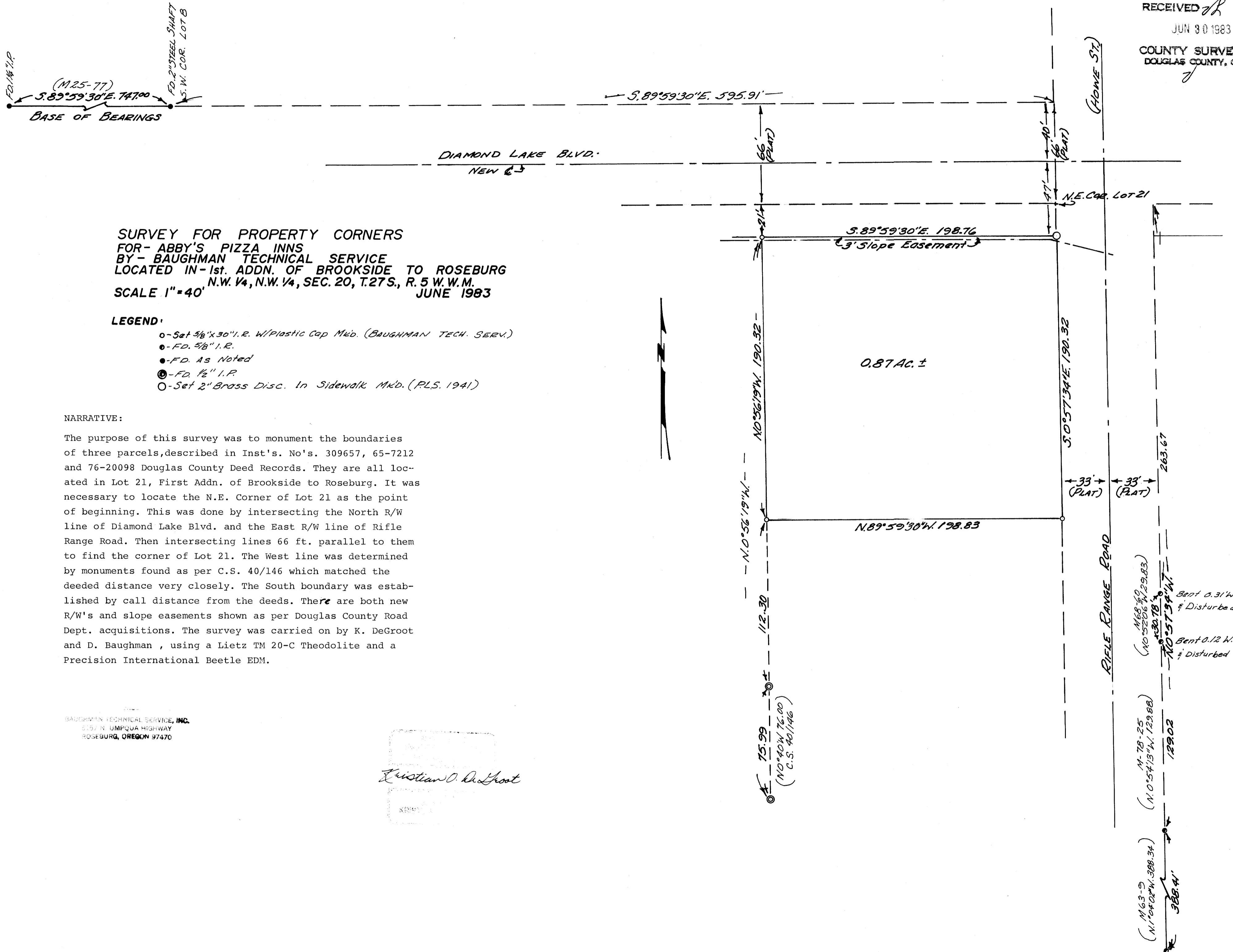


FILED
RECEIVED
JUN 30 1983
COUNTY SURVEYOR
DOUGLAS COUNTY, ORE.



SURVEY FOR PROPERTY CORNERS
FOR - ABBY'S PIZZA INNS
BY - BAUGHMAN TECHNICAL SERVICE
LOCATED IN - 1st. ADDN. OF BROOKSIDE TO ROSEBURG
N.W. 1/4, N.W. 1/4, SEC. 20, T.27 S., R. 5 W.W.M.
SCALE 1" = 40'
JUNE 1983

LEGEND:

- - Set 5/8" x 30" I.R. w/ Plastic Cap Mk'd. (BAUGHMAN TECH. SERV.)
- - F.D. 5/8" I.R.
- - F.D. As Noted
- - F.D. 1/2" I.R.
- - Set 2" Brass Disc. In Sidewalk Mk'd. (P.L.S. 1941)

NARRATIVE:

The purpose of this survey was to monument the boundaries of three parcels, described in Inst's. No's. 309657, 65-7212 and 76-20098 Douglas County Deed Records. They are all located in Lot 21, First Addn. of Brookside to Roseburg. It was necessary to locate the N.E. Corner of Lot 21 as the point of beginning. This was done by intersecting the North R/W line of Diamond Lake Blvd. and the East R/W line of Rifle Range Road. Then intersecting lines 66 ft. parallel to them to find the corner of Lot 21. The West line was determined by monuments found as per C.S. 40/146 which matched the deeded distance very closely. The South boundary was established by call distance from the deeds. There are both new R/W's and slope easements shown as per Douglas County Road Dept. acquisitions. The survey was carried on by K. DeGroot and D. Baughman, using a Lietz TM 20-C Theodolite and a Precision International Beetle EDM.

BAUGHMAN TECHNICAL SERVICE, INC.
5157 N. UMPQUA HIGHWAY
ROSEBURG, OREGON 97470

Christian O. DeGroot

M63-9 (N. 1° 02' 02" W. 388.34)
M68-9 (N. 0° 57' 34" E. 129.83)
M78-25 (N. 0° 54' 13" W. 129.88)
M88-9 (N. 0° 52' 06" W. 129.83)
129.02
388.4'
Bent 0.31' W. of line & Disturbed
Bent 0.12' W. of line & Disturbed