

SURVEY IN
SEC. 26 T.22S, R.4W, W.M.
LANE AND DOUGLAS COUNTIES, OREGON

FOR
WEYERHAEUSER COMPANY
BY
WEYERHAEUSER COMPANY

MAY 16, 1983

COUNTY SURVEYORS FILE DAT.
DO NOT REMOVE FROM OFFICE

NARRATIVE:

THIS SURVEY WAS MADE IN MAY, 1983 BY WEYERHAEUSER COMPANY FOR THE PURPOSE OF LOCATING AND MARKING THE BOUNDARY OF THE PROPERTY OWNED BY WEYERHAEUSER COMPANY. A WILD T-16 THEODOLITE AND 300 FOOT STEEL TAPE WERE USED TO PERFORM THIS SURVEY. A CLOSED RANDOM TRANSIT TRAVERSE WITH A MINIMUM ERROR OF 1/10000' WAS RUN BETWEEN FOUND CORNERS FOR CONTROL. BEARINGS ARE BASED UPON A SOLAR OBSERVATION. OFFSETS TO TRUE PROPERTY LINE WERE CALCULATED AND USED TO DETERMINE THE TRUE PROPERTY LINE. THE PROPERTY LINES WERE MARKED IN THE FIELD BY BLAZING TREES (BLAZES NOTCHED AND PAINTED ORANGE) ON BOTH SIDES OF TRUE LINE. THE CENTER 1/4 CORNER WAS SET AT THE POINT OF INTERSECTION OF THE NORTH-SOUTH AND EAST-WEST CENTERLINES. THE CW 1/16 CORNER WAS SET AT MIDPOINT BETWEEN THE WEST 1/4 CORNER AND THE ESTABLISHED CENTER 1/4 CORNER; ALL IN ACCORDANCE WITH THE "MANUAL OF INSTRUCTIONS FOR THE SURVEY OF THE PUBLIC LANDS OF THE UNITED STATES" (1973 EDITION). THE CORNERS SET IN THIS SURVEY WERE MONUMENTED WITH 1/2" IRON ROD WITH A YELLOW PLASTIC CAP MARKED "WEYER CO.".

N 1/4 COR. SEC. 26

FD: 3/4" IRON PIPE AS SET BY
H.R. JONES 1958 SURVEY FOR
WOODARD LUMBER CO.
14" FIR N73E 25.2 FEET
14" FIR S86 1/4 W 17.0 FEET

SCALE 1" = 400'

- ⊙ MONUMENT FOUND AND USED FOR CONTROL
- ⊙ CORNER SET THIS SURVEY
- ≡≡≡ PROPERTY LINE BLAZED WITH SINGLE NOTCH AND ORANGE PAINT
- ALL BEARINGS TO BEARING TREES ARE MAGNETIC VAR. 20° E
- ⊗ DISTANCES MEASURED TO HEAD OF "W" NAIL

C 1/4 COR. SEC. 26

SET: 1/2" X 24" IRON ROD WITH PLASTIC
CAP MARKED WEYER CO. IN MOUND
OF STONES.
37" INCENSE CEDAR S72E 299 FEET ⊙
27" FIR S28 1/2 W 39.4 FEET ⊙

REGISTERED
PROFESSIONAL
LAND SURVEYOR

Frank O. Williams
June 15, 1983

OREGON
JULY 12, 1968
FRANK O. WILLIAMS
0875

Box 275
SPRINGFIELD, OR 97477

W 1/4 COR. SEC. 26

FD: 36" "T" IRON WITH BRASS
CAP AS RENEWED BY WILFORD
HAINES, FEBRUARY 1957.
16" FIR N21E, 37 LINKS (ORIG. 1901 B.T.)
40" FIR N9W, 56 LINKS (ORIG. 1901 B.T.)

CW 1/16 COR. SEC. 26

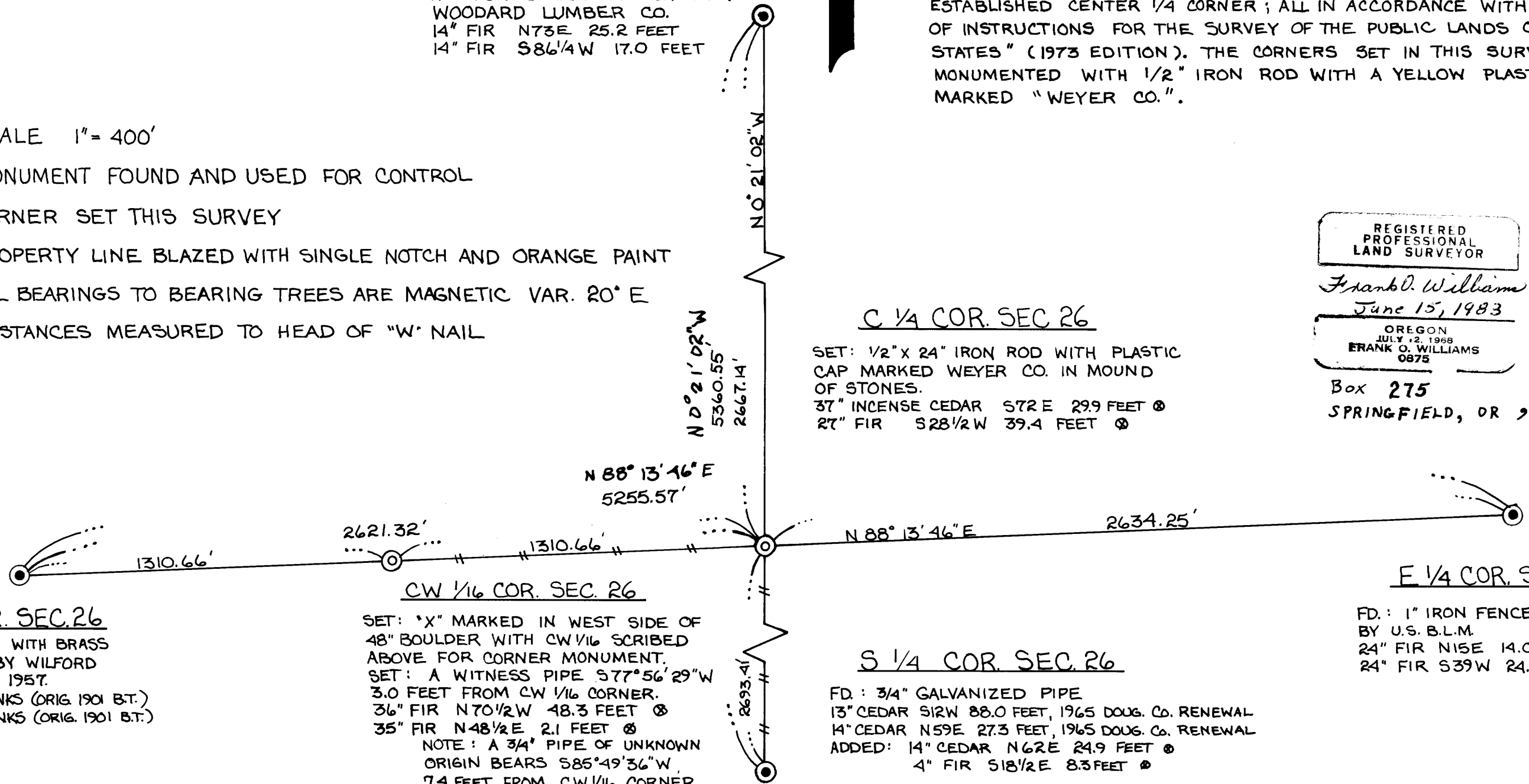
SET: "X" MARKED IN WEST SIDE OF
48" BOULDER WITH CW 1/16 SCRIBED
ABOVE FOR CORNER MONUMENT.
SET: A WITNESS PIPE S77°56'29"W
3.0 FEET FROM CW 1/16 CORNER.
36" FIR N70 1/2 W 48.3 FEET ⊙
35" FIR N48 1/2 E 2.1 FEET ⊙
NOTE: A 3/4" PIPE OF UNKNOWN
ORIGIN BEARS S85°49'36"W,
7.4 FEET FROM CW 1/16 CORNER.

S 1/4 COR. SEC. 26

FD: 3/4" GALVANIZED PIPE
13" CEDAR S12W 88.0 FEET, 1965 DOUG. CO. RENEWAL
14" CEDAR N59E 27.3 FEET, 1965 DOUG. CO. RENEWAL
ADDED: 14" CEDAR N62E 24.9 FEET ⊙
4" FIR S18 1/2 E 8.3 FEET ⊙

E 1/4 COR. SEC. 26

FD: 1" IRON FENCE POST AS SET
BY U.S. B.L.M.
24" FIR N15E 14.0 FEET
24" FIR S39W 24.3 FEET



M 94-36

M 94-36