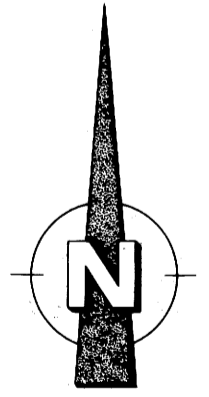
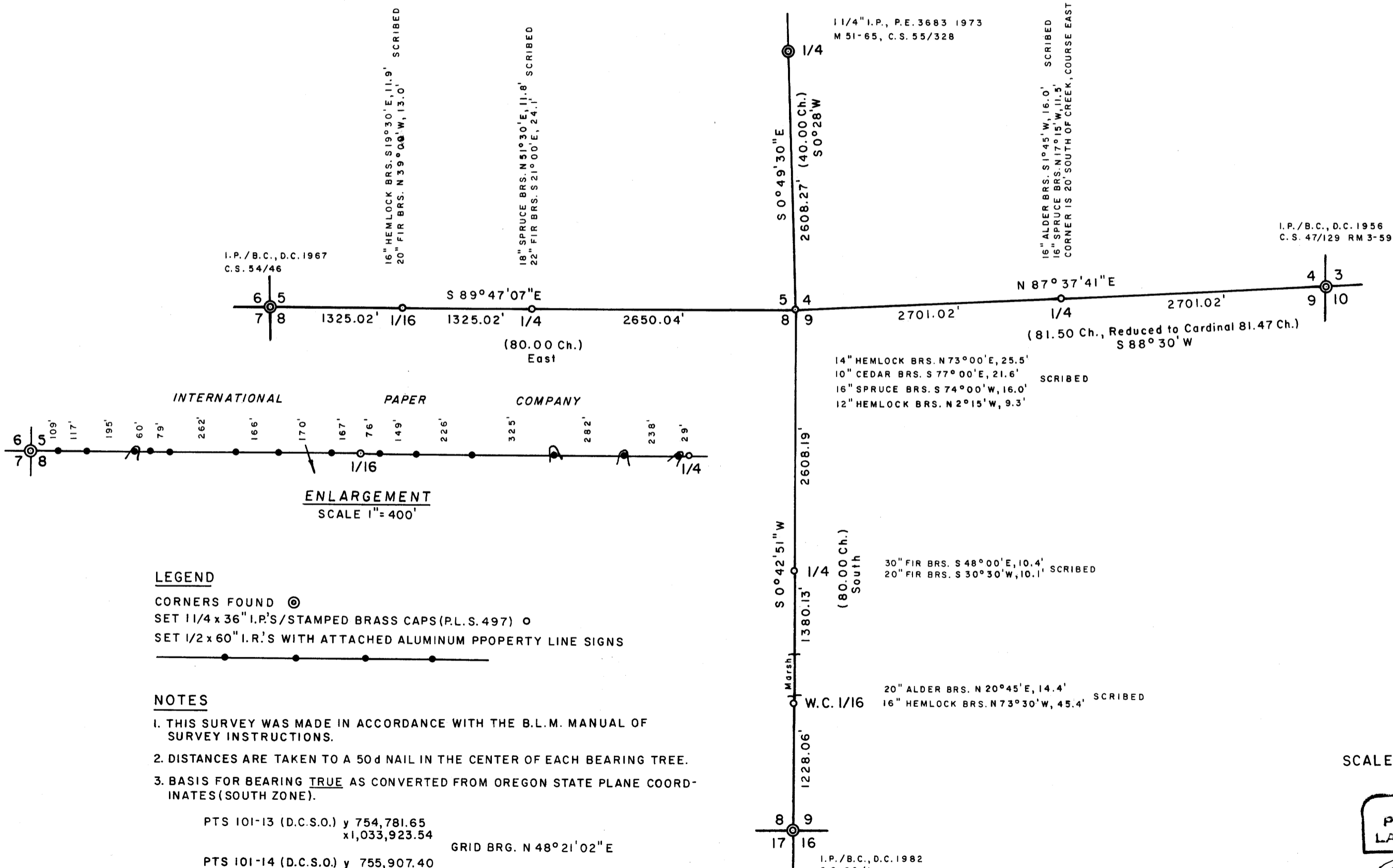


DO NOT REMOVE FROM OFFICE

# RESTORATION OF LOST CORNERS SECTIONS 4, 5, 8 & 9 T22S, R12W FOR DOUGLAS COUNTY LAND DEPARTMENT

BS  
BS  
BS

M 94-34  
58/140



SCALE 1" = 1000' MAY 1983

REGISTERED  
PROFESSIONAL  
LAND SURVEYOR

*Richard J. Hintz*

OREGON  
MAY 18, 1980  
RICHARD J. HINTZ  
497

RICHARD J. HINTZ  
1890 N. 14th ST.  
COOS BAY, OREGON

M 94-34  
58/140

CS FILE FOLDER

CONTAINS

MORE

INFORMATION