

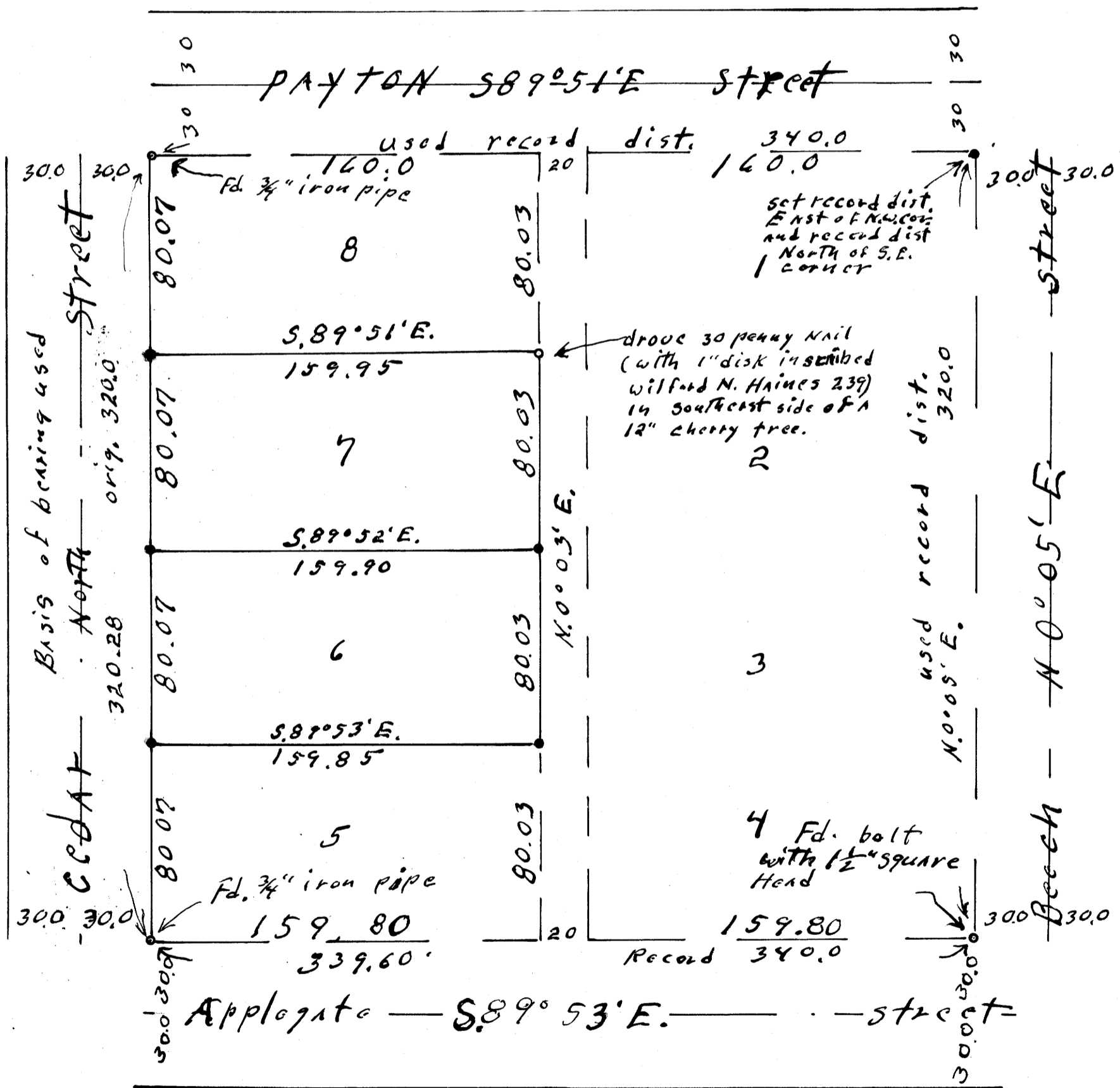
FILED BS
RECEIVED BS
6/13/83 JUNE
83 MAY 1 1983

COUNTY SURVEYOR
DOUGLAS COUNTY, ORE.

lots 6 + 7 BLOCK 11 PLAT OF SOUTH DRAIN
SW 1/4 NE 1/4 Sect. 17, T22S, R5W, Will. MER
1" = 50'
April 1983

For
Art Kopp
Rt. 1 Youcnia 97499
849-2602

By Wilford N. Haines
Rt 38 Box 2
Drain Orcy 97435
836-2303



North
Based on the bearing
of the orig. plat of
South Drain.

1" = 50'

• set 5/8" x 40"
Rebars, with 1"
disk inscribed
Wilford N. Haines
239
This survey

Narrative
This survey accomplished by locating or setting
the corners as shown on this drawing by
use of transit and chain.

REGISTERED
OREGON
LAND SURVEYOR
Wilford N. Haines
MAY 7, 1948
WILFORD N. HAINES
239