

WEST 1/4 CORNER SECTION 19

FD. 1960 DOUGLAS COUNTY BRASS CAP
 24" FIR STUMP, N70°W, 18.0' (SCRIBE VIS.), 1857 B.T.
 36" FIR, N3°E, 23.7' (SCAR VIS.), 1857 B.T.
 16" FIR, S80°W, 52.5' (SCAR VIS.), 1960 C.S.B.T.

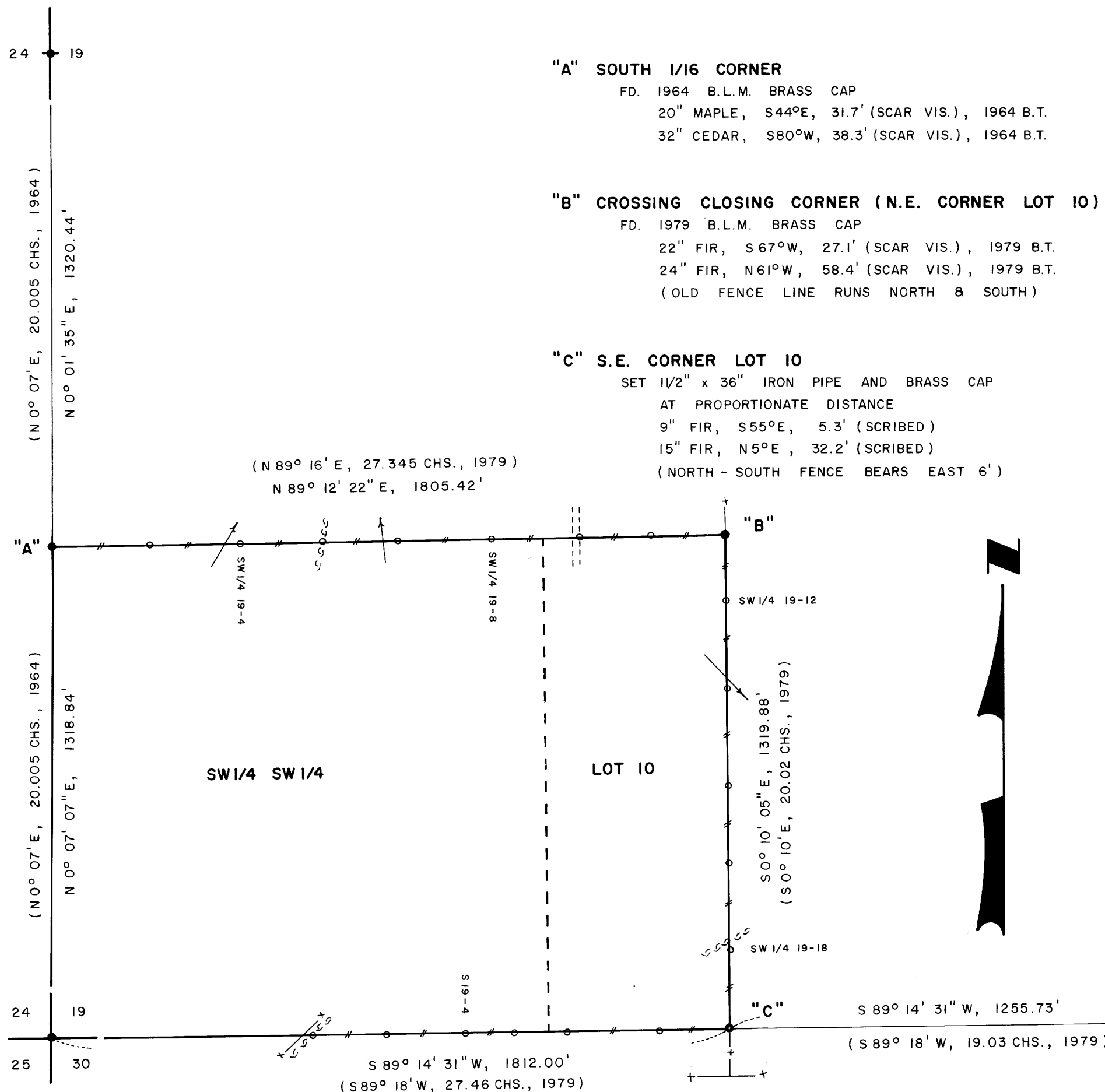
DOUGLAS COUNTY, OREGON
 DO NOT REMOVE FROM OFFICE

FILED *BS*
 RECEIVED *JS*
 MAY 16 1983
 COUNTY SURVEYOR
 DOUGLAS COUNTY, OREGON
BS

LOCATION OF 1/2" IRON RODS

S 1/16 COR.		
SW1/4 19-2	262'	EAST
SW1/4 19-4	506'	EAST
SW1/4 19-5	724'	EAST
SW1/4 19-6	926'	EAST
SW1/4 19-8	1180'	EAST
SW1/4 19-9	1417'	EAST
SW1/4 19-10	1604'	EAST
N.E. COR.	1805'	EAST
SW1/4 19-12	180'	SOUTH
SW1/4 19-14	417'	SOUTH
SW1/4 19-16	675'	SOUTH
SW1/4 19-17	882'	SOUTH
SW1/4 19-18	1112'	SOUTH
S.E. COR.	1320'	SOUTH
S19-1	188'	WEST
S19-2	432'	WEST
S19-3	578'	WEST
S19-4	706'	WEST
S19-6	914'	WEST
S19-9	1112'	WEST
S.W. COR.	1812'	WEST

SURVEY IN
SW 1/4 OF SECTION 19, T23S, R7W, W.M.
DOUGLAS COUNTY, OREGON
FOR
INTERNATIONAL PAPER COMPANY
BY
ROBERTS SURVEYING INC.
29 WEST 29TH STREET
EUGENE, OREGON 97405
APRIL 12, 1983



S.W. CORNER SECTION 19

FD. 1964 B.L.M. BRASS CAP
 27" FIR, N6°E, 265.4' (SCAR VIS.), 1964 B.T.
 42" FIR, N39°W, 374.2' (SCAR VIS.), 1964 B.T.

LEGEND

- CORNERS FOUND AND USED FOR CONTROL
- CORNERS SET, 1/2" x 36" IRON PIPES WITH BRASS CAPS. CAPS STAMPED S-T-R, DATE AND P.L.S. NO. 1039.
- LINES MARKED WITH RED PAINTED BLAZES, 1/2" x 60" IRON RODS AND RED RIBBON. A YELLOW PROPERTY LINE SIGN, WITH P.L.S. NO. 1039 STAMPED UPON, IS ATTACHED TO EACH ROD.
- () DATA OF RECORD, 1964, AND 1979 B.L.M. SURVEYS.
- BASIS OF BEARING, SOLAR OBSERVATION.
- DISTANCE TO BEARING TREES ARE CENTER MEASURE.
- ALL NEW BEARING TREES ARE SCRIBED.
- SCALE 1" = 300'

NARRATIVE

I, LES ROBERTS, REGISTERED PROFESSIONAL LAND SURVEYOR DO CERTIFY THAT I HAVE CORRECTLY SURVEYED THE S.W. 1/4 OF SECTION 19 IN ACCORDANCE TO THE 1973 MANUAL OF INSTRUCTIONS FOR THE SURVEY OF THE PUBLIC LANDS OF THE UNITED STATES. THE S.E. CORNER OF LOT 10 WAS SET ON LINE BETWEEN THE S.W. SECTION CORNER AND THE WITNESS CORNER TO THE SOUTH 1/4 CORNER OF SECTION 19. SAID S.E. CORNER WAS SET AT PROPORTIONATE DISTANCE BASED UPON HARVEY WOFFORD'S 1979 SURVEY PLAT. NO EVIDENCE COULD BE FOUND OF THE 5/8" IRON PIPE USED BY WOFFORD TO ESTABLISH THE WEST BOUNDARY OF D.L.C. NO. 45. AN OLD N-E-W FENCE CORNER BEARS S2°W, 122.8' FROM THE S.E. CORNER OF LOT 10. A CLOSED MEANDER TRANSIT AND E.D.M. TRAVERSE WAS RUN BETWEEN ALL FOUND CORNERS AND USED FOR CONTROL. A CLOSED MEANDER TRANSIT AND CHAIN TRAVERSE WAS RUN ALONG ALL BLAZED AND POSTED PROPERTY LINES AS SHOWN. OFFSETS WERE COMPUTED FROM THIS MEANDER TRAVERSE TO THE TRUE PROPERTY LINE.

LES ROBERTS
 REGISTERED PROFESSIONAL LAND SURVEYOR
 OREGON
 L. ROBERTS
 1983

MAP FILE M. 27-12

MAP FILE M. 27-12