

COUNTY SURVEYORS FILE DATA
DO NOT REMOVE FROM OFFICE

FILED
RECEIVED

APR 28 1983

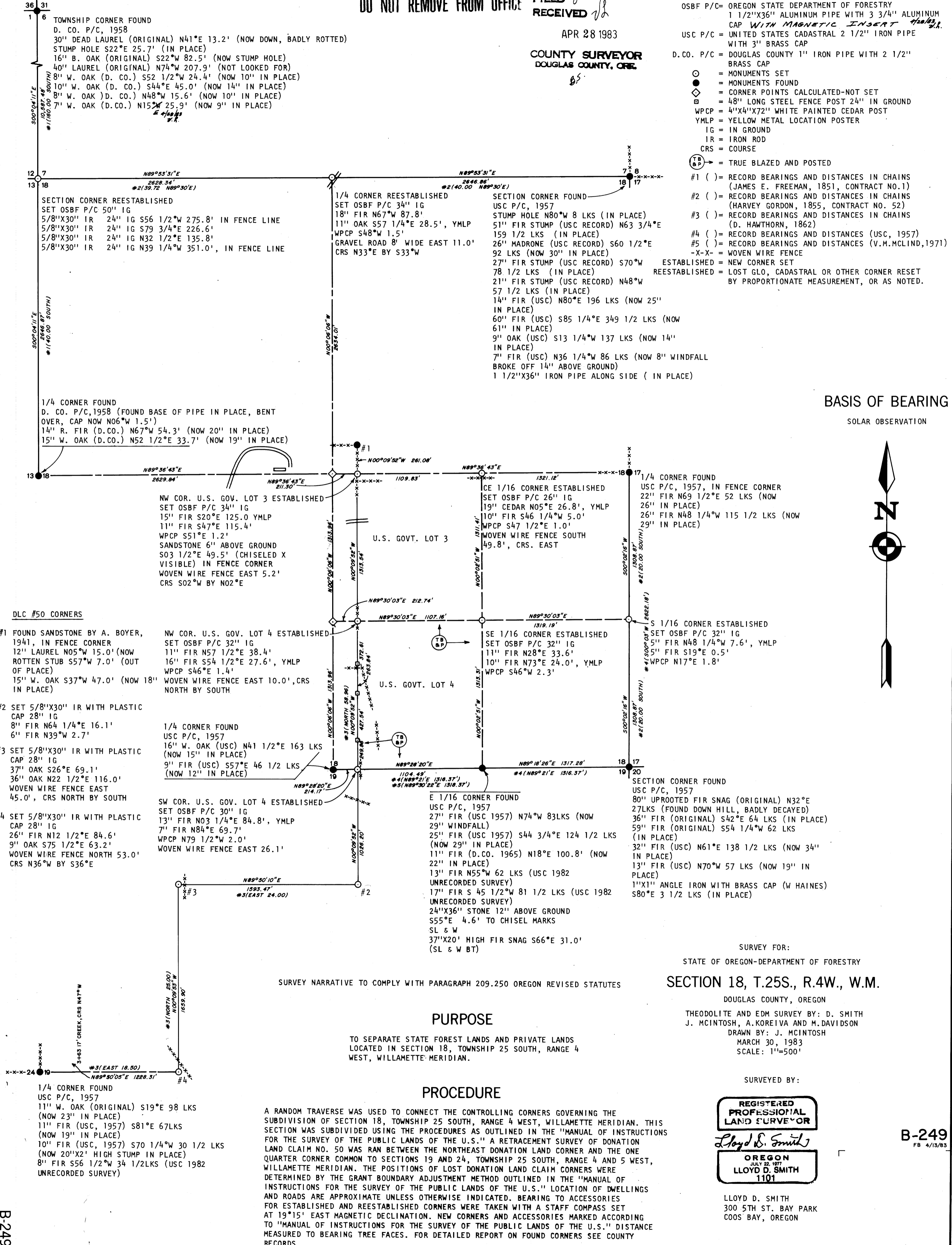
COUNTY SURVEYOR
DOUGLAS COUNTY, ORE.

LEGEND

- OSBF P/C= OREGON STATE DEPARTMENT OF FORESTRY
1 1/2"X36" ALUMINUM PIPE WITH 3 3/4" ALUMINUM
CAP WITH MAGNETIC INSERT
- USC P/C = UNITED STATES CADASTRAL 2 1/2" IRON PIPE
WITH 3" BRASS CAP
- D. CO. P/C = DOUGLAS COUNTY 1" IRON PIPE WITH 2 1/2"
BRASS CAP
- = MONUMENTS SET
- = MONUMENTS FOUND
- ◇ = CORNER POINTS CALCULATED-NOT SET
- = 48" LONG STEEL FENCE POST 24" IN GROUND
- WPCP = 4"X4"X72" WHITE PAINTED CEDAR POST
- YMLP = YELLOW METAL LOCATION POSTER
- IG = IN GROUND
- IR = IRON ROD
- CRS = COURSE
- ⊙ = TRUE BLAZED AND POSTED
- #1 () = RECORD BEARINGS AND DISTANCES IN CHAINS
(JAMES E. FREEMAN, 1851, CONTRACT NO.1)
- #2 () = RECORD BEARINGS AND DISTANCES IN CHAINS
(HARVEY GORDON, 1855, CONTRACT NO. 52)
- #3 () = RECORD BEARINGS AND DISTANCES IN CHAINS
(D. HAWTHORN, 1862)
- #4 () = RECORD BEARINGS AND DISTANCES (USC, 1957)
- #5 () = RECORD BEARINGS AND DISTANCES (V.M.MCLIND, 1971)
- X-X- = WOVEN WIRE FENCE
- ESTABLISHED = NEW CORNER SET
- REESTABLISHED = LOST GLO, CADASTRAL OR OTHER CORNER RESET
BY PROPORTIONATE MEASUREMENT, OR AS NOTED.

BASIS OF BEARING

SOLAR OBSERVATION



DLC #50 CORNERS

- #1 FOUND SANDSTONE BY A. BOYER, 1941, IN FENCE CORNER
12" LAUREL N05°W 15.0' (NOW ROTTEN STUB S57°W 7.0' (OUT OF PLACE)
15" W. OAK S37°W 47.0' (NOW 18" IN PLACE)
- #2 SET 5/8"X30" IR WITH PLASTIC CAP 28" IG
8" FIR N64 1/4°E 16.1'
6" FIR N39°W 2.7'
- #3 SET 5/8"X30" IR WITH PLASTIC CAP 28" IG
37" OAK S26°E 69.1'
36" OAK N22 1/2°E 116.0'
WOVEN WIRE FENCE EAST 45.0', CRS NORTH BY SOUTH
- #4 SET 5/8"X30" IR WITH PLASTIC CAP 28" IG
26" FIR N12 1/2°E 84.6'
9" OAK S75 1/2°E 63.2'
WOVEN WIRE FENCE NORTH 53.0' CRS N36°W BY S36°E

SURVEY NARRATIVE TO COMPLY WITH PARAGRAPH 209.250 OREGON REVISED STATUTES

PURPOSE

TO SEPARATE STATE FOREST LANDS AND PRIVATE LANDS LOCATED IN SECTION 18, TOWNSHIP 25 SOUTH, RANGE 4 WEST, WILLAMETTE MERIDIAN.

PROCEDURE

A RANDOM TRAVERSE WAS USED TO CONNECT THE CONTROLLING CORNERS GOVERNING THE SUBDIVISION OF SECTION 18, TOWNSHIP 25 SOUTH, RANGE 4 WEST, WILLAMETTE MERIDIAN. THIS SECTION WAS SUBDIVIDED USING THE PROCEDURES AS OUTLINED IN THE "MANUAL OF INSTRUCTIONS FOR THE SURVEY OF THE PUBLIC LANDS OF THE U.S." A RETRACEMENT SURVEY OF DONATION LAND CLAIM NO. 50 WAS RUN BETWEEN THE NORTHEAST DONATION LAND CORNER AND THE ONE QUARTER CORNER COMMON TO SECTIONS 19 AND 24, TOWNSHIP 25 SOUTH, RANGE 4 AND 5 WEST, WILLAMETTE MERIDIAN. THE POSITIONS OF LOST DONATION LAND CLAIM CORNERS WERE DETERMINED BY THE GRANT BOUNDARY ADJUSTMENT METHOD OUTLINED IN THE "MANUAL OF INSTRUCTIONS FOR THE SURVEY OF THE PUBLIC LANDS OF THE U.S." LOCATION OF DWELLINGS AND ROADS ARE APPROXIMATE UNLESS OTHERWISE INDICATED. BEARING TO ACCESSORIES FOR ESTABLISHED AND REESTABLISHED CORNERS WERE TAKEN WITH A STAFF COMPASS SET AT 19°15' EAST MAGNETIC DECLINATION. NEW CORNERS AND ACCESSORIES MARKED ACCORDING TO "MANUAL OF INSTRUCTIONS FOR THE SURVEY OF THE PUBLIC LANDS OF THE U.S." DISTANCE MEASURED TO BEARING TREE FACES. FOR DETAILED REPORT ON FOUND CORNERS SEE COUNTY RECORDS.

SURVEY FOR:
STATE OF OREGON-DEPARTMENT OF FORESTRY
SECTION 18, T.25S., R.4W., W.M.
DOUGLAS COUNTY, OREGON
THEODOLITE AND EDM SURVEY BY: D. SMITH
J. MCINTOSH, A. KOREIVA AND M. DAVIDSON
DRAWN BY: J. MCINTOSH
MARCH 30, 1983
SCALE: 1"=500'

SURVEYED BY:

REGISTERED PROFESSIONAL LAND SURVEYOR

Lloyd D. Smith

OREGON
JULY 22 1977
LLOYD D. SMITH
1101

LLOYD D. SMITH
300 5TH ST. BAY PARK
COOS BAY, OREGON

B-249
FB 4/13/83