

① 1/4 CORNER S31/S6

Found a 2-1/2" brass cap on a 1-1/2" iron pipe set in 1960 by Douglas County, and the following accessories:
 14" fir bears N70°E, 9.0' Closed face (1960)
 7" fir bears S34°E, 9.5' Closed face (1960)
 25" B. Oak bears N10°W, 12.0' Center partially rotted- no scribing (original) (record distance- 12.5')

② WITNESS CORNER E1/16 S31/S6

Set ACIP and the following accessories:
 31" fir (triple stem) bears S73°E, 17.3' Scribed: E1/16 WC S6 BT (1983)
 22" fir bears S64°W, 7.1' Scribed: E1/16 WC S6 BT (1983)

③ MEANDER CORNER S31/S6

Set ACIP on west bank of Umpqua River near high water line, and the following accessories:
 4" fir bears N60°W, 9.1' Scribed: X BT (1983)
 24" fir bears N6°E, 104.0' Scribed: MC S31 BT (1983)
 No BT's available south of line

④ WITNESS CORNER SECTION CORNER S31/S32/S5/S6

Found a 2-1/2" brass cap on a 1-1/2" iron pipe on the east bank Umpqua River, set in 1970 by P.L.S. 896, and the following accessories:
 17" cedar stump bears N3°E, 5.0' (record=5.3') Scribed: X BT (1970)
 27" cedar stump bears N47°W, 11.5' (record=11.0') (1970)
 Scribed: S32 T24S R7W BT Chopped X in face
 18" oak bears S63°W, 32.9' (record=S60°W, 32.4') (1970)
 Closed face. Chopped X in face
 SET: 18" oak bears N87°W, 33.0' Scribed: X BT (1983)
 8" oak bears N8°W, 18.8' Scribed: X BT (1983)
 11" willow bears S39°E, 28.2' Scribed: X BT (1983)

⑤ WITNESS CORNER 1/4 CORNER S1/S6

Found a 3-1/2" brass cap on a 2-1/2" iron pipe on the east bank of Little Wolf Creek, set by B.L.M. in 1964, and the following accessories:
 78" fir (broken top) bears N61°E, 105.2' (record=103.0') (1964)
 No scribing visible.
 35" fir snag bears S47°W, 172.3' (1964)
 No scribing visible.

⑥ CE 1/16 CORNER SECTION 6

Set ACIP and the following accessories:
 24" fir bears N38°E, 20.8' Scribed: CE1/16 S6 BT (1983)
 28" fir bears N84°W, 42.9' Scribed: CE1/16 S6 BT (1983)
 Also found a 7/8" iron pipe that bears S9°E, 5.0' (B.L.M. work corner)

⑦ WITNESS CORNER 1/4 CORNER S6/S5

Set ACIP on the east bank Umpqua River, and the following accessories:
 Chiseled "X B0" on an 8'x12' rock face bears S67°E, 84.0' (1983)
 Chiseled "X B0" on a 5'x2' rock face bears N56°E, 71.8' (1983)

⑧ SPECIAL MEANDER CORNER SECTION 6

Set ACIP on the north bank Umpqua River, and the following accessories:
 7" fir bears N64°W, 17.6' (1983)
 17" fir bears N38°E, 11.9' (1983)
 Both scribed: S6 SMC BT

⑨ WITNESS CORNER SECTION CORNER S1/S6/S7/S12

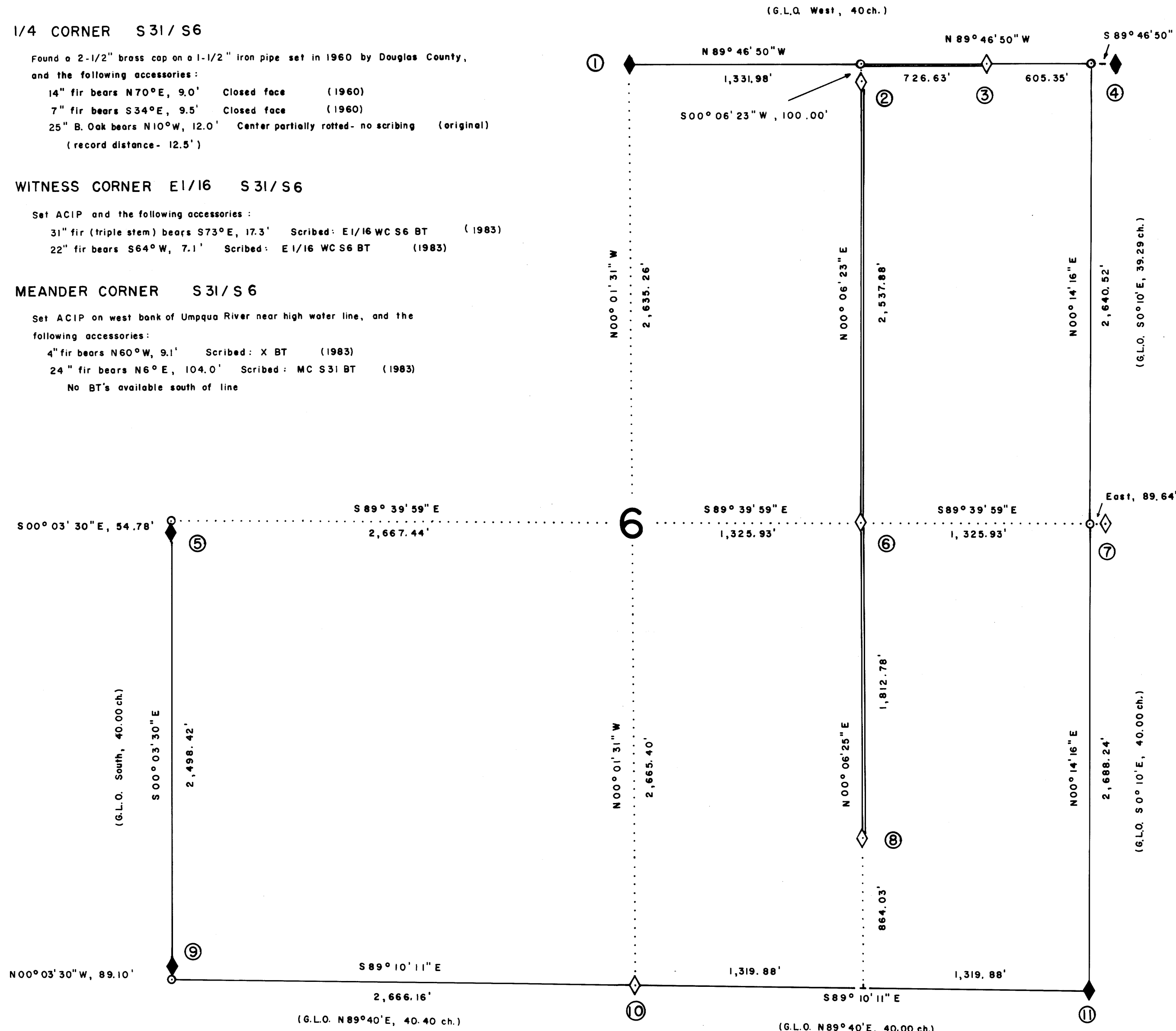
Found 3" B.L.M. brass cap on a 2-1/2" iron pipe set in 1964, on the north bank Umpqua River, and the following accessories:
 14" fir bears N43-1/2°E, 62.0' Closed face (1964)
 Chiseled "X B0" on an 8'x4'x4' boulder bears S27°E, 19.8' (1964)
 Chiseled "X B0" on a 3'x2'x2' boulder bears N47°W, 8.6' (1964)
 SET: Chiseled "X" on a 4'x3'x2' boulder bears S15-1/2°W, 18.7' (1983)

⑩ 1/4 CORNER S6/S7

Set a "PK" nail in north lane of paved road, and the following accessories:
 11" myrtle bears N54°E, 68.56' Scribed: 1/4 S6 BT (1983) [Nailed an aluminum washer (stamped PLS 1988) on the lower face of each BT.]
 15" fir bears S56°E, 164.88' Scribed: 1/4 S7 BT (1983)

⑪ SECTION CORNER S6/S5/S8/S7

Found a 2-1/2" Douglas County brass cap on a 1-1/4" iron pipe set in 1961, and the following accessories: (set in 1961)
 21" madrone bears N81°E, 17.3' (record=18.0') No scribing found
 15" fir bears S32-1/2°E, 24.2' Scribed: S8 T25S BT
 15" fir bears S22-1/2°W, 49.7' Closed face
 44" fir bears N48°W, 18.5' (record=19.0') No scribing found



LEGEND

- ◆ corner found and used for control
- ◇ corner set this survey
- true point of corner - not accessible
- property line posted

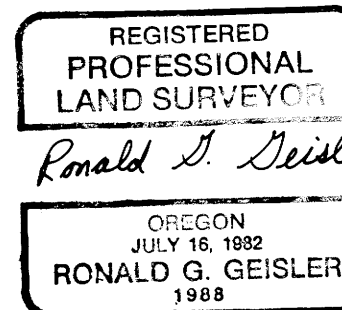
NOTES

- 1) ACIP refers to a 2-1/2" aluminum cap set on a 7/8" x 36" iron pipe.
- 2) All monuments set are stamped according to the descriptions given in the 1973 B.L.M. Manual of Surveying Instructions, Chapter IV. In addition, each monument set, is stamped P.L.S. 1988, unless otherwise indicated.
- 3) All bearings to corner accessories were taken with a hand compass. Mean magnetic variation = 19° 45' E
- 4) Distances to bearing trees are measured to the side and center of the tree, one foot above the root crown.
- 5) This survey was conducted using a Topcon GTS-2, a Jena O20A theodolite, and a Mac IE E.D.M.

SURVEY NARRATIVE

This survey was conducted to establish the property line for Champion International Corporation, in Section 6, T25S, R7W, W.M., Douglas County, Oregon. Basis of bearing was obtained from the bearing between the N1/4 and NE Section Corner of Section 6 (S89°46'50"E), on a plot filed by Larry Bishop, P.L.S. 896, Douglas County Surveyor file 55/140. Section 6 was originally surveyed by Dennis Hathorn in 1857. The West line was rerun by A.R. and S.C. Flint in 1881. Controlling corners found were set by the B.L.M. and the Douglas County Surveyor's Office, with the exception of the Witness Corner to the NE Section Corner, set by Larry Bishop, P.L.S. 896. The S1/4 and E1/4 Corners were set at single proportionate distances between Section Corners, after failing to find any original evidence at either point. Searched for, but failed to find any original evidence of the 1857 meander corners set on the North, South, and East Section lines. Did not reset those meander corners. The section was then subdivided according to the 1973 B.L.M. Manual of Surveying Instructions. A meander corner and a special meander corner were set on Champion's property line near the high mark of the Umpqua River, to define the extent of Champion's ownership, which runs to the river. A witness corner was set at the E1/16 Corner S31/S6, because the true point of corner fell in a road construction site. All traverses run were closed loops with a minimum acceptable error of closure of 1 part in 5000. Property lines were posted with 6" steel fence posts with attached "Champion" tags. Line was also blazed and flagged.

RONALD G. GEISLER
 OREGON P.L.S. 1988
 P.O. Box 1328
 Roseburg, Oregon 97470



SURVEY OF SECTION 6, T25S, R7W, W.M.

DOUGLAS COUNTY, OREGON

BY CHAMPION INTERNATIONAL CORPORATION

COUNTY SURVEYORS FILE DATA DO NOT REMOVE FROM OFFICE

FEBRUARY - MARCH 1983

R.G.G.

FILED RECEIVED APR 28 1983 COUNTY SURVEYOR DOUGLAS COUNTY, ORE.



SCALE: 1" = 500'

MAP FILE M. 253 - 79

MAP FILE M. 253 - 79