

# SURVEY IN SECTION 17, T30S, R9W, W.M.

FILED *BS*  
 RECEIVED *BS*  
 APR 8 1983  
 COUNTY SURVEYOR  
 DOUGLAS COUNTY, ORE.  
*BS*

FOR: SUN STUDS, INC. & ROSEBURG LMBR. CO. SCALE: 1" = 1000'  
 BY: AA SURVEYING SERVICE, INC.  
 P.O. BOX 130  
 ROSEBURG, OR 97470  
 MARCH 1983

**COUNTY SURVEYORS FILE DATA**  
**NOT REMOVE FROM OFFICE**

RECORD OF MONUMENTS (continued):

**NARRATIVE:**

**PURPOSE:** To set the CS 1/16 cor. in Section 17.

**PROCEDURE:** I used the north and south centerline of the Section as the Basis of Bearings. The corners shown hereon were found or set, as noted.

Some of the found corners were monumented under Group No. 1107, Instructions dated March 17, 1982, Bureau of Land Management, and are not recorded at this time. I have accepted these corners.

Equipment used: TopCon GTS-2 #40473.

**RECORD OF MONUMENTS:**

① N 1/4 CORNER SECTION 17

Found a 2 1/2" aluminum post with aluminum cap	T30S R9W
BT' found	S8
	S17
10" fir bears N9°E 3.3 ft. (rec 5 lks) scribed "1/4 S8 BT"	1982
11" cedar bears S66 1/2°E 8.9 ft. (rec 13.5 lks) scribed "1/4 S17 BT"	

② W 1/4 CORNER SECTION 17

Found a 1" iron post with brass cap	COUNTY SURVEYORS OFFICE
BT's found	T30S R9W
	1/4 S18   S17
10" cedar bears S80°E 46.2 ft. (rec 70 lks) partially healed blaze	1965
16" fir bears N32°W 51.5 ft. (rec 78 lks) partially healed blaze	

③ C 1/4 CORNER SECTION 17

Found a 2 1/2" aluminum post with aluminum cap	T30S R9W
BT's found	C 1/4 S17
	1982
9" fir bears S59°W 13.9 ft. (rec 24 lks) scribed "C 1/4 S17 BT"	
8" fir bears N54°W 15.8 ft. (rec 24 lks) scribed "C 1/4 S17 BT"	

④ E 1/4 CORNER SECTION 17

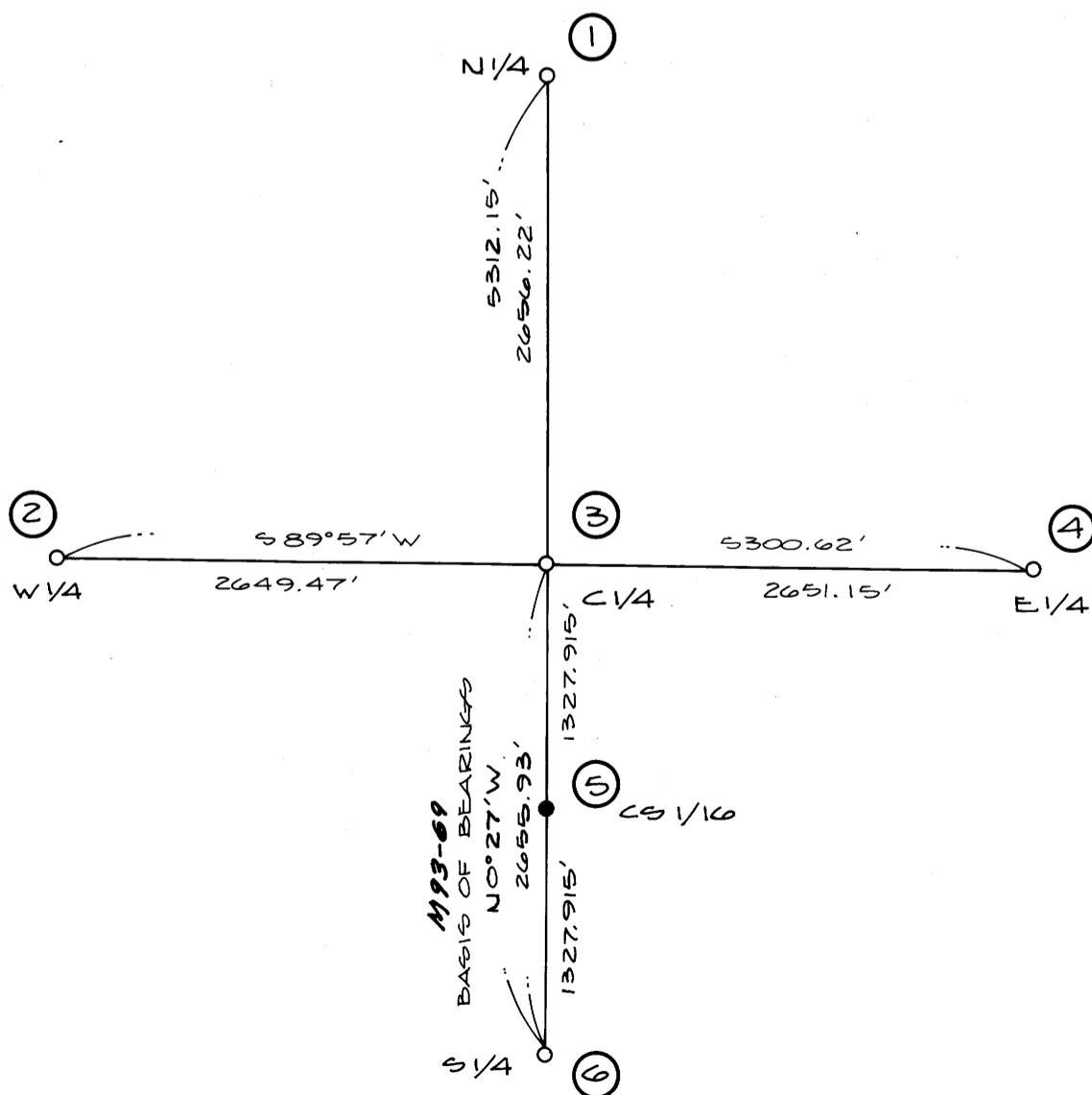
Found 1" iron post with brass cap	G.P.
BT's found	1/4 COR S17   S16
	T30S R9W
	1979
32" fir stump bears N48 1/2°E 28.0 ft. (rec 42 1/2 lks) fragmentary scribe marks visible on open blaze	
36" fir stump bears N63°W 15.8 ft. (rec 24 lks) fragmentary scribe marks visible on open blaze	

⑤ CS 1/16 CORNER SECTION 17

Set 1" X 30" iron pipe with 2 1/2" brass cap	T30S R9W
BT's marked	C
	S1/16   S17
	C
	PLS 1651
	1983
7" D. fir bears N26°W 11.5 ft. scribed "X BT"	
8" D. fir bears N84°E 4.75 ft. scribed "CS 1/16 S17, BT"	

⑥ S 1/4 CORNER SECTION 17

Found 1" iron post with brass cap	COUNTY SURVEYORS OFFICE
BT's found	T30S
	S17
	S20
	R9W
	1964
25" white fir bears N58°E 10.6 ft. (rec 16 lks) healed blaze	



REGISTERED  
 PROFESSIONAL  
 LAND SURVEYOR

*Herman A. Pieske*

OREGON  
 JULY 14, 1978  
 HERMAN A. PIESKE  
 1651

**LEGEND:**

- - FOUND MONUMENT AS NOTED
- - SET 1" X 30" IRON PIPE WITH 2 1/2" BRASS CAP AS NOTED