

INST. NO. 81-5196

COUNTY SURVEYORS FILE DATA
DO NOT REMOVE FROM OFFICE

A MAJOR LAND PARTITION lying in
NW 1/4 of Section 23, T27S, R3W, W.M.

PARTITIONERS & OWNERS:
G. Rocha, Eldon McMullen, Gary Jennings
Cavitt Creek Road
Glide, Oregon 97443

SURVEYOR:
BHW Engineering, Inc.
1205 Southeast Court
Roseburg, Oregon 97470

FILED *BS*
RECEIVED *RUB*

OCT 7 1982

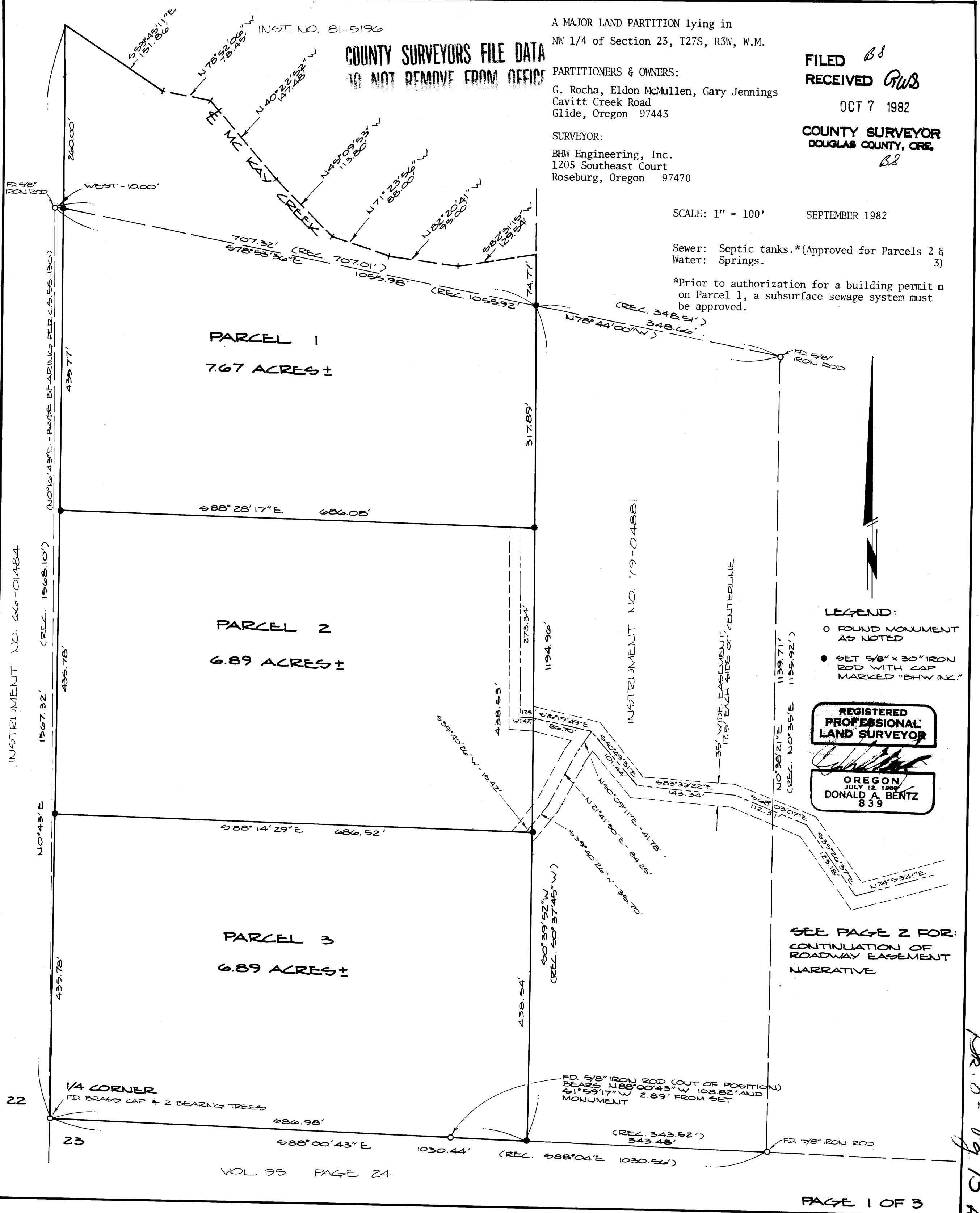
COUNTY SURVEYOR
DOUGLAS COUNTY, ORE.
BS

SCALE: 1" = 100' SEPTEMBER 1982

Sewer: Septic tanks.* (Approved for Parcels 2 & 3)
Water: Springs.

*Prior to authorization for a building permit on Parcel 1, a subsurface sewage system must be approved.

INSTRUMENT NO. 66-01484



- LEGEND:
- FOUND MONUMENT AS NOTED
 - SET 5/8" x 30" IRON ROD WITH CAP MARKED "BHW INK."

REGISTERED PROFESSIONAL LAND SURVEYOR

OREGON
JULY 12, 1989
DONALD A. BENTZ
839

SEE PAGE 2 FOR:
CONTINUATION OF
ROADWAY EASEMENT
NARRATIVE

22
23

1/4 CORNER
FD BRASS CAP & 2 BEARING TREES

FD 5/8" IRON ROD (OUT OF POSITION)
BEARS N88°00'43"W 108.82' AND
S1°59'17"W 2.89' FROM SET
MONUMENT

Pl. 8-15 a