

N.W. CORNER SECTION 14

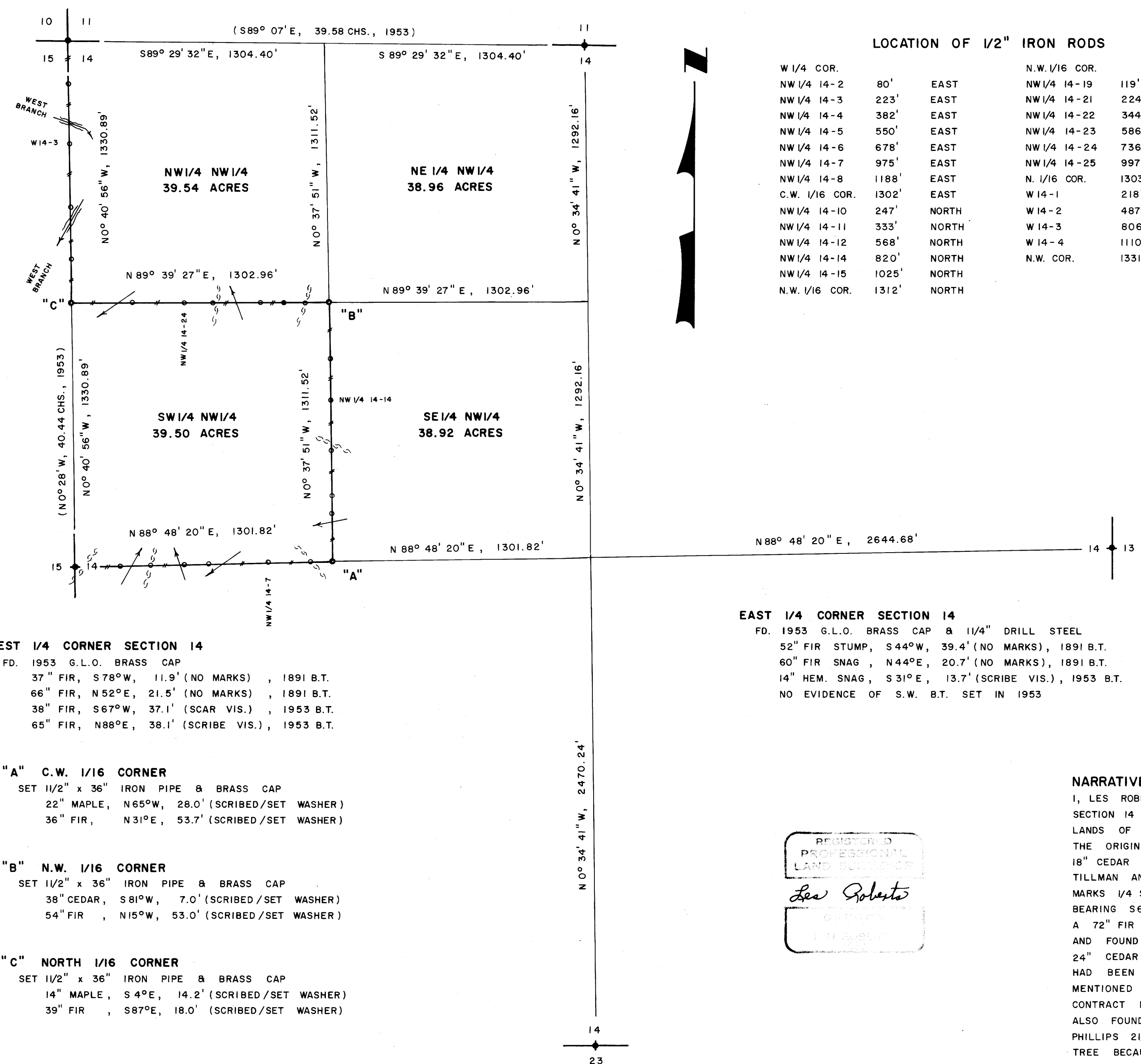
FD. 1921 G.L.O. BRASS CAP
60" FIR, S86°E, 58.9' (NO MARKS), 1891 B.T.
72" FIR, N59°E, 42.7' (SCAR VIS.), 1891 B.T.
28" FIR, S78°W, 8.6' (SCAR VIS.), 1921 B.T.
36" FIR, N77°W, 20.1' (SCAR VIS.), 1921 B.T.
18" FIR, N36°W, 41.7' (SCAR VIS.), 1953 B.T.

NORTH 1/4 CORNER SECTION 14

FD. 1953 G.L.O. BRASS CAP
36" MAPLE, N81°E, 67.9' (NO MARKS), 1891 B.T.
15" ALDER, S77°E, 65.3' (BARK SCRIBED), 1953 B.T.
NO EVIDENCE OF N.W. B.T. SET IN 1953

COUNTY SURVEYORS FILE DATA
DO NOT REMOVE FROM OFFICE

FILED
RECEIVED
MAR 25 1983
COUNTY SURVEYOR
DOUGLAS COUNTY, ORE.



LOCATION OF 1/2" IRON RODS

Table listing corner locations and distances for NW 1/4, N.W. 1/16 COR., and C.W. 1/16 COR. with bearings and distances.

SURVEY OF
SECTION 14, T20S, R9 W, W.M.
DOUGLAS COUNTY, OREGON
FOR
INTERNATIONAL PAPER COMPANY
BY
ROBERTS SURVEYING INC.
29 WEST 29TH STREET
EUGENE, OREGON 97405
FEBRUARY 28, 1983

LEGEND

- CORNERS FOUND AND USED FOR CONTROL
• CORNERS SET, 1 1/2" x 36" IRON PIPES WITH BRASS CAPS STAMPED S-T-R, DATE AND P.L.S. NO. 1039.
--- LINES MARKED WITH RED PAINTED BLAZES, 1/2" x 60" IRON RODS & RED RIBBON. A YELLOW PROPERTY LINE SIGN, WITH P.L.S. NO. 1039 STAMPED UPON, IS ATTACHED TO EACH ROD.
() DATA OF RECORD, 1953 G.L.O. SURVEY
BASIS OF BEARING, SOLAR OBSERVATION
DISTANCE TO BEARING TREES ARE CENTER MEASURE
ALL NEW BEARING TREES ARE SCRIBED AND HAVE A BRASS WASHER STAMPED "P.L.S. 1039" NAILED TO LOWER BLAZE
SCALE 1" = 400'

WEST 1/4 CORNER SECTION 14

FD. 1953 G.L.O. BRASS CAP
37" FIR, S78°W, 11.9' (NO MARKS), 1891 B.T.
66" FIR, N52°E, 21.5' (NO MARKS), 1891 B.T.
38" FIR, S67°W, 37.1' (SCAR VIS.), 1953 B.T.
65" FIR, N88°E, 38.1' (SCRIBE VIS.), 1953 B.T.

EAST 1/4 CORNER SECTION 14

FD. 1953 G.L.O. BRASS CAP & 1 1/4" DRILL STEEL
52" FIR STUMP, S44°W, 39.4' (NO MARKS), 1891 B.T.
60" FIR SNAG, N44°E, 20.7' (NO MARKS), 1891 B.T.
14" HEM. SNAG, S31°E, 13.7' (SCRIBE VIS.), 1953 B.T.
NO EVIDENCE OF S.W. B.T. SET IN 1953

- "A" C.W. 1/16 CORNER
SET 1 1/2" x 36" IRON PIPE & BRASS CAP
22" MAPLE, N65°W, 28.0' (SCRIBED/SET WASHER)
36" FIR, N31°E, 53.7' (SCRIBED/SET WASHER)
"B" N.W. 1/16 CORNER
SET 1 1/2" x 36" IRON PIPE & BRASS CAP
38" CEDAR, S81°W, 7.0' (SCRIBED/SET WASHER)
54" FIR, N15°W, 53.0' (SCRIBED/SET WASHER)
"C" NORTH 1/16 CORNER
SET 1 1/2" x 36" IRON PIPE & BRASS CAP
14" MAPLE, S4°E, 14.2' (SCRIBED/SET WASHER)
39" FIR, S87°E, 18.0' (SCRIBED/SET WASHER)

REGISTERED
PROFESSIONAL
LAND SURVEYOR
Les Roberts

NARRATIVE

I, LES ROBERTS, REGISTERED PROFESSIONAL LAND SURVEYOR DO CERTIFY THAT I HAVE CORRECTLY SURVEYED SECTION 14 IN ACCORDANCE TO THE 1973 MANUAL OF INSTRUCTIONS FOR THE SURVEY OF THE PUBLIC LANDS OF THE UNITED. THE HISTORY OF THE SOUTH 1/4 CORNER IS AS FOLLOWS. 1) WILLIAM THIEL SET THE ORIGINAL CORNER IN 1891. SAID CORNER WAS A 10" CEDAR MARKED 1/4 S ON THE NORTH SIDE. A 18" CEDAR BEARING S65°E, 5.9' AND A 30" FIR BEARING N44°W, 16.5' WERE SET AS B.T.'S. 2) THOMAS TILLMAN AND JOSEPH GAWRON VISITED SAID CORNER IN 1953 AND FOUND A 11" CEDAR WITH SCRIBE MARKS 1/4 S ON NORTH SIDE. THEY ALSO FOUND A 50" FIR BEARING N44°W, 16.5' AND A 24" CEDAR BEARING S65°E, 5.9'. BOTH B.T.'S AGREEING WITH 1891 DATA OF RECORD AS SHOWN ABOVE. TILLMAN SCRIBED A 72" FIR BEARING N74°W, 13.2'. 3) JOHN PHILLIPS VISITED SAID CORNER IN 1960, SEE C.S. FILE NO 51/69, AND FOUND A 72" FIR STUMP (TILLMANS 1953 B.T.), A 50" FIR STUMP (THIEL'S 1891 N.W. B.T.) AND A 24" CEDAR STUMP (THIEL'S 1891 S.E. B.T.). THE 11" CEDAR CORNER TREE FOUND BY TILLMAN IN 1953 HAD BEEN DESTROYED BY RECENT LOGGING AND PHILLIPS SET A 2 1/2" IRON PIPE USING THE FOUND B.T.'S MENTIONED ABOVE. 4) WILLIAM GLENN AND JAMES JELLEY VISITED SAID CORNER IN 1967, SEE NOTES OF CONTRACT NO. 635, AND SAID THEY FOUND THE REMAINS OF THE ORIGINAL CEDAR CORNER TREE. THEY ALSO FOUND TILLMANS 1953 B.T. AS WELL AS THIEL'S N.W. AND S.E. B.T.'S SET IN 1891. THEY MENTION PHILLIPS 2 1/2" PIPE AS BEARING N52°W, 4.62'. I QUESTION GLENN'S FINDING THE ORIGINAL CEDAR CORNER TREE BECAUSE I CANNOT FIND ANY SUCH EVIDENCE TODAY AND MY FIELD MEASUREMENTS INDICATE THAT GLENN ACTUALLY FOUND THIEL'S S.E. CEDAR B.T. AND HAS MISTAKENLY IDENTIFIED IT AS THE REMAINS OF THE ORIGINAL CORNER TREE AS SO STATED IN HIS REPORT. I SET A 1 1/2" x 36" IRON PIPE AND BRASS CAP BESIDE PHILLIPS 2 1/2" IRON PIPE FOR THE SOUTH 1/4 CORNER OF SECTION 14. THE CENTER 1/4 CORNER WAS ESTABLISHED BY INTERSECTING THE N-S AND E-W CENTERLINES OF SECTION 14. THE NORTH 1/16 CORNER BETWEEN SECTIONS 14 & 15 WAS SET HALFWAY BETWEEN THE WEST 1/4 CORNER AND THE N.W. SECTION CORNER. THE C.W. 1/16 CORNER WAS SET HALFWAY BETWEEN THE CENTER 1/4 CORNER AND THE WEST 1/4 CORNER. THE N.W. 1/16 CORNER WAS SET AT THE INTERSECTION OF THE N-S AND E-W CENTERLINES OF SAID N.W. 1/4. A CLOSED MEANDER TRANSIT AND E.D.M. TRAVERSE WAS RUN BETWEEN ALL FOUND CORNERS AND USED FOR CONTROL. A CLOSED MEANDER TRANSIT AND CHAIN TRAVERSE WAS RUN ALONG ALL BLAZED AND POSTED PROPERTY LINES AS SHOWN. OFFSETS WERE COMPUTED FROM THIS MEANDER TRAVERSE TO THE TRUE PROPERTY LINE.

SOUTH 1/4 CORNER SECTION 14

FD. 2 1/2" IRON PIPE SET IN 1960. SEE FILE NO. 51/69.
24" CEDAR STUMP, S65°E, 5.9' (NO MARKS), 1891 B.T.
34" FIR STUMP, N44°W, 16.5' (NO MARKS), 1891 B.T.
60" FIR STUMP, N74°W, 13.2' (SCRIBE VIS.), 1953 B.T.
38" FIR STUMP, S49°E, 22.7' (SCRIBE VIS.), 1967 B.T.
SET 1 1/2" x 36" IRON PIPE & BRASS CAP BESIDE 2 1/2" PIPE
12" FIR, S14°E, 6.4' (SCRIBED/SET WASHER)

MAP FILE M 83-64