

FILED BS  
RECEIVED  
FEB 23 1983

COUNTY SURVEYOR  
DOUGLAS COUNTY, ORE.  
BS

# SURVEY OF BLOCK 9

Plat of you call A  
SW 1/4 section 3, T23S, R5W W.M.  
for  
Col. Rex Applegate

by  
Wilford N. Haines  
Drain, Oregon.  
RT. 38 Box 2  
97435



Legend  
--- Set 3/8" x 40" rebar with cap  
incribed survey point Wilford  
N. Haines Drain Oregon # 239  
attached to top,  
⊙ - Monuments found in place

### NARRATIVE

Control for Third st. is the  
3/4 rods set & recorded on M14-66  
Control for D. st. is the 2"  
metal cap at the intersection  
of Second & D. streets and the  
3/4 rod at South End of D. St.  
and beginning of old County Rd.  
used the center of the trucked  
part of C st. for control,  
made Applegate Avenue  
parallel with Third st.

⊙ ← Fd. 2" Metal Cap  
intersection Second  
and D. streets.  
M 89-75

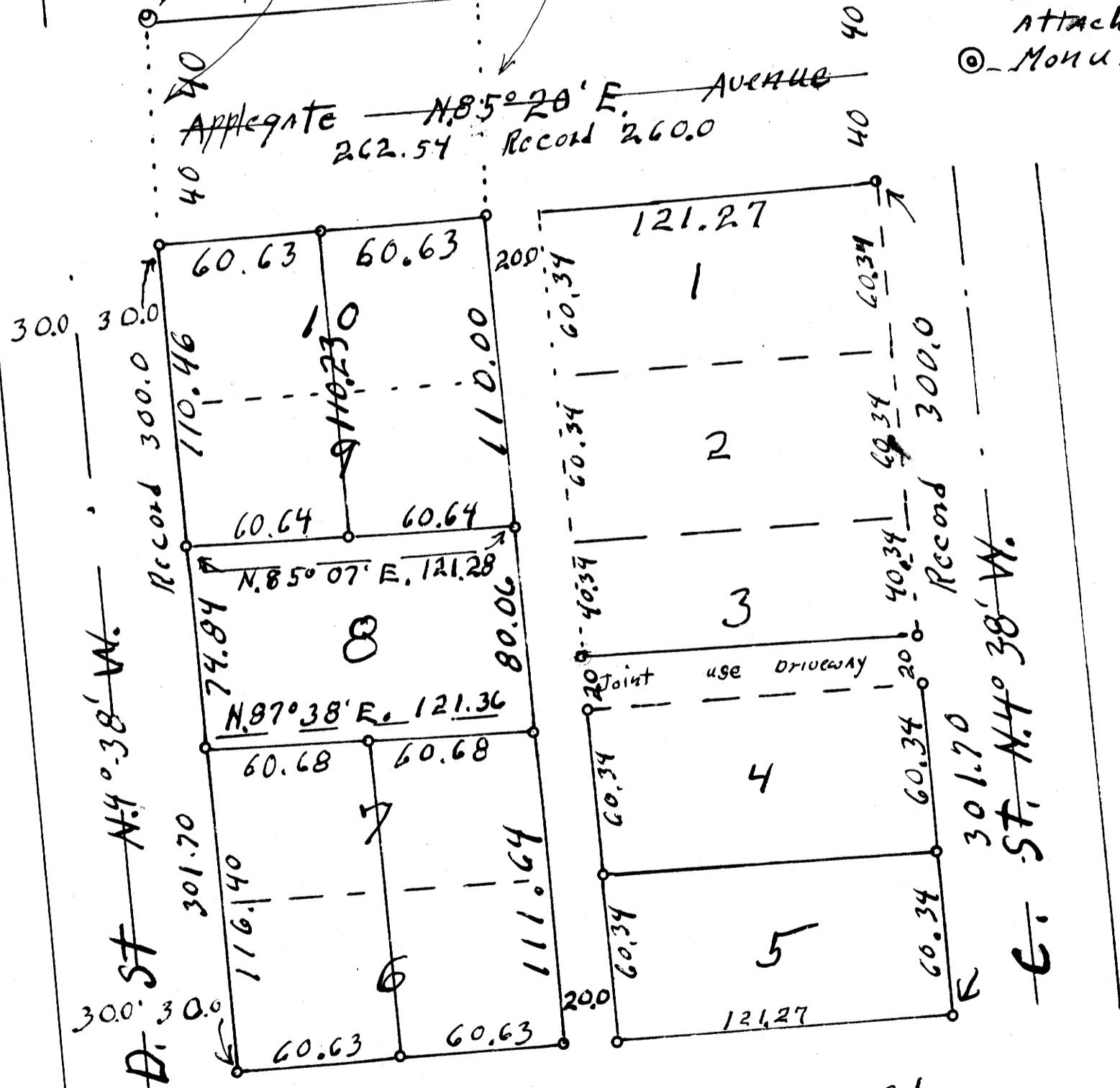
Record 740.00

743.40

North  
Based on S85°20'W  
261.3 ft.  
M14-66

Fd. 1" steel shaft  
No Record  
N. 3° 26' W. 81.70'

Fd. 1/2 rebar  
No Record  
N. 4° 26' W. 82.07'



Scale:  
1" = 50'  
Jan. 1983

Third - S85°20' W. 262.54' ST.  
Record 260.0  
261.3  
S. 85° 20' W.  
M14-66  
Fd. 3/4" Steel Rod  
M 14-66  
Pd. 3/4" Steel Rod  
M14-66